

# 49 Front Street East

## RETAIL SPACE FOR LEASE

ST. LAWRENCE MARKET, TORONTO



### GET MORE INFORMATION:

**ALI BAKER\***

Principal  
647 252 4151  
ali.baker@avisonyoung.com

**CALVIN HOLLAND\***

Senior Associate  
416 673 4020  
calvin.holland@avisonyoung.com

**CAITLYN MICUDA\***

Associate  
416 673 4055  
caitlyn.micuda@avisonyoung.com

**ALLIED**

**AVISON  
YOUNG**

# 49 Front Street East

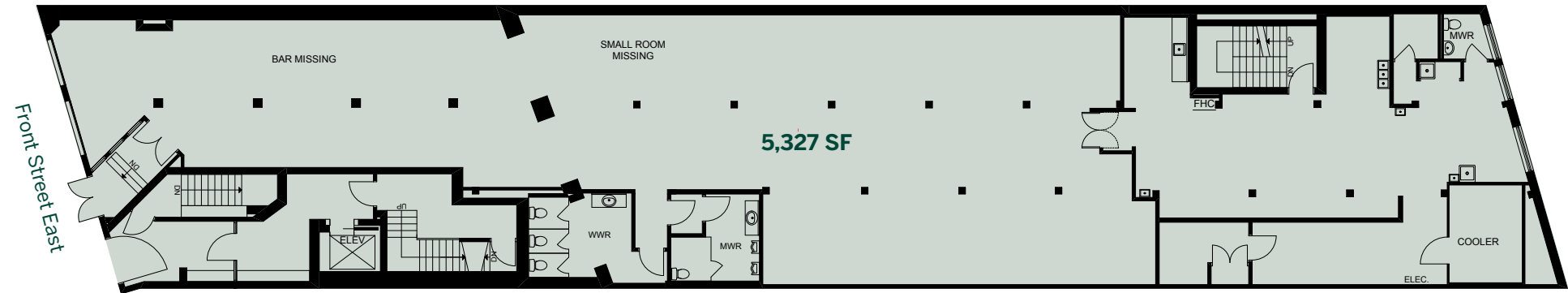
## Availability: Suite 100

Unit Size	5,327 SF
Available	Immediately
Net Rent	Contact Listing Agents
Estimated TMI (2026)	\$29.02 PSF

## Property Highlights

- Prime retail opportunity in the heart of Toronto's historic St. Lawrence neighbourhood
- Highly visible location along Front Street East with strong pedestrian and commuter traffic
- Steps from St. Lawrence Market and surrounded by a dense mix of residential, office, hospitality, and retail uses
- Excellent access to transit and Toronto's downtown core
- Ideal for retail, service, medical, wellness, and food-related uses
- Opportunity to combine Suite 100 and B1 together

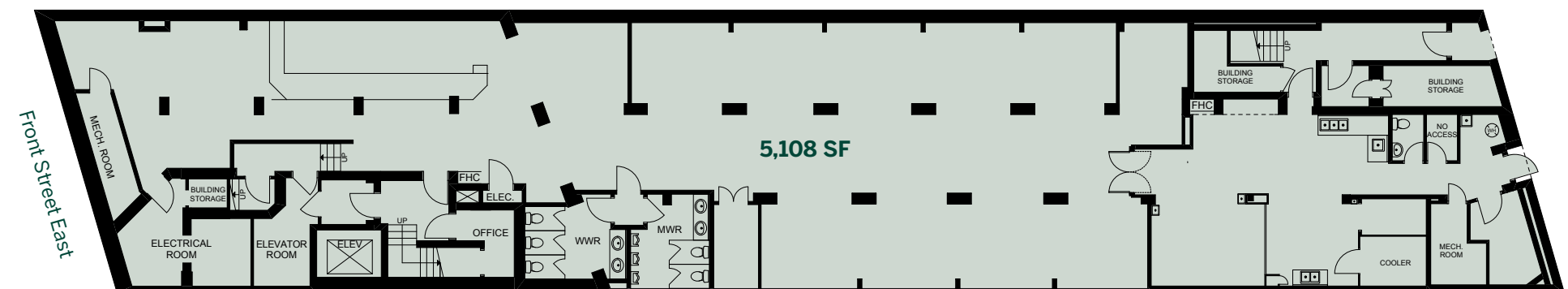
### Suite 100



## Availability: Suite B1

Unit Size	5,108 SF
Available	January 2027
Net Rent	Contact Listing Agents
Estimated TMI (2026)	\$29.02 PSF

### Suite B1





# St. Lawrence Market

49 Front Street East is ideally situated in the heart of Toronto's historic St. Lawrence Market district, one of the city's most established and pedestrian-oriented urban neighborhoods. Positioned along a prominent stretch of Front Street East, the property benefits from exceptional visibility and steady foot traffic generated by a vibrant mix of boutique retailers, acclaimed restaurants, cafés, office users, and cultural landmarks surrounding the area.

Anchored by the renowned St. Lawrence Market and within close proximity to Toronto's Financial District, Union Station, and the Downtown East residential community, the area draws a diverse and consistent customer base of local residents, office workers, and tourists year-round. The neighborhood continues to experience significant residential and commercial growth through ongoing intensification and redevelopment initiatives, further strengthening the vitality and long-term appeal of the corridor.



## 2025 Demographics

1 Km Radius



Total Population

\*Source: Stats Canada, Esri



Daytime Population



Average Household Income



Walk Score

\*Source: walkscore.com

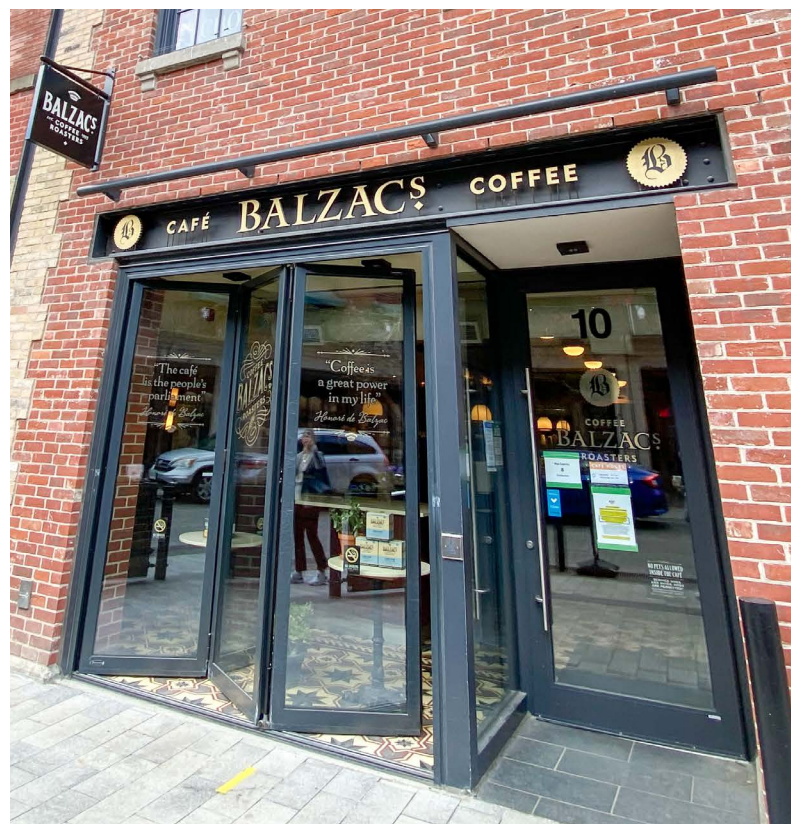


Transit Score



Bike Score

# Neighbouring Tenants in the Area



# 49 Front Street East

---

## GET MORE INFORMATION:

### **ALI BAKER\***

Principal  
647 252 4151  
[ali.baker@avisonyoung.com](mailto:ali.baker@avisonyoung.com)

### **CALVIN HOLLAND\***

Senior Associate  
416 673 4020  
[calvin.holland@avisonyoung.com](mailto:calvin.holland@avisonyoung.com)

### **CAITLYN MICUDA\***

Associate  
416 673 4055  
[caitlyn.micuda@avisonyoung.com](mailto:caitlyn.micuda@avisonyoung.com)

\*Sales Representative

© 2026 Avison Young Commercial Real Estate Services, LP, Brokerage. All rights reserved.

E. & O.E.: The information contained herein was obtained from sources which we deem reliable and, while thought to be correct, is not guaranteed by AvisonYoung.

222 Bay Street, Suite 2500 | Toronto, ONM5K 1J5 | +1 416 955 0000

**ALLIED**

**AVISON  
YOUNG**