
AVISON YOUNG

For Lease

SOLO District - Phase 3

4402 Skyline Drive
Burnaby, BC

Final full floor of brand new A class office space available at SOLO District with turnkey options available from 2,868 to 15,754 sf

Glenn Gardner*, Principal
604 647 5092
glenn.gardner@avisonyoung.com
**Glenn Gardner Personal Real Estate Corporation*

Stephanie Yeargin, Senior Associate
604 757 4985
stephanie.yeargin@avisonyoung.com



Office space for lease

Solo District - Phase 3
4402 Skyline Drive, Burnaby, BC

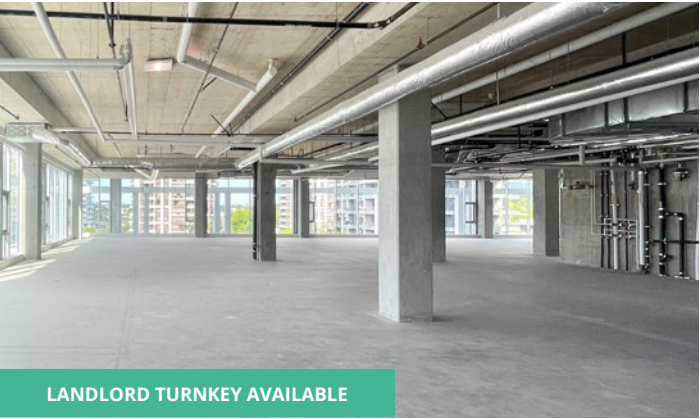
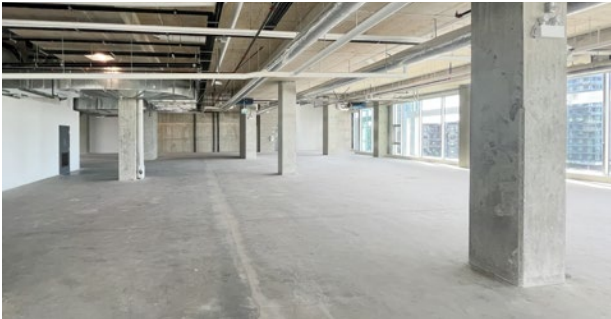


Location

SOLO District offers tenants convenient access to all kinds of shops, services, restaurants and transit within walking distance of the property. Conveniently situated in the heart of Burnaby's Brentwood neighbourhood, just off the corner of Lougheed Highway and Willingdon Avenue, SOLO District serves as a self-sufficient ecosystem where prospective tenants have everything they need at their feet and excellent access from all parts of Metro Vancouver via close by major arterial routes.

Property highlights

- Convenient SkyTrain access
- Retail at grade
- Office podium with residential above



Property details

4TH FLOOR
2,868 sf to 15,754 sf
**Inquire about turnkey options*

AVAILABLE
Immediately

NET RENT
Please contact listing agents

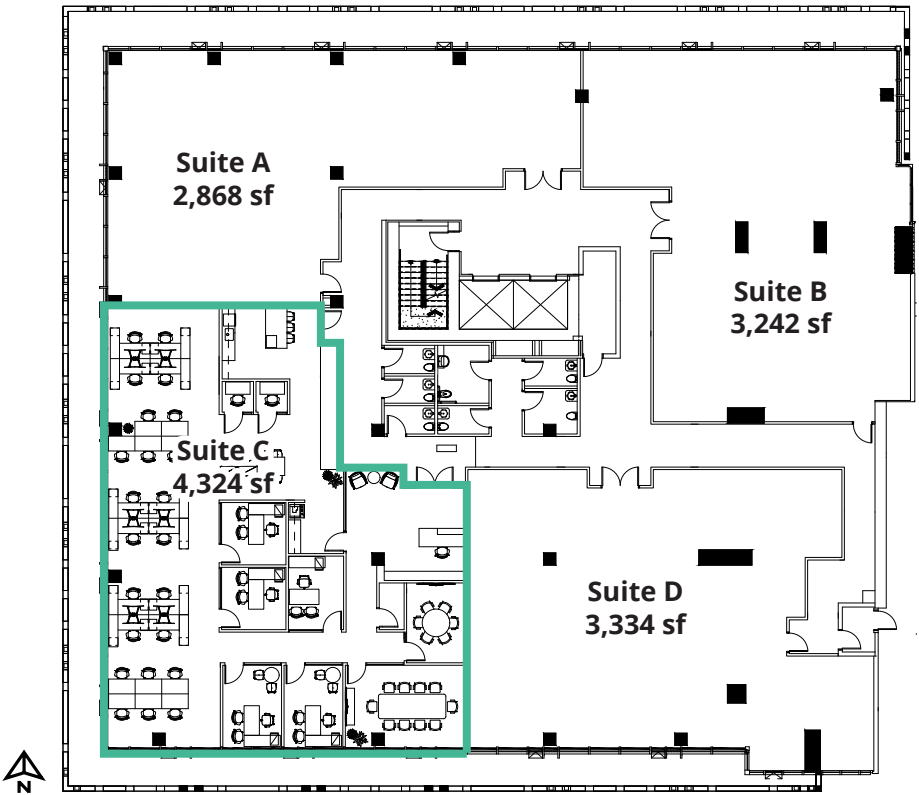
ADDITIONAL RENT
\$18.46 psf (2024 estimate)

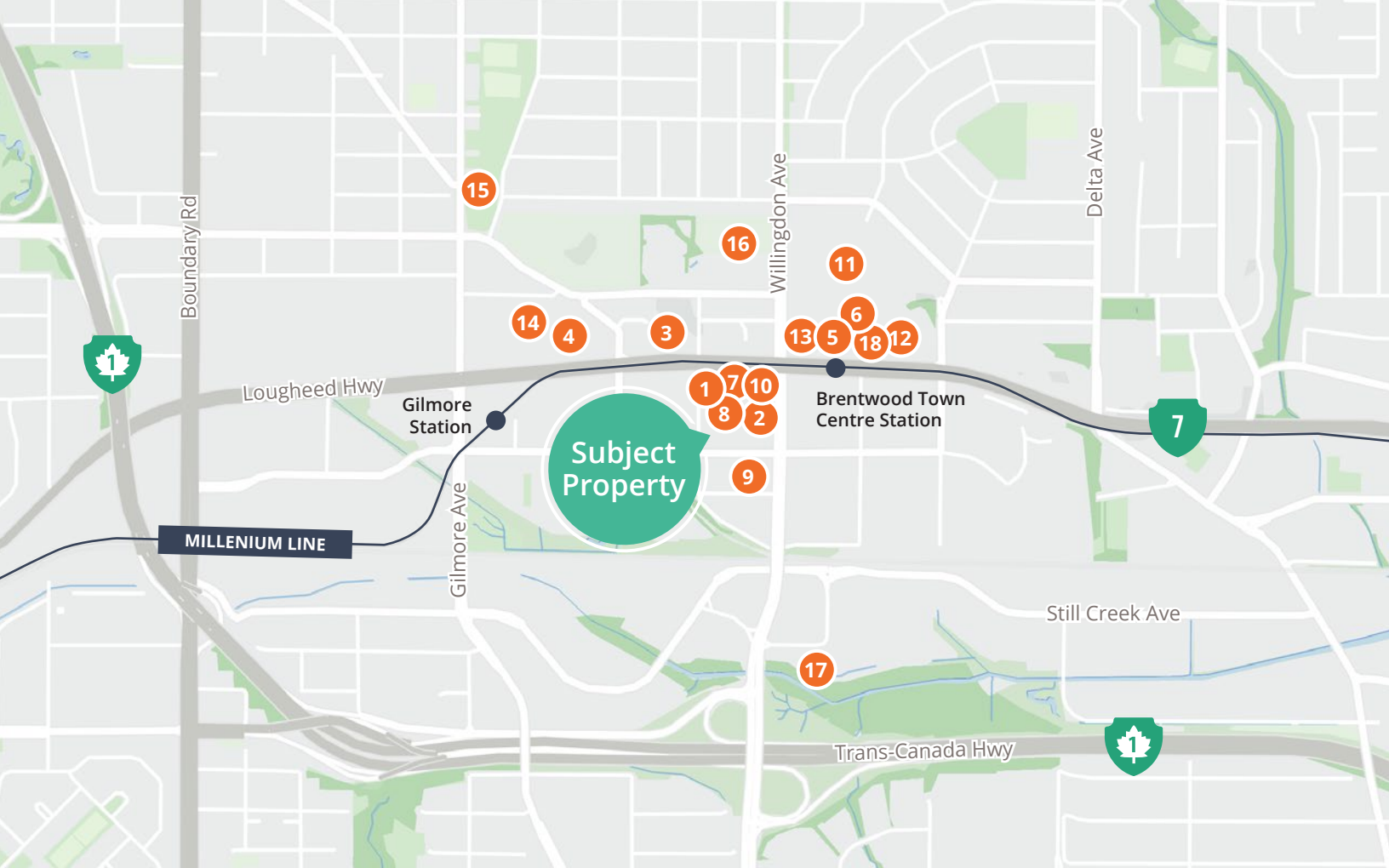
PARKING
1 stall per 500 sf leased
18 visitor stalls available for use



Suite C show suite underway

- Reception & waiting area
- Five (5) offices
- Open area
- Large meeting room
- Medium meeting room
- Two (2) phone booths
- Kitchen
- Copy/print room
- IT closet





 **86** Walk Score
"Very Walkable"

 **76** Transit Score
"Excellent Transit"

 **77** Bike Score
"Very Bikable"

Nearby amenities

- | | | |
|-------------------------|---|--|
| 1. Whole Foods Market | 7. Shoppers Drug Mart | 13. RBC Royal Bank |
| 2. BCLIQUOR Solo | 8. Starbucks | 14. Club16 Trevor Linden Fitness |
| 3. JOEY Burnaby | 9. F45 Training Burnaby West | 15. Willingdon Heights Dog Park |
| 4. Cactus Club Cafe | 10. Trinity Physiotherapy, Sport and Wellness | 16. Beth Israel Memorial Park |
| 5. Starbucks | 11. The Amazing Brentwood | 17. The Keg Steakhouse + Bar - Burnaby |
| 6. Earl's Kitchen + Bar | 12. Scotiabank | 18. OEB Breakfast Co. |

Contact for more information

Glenn Gardner*, Principal
604 647 5092
glenn.gardner@avisonyoung.com

*Glenn Gardner Personal Real Estate Corporation

Stephanie Yeargin, Senior Associate
604 757 4985
stephanie.yeargin@avisonyoung.com

#2900-1055 West Georgia Street
P.O. Box 11109 Royal Centre
Vancouver, BC V6E 3P3, Canada

avisonyoung.ca

**AVISON
YOUNG**

**BEST
MANAGED
COMPANIES**
Platinum member

© 2024 Avison Young. Information contained herein was obtained from sources deemed reliable and, while thought to be correct, have not been verified. Avison Young does not guarantee the accuracy or completeness of the information presented, nor assumes any responsibility or liability for any errors or omissions therein.