

FOR SALE

Turnkey Commercial Investment
Land, Building, & Established Business



CENTRAL EDMONTON

10909 107 Ave NW,
Edmonton, AB

This 19,166 SF site offers a rare opportunity to acquire the land, building, and established convenience store business, complete with all equipment and fixtures. Located in Central Edmonton, the property benefits from excellent visibility and accessibility.

\$2,699,000



Cal Halasz

Commercial Sales/ Leasing
780-554-0979
calhalasz@outlook.com

Gurprit Gill

Commercial Sales/ Leasing
587-501-9936
ggillyeg@gmail.com

RE/MAX COMMERCIAL

Suite 200, 10835 124 St NW
Edmonton, AB T5M 0H4

Property Details

10909 107 Ave NW,
Edmonton, AB

Legal Description: Plan 7620578;Block 9;
Lot 299

Land Area: +/- 0.44 Acres (19,166 Square Feet)

Building Size: 2940 Square Feet

Building Year: 2017

Business Type: Convenience Store (Fully
Equipped with Kitchen).

Site Redevelopment Potential:

Zoning: Mixed Use (MU h16 f3.5 cf)

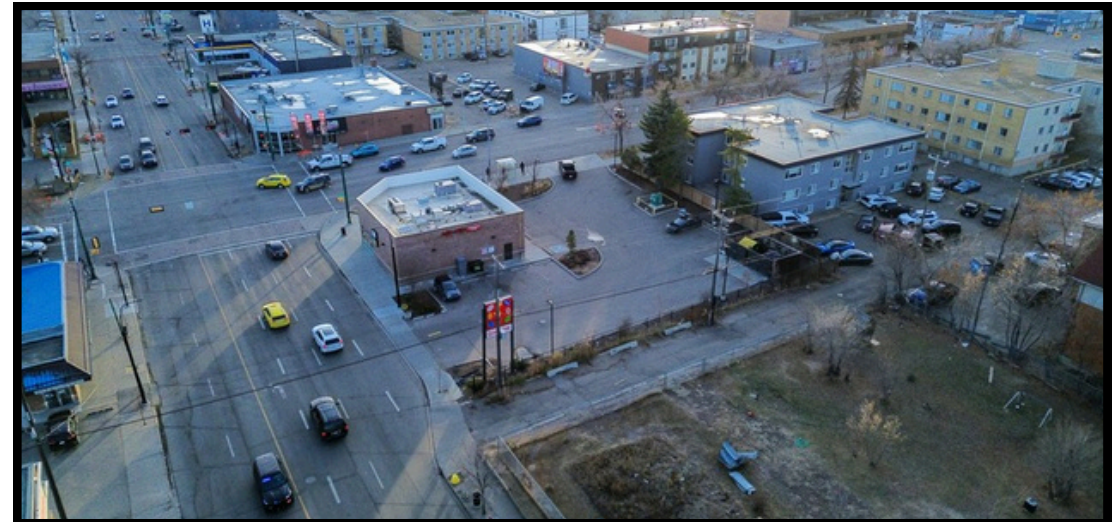
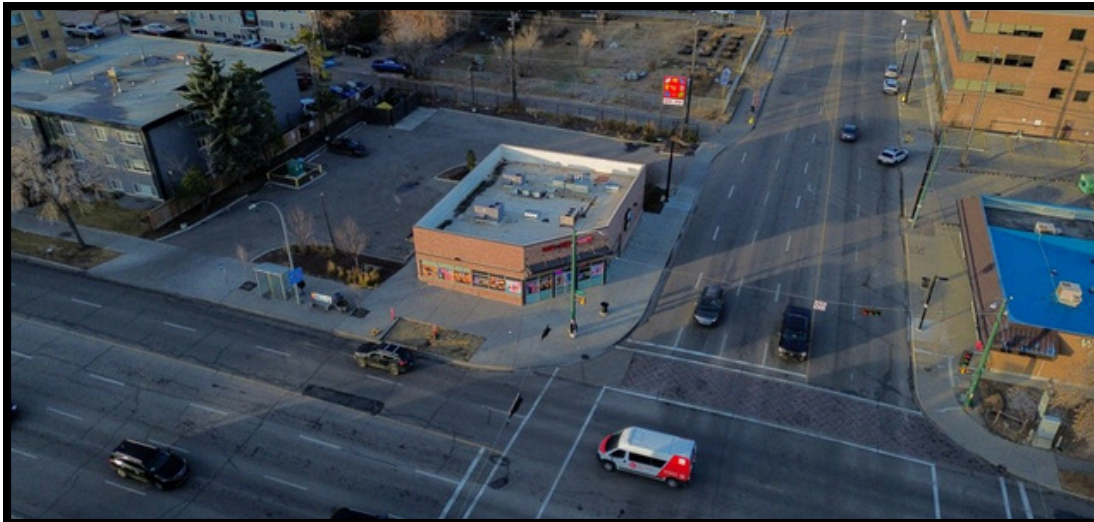
- Height Modifier (h16): Up to 16 m (approx. mid-rise form; storeys vary by design).
- Density Modifier (f3.5): Max FAR 3.5
~5,144 m² (~55,372 sq ft) total floor area
- Commercial Frontage (cf): Active, street-oriented nonresidential at grade is required

Property Highlights

- High Exposure Corner Lot in a transitioning urban district.
- Surrounded by high-density residential, schools, and daily amenities.
- Rapid revitalization and redevelopment activity shaping the area.
- Close to key institutions: MacEwan University, NAIT, Royal Alexandra Hospital.
- Walkable, transit-accessible, and connected to major routes (109 St, Kingsway, Yellowhead).
- Sale includes turnkey convenience store fully equipped with equipment & fixtures.
- Immediate access to major corridors (107 Ave, 109 St, Kingsway, Yellowhead)

Property Overview

10909 107 Ave NW,
Edmonton, AB



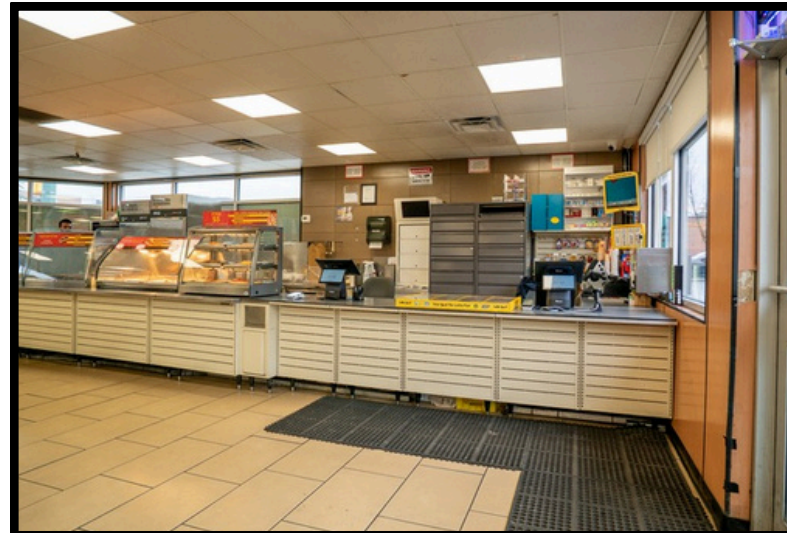
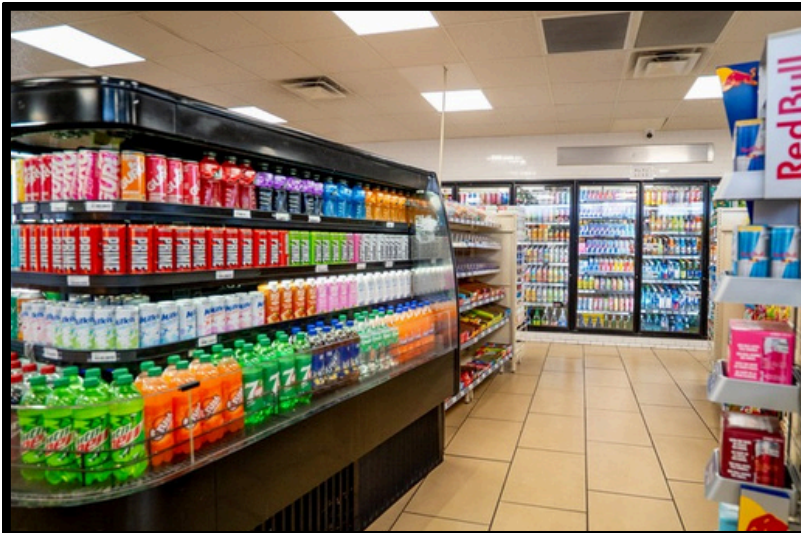
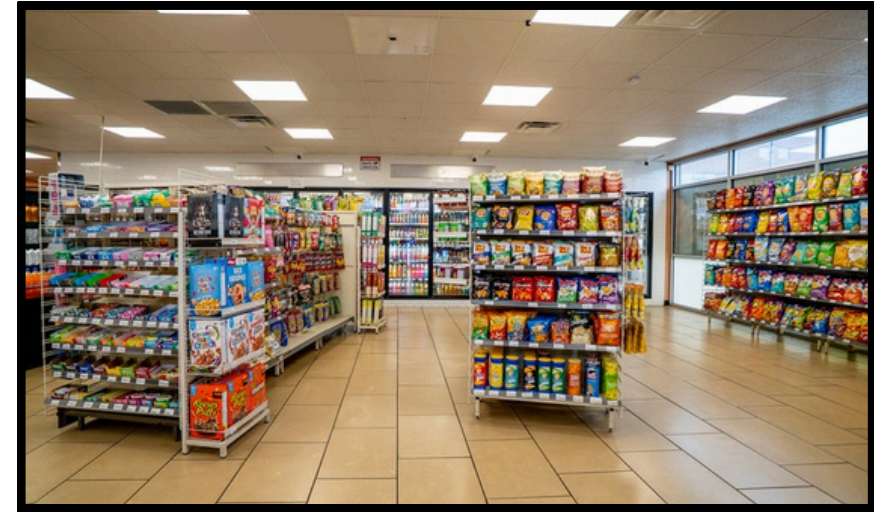
Cal Halasz
Commercial Sales/ Leasing
780-554-0979
calhalasz@outlook.com

RE/MAX
REAL ESTATE
COMMERCIAL

Gurprit Gill
Commercial Sales/ Leasing
587-501-9936
ggillyeg@gmail.com

Interior Photos

10909 107 Ave NW,
Edmonton, AB



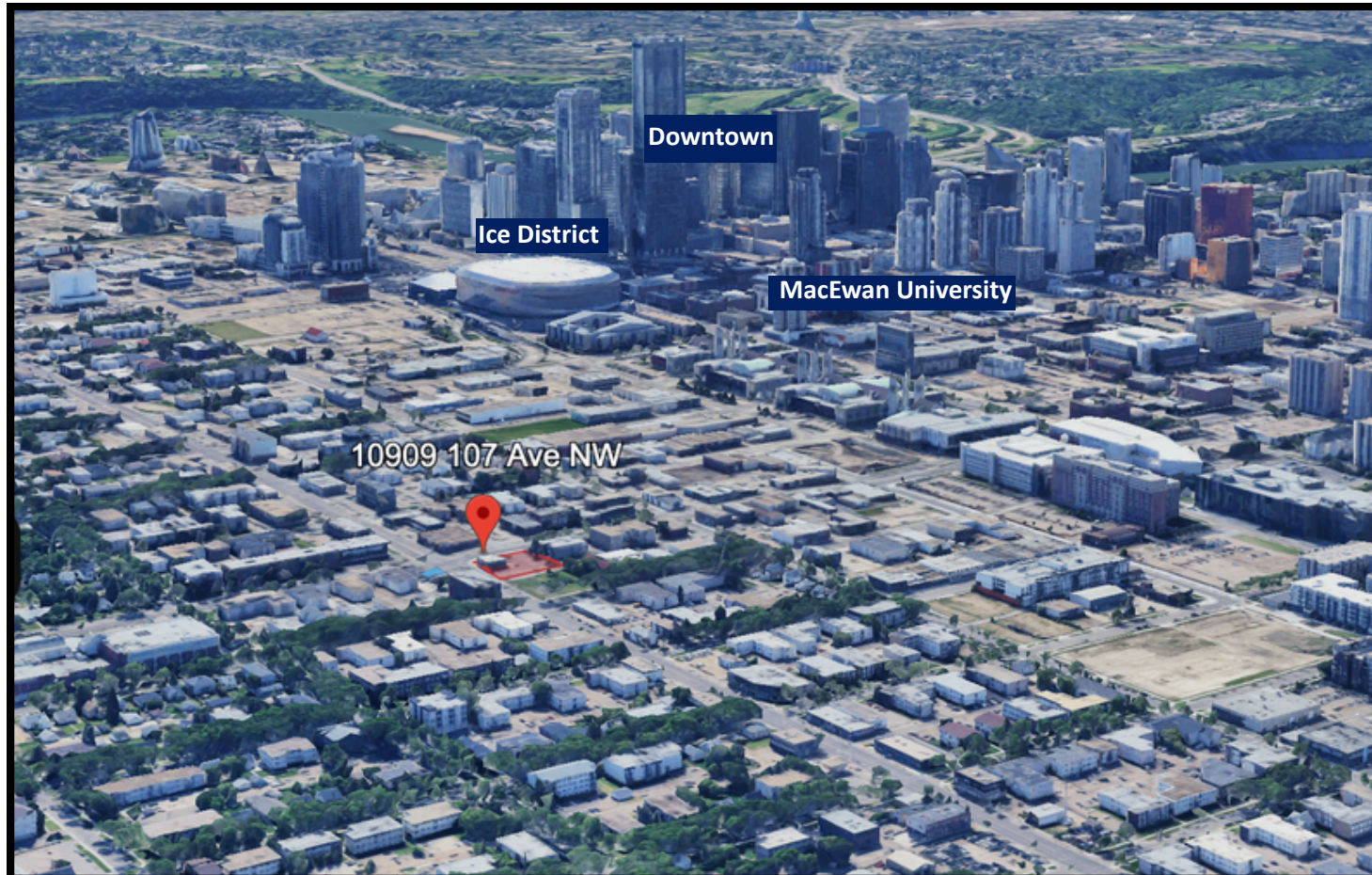
Cal Halasz
Commercial Sales/ Leasing
780-554-0979
calhalasz@outlook.com

RE/MAX
REAL ESTATE
COMMERCIAL

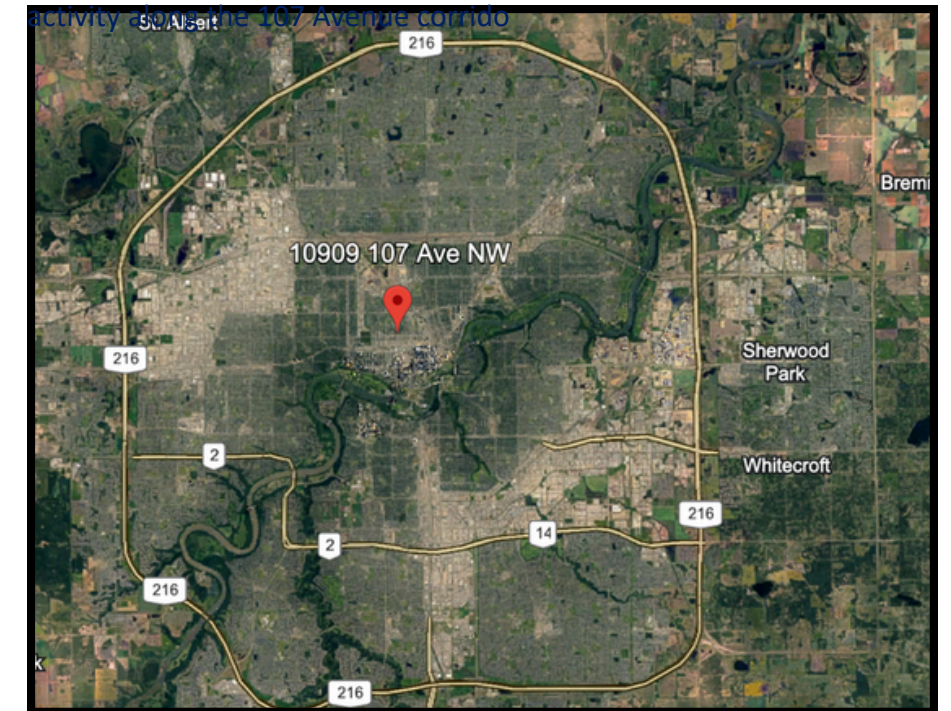
Gurprit Gill
Commercial Sales/ Leasing
587-501-9936
ggillyeg@gmail.com

Location

10909 107 Ave NW,
Edmonton, AB



Central McDougall and Queen Mary Park are mature inner-city communities undergoing steady transformation, driven by ongoing infill and redevelopment. In recent years, the area has seen a rise in mid-rise residential projects, growing interest from institutional and community-service users, and a noticeable strengthening of retail and commercial



The information contained herein has been obtained from various sources considered reliable. RE/ MAX Real Estate Edmonton Ltd. does not make any representations or warranty, expressed or implied, as to the accuracy or completeness of the information or statements contained herein.

Cal Halasz
Commercial Sales/ Leasing
780-554-0979
calhalasz@outlook.com



Gurprit Gill
Commercial Sales/ Leasing
587-501-9936
ggillyeg@gmail.com