

FOR LEASE

AVAILABLE NOW

The Dillon

5268 SACKVILLE ST, HALIFAX

PRIME RETAIL SPACE
IN DOWNTOWN HALIFAX



CBRE

General Overview

LOCATION

Welcome to the Dillon. This new mixed use building is positioned in an amazing location in the heart of Downtown Halifax. Located just steps from the ever popular entertainment district on Argyle Street and the high traffic Spring Garden Road, this building is positioned for success.

Woven into the unique streetscape of Downtown Halifax, this historic yet modern building is walking distance from many large office complexes, hotels, public green spaces and the Nova Centre; one of Halifax's most prominent office and conference hosting venues where thousands visit each year.

PROPERTY

Civic Address: 5268 Sackville Street

Property Type: Mixed use building with 39 high end apartments and ground floor commercial space

Space Available: 4,400 sq. ft. of lower level space on Sackville St
1,818 sq. ft. of ground floor space on Market St

Rent: Please contact

Utilities: Tenant's responsibility

Available: Immediately



High profile downtown commercial space



Exceptional visibility and foot traffic



Character building with unique features



Convenient Downtown location



A blend of old and new Halifax design

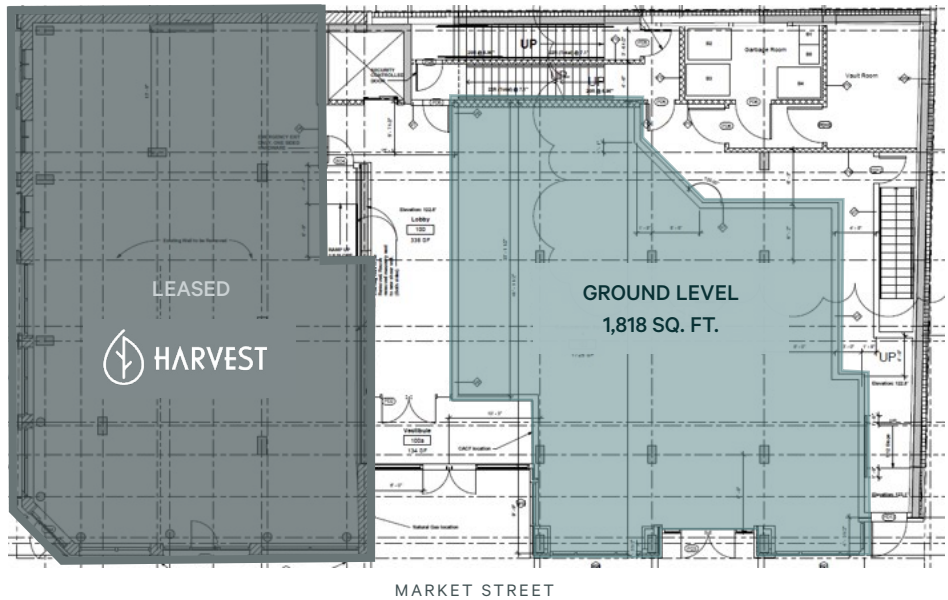
Highlights

You will love the energy of Downtown Halifax and operating your business in the Dillon puts you in the heart of it all. Here you will benefit from the traffic brought to the area by the Nova Centre, Sutton Place Hotel, the ever popular Argyle Street and by Harvest, Halifax's newest and freshest quick service restaurant located on site.

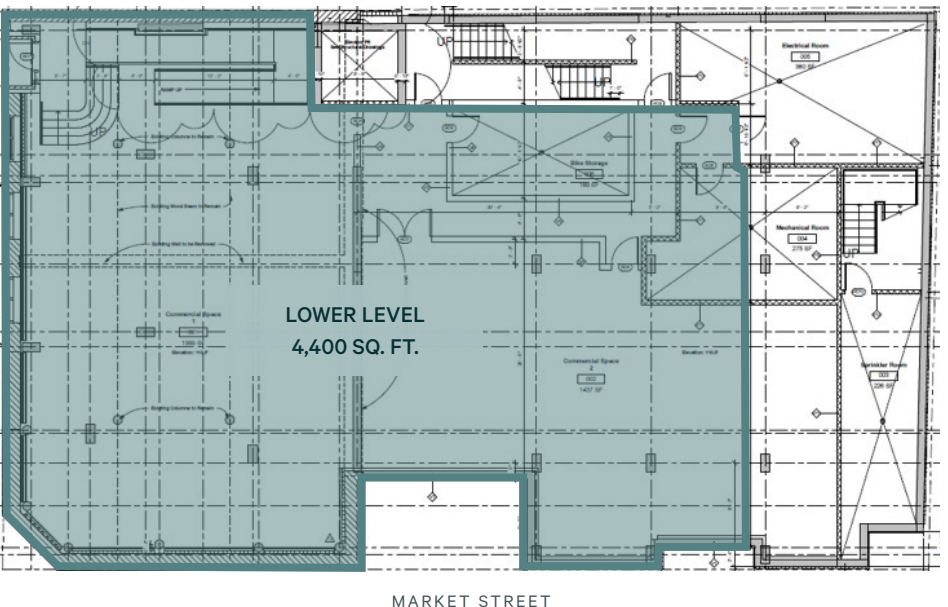
Customers and staff will be wowed by the sleek glass apartment tower which rises above the restored 1800's exterior which blends modern design with classic Halifax character. Now is the time to take advantage of these open concept floor plates and design your space to bring your vision to life.

FLOORPLANS

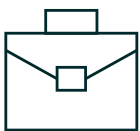
FIRST FLOOR



LOWER FLOOR



Street Level Signage & Advertising Opportunities



Close Proximity to Large Office Developments



Ideal for Retail, Service Retail & Food Service

Building Photos



Unit Photos

Market Street 1,818 sq. ft.





For more information, please contact:

Donald Tabor
Senior Sales Associate
902 492 2061
donald.tabor@cbre.com

CBRE

This disclaimer shall apply to CBRE Limited, Real Estate Brokerage, and to all other divisions of the Corporation; to include all employees and independent contractors ("CBRE"). The information set out herein, including, without limitation, any projections, images, opinions, assumptions and estimates obtained from third parties (the "Information") has not been verified by CBRE, and CBRE does not represent, warrant or guarantee the accuracy, correctness and completeness of the Information. CBRE does not accept or assume any responsibility or liability, direct or consequential, for the Information or the recipient's reliance upon the Information. The recipient of the Information should take such steps as the recipient may deem necessary to verify the Information prior to placing any reliance upon the Information. The Information may change and any property described in the Information may be withdrawn from the market at any time without notice or obligation to the recipient from CBRE. CBRE and the CBRE logo are the service marks of CBRE Limited and/or its affiliated or related companies in other countries. All other marks displayed on this document are the property of their respective owners. All Rights Reserved. Mapping Sources: Canadian Mapping Services canadamapping@cbre.com; DMTI Spatial, Environics Analytics, Microsoft Bing, Google Earth.