

# For Lease

## Centre on 96<sup>th</sup>

D225/D225M – 19358 96th Avenue, Surrey

UNIT SIZE	BASIC RENT	ADDITIONAL RENT (2026)	MONTHLY MANAGEMENT FEE	MONTHLY GROSS RENT	AVAILABILITY	TERM LENGTH
3,125 sf	\$19.50 psf	\$7.82	\$356.77	\$7,471.36	Immediate	3 – 5 years

## Unit features



Desirable rear-loading front office configuration



Two (2) washrooms



12' (W) by 14' (H) grade level loading



Two (2) office



20' clear ceiling heights



Sprinklered



Mezzanine space

**Ilya Tihanenoks**, Principal  
604 260 1869  
ilya.t@avisonyoung.com

**Gord Robson\***, Principal  
604 647 1331  
gord.robson@avisonyoung.com  
\*Personal Real Estate Corporation

**Riley Stephen**, Sales Assistant  
604 757 4924  
riley.stephen@avisonyoung.com

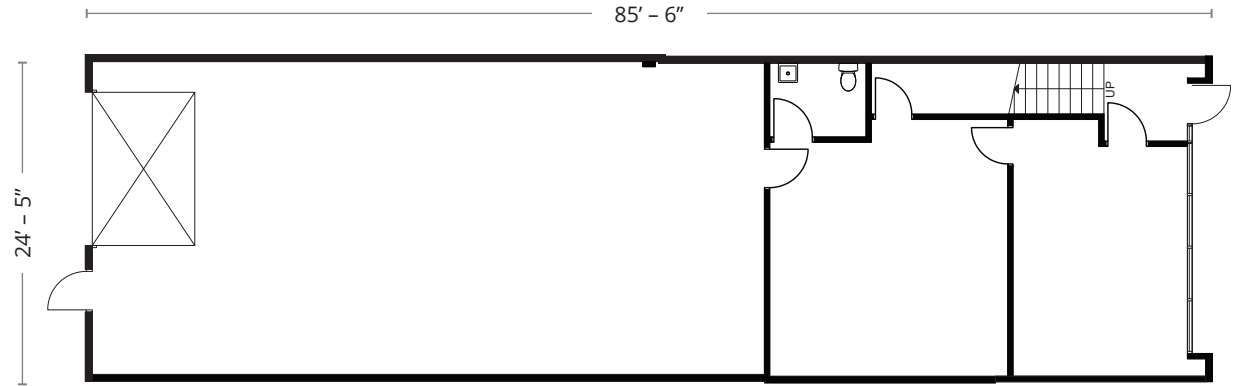
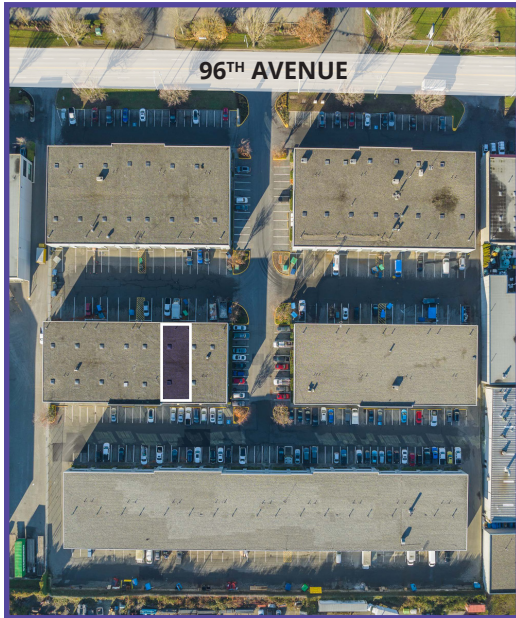
wesgroup

**AVISON  
YOUNG**

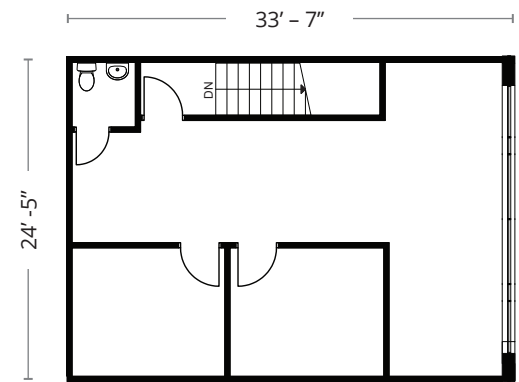
# UNIT D225/D225M



Main floor	2,250 sf
Mezzanine	875 sf
<b>Total</b>	<b>3,125 sf</b>



Main floor



Mezzanine

**Ilya Tihanenoks**, Principal  
604 260 1869  
ilya.t@avisonyoung.com

**Gord Robson\***, Principal  
604 647 1331  
gord.robson@avisonyoung.com  
*\*Personal Real Estate Corporation*

**Riley Stephen**, Sales Assistant  
604 757 4924  
riley.stephen@avisonyoung.com

**wesgroup**

**AVISON  
YOUNG**