

The logo for NAI Commercial, featuring the letters 'NAI' in a bold, sans-serif font with a red diagonal line through the 'A', followed by the word 'Commercial' in a smaller, black, sans-serif font.

NAICommercial

A red diagonal banner in the top right corner of the image, containing the text '# 2,445 SF' in white, bold, sans-serif font.

2,445 SF

An aerial view of a modern glass skyscraper in a city, reflecting the surrounding buildings and sky. The building is the central focus, with other high-rise buildings visible in the background and foreground.

#850 - 605 Robson Street | Vancouver, BC

FOR LEASE

Opportunity to lease very well improved office space in Downtown Vancouver, located on the North West corner of Robson and Seymour Streets. Steps away from the Canada Line, SkyTrain, bus routes, shops, cafés, and restaurants. Well maintained building with on site management.

Roy Gibbs, LL.B
Personal Real Estate Corporation
Commercial Leasing & Sales
778 834 4050
rgibbs@naicommercial.ca

Chris Oteman, B.Sc.
Commercial Leasing & Sales
604 828 0535
coteman@naicommercial.ca

NAI Commercial
1075 W Georgia St, Suite 1300
Vancouver, BC V6E 3C9
+1 604 683 7535
naicommercial.ca

#850 - 605 Robson Street

Vancouver, BC

Property Details

Unit Size: ± 2,445 SF

Net Rent: \$27.00/SF

Additional Rent: \$22.62/SF (2026)

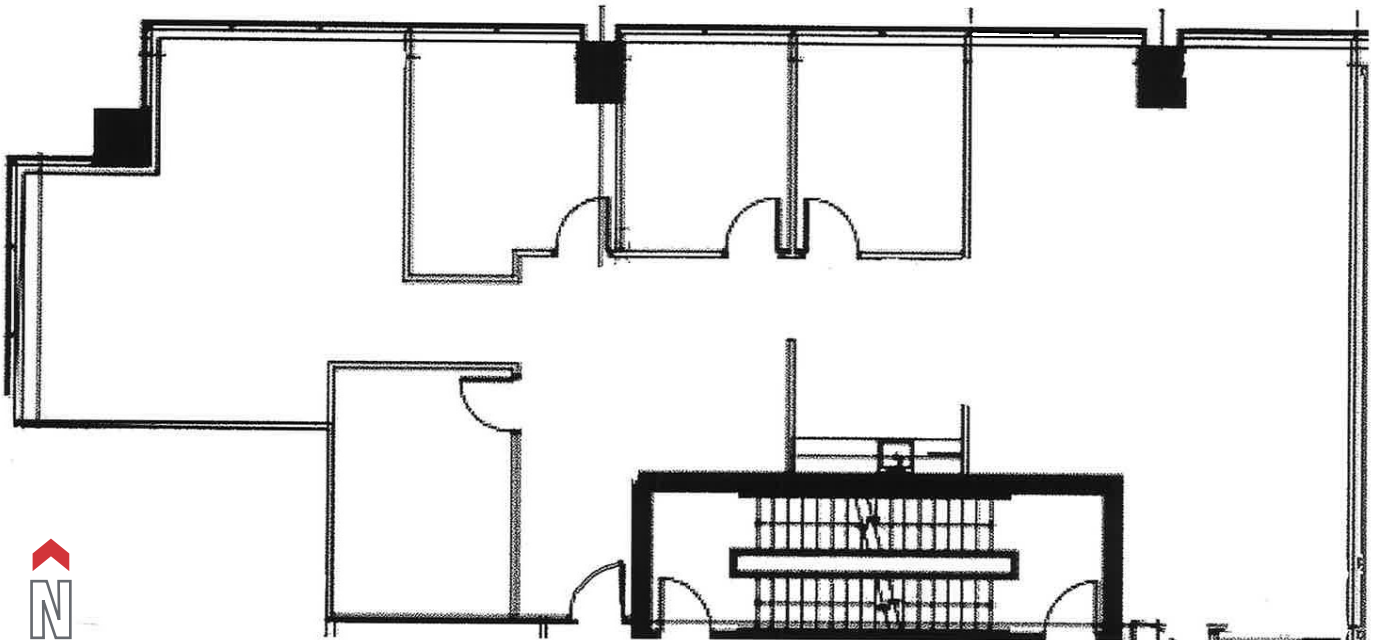
Availability: Immediately

Premises:

- ▶ Improved with 3 offices, meeting room, kitchenette and two open spaces.
- ▶ Premises are north and west facing and large, full height windows provide abundant natural light.
- ▶ Possible to add more offices or expand into the neighboring space if necessary.

Building Details:

- ▶ Close to Skytrain, Pacific Centre, the Supreme Court, Vancouver Art Gallery, and numerous restaurants & cafes
- ▶ Abundant visitor parking and secure tenant parking
- ▶ Secure bike storage.
- ▶ New showers and clothes dryers
- ▶ On-site building ownership, management and dedicated maintenance team
- ▶ Updated elevators



Roy Gibbs, LL.B

Personal Real Estate Corporation
Commercial Leasing & Sales
778 834 4050
rgibbs@naicommercial.ca

Chris Oteman, B.Sc.

Commercial Leasing & Sales
604 828 0535
coteman@naicommercial.ca




**VANCOUVER
CITY CENTRE**


GRANVILLE

PACIFIC CENTRE

ROBSON SQUARE

**605
ROBSON**

**LAW
COURTS**

ORPHEUM

**VANCOUVER
PUBLIC LIBRARY**

SEYMOUR ST

ROBSON ST

WITHIN 5-MIN WALKING DISTANCE

- Five Guys
- Meat & Bread
- Blenz Coffee
- Aladdin Café
- Guu Japanese
- Bahar Bakery & Cafe
- H-Mart
- Cafe Monet Bakery
- Tractor Foods
- JINYA Ramen
- JAPADOG
- CIBC Bank
- The Ox Pub
- Chipotle Mexican
- Jollibee
- Starbucks
- Tim Hortons
- Glowbal
- London Drugs
- Pacific Centre
- Hudson's Bay
- Popeyes
- McDonald's
- Dublin Calling Bar
- Staples
- Fable Diner & Bar
- Cafe Medina
- Viet Sub Vietnamese
- Falafel King
- Paramount Fine Foods
- Gong Cha
- Taf's Cafe
- The Fountainhead Pub

Roy Gibbs, LL.B
 Personal Real Estate Corporation
 Commercial Leasing & Sales
 778 834 4050
 rgibbs@naicommercial.ca

Chris Oteman, B.Sc.
 Commercial Leasing & Sales
 604 828 0535
 coteman@naicommercial.ca



No warranty or representation, express or implied, is made as to the accuracy of the information contained herein, and the same is submitted subject to errors, omissions, change of price, rental or other conditions, prior sale, lease or financing, or withdrawal without notice, and of any special listing conditions imposed by our principals no warranties or representations are made as to the condition of the property or any hazards contained therein are any to be implied. Aerial image(s) courtesy of Google, Landsat/Copernicus

NAI Commercial
 1075 W Georgia St, Suite 1300
 Vancouver, BC V6E 3C9
 +1 604 683 7535
 naicommercial.ca