

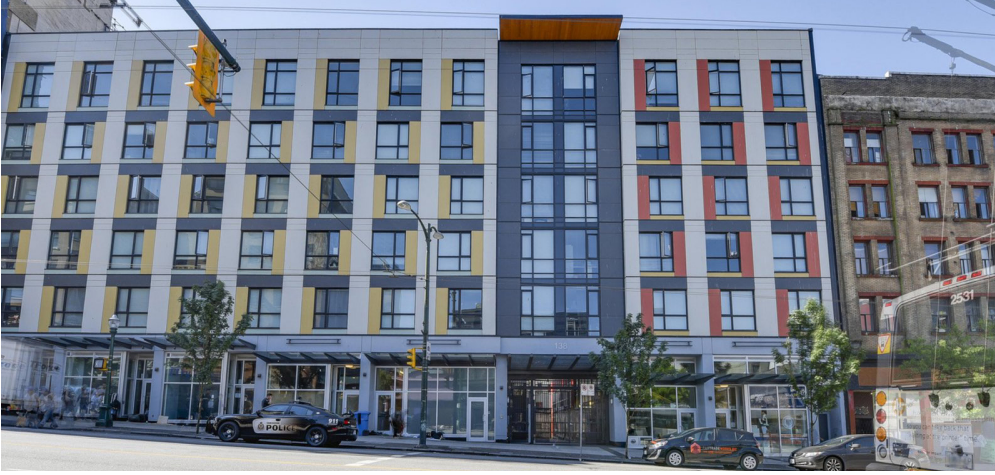
#120 - 138 E Hastings Street | Vancouver, BC

FOR SALE | Main floor office space in a newer six-storey residential building

Opportunity to purchase a new strata office property in Vancouver's Downtown Eastside, centrally situated between Columbia and Main Street on East Hastings St.

Brian Mackenzie
Vice President, Leasing & Sales
604 691 6618
bmackenzie@naicommercial.ca

NAI Commercial
1075 W Georgia St, Suite 1300
Vancouver, BC V6E 3C9
+1 604 683 7535
naicommercial.ca



#120 - 138 E Hastings Street

Vancouver, BC

Property

The property consists of two main floor strata lots totaling 3,408 SF, with direct street level access from Hastings Street with windows facing the courtyard. The space is nicely improved as a professional office space.

Location

Located in the Downtown Eastside between Columbia Street and Main Street on East Hastings Street. Minutes from the Stadium Chinatown Skytrain Station.

Building

A new six-storey residential building with main floor commercial space built in 2015.

Tenancy

The space is vacant for immediate possession.



Property Details

Civic Address

138 E Hastings St, Unit #120,
Vancouver, BC, V6A 1N4

Legal Description

Strata Lots 88 & 89, Plan EPS3084, District Lot 196, Group 1, New Westminster Land District, together with an interest in the common property in proportion to the unit entitlement of the strata lot as shown on Form V.

PIDs

029-719-585, 029-719-593

Strata Lot Size

3,408 SF

Parking

Two stalls

Zoning

DEOD (Downtown-Eastside/
Oppenheimer District)

Assesment (2025)

Land	\$790,000
Building	\$842,000
Total	\$1,632,000

Strata Fees

\$2,743 per month

Property Taxes (2025)

\$18,588

Revised Price

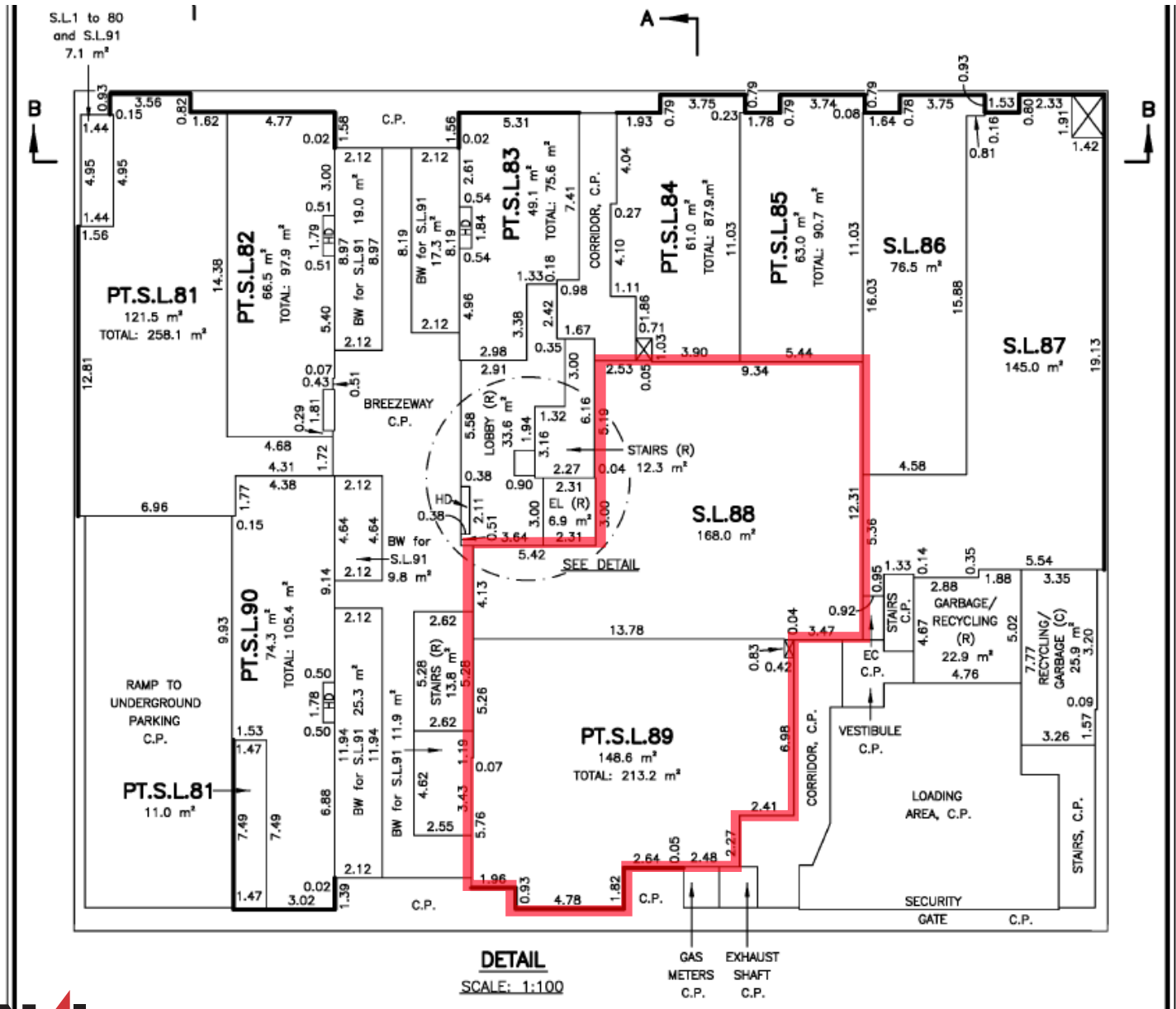
\$998,000 (\$293 per SF)

Brian Mackenzie

Vice President, Leasing & Sales
604 691 6618
bmackenzie@naicommercial.ca



Floor Plan



CANADA PLACE

ALONG EAST HASTINGS STREET

- BMO BANK OF MONTREAL
- PHARMASAVE
- BC LIQUOR STORE
- L'ARTISTA ITALIAN
- HIRO SUSHI
- CAFFE ARTIGIANO
- EXPERT PHYSIO
- CHAD THAI
- STAN'S PIZZA JOINT
- SAFeway
- STARBUCKS
- TD CANADA TRUST
- RBC ROYAL BANK
- BLISS CAFE
- VALLEY BAKERY
- CIOFFI'S MEAT MARKET
- ANTON'S PASTA BAR
- KAZU JAPANESE

120-138
E HASTINGS ST

E HASTINGS ST

STADIUM-CHINATOWN STATION



ANDY LIVINGSTONE PARK

ROGERS ARENA

BC PLACE

MAIN ST

Brian Mackenzie
 Vice President
 Leasing & Sales
 604 691 6618
 bmackenzie@naicommercial.ca

NAI Commercial

No warranty or representation, express or implied, is made as to the accuracy of the information contained herein, and the same is submitted subject to errors, omissions, change of price, rental or other conditions, prior sale, lease or financing, or withdrawal without notice, and of any special listing conditions imposed by our principals no warranties or representations are made as to the condition of the property or any hazards contained therein are any to be implied. Aerial image(s) courtesy of Google, Landsat/Copernicus

NAI Commercial
 1075 W Georgia St, Suite 1300
 Vancouver, BC V6E 3C9
 +1 604 683 7535
 naicommercial.ca