

SALE/LEASE

±4,400 Sq. Ft.

LIZOTTE
AND ASSOCIATES REAL ESTATE INC

PRICE REDUCED



10760 82 Avenue, Edmonton, AB

WHYTE AVE RETAIL BUILDING

Property Highlights

- ±3,200 Sq. Ft. of main floor retail space fronting Whyte Avenue
- ±1,200 Sq. Ft. second floor residential unit
- Main floor is currently demised into two ±1,600 SF units
- Hood and makeup air are in place in the west unit
- 5 Blocks from the U of A
- Heavy daytime traffic
- 4 tandem stalls in the back (8 stalls)
- Unique signage opportunity with high visibility



780.488.0888



www.lizotterealestate.com



#1200, 10117 Jasper Avenue
Edmonton, AB T5J 1W8

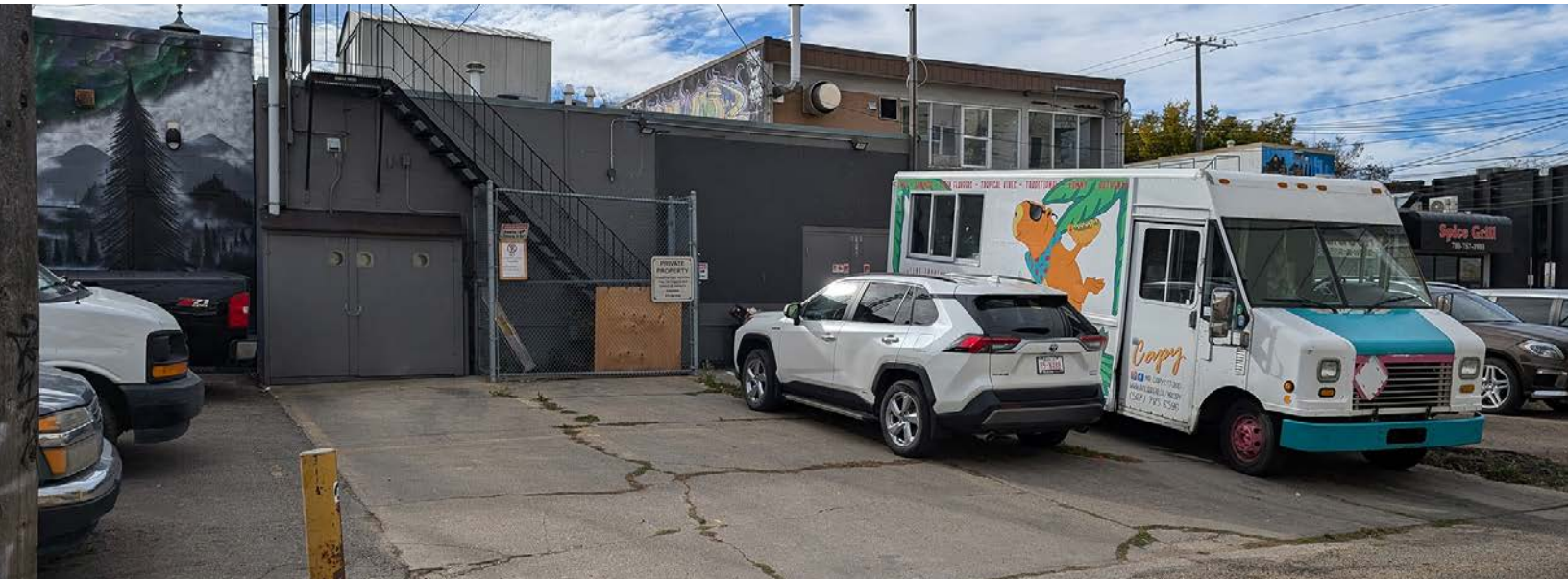


No warranty or representation, expressed or implied, is made as to the accuracy of the information contained herein, and same is submitted subject to errors, omissions, change of price, rental or other conditions, withdrawal without notice, and to any specific listing condition, imposed by our principals.

SALE/LEASE

Whyte Ave Retail Building

LIZOTTE
AND ASSOCIATES REAL ESTATE INC



SALE/LEASE

Whyte Ave Retail Building

LIZOTTE
AND ASSOCIATES REAL ESTATE INC

Property Information

Municipal Address: 10760 82 Avenue, Edmonton, AB

Building Size: Main ±3,200 SF (2 ±1,600 SF Units)
Second-floor ±1,200 SF
Total ±4,400 SF

Available Space: Main ±1,600 SF Unit
Second-floor ±1,200 SF Month-to-Month

Zoning: MU

Parking: 4x Tandem stalls (8)

Possession: Immediate

\$\$\$

Purchase Price: \$1,500,000.00
~~\$1,799,950.00~~

Lease Rate: \$35.00/Sq. Ft.

Op Costs: \$10.00/Sq. Ft.



Contact

Chuck Clubine
Senior Associate
Cell: 780.264.7773
Direct: 780.784.6553
chuck@lizotterealestate.com

Tom Dean
Associate
Cell: 780.920.8019
Direct: 780.784.6550
tom@lizotterealestate.com

Demographics within 5KM

