

TD Tower

Opportunity to Lease \pm 5,000-47,000 SF of
Prime Downtown Office Space

1914 Hamilton Street
Regina, SK, S4P 3N6
www.cbre.ca/saskatchewan

Leasing Agent Bonus of \$2.00 PSF

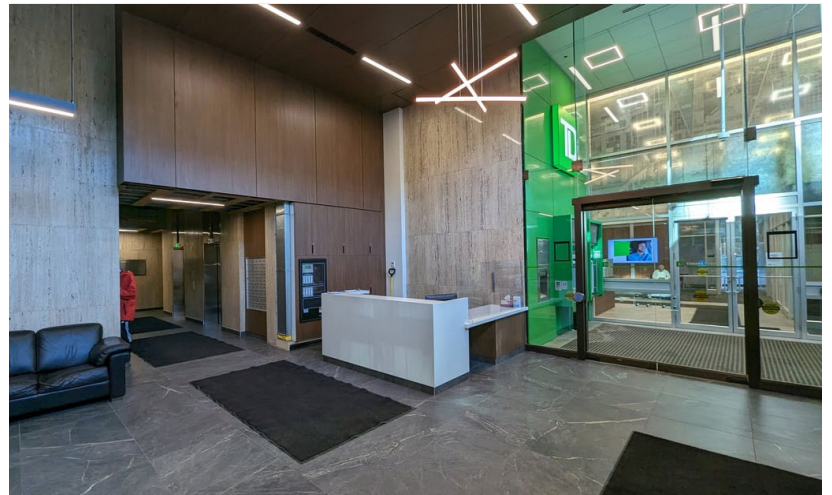


Building Highlights

TD Tower is a high-quality Class A office building offering flexible leasing opportunities, with demising options starting at 5,000 SF and full-floor availabilities of approximately 10,700 SF. The seven-storey property provides a total rentable area of 82,000 SF and includes street-level retail, creating a dynamic mix of workspace and amenities for tenants. The tower is currently undergoing a full six-side renovation, supported by updated lobbies and new flooring that together deliver a modern, professional arrival experience.

Prominently located at the southwest corner of 12th Avenue and Hamilton Street, TD Tower sits at the heart of Downtown Regina. The building benefits from strong visibility among surrounding mid- and high-rise office developments, ensuring excellent exposure to both vehicle and pedestrian traffic. Current tenants include TD Bank, Gerrand Rath Johnson LLP, Emsley & Associates, and Prairie Donair, contributing to a diverse and well-established occupancy mix.

With its central location, modern upgrades, and flexible floorplate options, TD Tower offers businesses a high-profile presence in one of Regina's most active commercial districts.



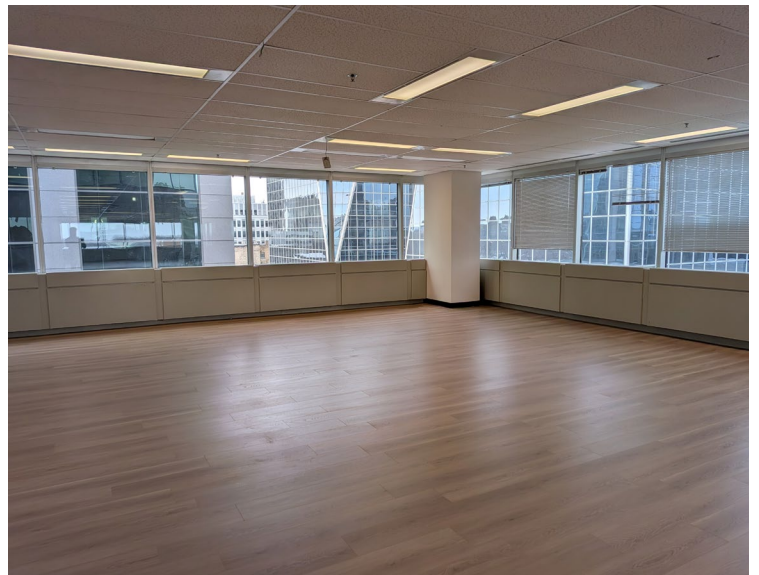
TD Tower

1914 Hamilton St | Regina, SK, S4P 3N6

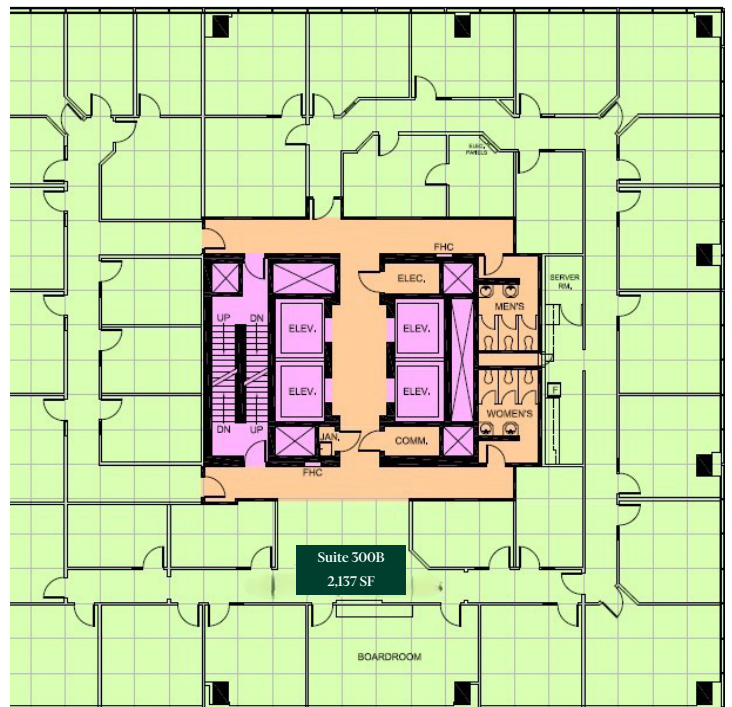
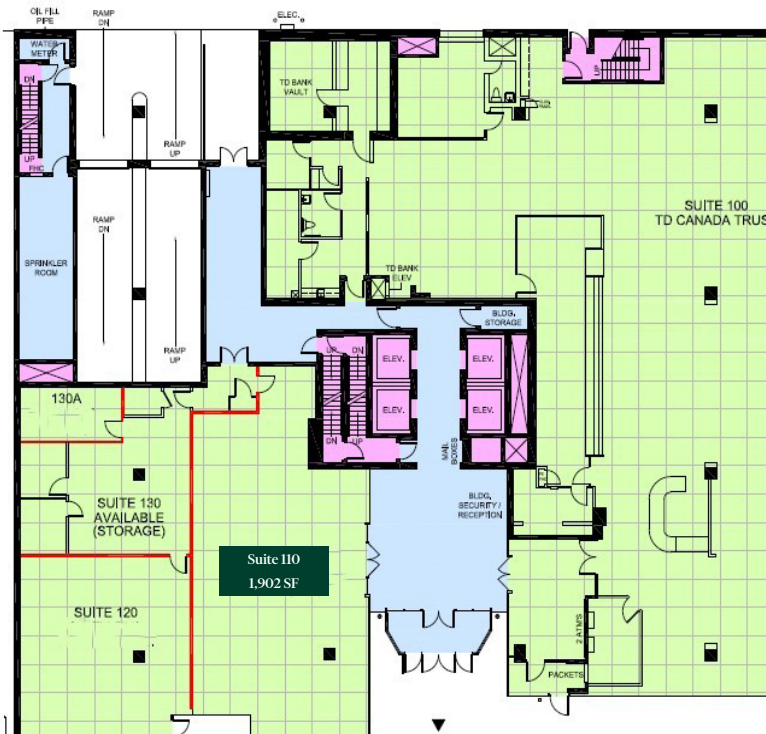
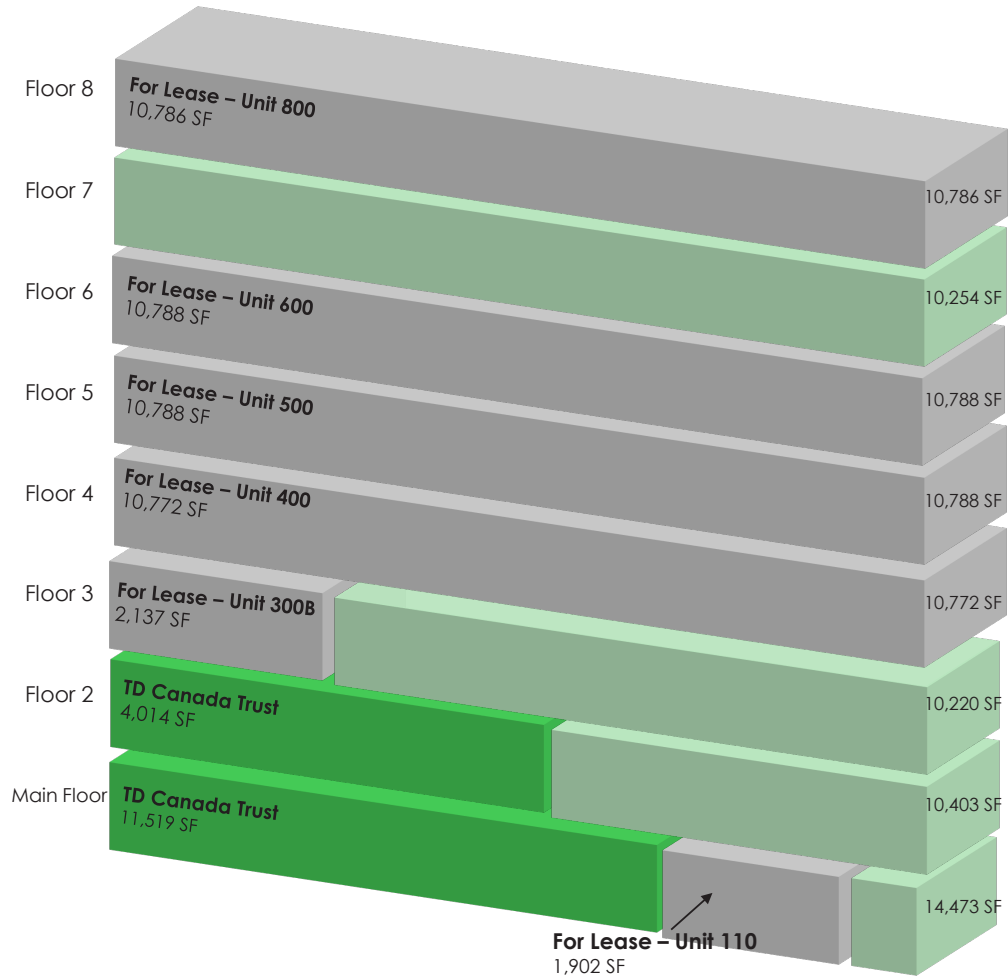
Office | For Lease

Leasing Details

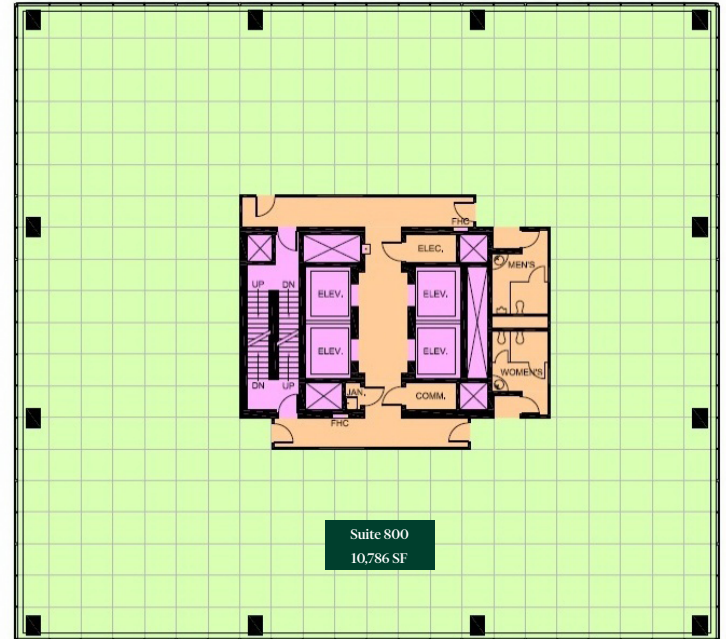
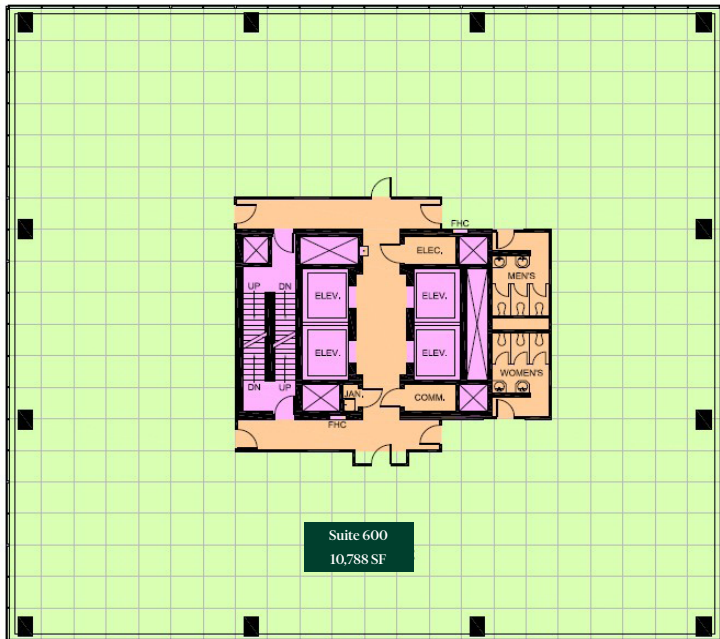
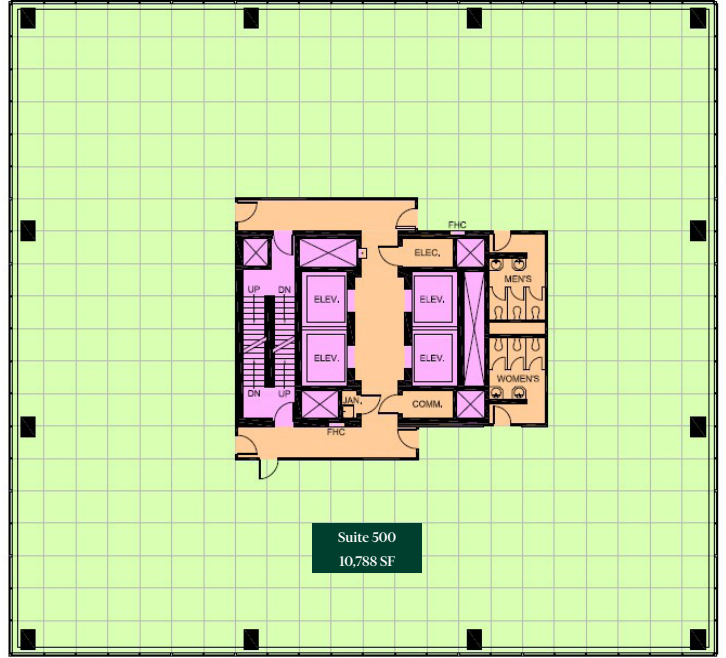
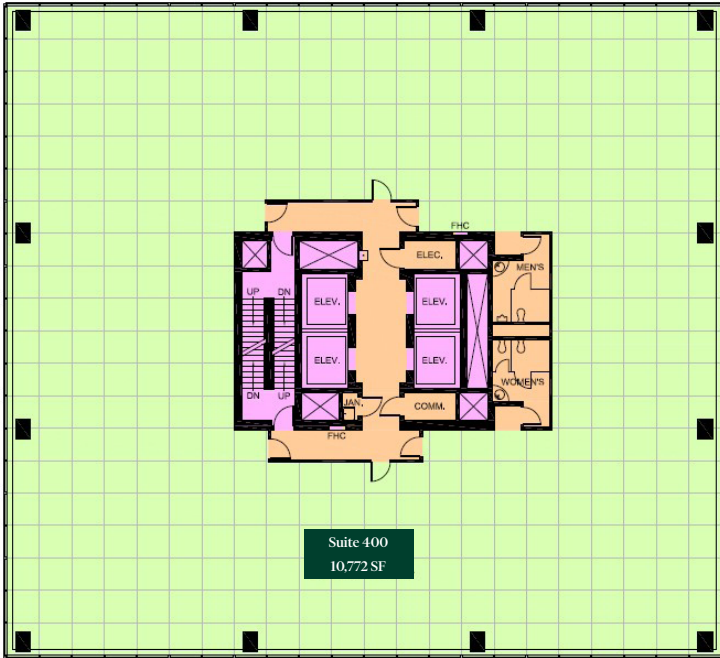
- + **Building Class:** A
- + **Net Rent:** \$14.50 PSF
- + **Operating Cost:** \$17.50 PSF
- + **Total Rentable Area:** 47,173 SF
- + **Availability:** Immediate (all units)
- + **Leasing Incentive:** Agent Bonus of \$2.00 PSF
- + **Available Units:**
 - Unit 110 - 1,902 SF
 - Unit 300B - 2,137 SF
 - Unit 400 - 10,772 SF
 - Unit 500 - 10,788 SF
 - Unit 600 - 10,788 SF
 - Unit 800 - 10,786 SF
- + **Parking Available for Lease:** 38 stalls



Floor Plans



Floor Plans



TD Tower

1914 Hamilton St | Regina, SK, S4P 3N6

Office | For Lease



LOCATION DETAILS

Located in the heart of Regina’s vibrant Downtown District, the TD Tower offers easy access to over 700 retail stores, services, restaurants, and attractions. Within easy walking distance, you’ll find City Hall, Victoria Park, and Cornwall Centre, southern Saskatchewan’s largest shopping mall.

TD Tower provides peace of mind with onsite building security and convenient access to underground, above-ground, and street parking at market rates. Enjoy seamless connectivity with Regina’s excellent public transit system and easy access to multiple bus routes.

Contact Us

Walker Moulding

Associate Vice President
+1 306 525 2273
Walker.Moulding@cbre.com

Erik Mehlsen

Sales Associate
+1 306 525 2273
Erik.Mehlsen@cbre.com

© 2026 CBRE, Inc. All rights reserved. This disclaimer shall apply to CBRE Limited, and to all divisions of the Corporation (“CBRE”). The information set out herein (the “Information”) has not been verified by CBRE, and CBRE does not represent, warrant or guarantee the accuracy, correctness and completeness of the Information. CBRE does not accept or assume any responsibility or liability, direct or consequential, for the Information or the recipient’s reliance upon the Information. The recipient of the Information should take such steps as the recipient may deem necessary to verify the Information prior to placing any reliance upon the Information. The Information may change and any property described in the Information may be withdrawn from the market at any time without notice or obligation to the recipient from CBRE.