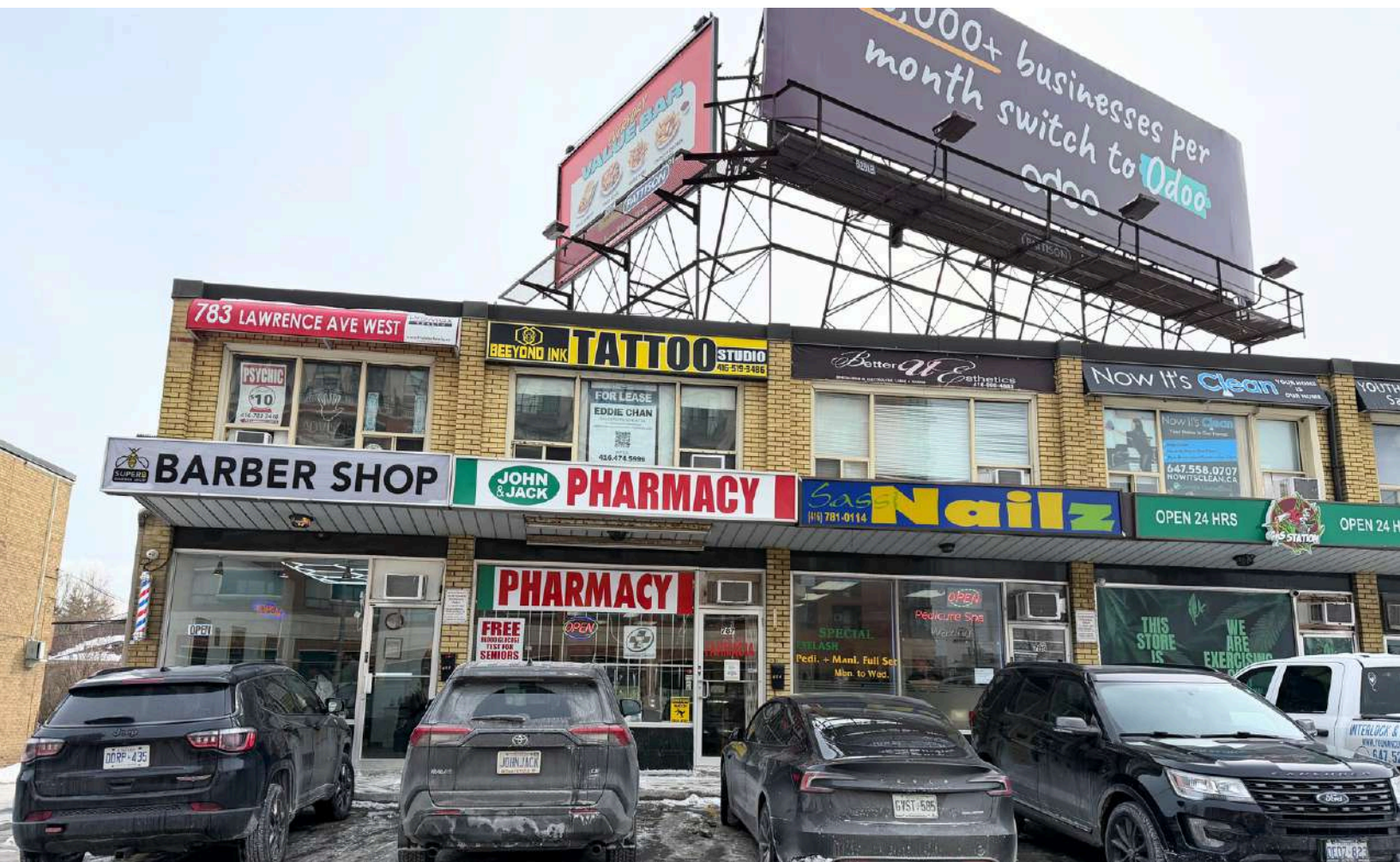


# FOR LEASE

Dufferin & Lawrence Ave W

783 Lawrence Avenue W



## PROPERTY SUMMARY

### Available Units:

Unit 12 – 400 sq ft | **\$1,600 Gross**

Unit 6 – **LEASED**

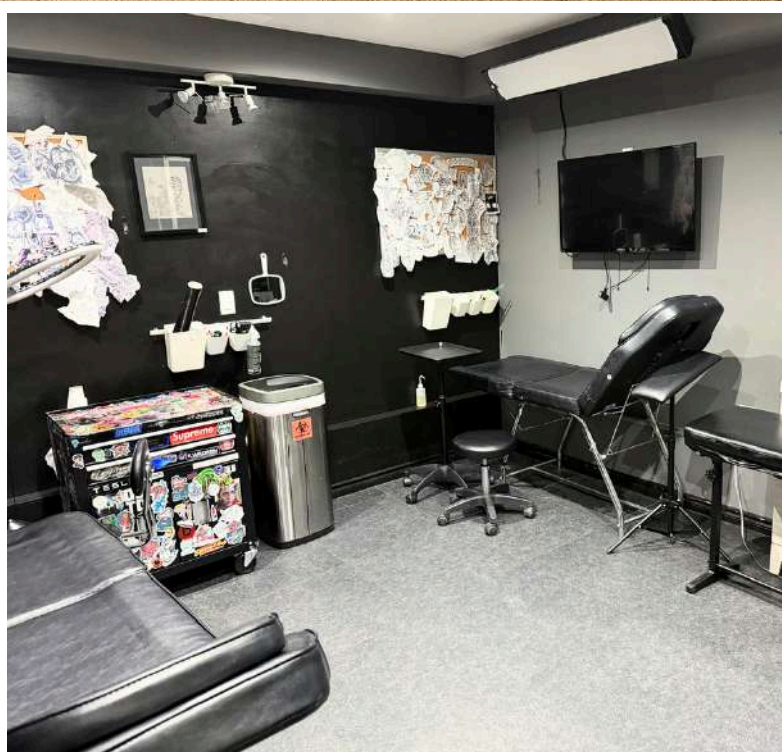
Unit 2 – 1,400 sq ft | **\$4,200 Gross**

### Highlights:

- Flexible office/retail space ideal for medical, professional, or service businesses
- Excellent exposure with strong pedestrian and vehicle traffic
- Convenient on-site parking for staff and clients
- Located steps from TTC transit routes
- Heating & CAM included in the gross rent
- Utilities extra

### Ideal For:

Office • Medical • Beauty • Tutoring • Consulting



# Eddie Chan Commercial Realtor

(647) 281- 6109    eddie@downtowntoronto-realestate.com

downtowntoronto-realestate.com

Area Realty Inc. Brokerage- 650 College St. Toronto, M6G 1B7 / (416) 474-5699



The information provided herein has been given to Area Realty by others and reliable sources. We do not warrant its accuracy. You are advised to independently verify the information prior to submitting an offer and to provide for sufficient due diligence in an offer. The information contained herein may change from time to time and the Property may be withdrawn from the market at anytime without notice. Not intended to solicit clients currently under contract