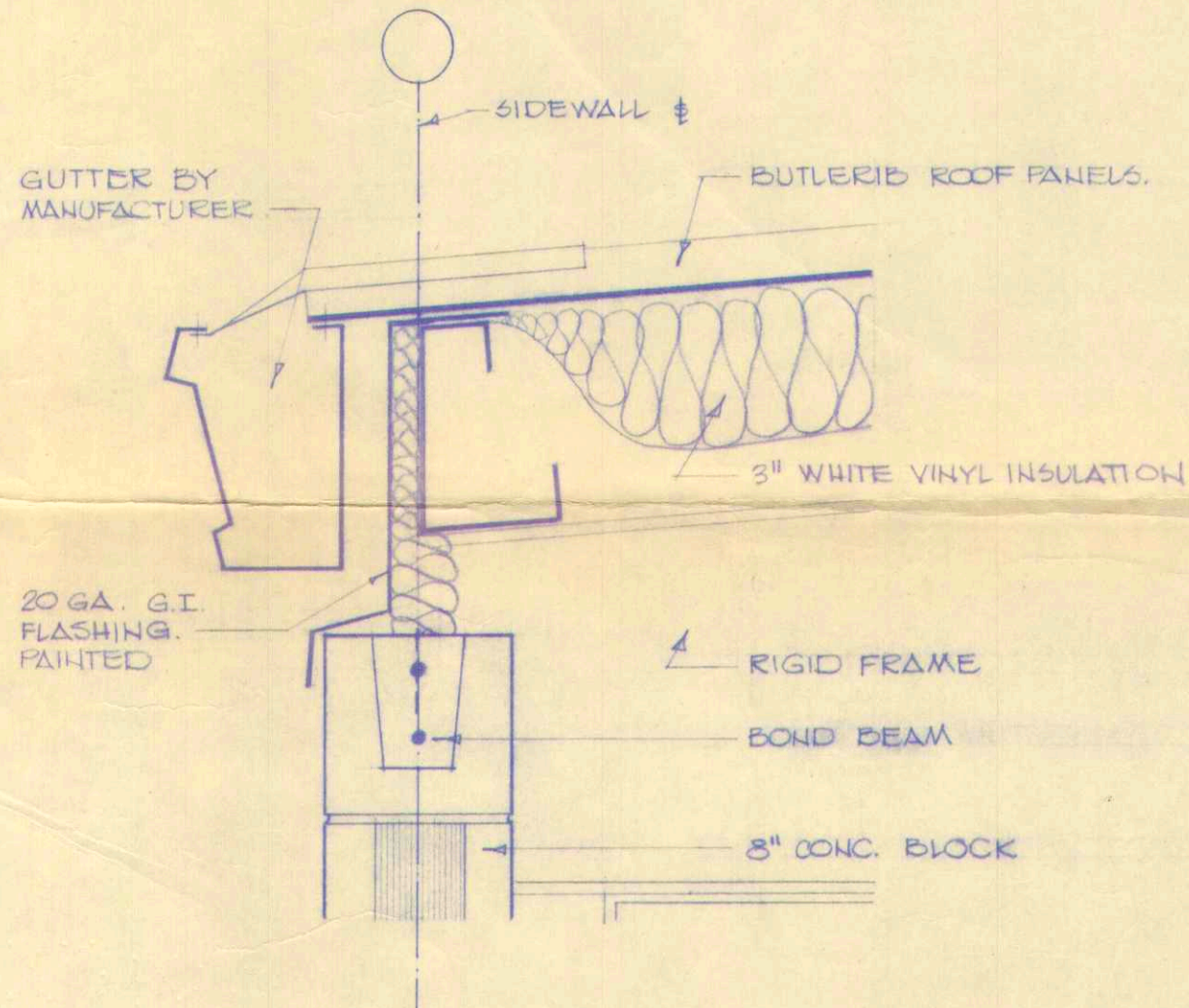


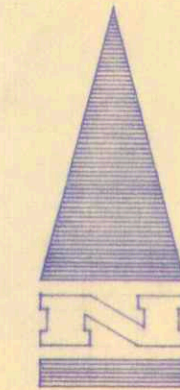
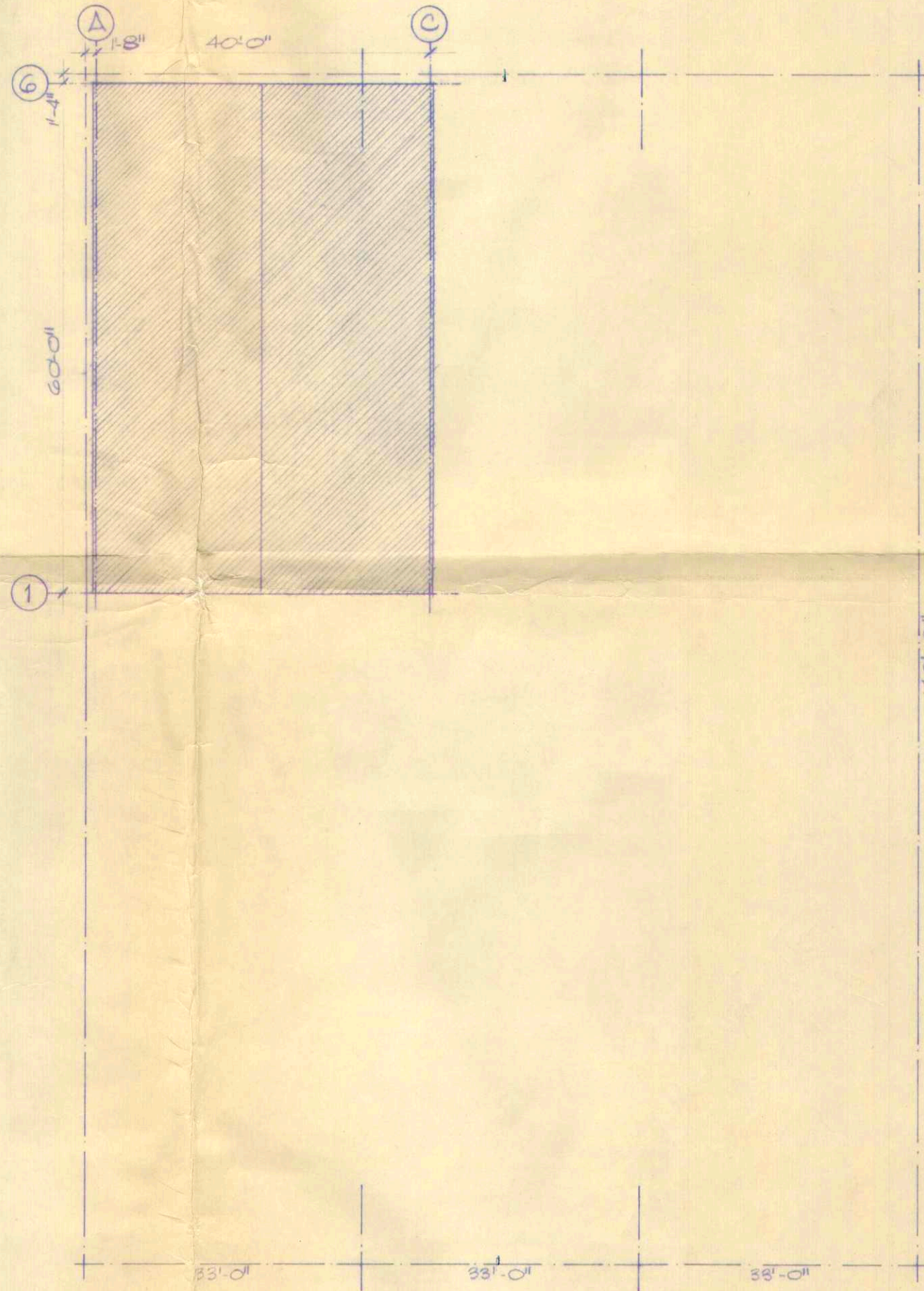
DETAIL
SCALE: 1/8 FULL SIZE



DETAIL
SCALE: 1/8 FULL SIZE



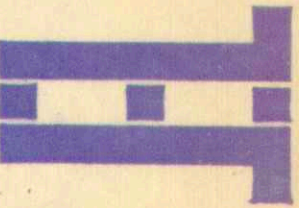
90TH AVENUE.



LEGAL DESCRIPTION
LOTS 6, 7, 8
BLOCK 12
PLAN G242 AX.

SITE PLAN
SCALE 1/16\"/>

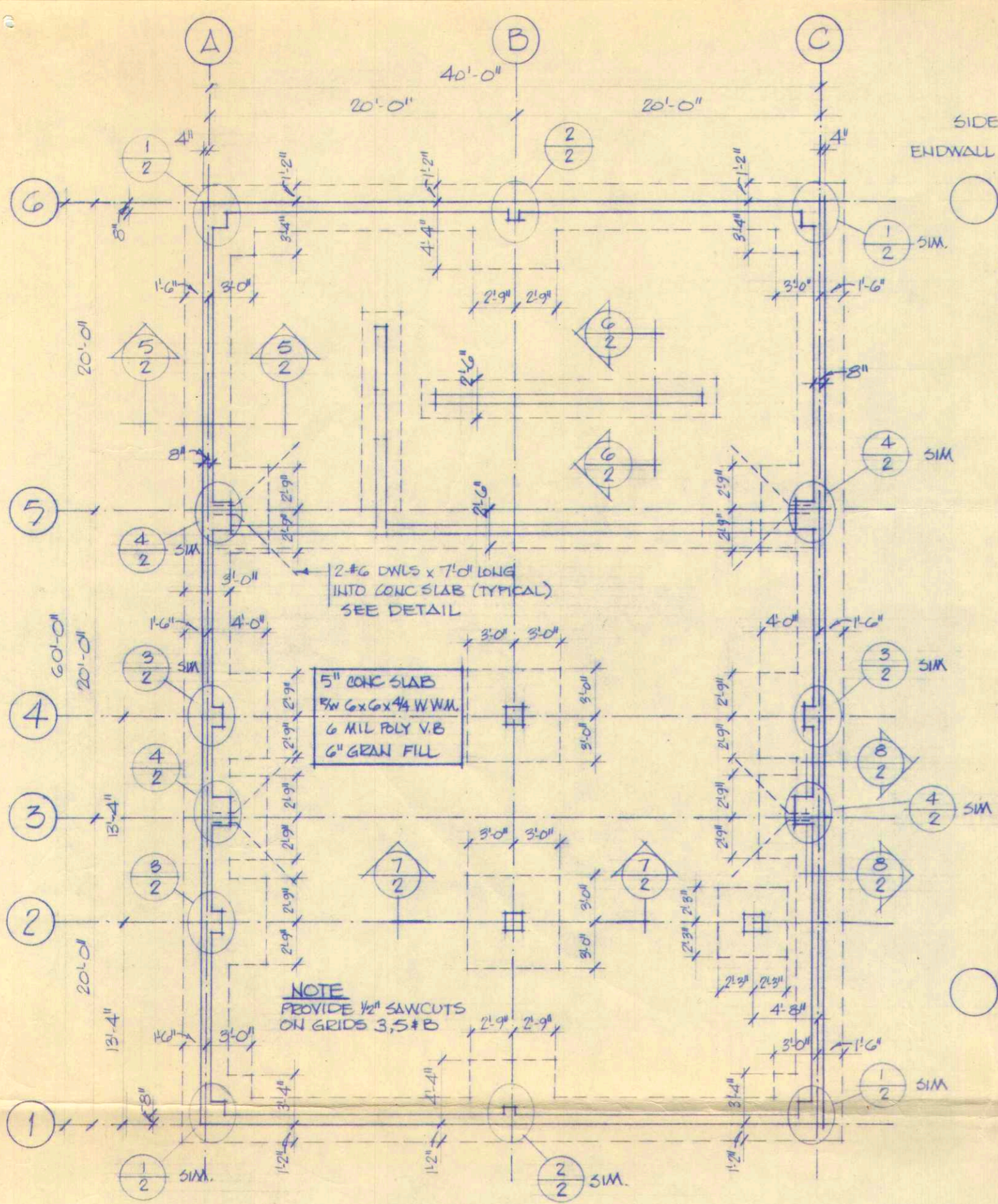
E. B. JACOBSEN
ENGINEERING LTD.
176 - 14315 - 116th AVENUE
EDMONTON, ALTA. T6L 4R6
TELEPHONE: 451-2540



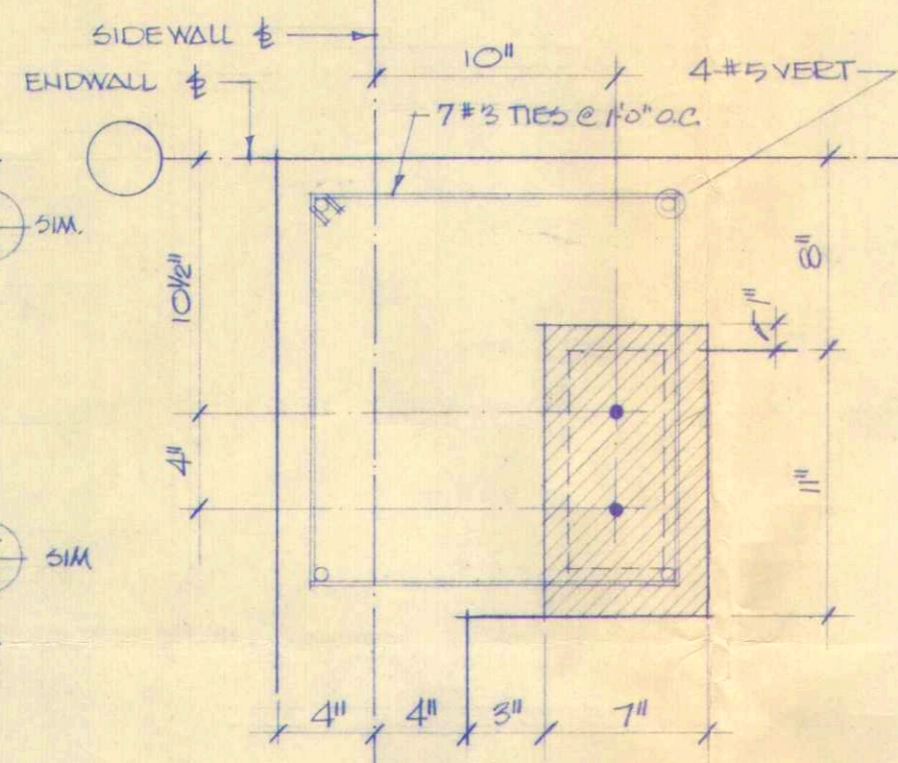
THE ASSOCIATION OF
PROFESSIONAL ENGINEERS
GEOLOGISTS AND GEOPHYSICISTS
OF ALBERTA
PERMIT NUMBER
P 2388
E. B. JACOBSEN
ENGINEERING LTD.

PROJECT NO.
D. 204.75
SCALE
AS NOTED
DATE
ISSUED FOR
CONSTRUCTION
MAY 15 1978

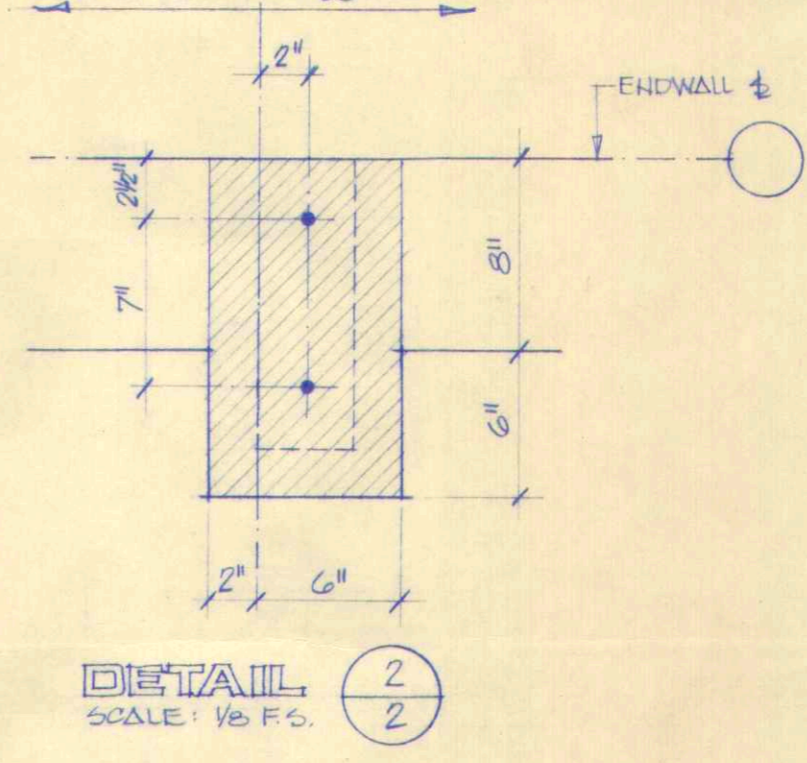
PROJECT
PEACE RIVER ELECTRIC
DRAWING
SITE PLAN
DETAILS



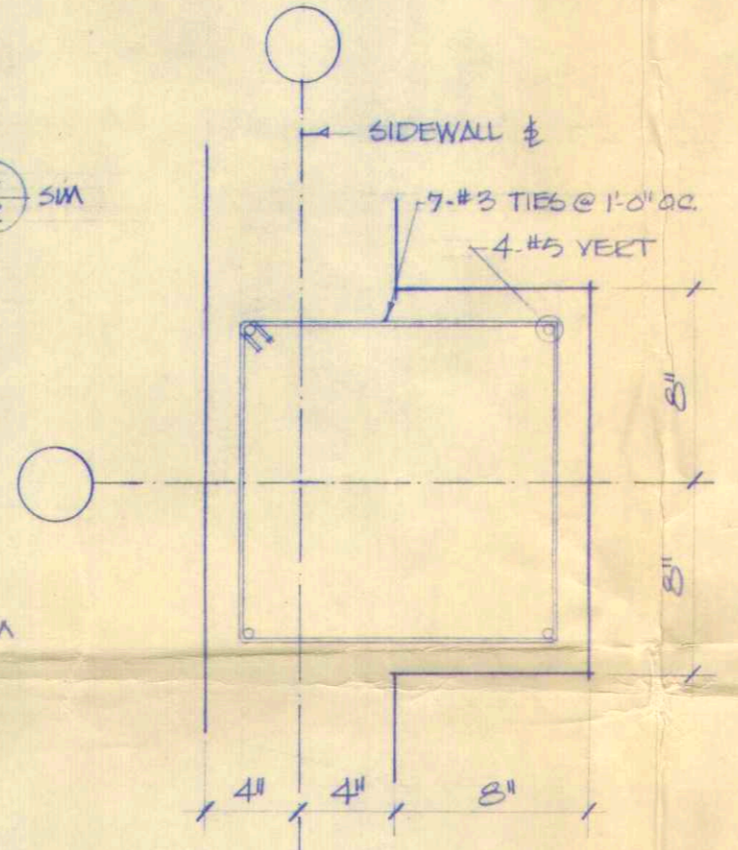
FOUNDATION PLAN
SCALE: 1/16" = 1'-0"



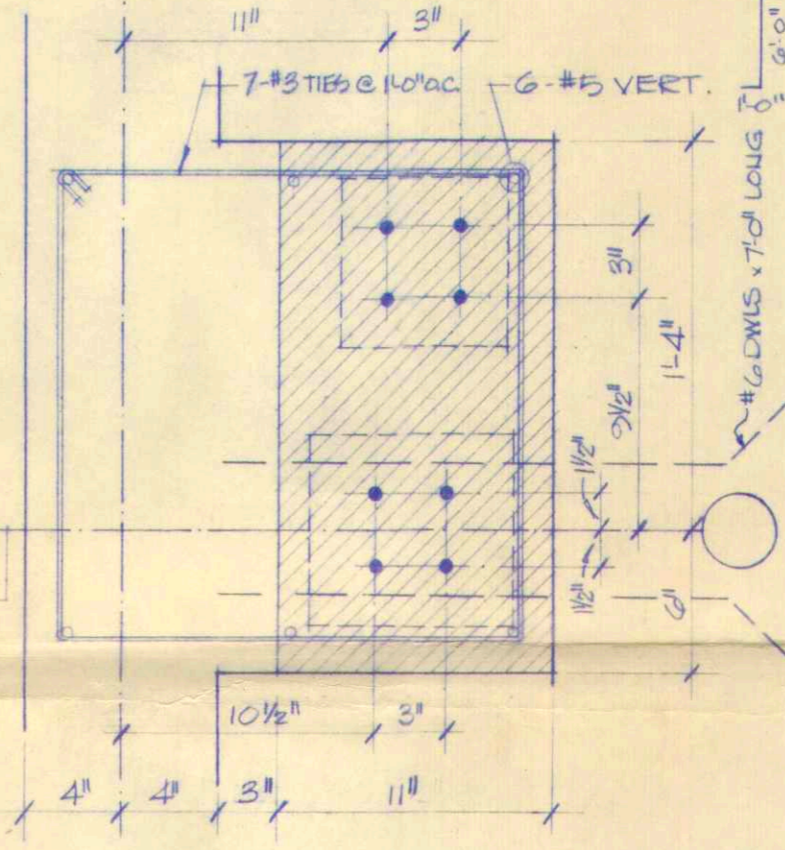
DETAIL 1
SCALE: 1/8" F.S.



DETAIL 2
SCALE: 1/8" F.S.



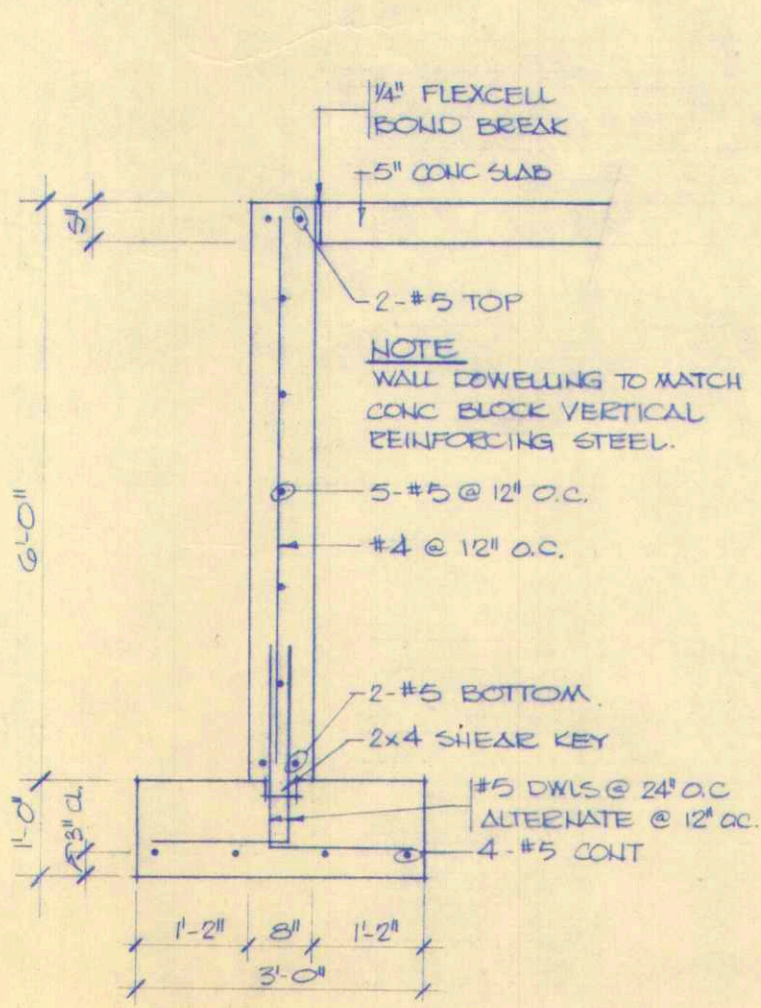
DETAIL 3
SCALE: 1/8" F.S.



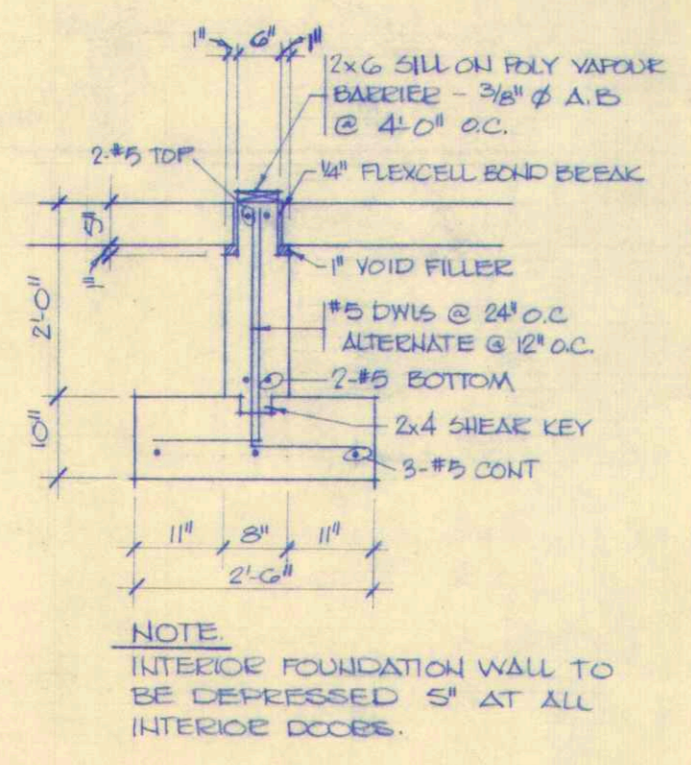
DETAIL 4
SCALE: 1/8" F.S.

GENERAL NOTES

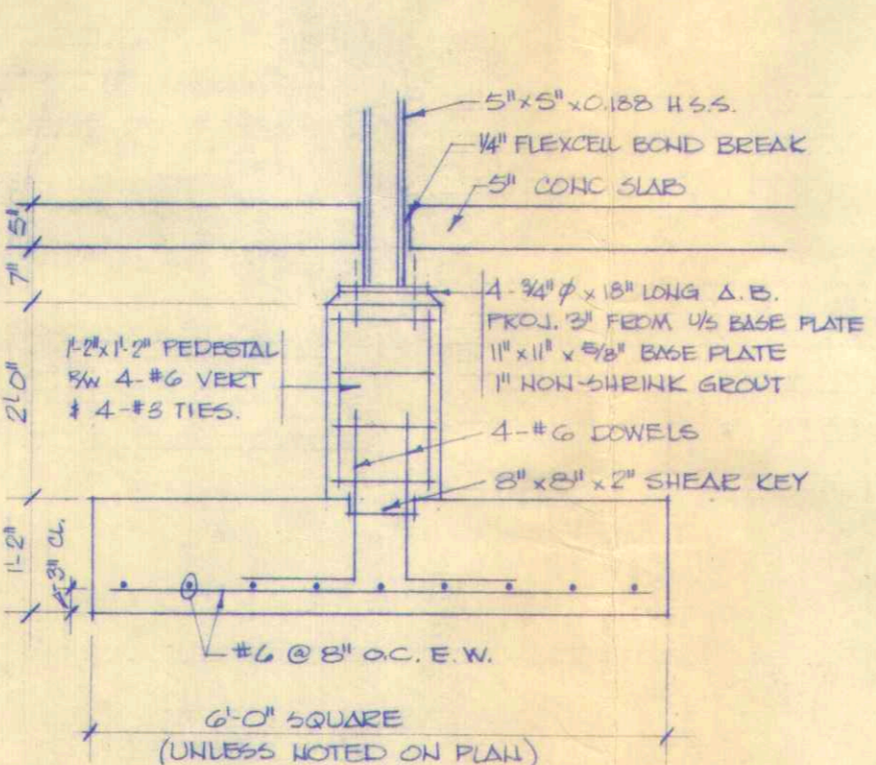
- For design purposes, allowable soil bearing capacities as per soil consultants' recommendations are as follows:
 - cont. strip footings 1.0 K/ft²
 - square spread footings 1.2 K/ft²
 Soil consultants' report and recommendations shall be considered part of this specification. Expected differential foundation settlement is 1".
- Concrete - normal cold weather placement procedures shall be followed when required.
 - compressive strength at 28 days 25 MPa
 - Type 10 Normal Portland Cement
 - Max. slump - slab 40 mm.
 - grade beams and pilasters 75 mm
 - Max. aggregate size 25 mm.
- Reinforcing Steel - to be deformed and conform to CSA G30.1 or G30.2 (F_y = 40 Ksi yield strength)
- Reinforcing Cover - formed surfaces 1" - cast against earth 3"
- Bent corner reinforcing bars to be placed at wall intersections matching horizontal reinforcing steel.
- Compaction under slab on grade 100% of Standard Proctor.
- Structural steel to conform to CSA G40.21, grade 44W.
- H.S.S. Steel to conform to CSA G40.20, class H (F_y = 50 Ksi)
- Anchor bolts:
 - structural steel connection - ASTM A325.
 - foundation base plates - to be 3/4" ∅ x 12" long with 2" projection from U/S base plate. Bolts to be ASTM A307.
- Reference elevation - top of concrete floor slab elev. 100'-0".



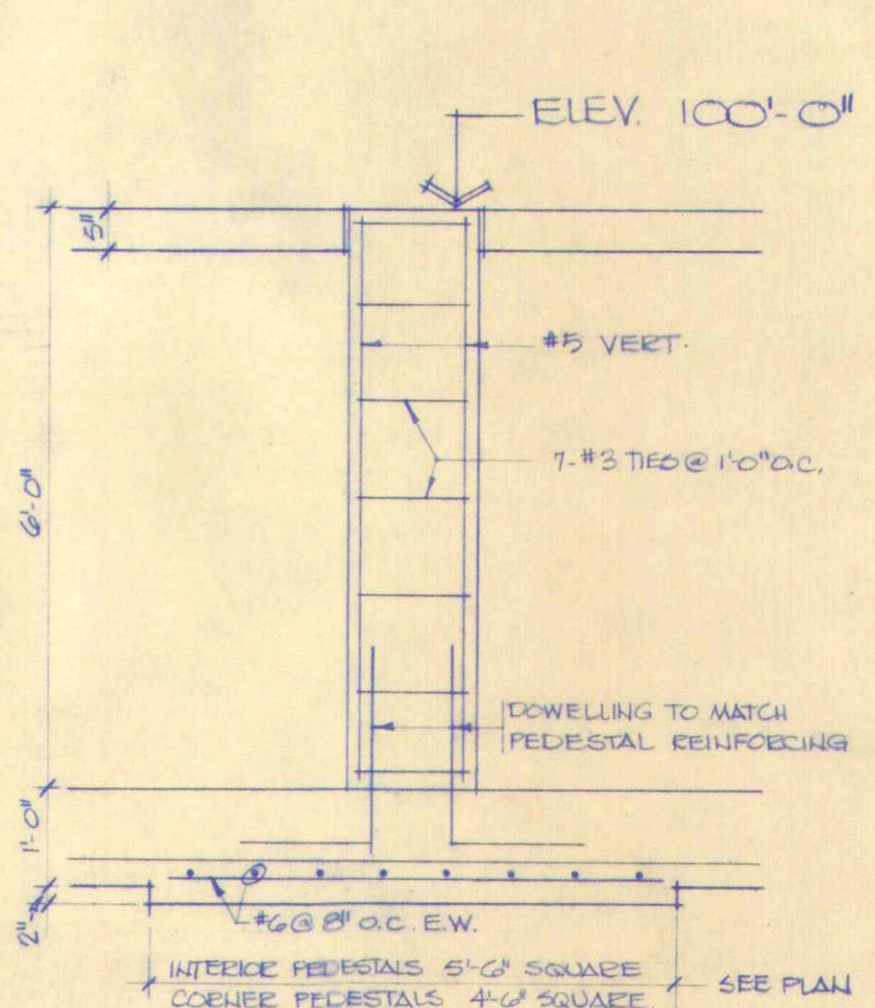
SECTION 5
SCALE: 1/2" = 1'-0"



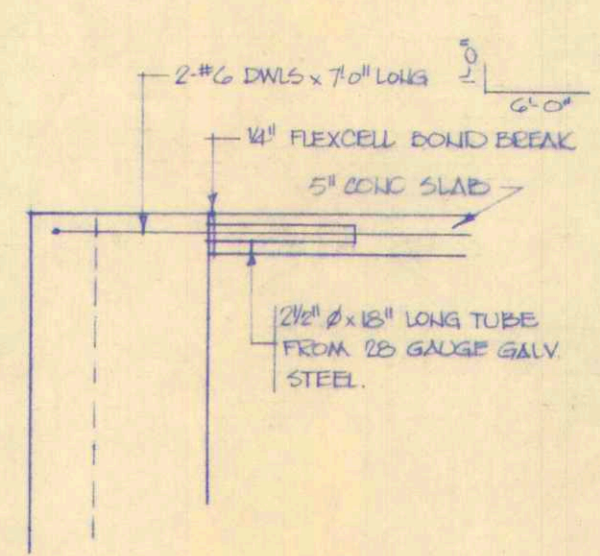
SECTION 6
SCALE: 1/2" = 1'-0"



SECTION 7
SCALE: 1/2" = 1'-0"



SECTION 8
SCALE: 1/2" = 1'-0"



DOWEL DETAIL AT RIGID FRAME PILASTER
SCALE: 1/2" = 1'-0"

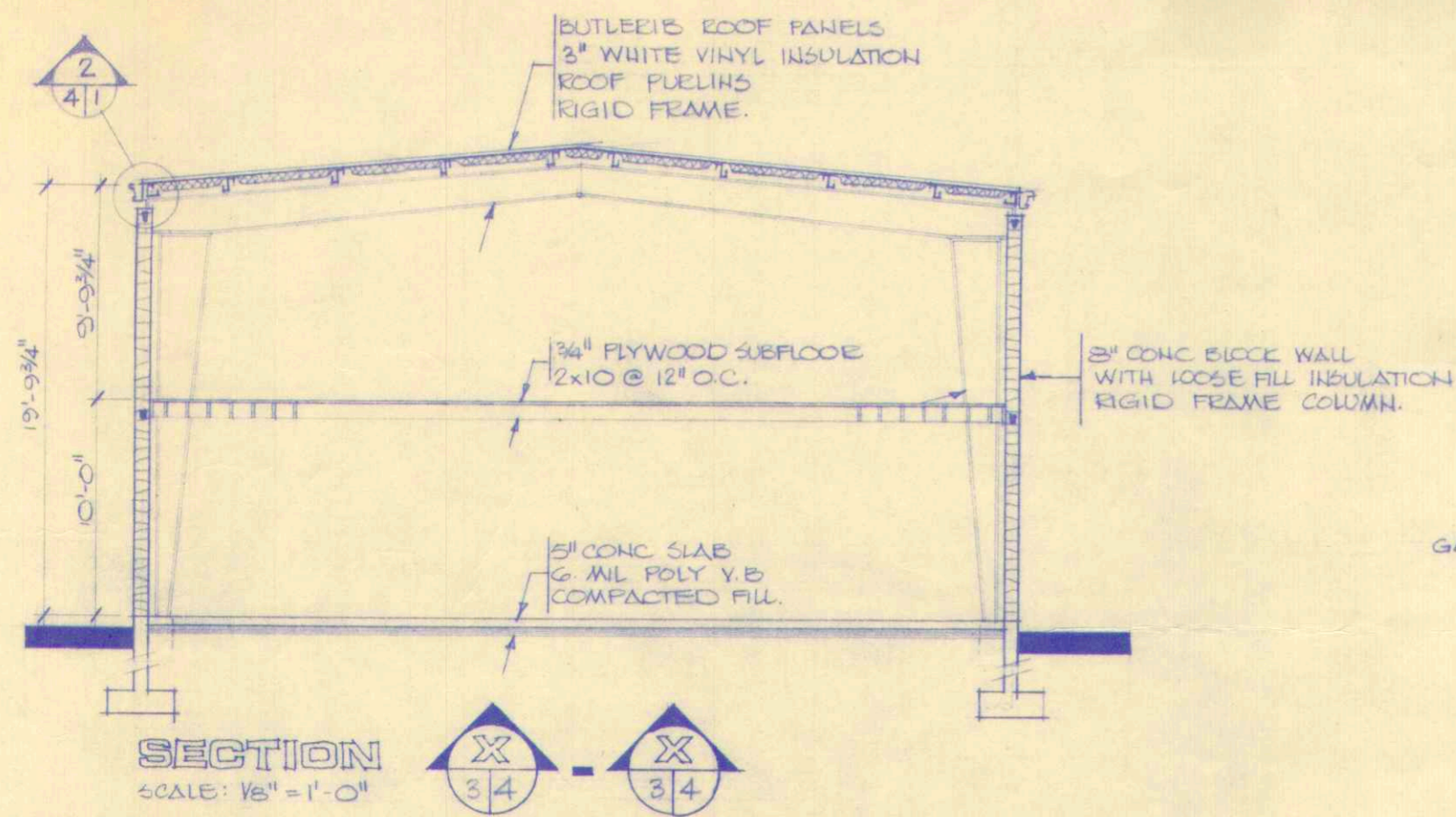
E. B. JACOBSEN ENGINEERING LTD.
176-14315-118th AVENUE
EDMONTON, ALTA. T6L 4R6
TELEPHONE: 461-2540



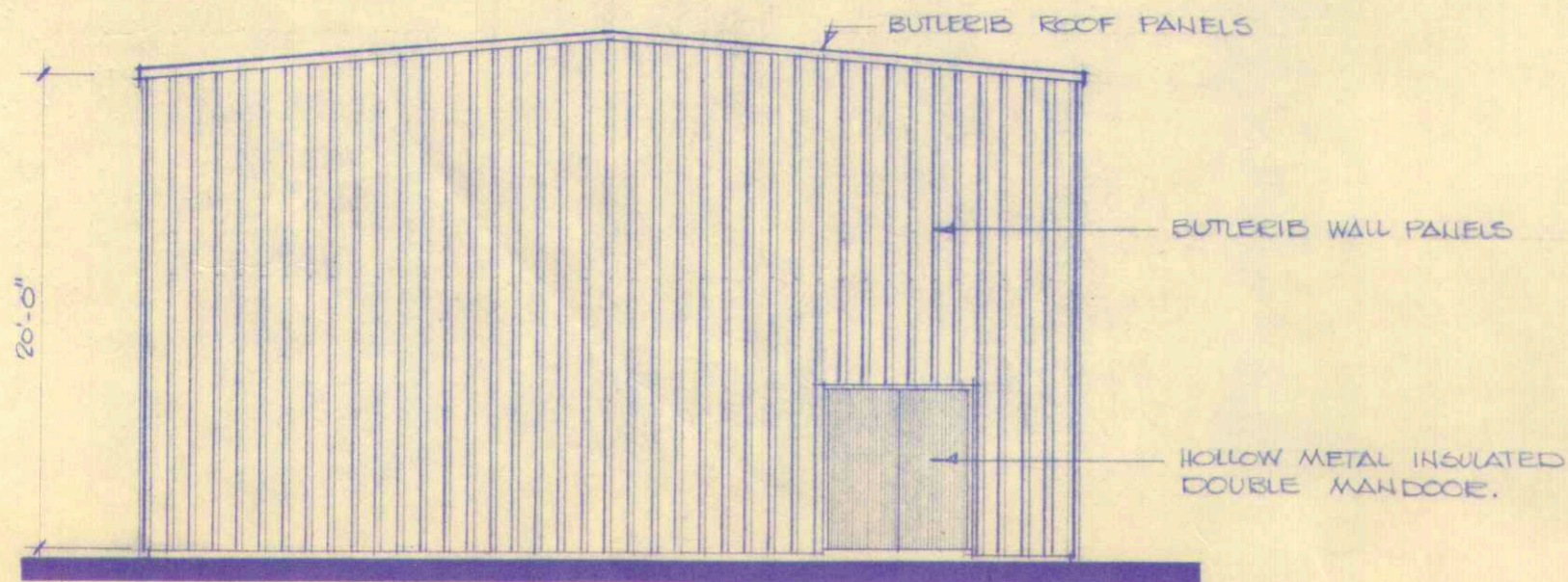
THE ASSOCIATION OF PROFESSIONAL ENGINEERS, GEOLOGISTS and GEOPHYSICISTS OF ALBERTA
PERMIT NUMBER P 2388
E. B. JACOBSEN ENGINEERING LTD.

PROJECT NO. D-204-78
SCALE AG NOTED
DATE ISSUED FOR CONSTRUCTION MAR 15 1978

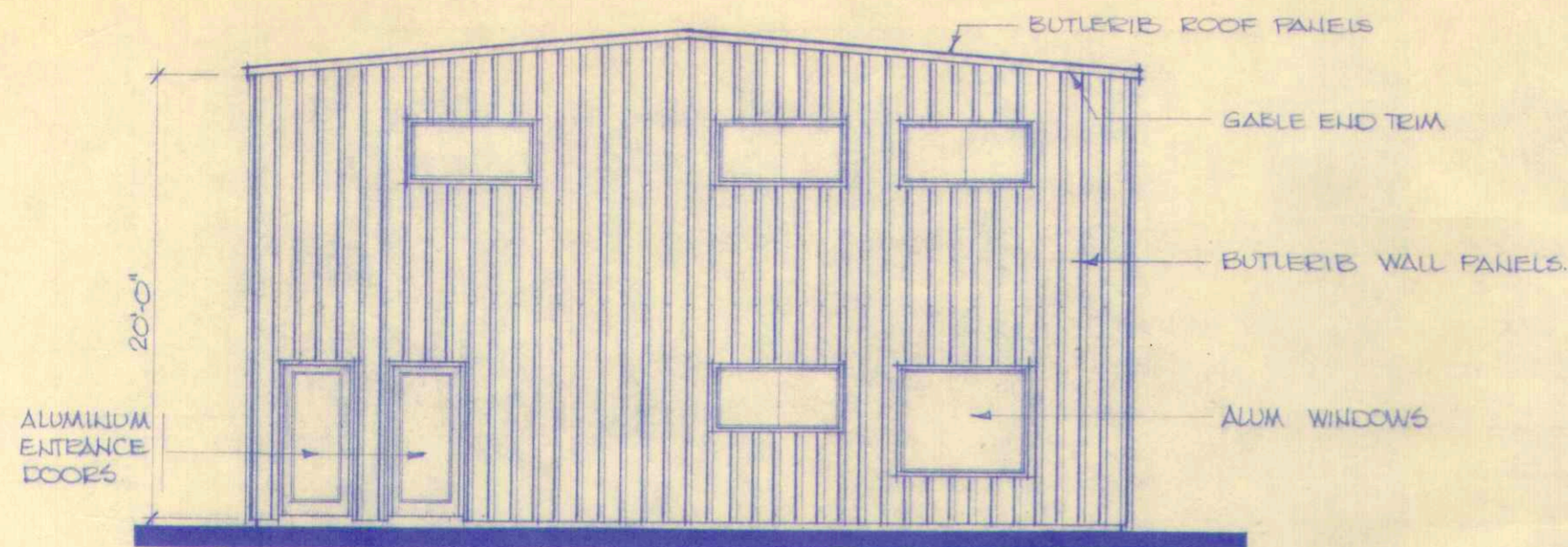
PROJECT PEACE RIVER ELECTRIC
DRAWING FOUNDATION DETAILS
SHEET NO. 2 OF 4



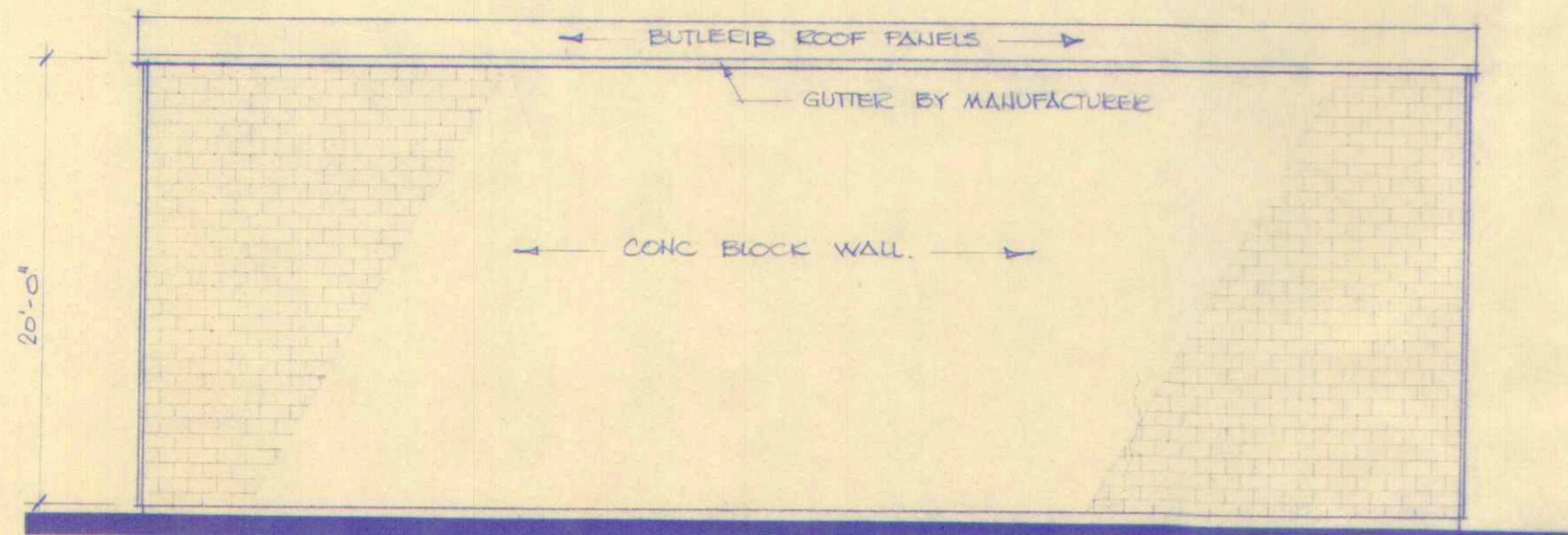
SECTION
SCALE: 1/8" = 1'-0"



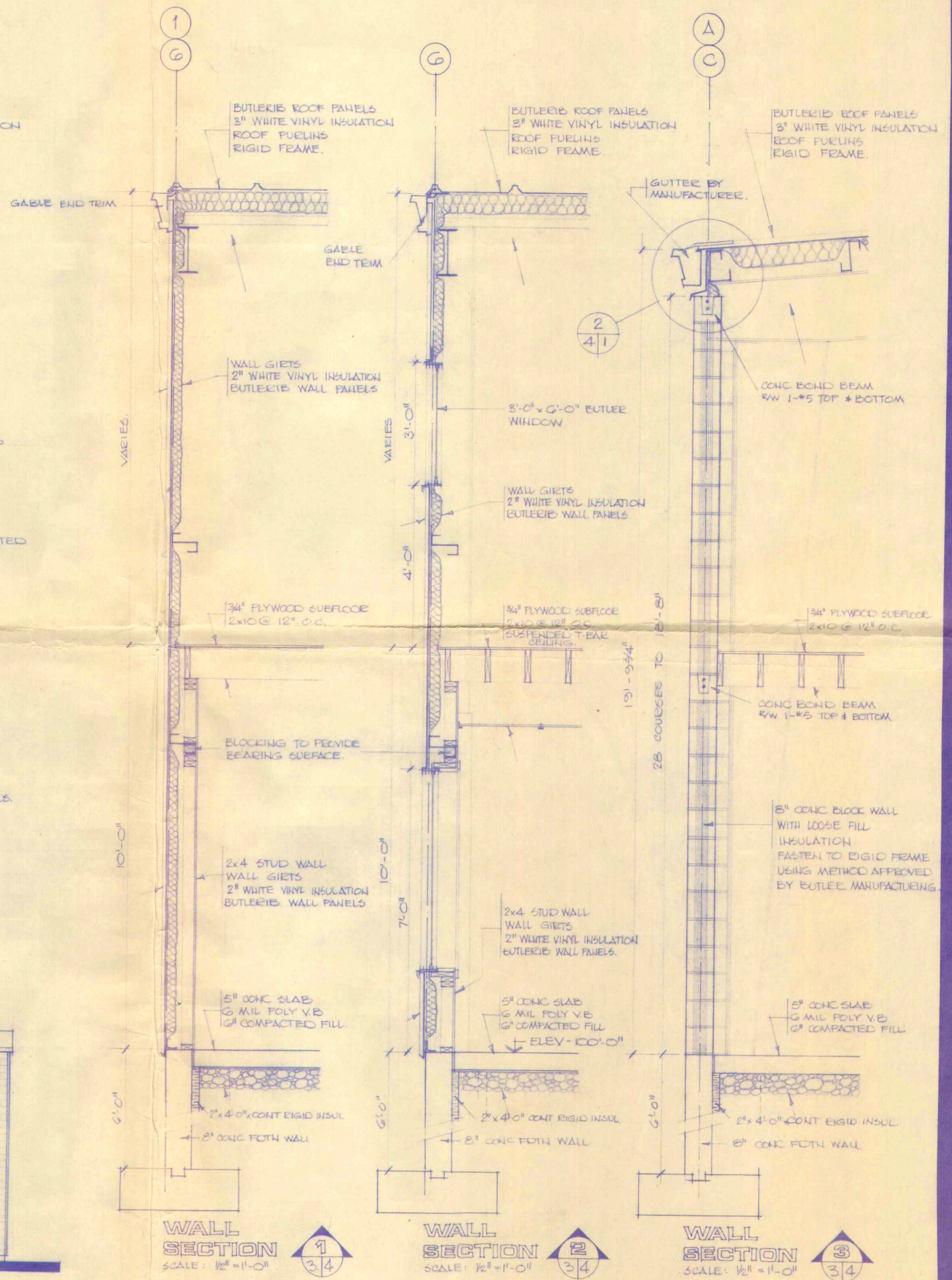
SOUTH ELEVATION
SCALE: 1/8" = 1'-0"



NORTH ELEVATION
SCALE: 1/8" = 1'-0"



EAST & WEST ELEVATION
SCALE: 1/8" = 1'-0"

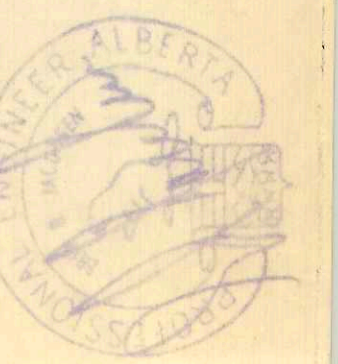
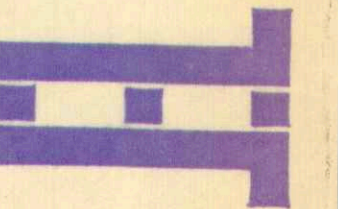


WALL SECTION 1
SCALE: 1/2" = 1'-0"

WALL SECTION 2
SCALE: 1/2" = 1'-0"

WALL SECTION 3
SCALE: 1/2" = 1'-0"

**E. B. JACOBSEN
ENGINEERING LTD.**
176-14315-118th AVENUE
EDMONTON, ALTA. T6L 4S6
TELEPHONE: 451-2540



THE ASSOCIATION OF
PROFESSIONAL ENGINEERS
GEOLOGISTS AND GEOPHYSICISTS
OF ALBERTA
PERMIT NUMBER
P 2388
E. B. JACOBSEN
ENGINEERING LTD.

PROJECT NO.
D. 204.7B
SCALE
AS NOTED
DATE
ISSUED FOR
CONSTRUCTION
MAY 15 1978

PROJECT
PEACE RIVER ELECTRIC
DRAWING
**ELEVATIONS & SECTION
WALL SECTIONS**

SHEET NO.
4 OF 4