

6238 Quinpool Road, Halifax



Highly Visible Retail Space



Immediately



2,100 SF



Ideal for Retail & Services



Property Overview

LOCATION

6238 Quinpool Road, Halifax

PROPERTY TYPE

Two Storey Commercial

UNIT SIZE

2,100 sq. ft.

AVAILABLE

Immediately

Quinpool Road, one of Halifax's most iconic commercial corridors, offers a dynamic blend of historic charm and modern vibrancy. Lined with boutique shops, restaurants, and services, it draws both local residents and visitors, ensuring steady foot traffic and strong community engagement. With easy transit access and ample parking, Quinpool Road is an ideal location for retail users seeking visibility, foot traffic, and a sense of community.



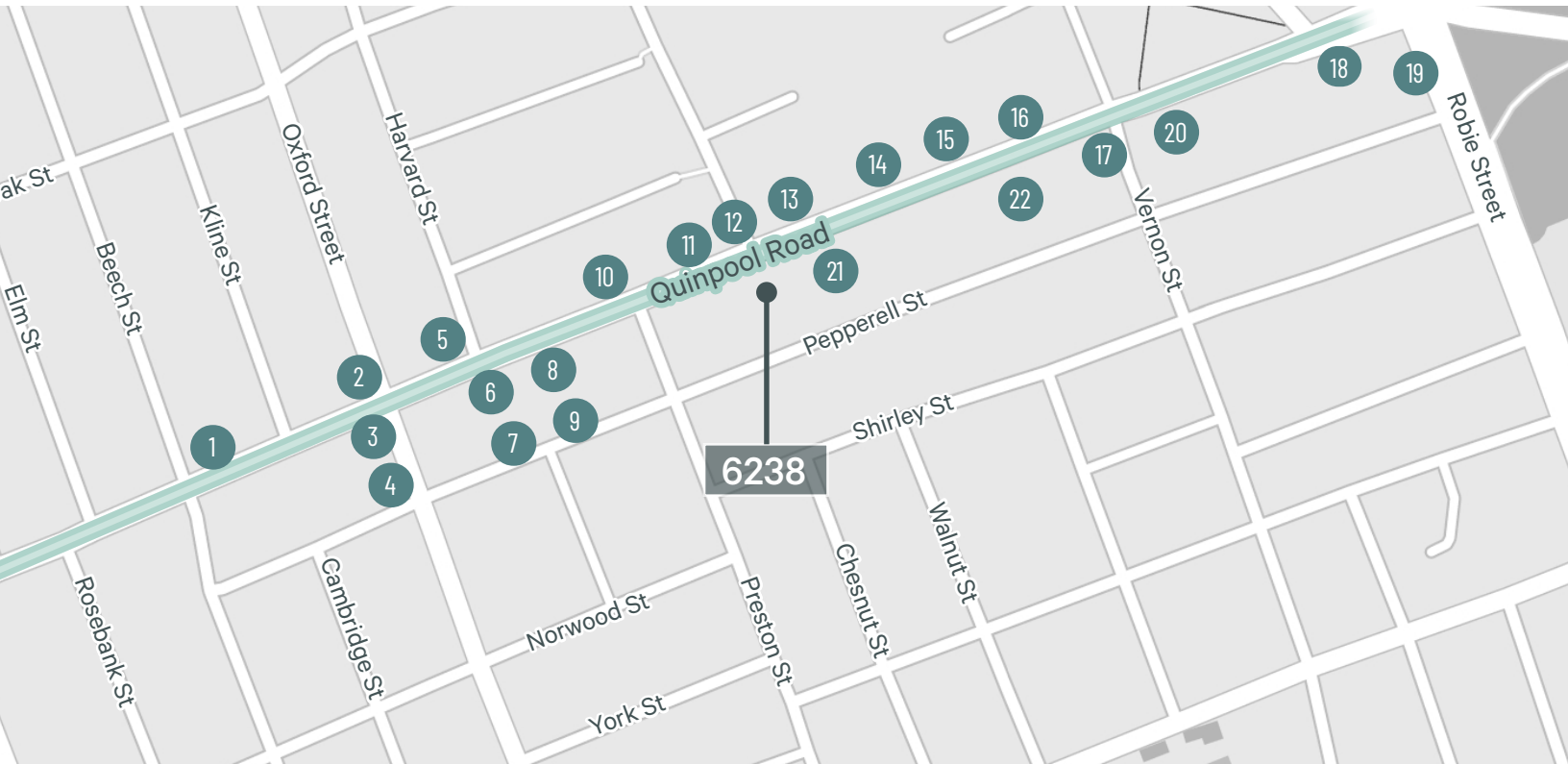
Ideal for retailers,
& services



Frontage on
Quinpool Road



Prime ground floor retail
with excellent visibility

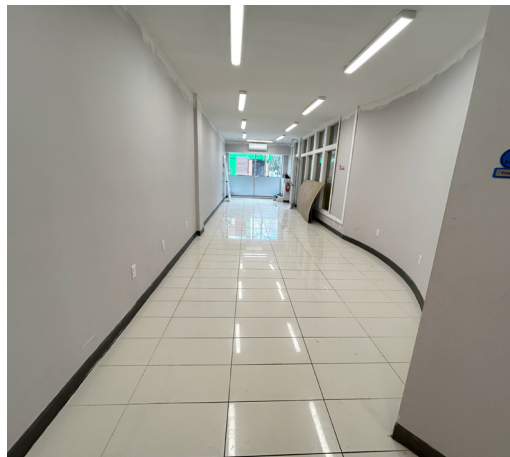
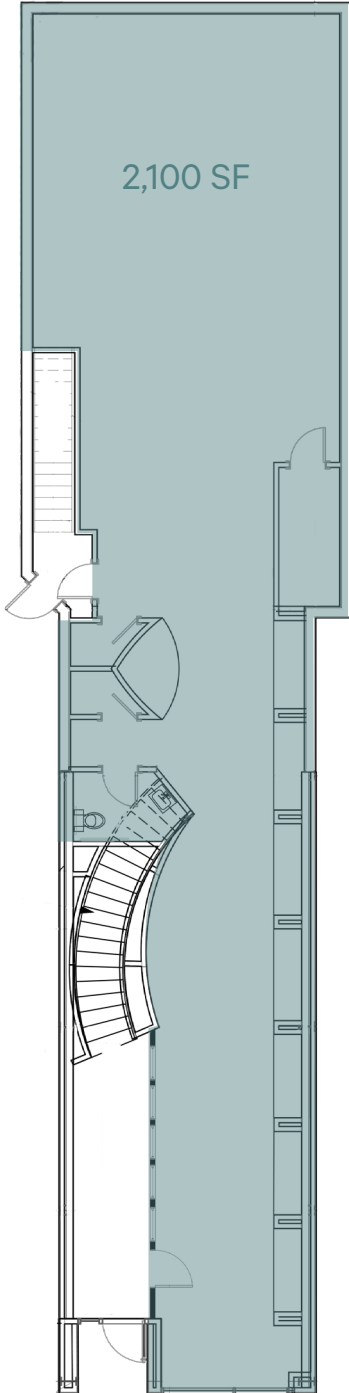


Prominent Retailers

- | | | | |
|-----------------------|-----------------------|-------------------------|---------------------|
| 1. Tim Hortons | 7. McDonald's | 13. Canadian Tire | 19. Atlantica hotel |
| 2. Wasabi House | 8. Pizza Hut | 14. Wendy's | 20. Dilly Dally |
| 3. East Peak Climbing | 9. KFC | 15. NSLC | 21. Blue Olive |
| 4. Oxford Taproom | 10. Quinn's Arms | 16. Superstore | 22. Move East |
| 5. Petro Canada | 11. East Coast Bakery | 17. The Trail Shop | |
| 6. Fitness FX | 12. TD | 18. The Cheeky Neighbor | |

The Opportunity

High profile ground floor commercial space on Quinpool Road





6238 Quinpool Road, Halifax

For more information, please contact:

Mat Houston
 Vice President
 T 902 492 2074
mathew.houston@cbre.com

Breanna MacRury
 Sales Brokerage Associate
 T 902 492 2082
breanna.macrury@cbre.com

This disclaimer shall apply to CBRE Limited, Real Estate Brokerage, and to all other divisions of the Corporation; to include all employees and independent contractors ("CBRE"). All references to CBRE Limited herein shall be deemed to include CBRE, Inc. The information set out herein, including, without limitation, any projections, images, opinions, assumptions and estimates obtained from third parties (the "Information") has not been verified by CBRE, and CBRE does not represent, warrant or guarantee the accuracy, correctness and completeness of the Information. CBRE does not accept or assume any responsibility or liability, direct or consequential, for the Information or the recipient's reliance upon the Information. The recipient of the Information should take such steps as the recipient may deem necessary to verify the Information prior to placing any reliance upon the Information. The Information may change and any property described in the Information may be withdrawn from the market at any time without notice or obligation to the recipient from CBRE. CBRE and the CBRE logo are the service marks of CBRE Limited and/or its affiliated or related companies in other countries. All other marks displayed on this document are the property of their respective owners. All Rights Reserved.