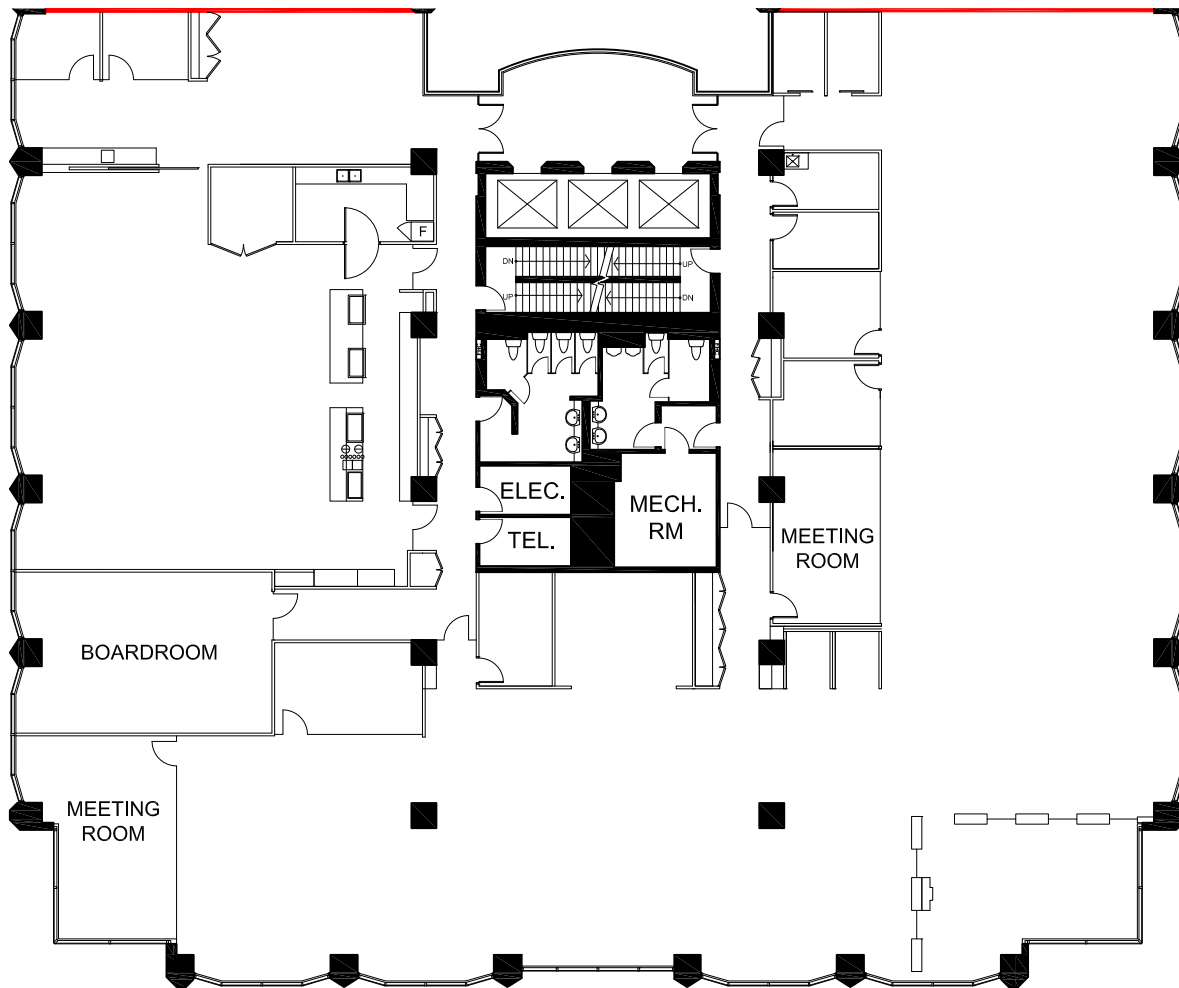


KEY PLAN



 DEMISING WALL

0 10 50 FT.

SUITE 401

RENTABLE AREA = 16,745 SF

ABOVE INFORMATION ESTABLISHED ACCORDING
TO ANSI / BOMA Z65.1 1996

May 09, 2023

© 2023 Space Database Inc. All Rights Reserved



901 King St West
Toronto, Ontario
Suite 401

