

# FOR LEASE

## West Surrey Industrial Centre

Unit 25, 8268 128 Street, Surrey, BC



Open 3,350 sq. ft. warehouse with 2 washrooms, front loading on 128th Street. Could work well for recreational use or warehousing. Contact Hertha and Leslie for more info.



DIRECTOR OF REAL ESTATE  
**Leslie Koole**



PROPERTY MANAGER & LEASING AGENT  
**Hertha Muller**

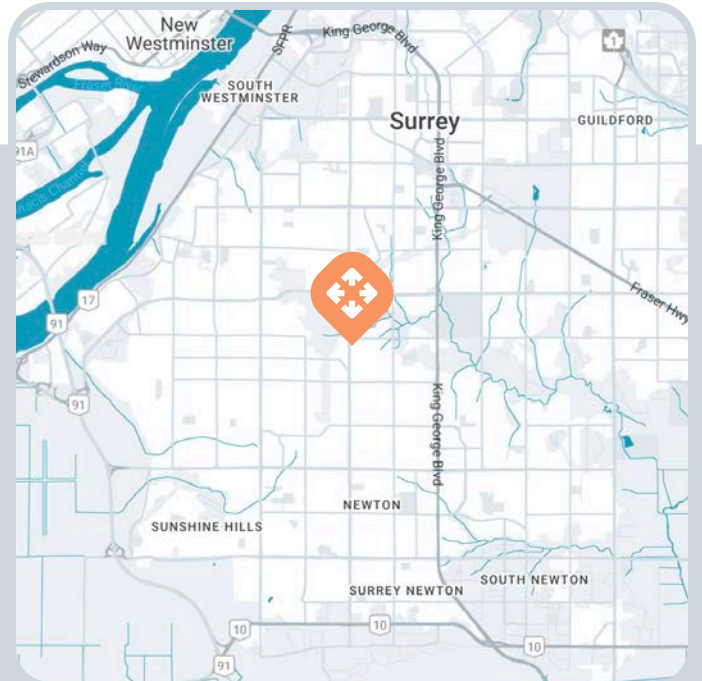
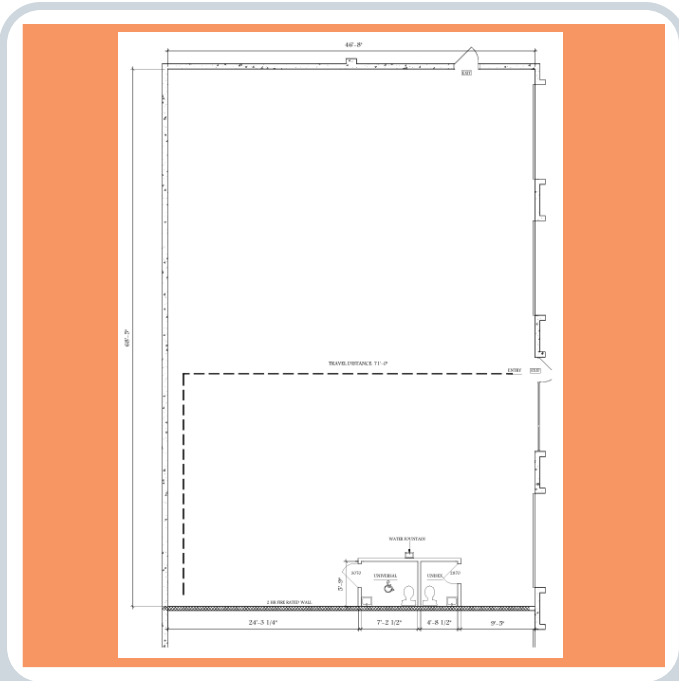


**604.533.1138**  
**leasing@benchmark-group.com**

Contact our leasing team and let's get you the commercial property experience you deserve.

# West Surrey Industrial Centre

Unit 25, 8268 128 Street, Surrey, BC



## Unit Size

Warehouse - 3,350 sq. ft.

## Amenities

- Block construction
- Showroom/office
- Grade level overhead doors
- Open plan warehouse
- 3 phase power
- Overhead heaters in warehouse
- Ample on-site parking
- Excellent property management service by Landlord

## Lease Rates

Warehouse - \$22.00 psf  
Operating Expenses - \$7.15 psf + 5% PM Fee

## Zoning

CD – Comprehensive Development Zone

## Location

With showroom frontage on 128th Street, this Newton industrial complex is in the heart of Surrey. Nestled between 80th & 84th Avenues, it is surrounded by a mixture of retail and industrial properties and would make an excellent location for your business.

## TAKE YOUR PLACE OF BUSINESS TO THE NEXT LEVEL

Contact our leasing team and let's get you the commercial property experience you deserve.

**604.533.1138**  
**[leasing@benchmark-group.com](mailto:leasing@benchmark-group.com)**