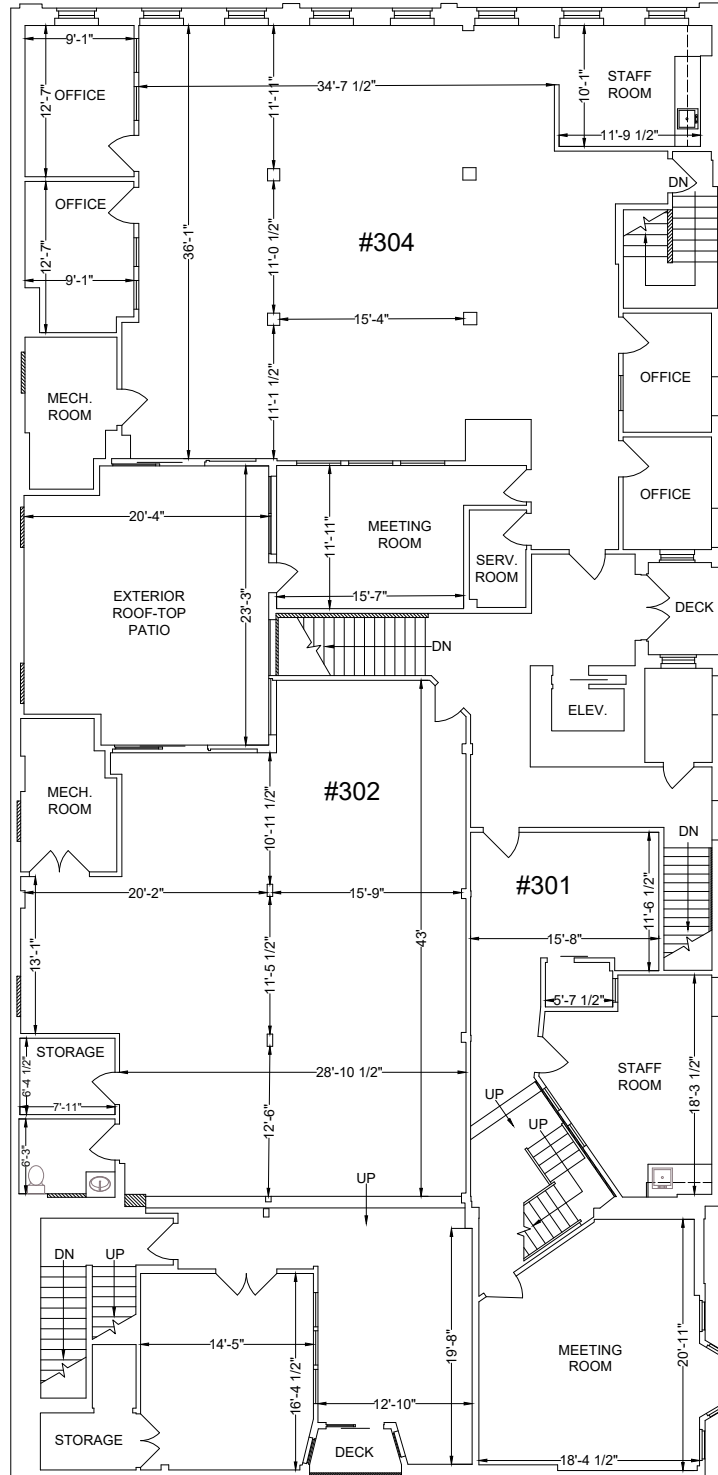



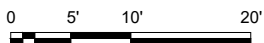
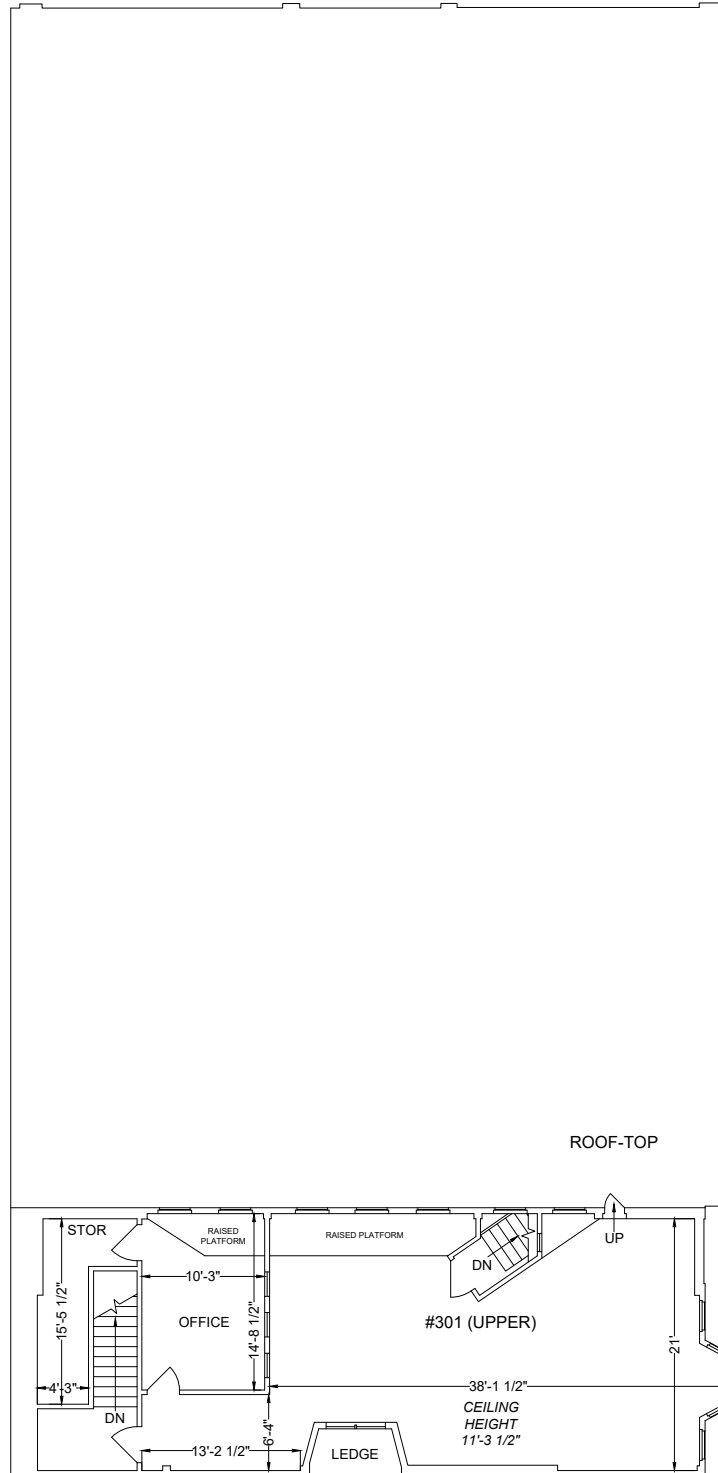
3RD FLOOR
 733 JOHNSON ST
 VICTORIA BC




MEASURED MAY 2019

PERMA CONSTRUCTION LTD. 309 MARY STREET VICTORIA BC V9A 3V8 250-384-2323	3RD FLOOR 733 JOHNSON ST VICTORIA BC	FLOOR PLAN 19-2572	18 JUN 2019 1/16" = 1'0"	 MEASURE MASTERS VANCOUVER ISLAND - COMMERCIAL 604 433 5646 MMVIC.CA
--	--	---------------------------	---------------------------------	--

#301A
 UPPER 3RD
 733 JOHNSON ST
 VICTORIA BC



MEASURED MAY 2019

PERMA CONSTRUCTION LTD. 309 MARY STREET VICTORIA BC V9A 3V8 250-384-2323	#301A UPPER 3RD 733 JOHNSON ST VICTORIA BC	FLOOR PLAN 19-2572	18 JUN 2019 1/16" = 1'0"	 MEASURE MASTERS VANCOUVER ISLAND - COMMERCIAL 604 433 5646 MMVIC.CA
--	---	---------------------------	---------------------------------	--