 **JLL** SEE A BRIGHTER WAY

For Sublease

1981 Main Street
Vancouver, BC

THE LOCATION

Situated just off the intersection of Main Street and East 4th Avenue, this property is in the heart of Vancouver's vibrant Mount Pleasant neighborhood. Just minutes from the Main Street-Science World SkyTrain and upcoming Main Street-Broadway SkyTrain, this area provides excellent connectivity to Downtown and surrounding areas, with an abundance of nearby amenities within walking distance.

SALIENT DETAILS



SIZE
2,352 s.f.



AVAILABILITY
90-120 days notice



SUBLEASE TERM
May 30, 2027



BASIC RENT
Contact listing agents



ADDITIONAL RENT
\$17.45 psf/pa (2025)



PARKING
5 surface level stalls



FURNITURE
Potentially available



SIGNAGE OPPORTUNITY
Directly on Main Street

THE SUITE

22 workstations

7 person boardroom with additional space for four

1 kitchenette

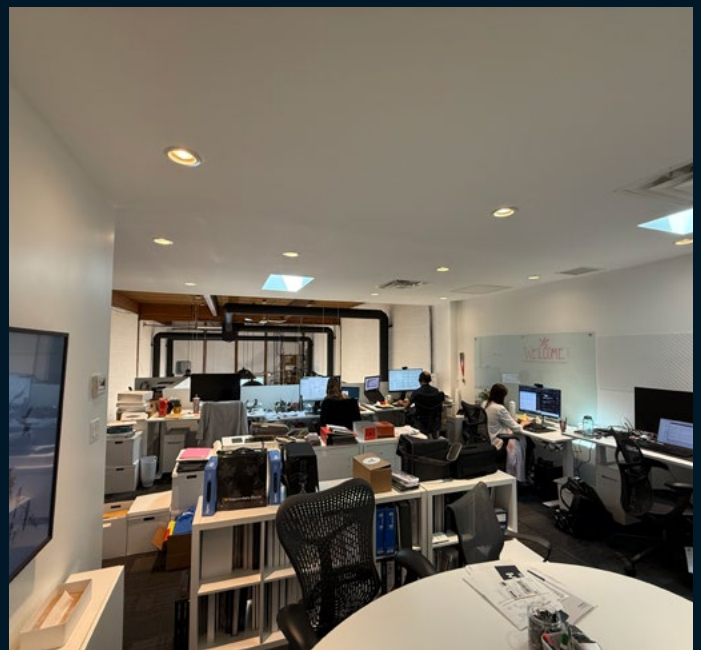
1 copy area

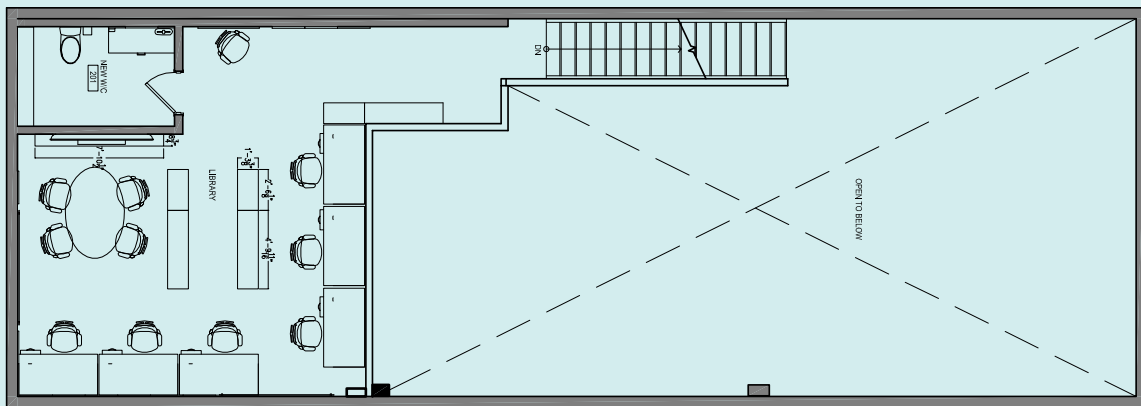
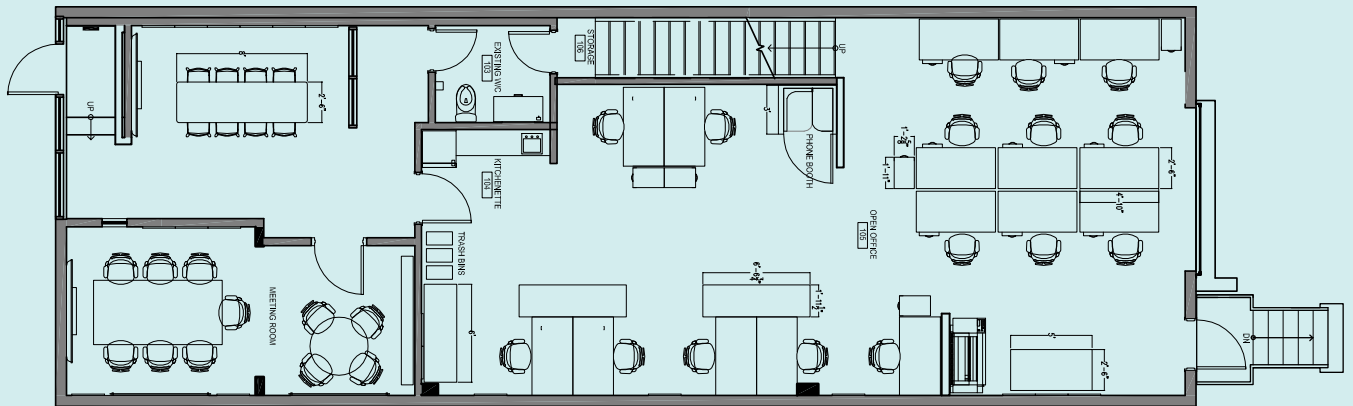
8 person open meeting space

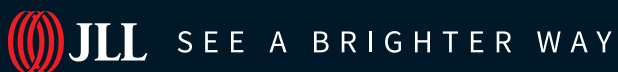
4 person open meeting space

2 private washrooms

1 outdoor patio







Gavin Reynolds*

Executive Vice President
gavin.reynolds@jll.com
+1 604 998 6015

Graham Hyslop

Associate
graham.hyslop@jll.com
+1 604 354 7284

Although information has been obtained from sources deemed reliable, neither Owner nor JLL makes any guarantees, warranties or representations, express or implied, as to the completeness or accuracy as to the information contained herein. Any projections, opinions, assumptions or estimates used are for example only. There may be differences between projected and actual results, and those differences may be material. The Property may be withdrawn without notice. Neither Owner nor JLL accepts any liability for any loss or damage suffered by any party resulting from reliance on this information. If the recipient of this information has signed a confidentiality agreement regarding this matter, this information is subject to the terms of that agreement.