

PRIME OFFICE SPACE FOR LEASE

Purdy's Wharf Tower II Suite 1500

Suite View



Purdy's Wharf Tower II
1969 Upper Water St.
Halifax Canada B3J 3R7

TECHNICAL INFORMATION

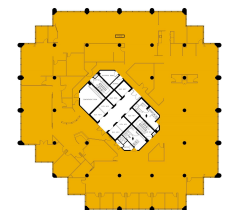
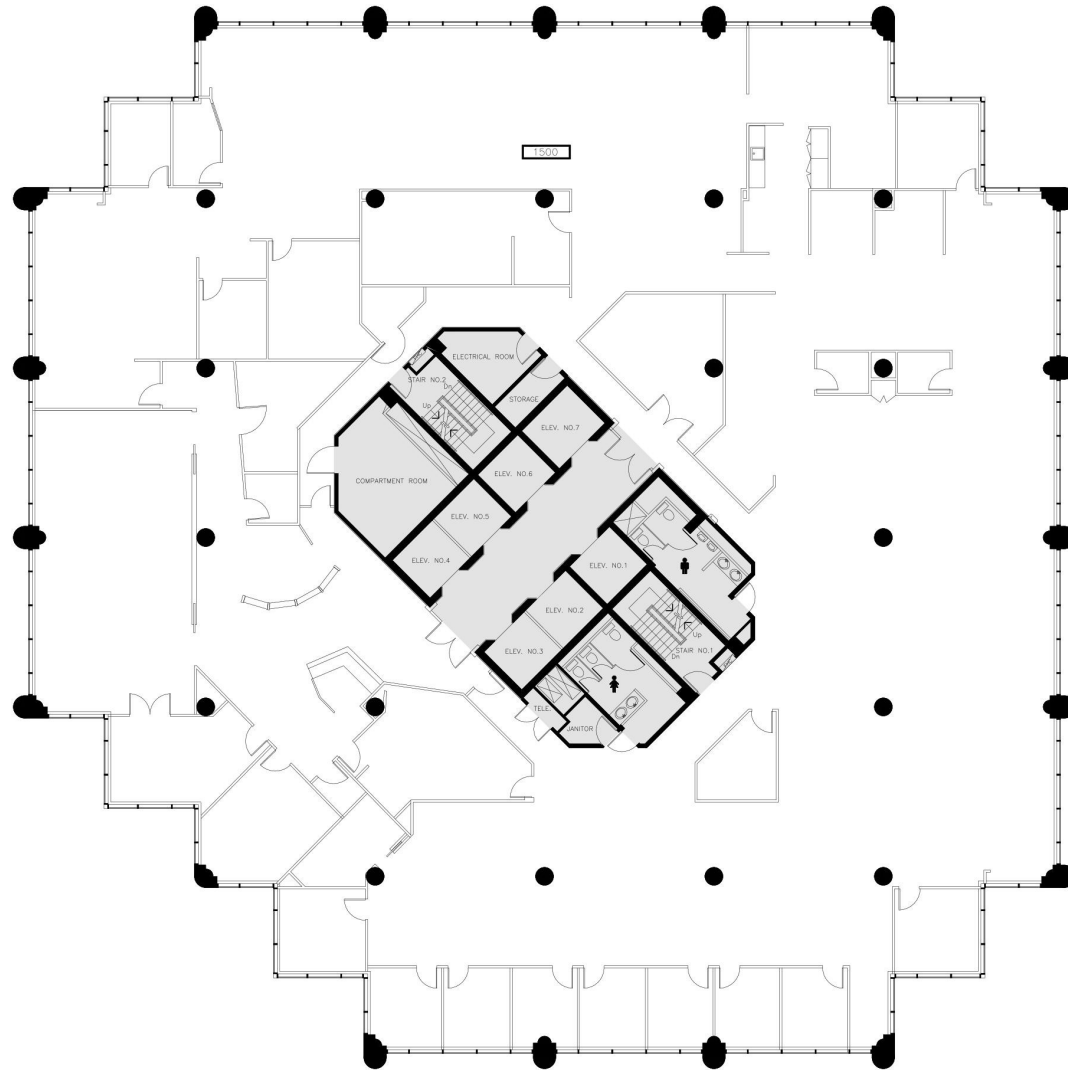
SUITE: 15th floor, Suite 1500
RENTABLE AREA: 19,242 sq.ft.

BUILDING DESCRIPTION

Purdy's Wharf Tower Two is a 22-storey Class "AAA" office building that is the prominent business address in Halifax. It is attractively located on the Waterfront and is connected to the Pedway system in Halifax's Central Business District. The building features a striking coloured glass and concrete exterior and the complex dominates the Halifax skyline.

CONTACT INFORMATION

GWL Realty Advisors Inc
(902) 421-1122
pwoneserve@gwra.com



KEY PLAN