



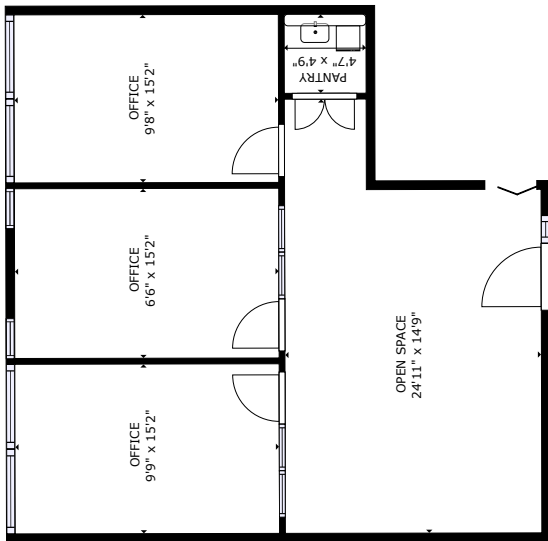
BGO
Properties



SUITE 315
1100 MELVILLE STREET

Suite 315

951sf



Quick Facts

LOCATION	1100 Melville Street
INFORMATION	East side with elevator exposure. 3 perimeter offices, kitchennette and open areas.
OPERATING COSTS	\$20.87 per sq ft (2026 estimate)
TERM	Negotiable
AVAILABLE	Immediately
AMENITIES	Fitness Facility with Showers Bike Storage Visitor and Tenant Parking Areas One (1) Block away from Burrard Skytrain Station Restaurant and Cafe on ground level Convenience store in lobby On site Building Operator ClikFix Tenant Service Centre
VIRTUAL TOUR	https://my.matterport.com/show/?m=D7xiqQ-SEini

Jeff Lim
Principal, Leasing

604-661-5619
jeff.lim@bgo.com

bentallgreenoakleasing.com

BentallGreenOak (Canada) LP

Suite 1008 - 500 Burrard Street,
Vancouver, BC V6C 2B5
CANADA

bgo.com

