



Macdonald  
Realty



**FOR LEASE**

**Office**

#205 - 4378 Beresford St  
Burnaby, BC

---

# GOLD HOUSE

For more information, please contact:

---

Steven Oh PREC\*  
d: 604.715.8000  
e: [oh@stevenoh.com](mailto:oh@stevenoh.com)

\*personal real estate corporation

This communication is not intended to cause or induce breach of an existing agency agreement. Although this information has been received from sources deemed reliable, We assume no responsibility for its accuracy and without offering advice, make this submission to prior sale or lease, change in price or terms, and withdrawal without notice.



**GOLD  
HOUSE**





Civic Address: #205 - 4378 Beresford St.  
Burnaby, BC

Size: 750 SF

Net Rent: \$42.00 per SF

Operating & taxes: \$25.00 per SF

Parking: 1 Stall

Available: Immediately

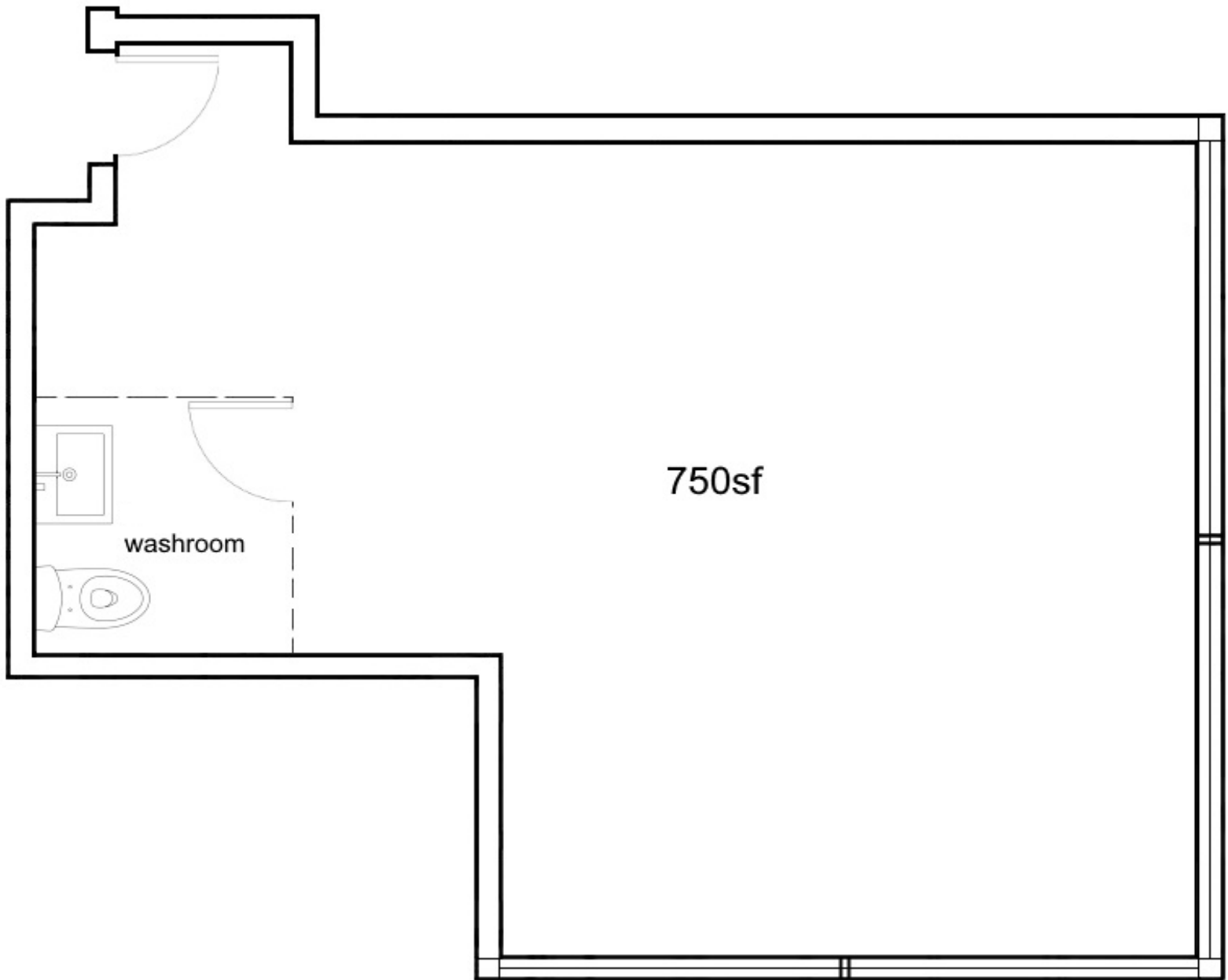
Zoning: Community Commercial  
District (C2)

# Executive Summary

## BUILDING HIGHLIGHTS

- Approximately 12 feet (Levels 2-3) to 19 feet (Level 4) slab to slab ceiling heights on office units
- Dedicated commercial elevator
- Secured underground parking
- Bike storage for commercial use (not assigned)
- Commercial use only end of trip facilities (showers, washrooms and lockers) located on P1 level
- Excellent exposure along Beresford Street
- Within a 2 minute walk to Metrotown Station (SkyTrain) and a 7 minute walk to Metropolis at Metrotown Mall
- Dedicated commercial loading area (not enclosed)
- Canada's largest digital screen as a canvas for our Public Art worth over \$1 Million
- Located along the Beresford Art Walk, (over \$10 Million of Public Art), which is transforming the area into a culturally significant destination





CALL FOR MORE INFORMATION. INCENTIVE AVAILABLE TO QUALIFIED TENANTS.



GOLD  
HOUSE  
◇

