

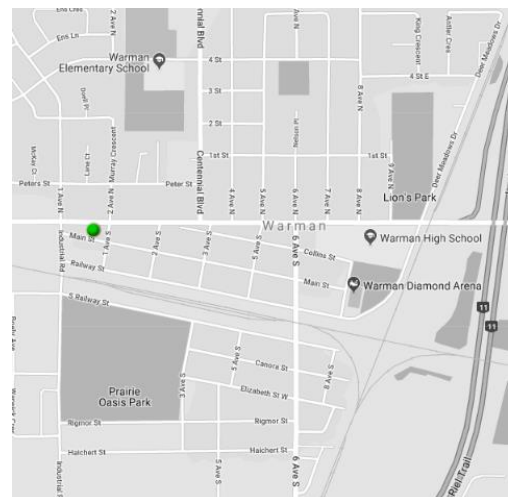
AVAILABLE FOR LEASE

MULTIPLE BAYS



505 CENTRAL STREET WARMAN • SK

| | |
|-----------------|--|
| Available Sizes | Auto Service Centre plus showroom and offices: +/- 3,946 SF Unit 1: 960 SF Unit 2: 960 SF Unit 3: 960 SF Can be combined for a total of 6,826 SF |
| Ceiling Height | 12' |
| Loading | 7 Grade-Level OH doors; Including Drive-Thru OH doors in Auto Shop |
| Parking | On-site, paved |
| Lease Rate | \$21.00 Gross |
| Possession | Negotiable |
| Zoning | C1 |





FLOOR PLANS

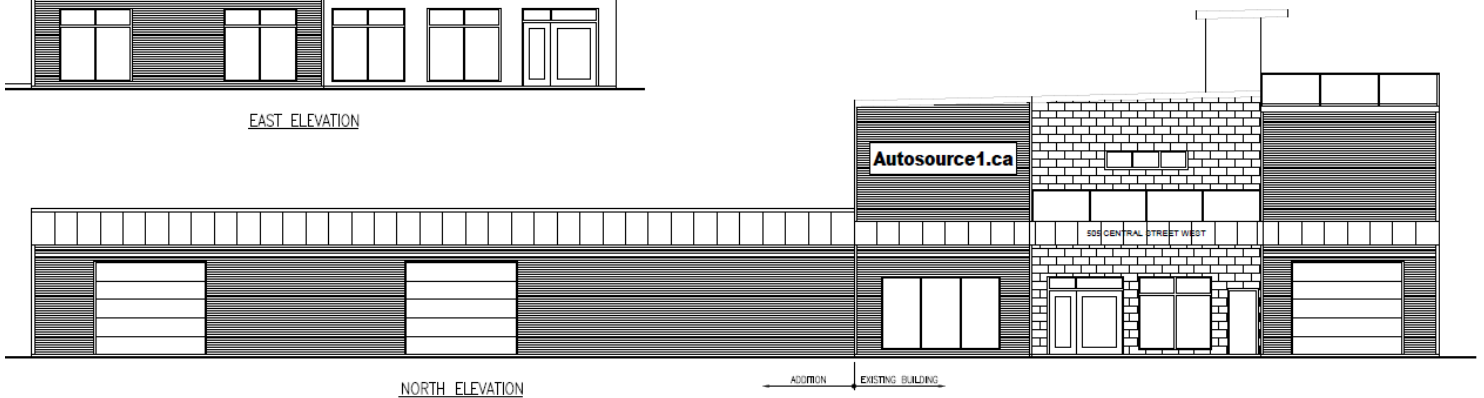
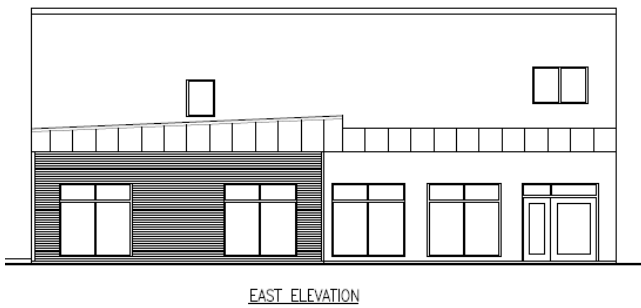
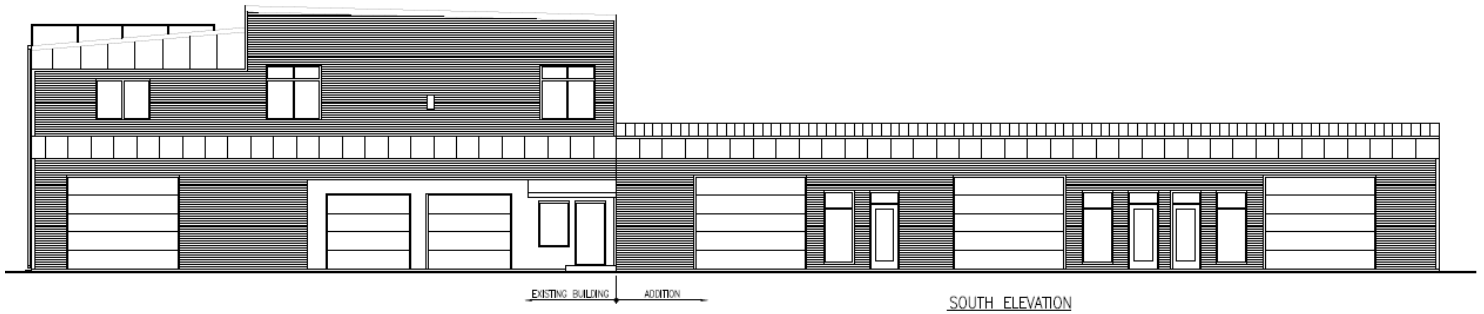
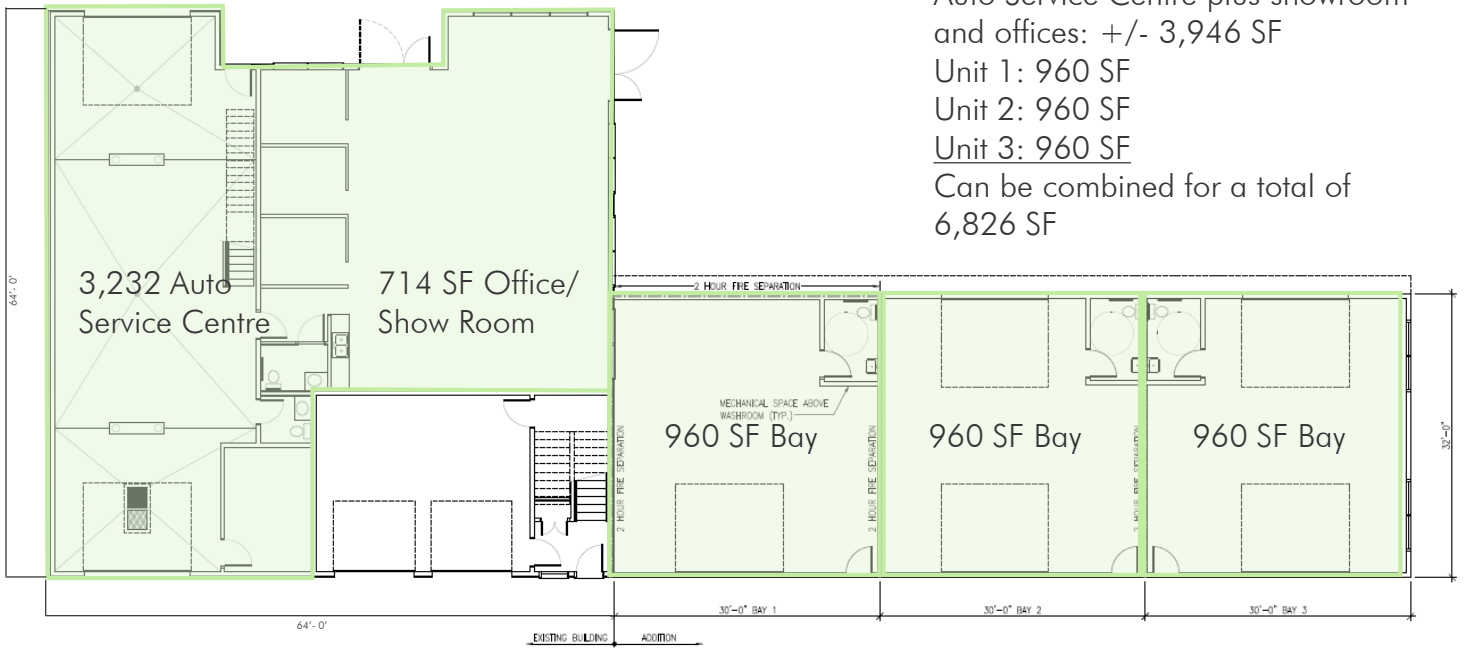
Auto Service Centre plus showroom and offices: +/- 3,946 SF

Unit 1: 960 SF

Unit 2: 960 SF

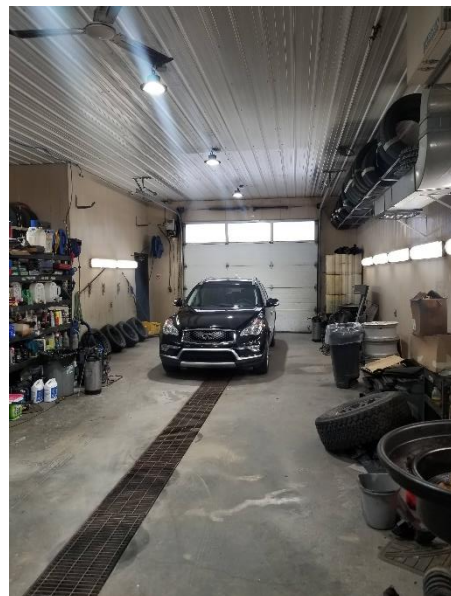
Unit 3: 960 SF

Can be combined for a total of 6,826 SF



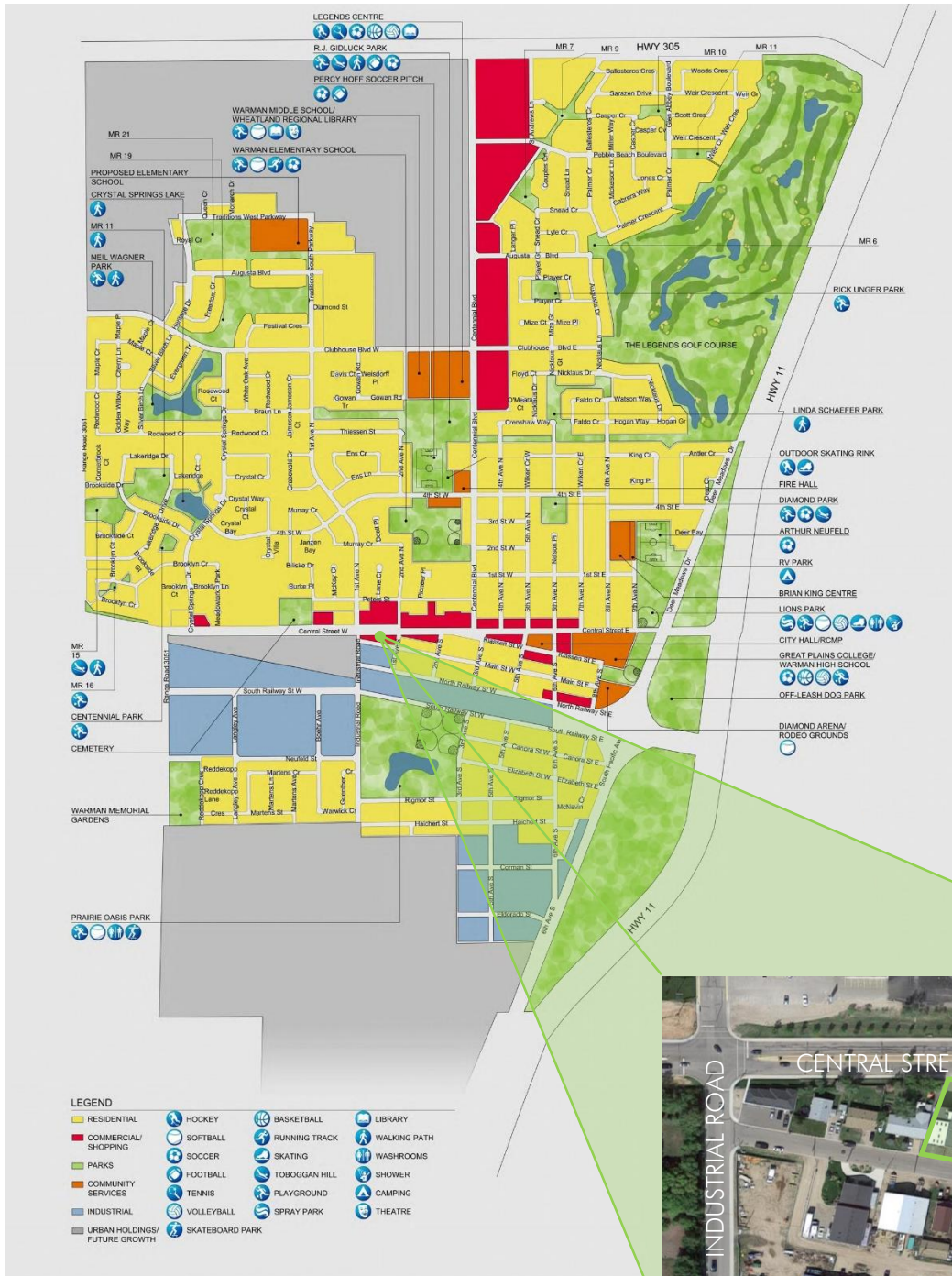


PROPERTY PHOTOS





AREA MAP



CONTACT US



MICHAEL J. BRATVOLD

Vice President
+1 306 803 5977
michael.bratvold@cbre.com

SHANE ENDICOTT

Sales Representative
+1 306 803 5978
shane.endicott@cbre.com

This disclaimer shall apply to CBRE Limited, Real Estate Brokerage, and to all other divisions of the Corporation; to include all employees and independent contractors ("CBRE"). The information set out herein, including, without limitation, any projections, images, opinions, assumptions and estimates obtained from third parties (the "Information") has not been verified by CBRE, and CBRE does not represent, warrant or guarantee the accuracy, correctness and completeness of the Information. CBRE does not accept or assume any responsibility or liability, direct or consequential, for the Information or the recipient's reliance upon the Information. The recipient of the Information should take such steps as the recipient may deem necessary to verify the Information prior to placing any reliance upon the Information. The Information may change and any property described in the Information may be withdrawn from the market at any time without notice or obligation to the recipient from CBRE. CBRE and the CBRE logo are the service marks of CBRE Limited and/or its affiliated or related companies in other countries. All other marks displayed on this document are the property of their respective owners. All Rights Reserved.