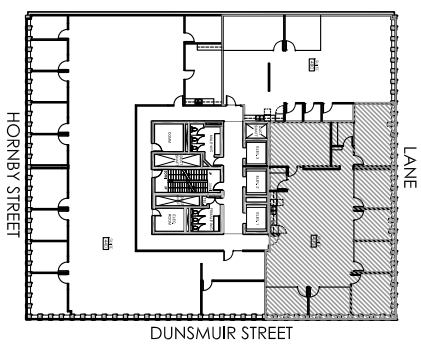
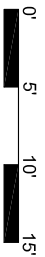
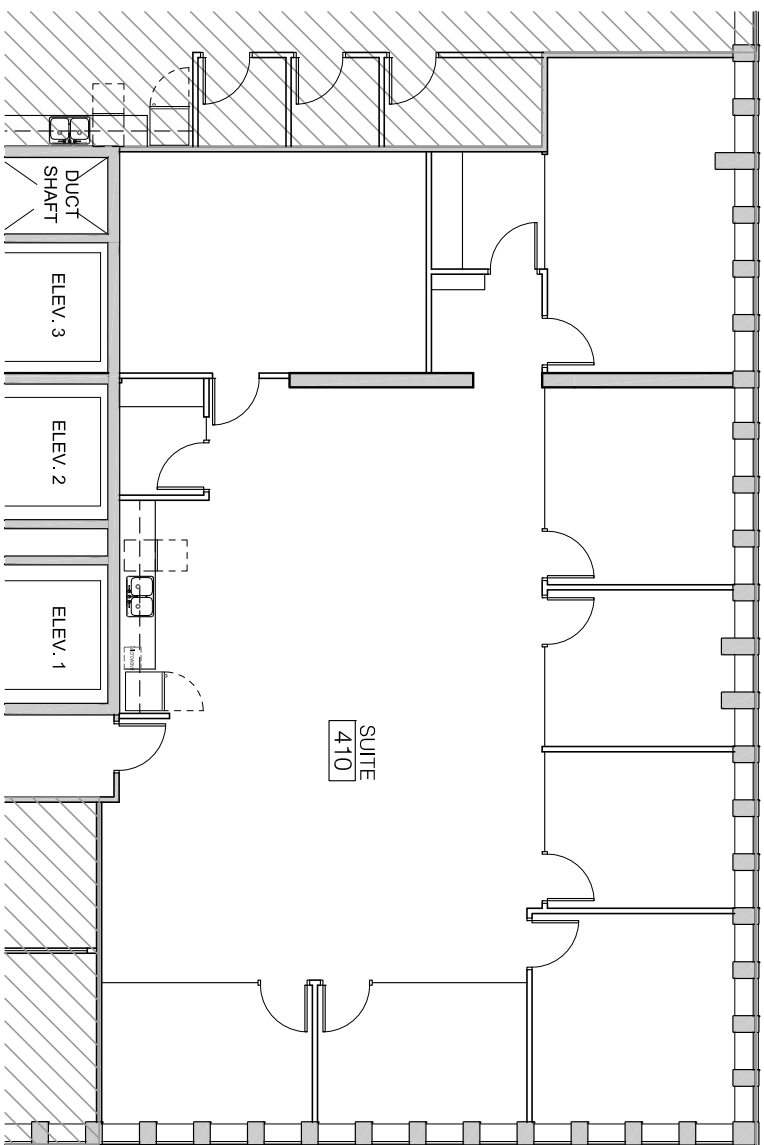


**SUITE 410**  
**APPROX. 3,325**  
**RENTABLE SQ. FT.**



**SITE PLAN**  
**SCALE: NOT TO SCALE**

**885**  
**DUNSMUIR ST.**  
 SUITE 410  
 885 DUNSMUIR STREET  
 VANCOUVER, BC

**RENTABLE AREA: 3,325 SQ.FT.**  
**SUBJECT TO LANDLORD VERIFICATION**  
 May 2020  
 SCALE: NOT TO SCALE

**EXISTING FLOOR PLAN**

MANAGED BY:  
**WEST PENDER**  
**PROPERTY GROUP**  
 230 - 830 West Pender Street  
 Vancouver, BC