



Industrial / office space for lease

562 - 568 Sovereign Road, London Ontario

- 15,675 sf standalone building
- Secured fencing on site
- 20' - 24' clear heights in warehouse
- Two 12' drive in shipping doors

Charlie Gobert

Sales Representative, Principal

+1 226 289 2836

charlie.gobert@avisonyoung.com

Nolan Adkin

Broker, Principal

+1 226 289 2799

nolan.adkin@avisonyoung.com

**AVISON
YOUNG**

Opportunity

Offering 15,675 sf of industrial/office space. 11,400 sf of industrial space, two large 16' x 12' drive-in doors, 11,400 sf at 20'-24' clear, 4,275 at 12' clear with 4,275 sf of office space on the second floor. Fully fenced secure 1 acre yard with plenty of parking.

Located off of Veterans Memorial Parkway, giving access to Highway 401 and surrounding areas within in minutes.

Building sizes	15,675 sf
Office area	4,275 sf
Lot size	1 acre
Zoning	LI2, LI7
Clear height	20' - 24'
Parking	Ample onsite

Land lease option

Availabilities

Outdoor storage space for lease. 0.2 acre of storage space within a secured lot. Site can be used for businesses such as reliable space for parking, equipment storage, or fleet staging. The fully fenced site provides secured access, with ample room to accommodate vehicles, trailers or materials.

Conveniently located and easily accessible, this property is well-suited for contractors, logistics companies, or any user requiring efficient outdoor storage in a secure environment.



0.2 acre
Lot size



\$2,000 / month
Asking rate

Industrial options

Availabilities

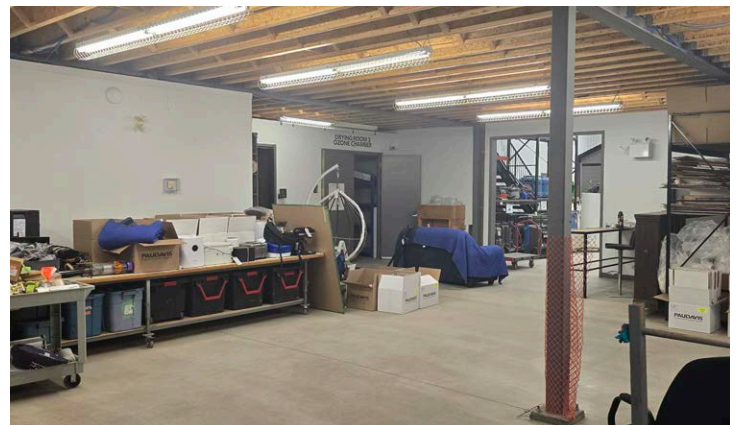
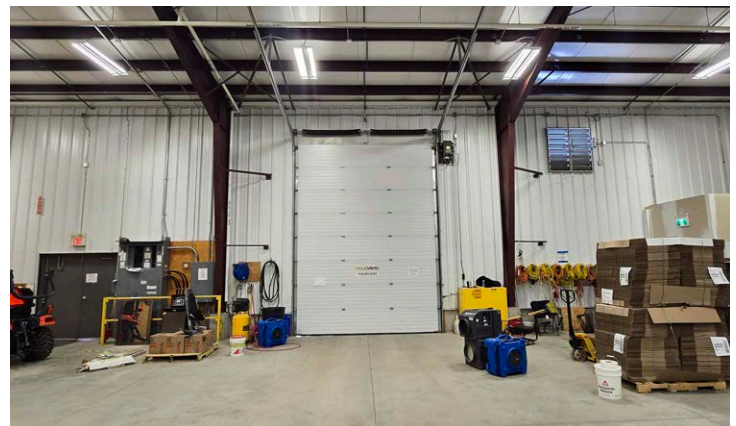
Main space	8,500 sf
Shipping	16' x 12' drive in door
Clear height	12' - 24'
Asking rate	\$15 psf

Offering 8,500 sf of industrial space, one large 16' x 12' drive in doors, 4,255 sf at 20'-24' clear, 4,275 at 12' clear with 4,275 sf of office space on the second floor. Additional options for outdoor storage and built out office space.

Full space	12,775 sf
Shipping	16' x 12' drive in door
Clear height	12' - 24'
Asking rate	\$12 psf

12,775 sf industrial unit available in East London. 8,500 sf of industrial space with a 16'x12' drive in door for efficient loading. The unit includes 4,225 sf with 20'-24' clear height and 4,275 sf with 12' clear, offering flexibility for storage, manufacturing or service uses.

This offering also features 4,275 sf of second floor office space, providing a functional mix of warehouse and administrative area in a well-located industrial node.

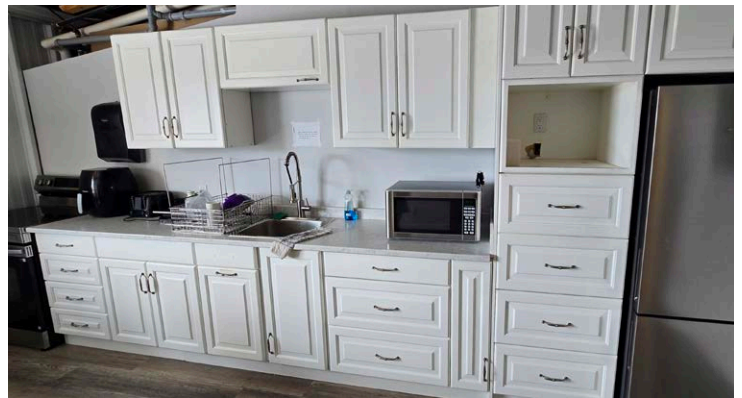


Office options

Availabilities

Second floor office space available at 568 Sovereign Road, London, totaling 4,275 sf. The layout offers a functional mix of private offices and open workspace, suitable for a range of administrative or professional uses.

Well-positioned within an established industrial node, the space provides a convenient option for businesses seeking dedicated office area alongside nearby industrial amenities.



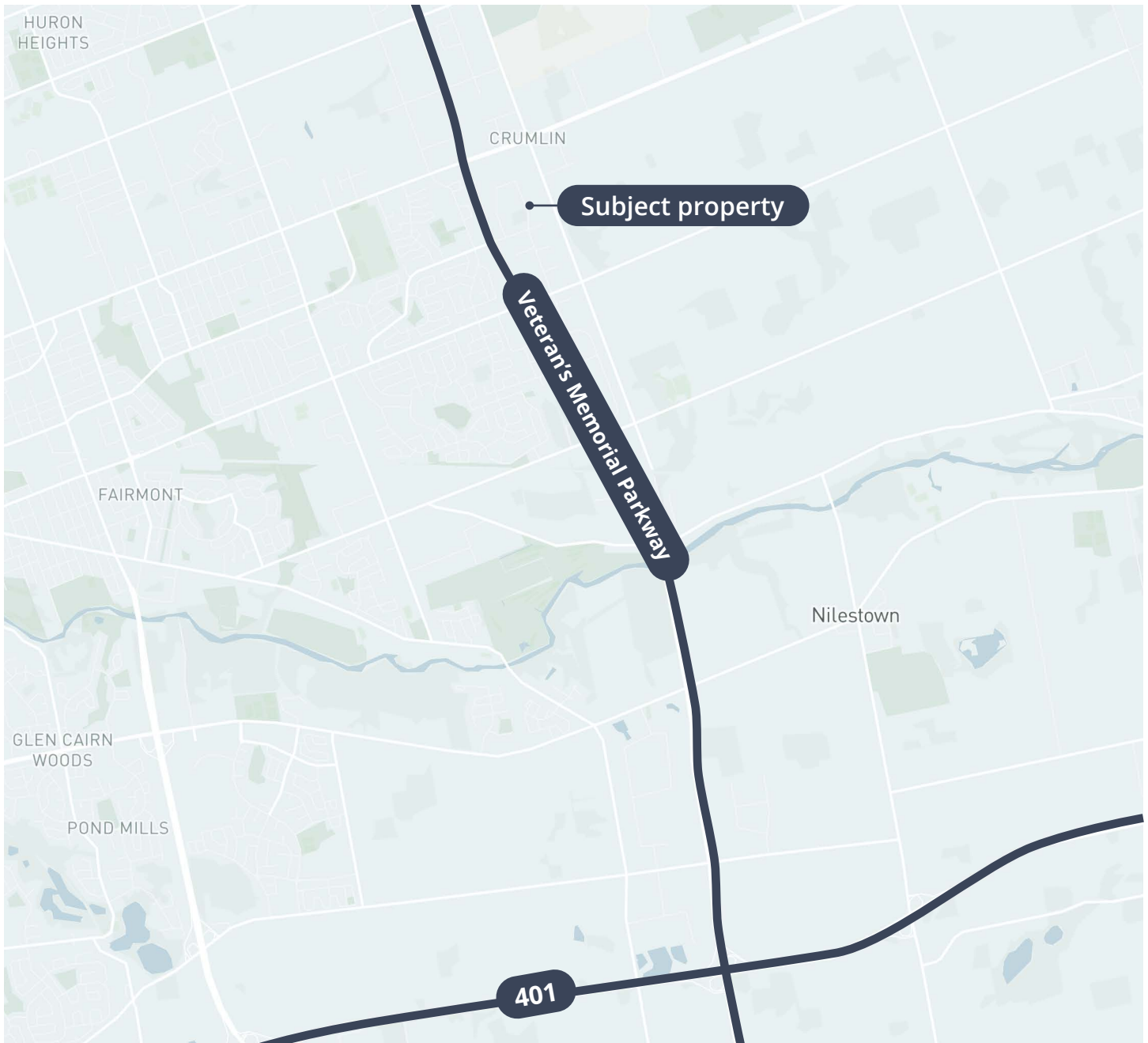
4,275 sf
Office space



Onsite
Parking



\$8 psf
Asking net rate



Get more information

Charlie Gobert

Sales Representative, Principal
+1 226 289 2836
charlie.gobert@avisonyoung.com

Nolan Adkin

Broker, Principal
+1 226 289 2799
nolan.adkin@avisonyoung.com

Avison Young Commercial Real Estate Services, LP, Brokerage
495 Richmond Street, Unit 104, London, ON N6A 5A9
T +1 226 366 9090 F +1 866 541 9755

**AVISON
YOUNG**

**CANADA BEST
MANAGED
COMPANIES**
Platinum member