

FOR SALE

31315 & 31245 HAMILTON PLACE • MISSION • BC

CDW



CDW
& ASSOCIATES
COMMERCIAL REAL ESTATE

CHARLES WIEBE, CIPS, E. TECH
COMMERCIAL REALTOR®
778-549-8555
charles@cdwandassociates.com

MARTY PETERS, CIPS
COMMERCIAL REALTOR®
604-308-2931
marty@cdwandassociates.com

cdwandassociates.com

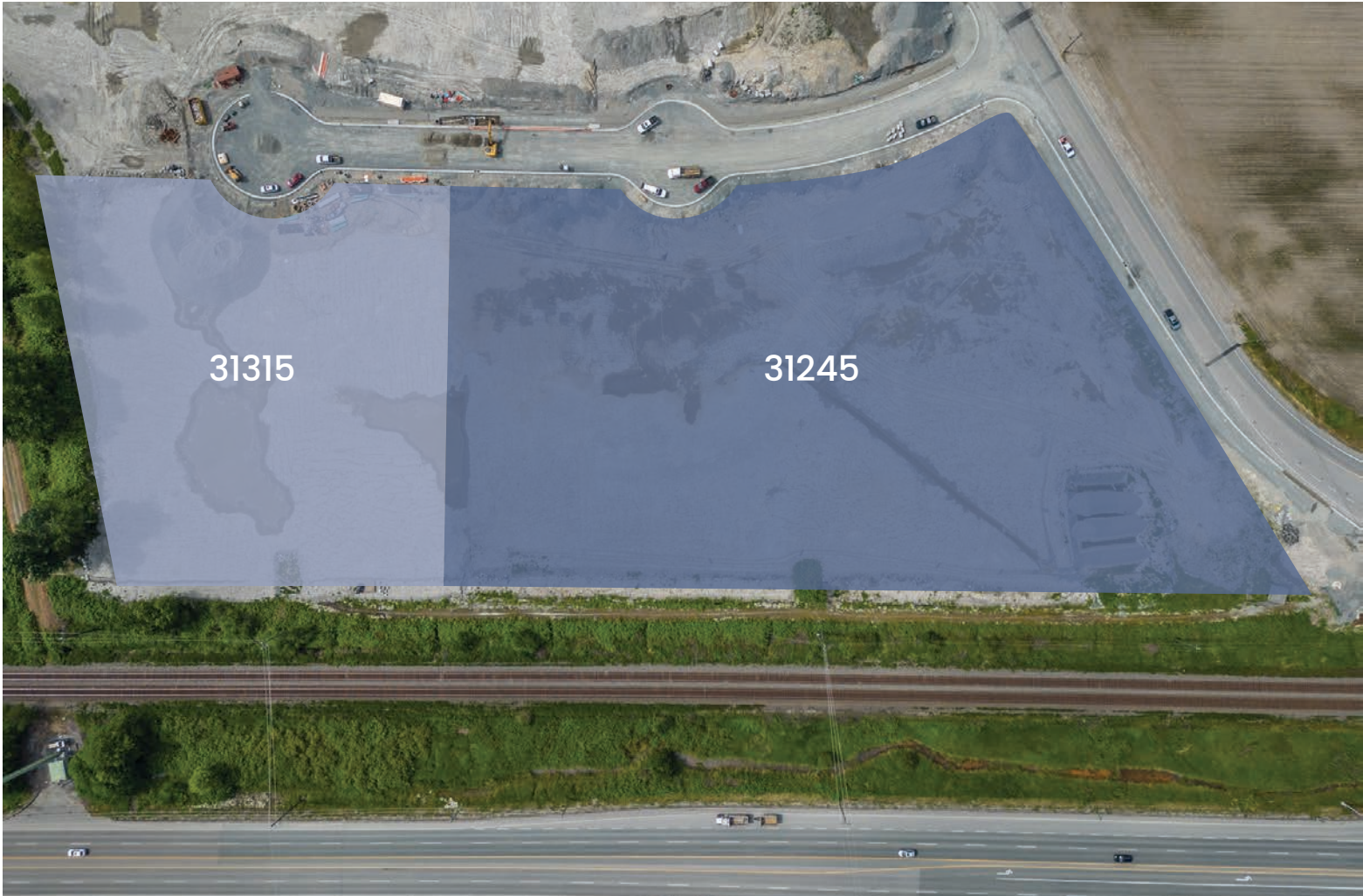
501 - 889 Pender Street, Vancouver, BC

RE/MAX
COMMERCIAL
RE/MAX COMMERCIAL ADVANTAGE



Each office independently owned and operated.





**BARE INDUSTRIAL LAND
MISSION, BC**

**31315 HAMILTON PLACE
\$9,250,000**

**31245 HAMILTON PLACE
\$21,500,000**

**SALE TYPE:
ASSET**

**LAND SIZE:
31245: 6.4 Acres
31315: 3.29 Acres**

**MLS NUMBER:
TBA**

**ZONING:
INBPI**

UNIQUE OPPORTUNITY AWAITS FOR THE ACQUISITION OF INDUSTRIAL LAND IN MISSION, BC. Presently configured as two parcels, boasting flexible industrial zoning, and strategically situated along the bustling Lougheed Highway corridor within the Silverdale Industrial area, near the Fraser River and Rail.

These parcels will be provided with services up to the lot lines, featuring flat grade and pre-load gravel finish upon delivery.



Ideal for a spectrum of uses including tilt-up industrial buildings, distribution centers, storage facilities, and beyond. Positioned as an exceptional proposition for enterprises seeking to expand or establish a prominent presence within the Fraser Valley.

SITUATED ALONG THE BUSTLING LOUGHEED HIGHWAY CORRIDOR WITHIN THE SILVERDALE INDUSTRIAL AREA, NEAR THE FRASER RIVER AND RAIL.



The information contained herein has been obtained through sources deemed reliable by CDW & Associates - RE/MAX Commercial Advantage, but cannot be guaranteed for its accuracy. We recommend to the buyer that any information which is of special interest should be obtained through independent verification. ALL MEASUREMENTS ARE APPROXIMATE.

ACCESS FROM BOTH WEST AND EAST VIA THE LOUGHEED HWY

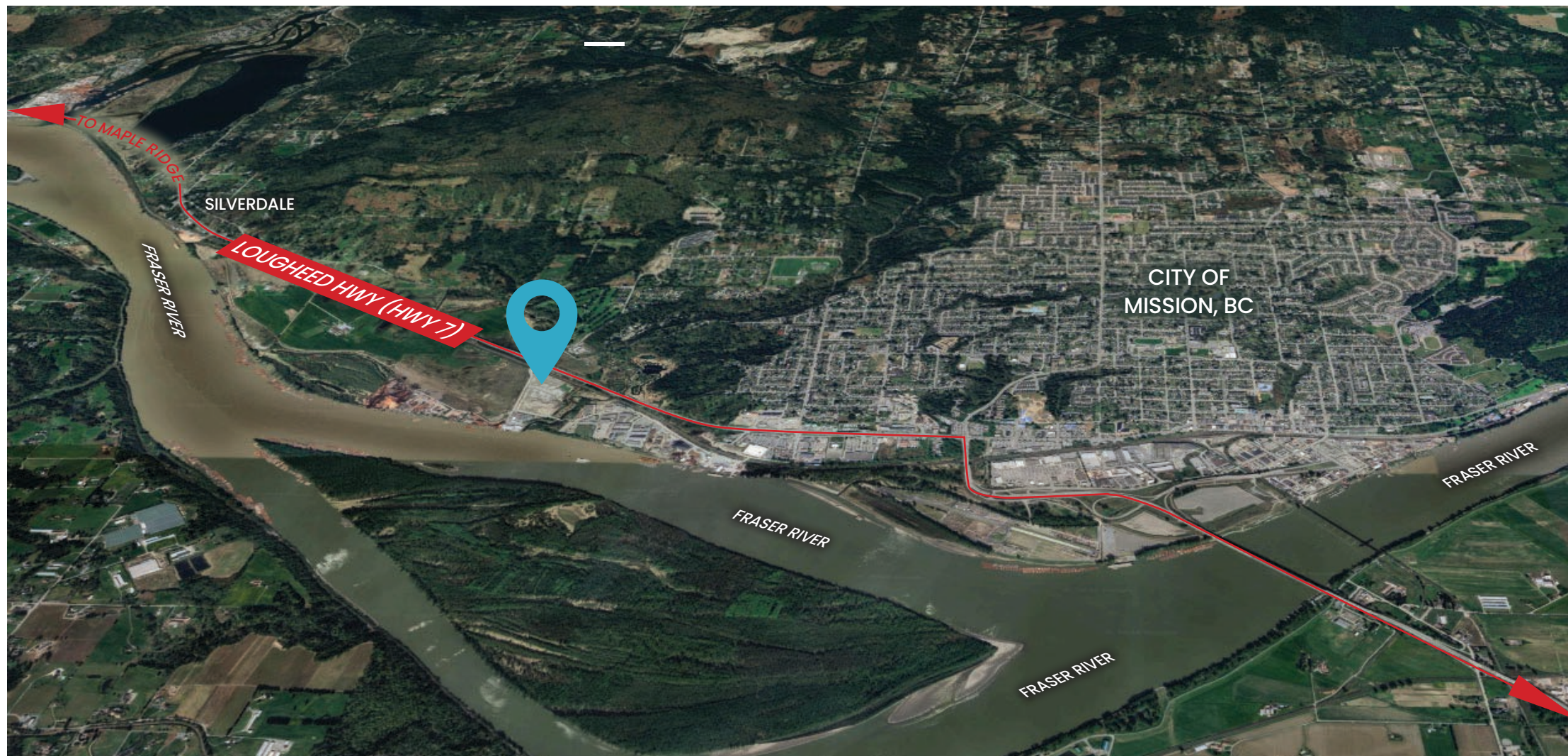
NEAR THE FRASER RIVER

CLOSE PROXIMITY TO RAIL SERVICE



SPECTRUM OF USES
INCLUDING TILT-UP
INDUSTRIAL BUILDINGS,
DISTRIBUTION CENTERS,
STORAGE FACILITIES,
AND BEYOND
LOCATED ON SOUTH SIDE OF
LOUGHEED HWY

CDW



DISTRICT OF
Mission
ON THE FRASER



TO ABBOTSFORD

CDW & ASSOCIATES COMMERCIAL REAL ESTATE

CHARLES WIEBE, CIPS, E. TECH

COMMERCIAL REALTOR®

778-549-8555

charles@cdwandassociates.com

MARTY PETERS, CIPS

COMMERCIAL REALTOR®

604-308-2931

marty@cdwandassociates.com

