

FOR SALE

SUITES 208 & 209

1730 WEST 2<sup>ND</sup> AVENUE

Vancouver, BC

—  
2,371 sf of well-appointed professional office space



**Jake Luft\***

Senior Vice President

778.828.4245

[jake.luft@macdonaldcommercial.com](mailto:jake.luft@macdonaldcommercial.com)

*\*Personal Real Estate Corporation* | Macdonald Commercial Real Estate Services Ltd.

**Macdonald**  
COMMERCIAL

— member of —  
**CORFAC**  
INTERNATIONAL

# SALIENT DETAILS

## CIVIC ADDRESS

Suites 208 & 209 at 1730 West 2nd Avenue, Vancouver, BC

## PROPERTY IDENTIFIERS

024-915-432; 024-915-441; 024-915-718; 024-915-726;  
024-916-056; 024-916-064

## LEGAL DESCRIPTION

Strata Lots 11, 12, 39, 40, 73 and 74, District Lot 526, Group 1, New Westminster District, Strata Plan LMS4328, together with an interest in the common property in proportion to the unit entitlement of the strata lots as shown on Form V

## ZONING

CD-1 (389) Comprehensive Development

## FLOOR AREA

Suite 208 1,145 sq. ft.  
Suite 209 1,226 sq. ft.  
2,371 sq. ft.

## MONTHLY STRATA FEES (2026)

\$1,725.41

## BC ASSESSMENT (AS OF JULY 1, 2025)

\$2,534,500

## YEAR BUILT

2001

## PROPERTY TAXES (2025)

\$27,599.55

## SALE PRICE

**\$2,598,000**

## OPPORTUNITY

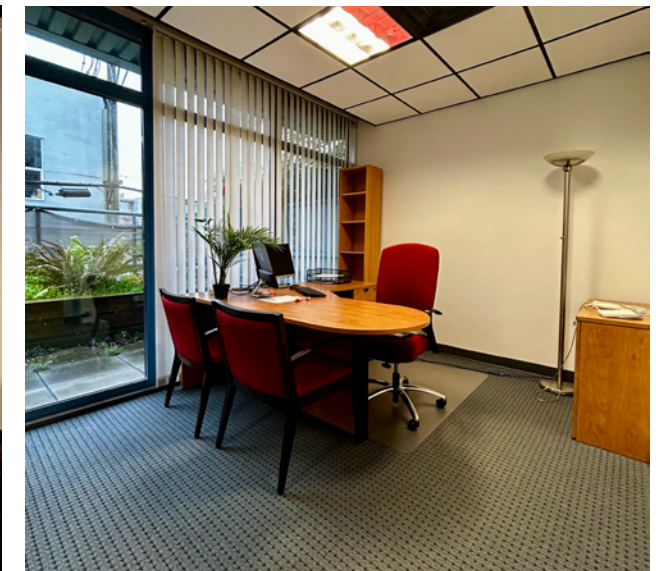
Second-floor office opportunity in Vancouver's Kitsilano neighbourhood, comprising two combined strata units (208 & 209) totaling 2,371 sf. The premises offer a highly functional layout with reception, boardroom, nine private offices, open work area, kitchen, and washroom, complemented by a south-facing patio and excellent natural light.

Well suited for an owner-user seeking long-term occupancy in a desirable and supply-constrained market, the space accommodates a range of office and commercial uses permitted under the existing CD-1 zoning.

## BUILDING DESCRIPTION

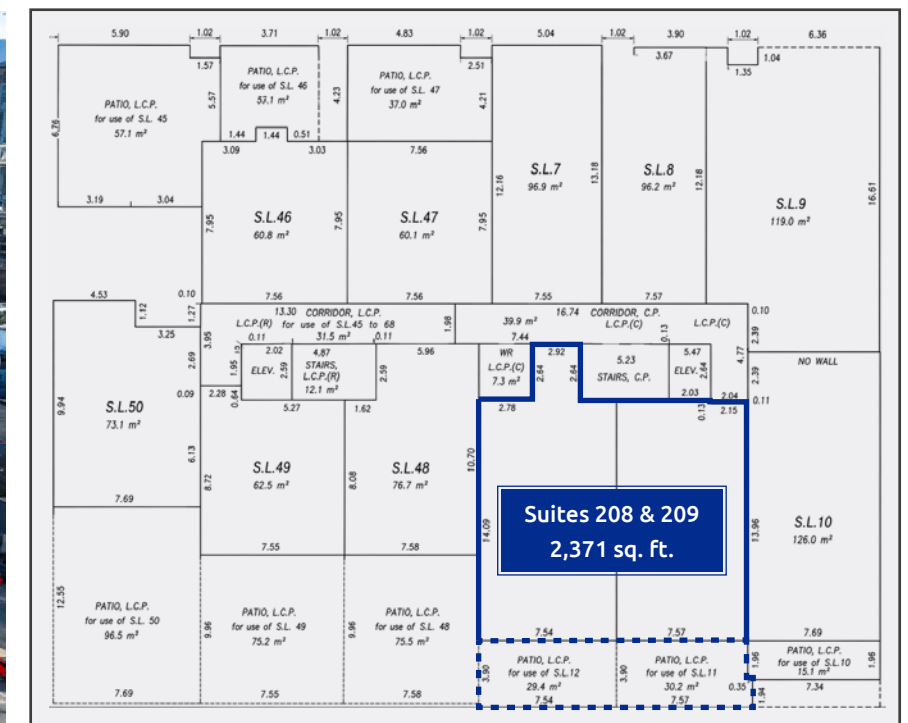
The property is improved with a four-storey, mixed-use strata building constructed circa 2001, comprising approximately 80 strata units, including titled parking and storage, with ground floor commercial and upper-level office and residential uses. The building is constructed with a structural steel frame, reinforced concrete, and concrete block, and is finished with a tile and glass block façade.

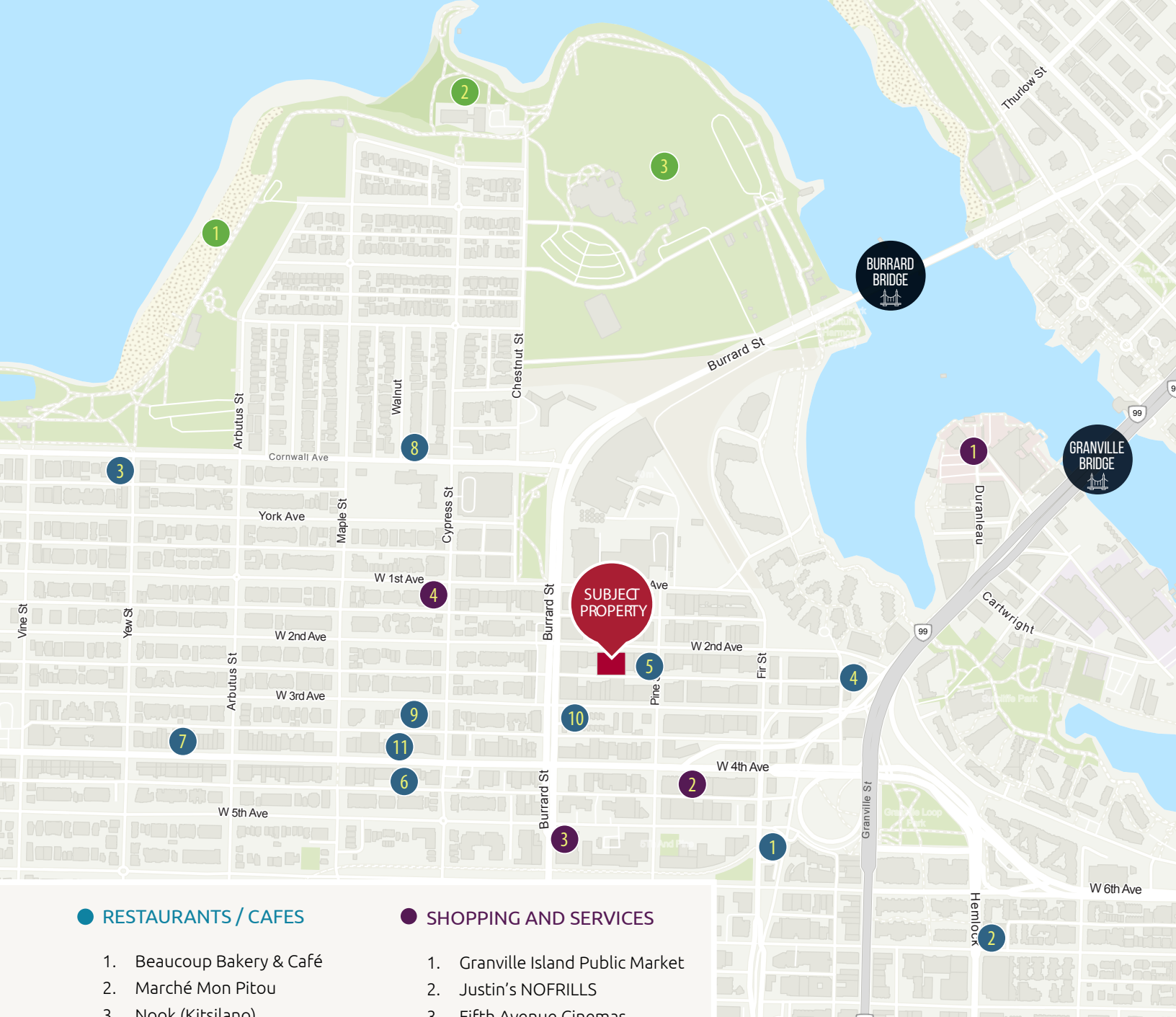
The building is serviced by two elevators and includes secured underground residential parking, along with a limited number of commercial parking stalls. The property is well maintained and provides a professional setting for office users.



# HIGHLIGHTS

- » 2,371 sf of contiguous second-floor office space (Units 208 & 209)
- » Functional, improved layout with reception, boardroom, private offices, and open work area
- » South-facing patio providing excellent natural light
- » Air-conditioned premises
- » 2 secured parking stalls and 2 secured storage lockers
- » Elevator-served building with secure underground parking
- » Located steps from Granville Island
- » Amenity-rich neighbourhood with excellent transit accessibility





**● RESTAURANTS / CAFES**

1. Beaucoup Bakery & Café
2. Marché Mon Pitou
3. Nook (Kitsilano)
4. Afghan Horsemen Restaurant
5. Prado Cafe
6. Fable Kitchen
7. Jam Cafe Kitsilano
8. Kits Beach Coffee
9. Tacofino Kitsilano
10. TV Dinner Coffee & Grocery
11. Maenam

**● SHOPPING AND SERVICES**

1. Granville Island Public Market
2. Justin's NOFRILLS
3. Fifth Avenue Cinemas
4. Be Fresh Local Market

**● PARKS & RECREATION**

1. Kitsilano Beach
2. Hadden Park
3. Vanier Park



**Jake Luft\***  
 Senior Vice President  
 778.828.4245  
 jake.luft@macdonaldcommercial.com  
 \*Personal Real Estate Corporation

Macdonald Commercial Real Estate Services Ltd.  
 1827 W 5th Ave, Vancouver, BC V6J 1P5  
 www.macdonaldcommercial.com

**Macdonald**  
 COMMERCIAL

Although this information has been received from sources deemed reliable, we assume no responsibility for its accuracy, and without offering advice, make this submission subject to prior sale or lease, change in price or terms and withdrawal without notice.