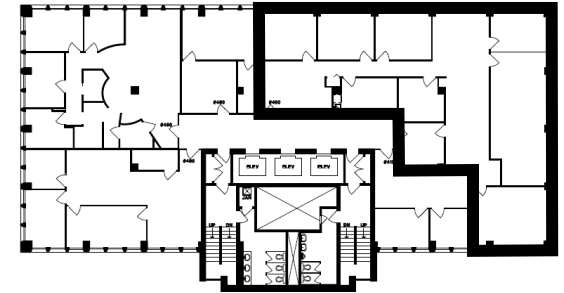
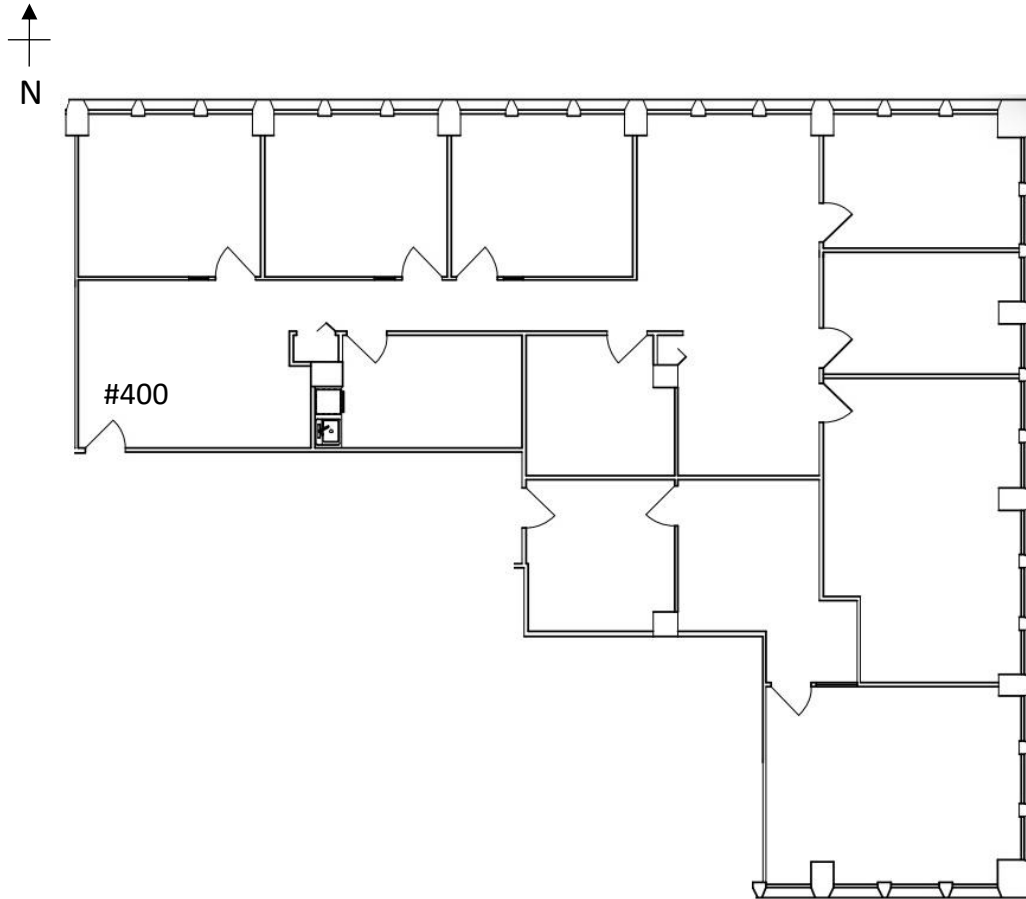


999 West Broadway, Vancouver, BC



West Broadway

Suite 400 3,221 square feet

Description:

Northeast-facing corner unit improved with reception area, six perimeter offices, two interior offices, lunchroom/storage room, and open spaces.

This is a representation for marketing purposes only and should not be used for measurements of any kind. This drawing is not to scale.

TPMG CAPITAL

Real Estate Acquisition
Management
Leasing