

QU  
BE



FOR SALE - OFFICE SPACE

**28 DEAKIN STREET - UNIT 201**

OTTAWA, ONTARIO

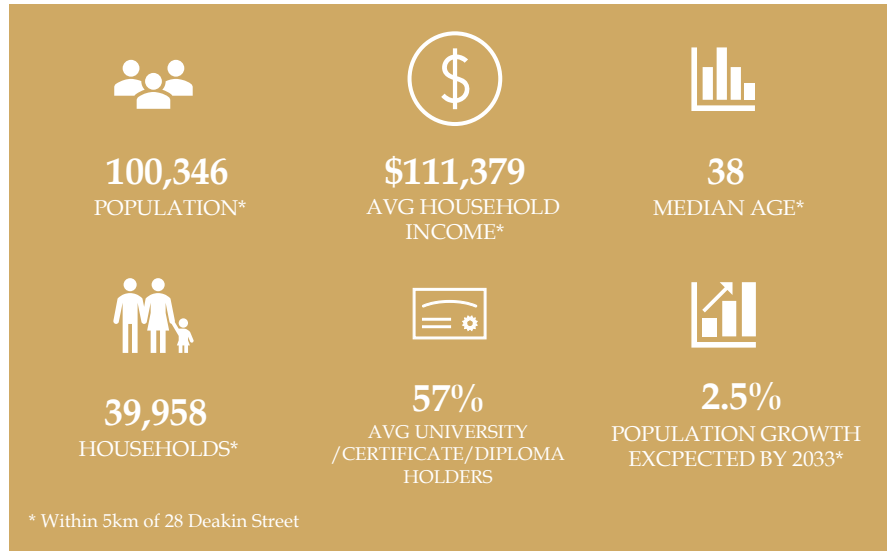
# 28 DEAKIN STREET – UNIT 201

## PROPERTY DETAILS

Premises	Type	Size (SF)	Availability	Purchase Price	Property Taxes
Unit 201	Office	2,200	July 1, 2026	\$775,000	\$8,765 (2025)

## HIGHLIGHTS

- Opportunity to occupy corner suite offering plenty of natural light.
- Fully turnkey office space with large kitchenette, dishwasher, boardroom and multiple offices.
- Located in the Nepean neighbourhood in close proximity to Ottawa International Airport and accessible by OC Transit routes.
- 6 surface parking stalls included with Suite.

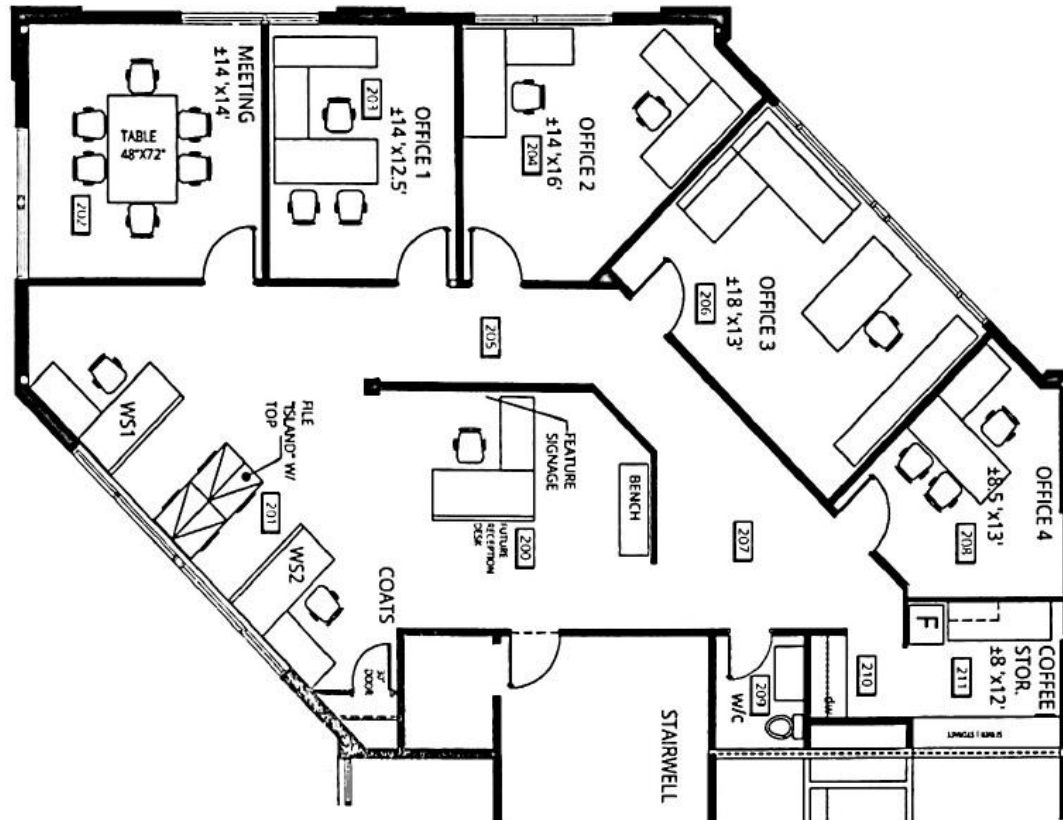


**QUINTIN COLAIACOVO**  
BROKER OF RECORD  
(613) 371 1140  
[quintin@qubeproperties.com](mailto:quintin@qubeproperties.com)

**QUBE PROPERTIES LTD.**  
REAL ESTATE BROKERAGE  
255 MICHAEL COWPLAND DRIVE  
OTTAWA ON K2M 0M5

**QUBE**  
PROPERTIES

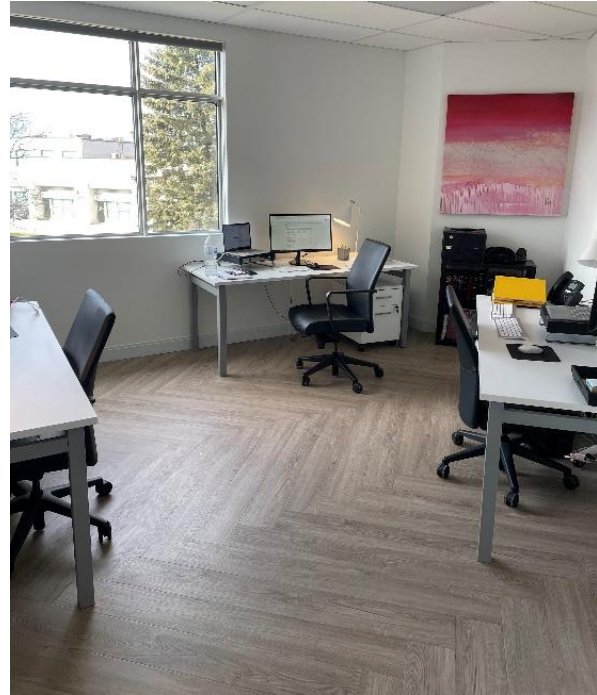
# FLOORPLAN – UNIT 201



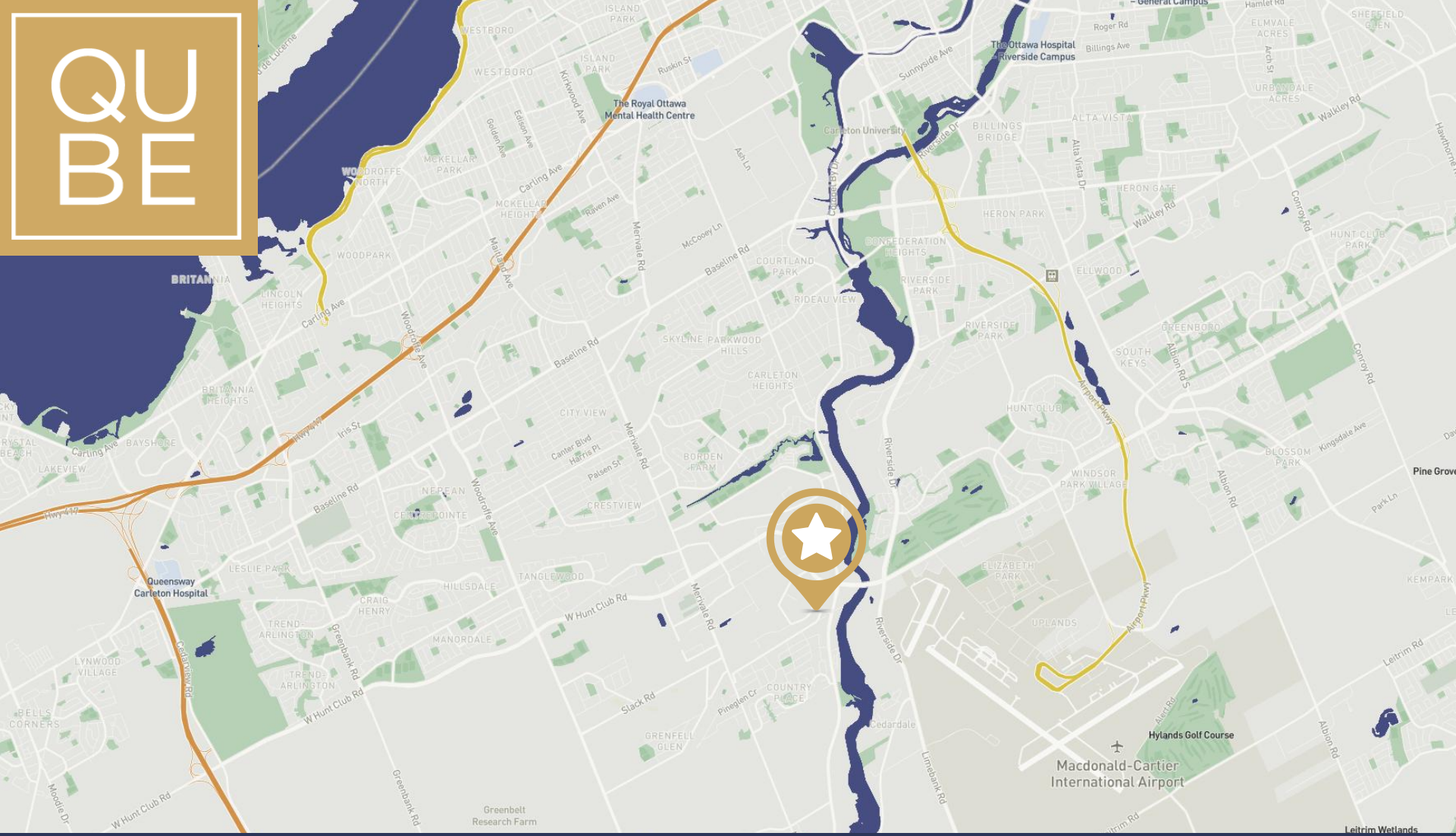
**QUINTIN COLAIACOVO**  
BROKER OF RECORD  
(613) 3711140  
[quintin@qubeproperties.com](mailto:quintin@qubeproperties.com)

**QUBE PROPERTIES LTD.**  
REAL ESTATE BROKERAGE  
255 MICHAEL COWPLAND DRIVE  
OTTAWA ON K2M 0M5

**QUBE**  
PROPERTIES



# QUBE



**QUINTIN COLAIACOVO**  
BROKER OF RECORD  
(613) 371 1140  
[quintin@qubeproperties.com](mailto:quintin@qubeproperties.com)

**QUBE PROPERTIES LTD.**  
REAL ESTATE BROKERAGE  
255 MICHAEL COWPLAND DRIVE  
OTTAWA ON K2M 0M5

# QUBE PROPERTIES

This disclaimer shall apply to Qube Properties Ltd, Real Estate Brokerage, and to all other divisions of the Corporation; to include all employees and independent contractors ("Qube"). The information set out herein, including, without limitation, any projections, images, opinions, assumptions and estimates obtained from third parties (the "Information") has not been verified by Qube, and Qube does not represent, warrant or guarantee the accuracy, correctness and completeness of the Information. Qube does not accept or assume any responsibility or liability, direct or consequential, for the Information or the recipient's reliance upon the Information. The recipient of the Information should take such steps as the recipient may deem necessary to verify the Information prior to placing any reliance upon the Information.