

FOR LEASE

NAI Commercial

OFFICE WAREHOUSE 16,802 SF±
WITH CRANES AND YARD



1101 - 16 AVENUE | NISKU, AB | CRANES & YARD

PROPERTY HIGHLIGHTS

- 16,802 sq.ft.± office/warehouse available for lease on 1.2 acres±
- Two 10 ton bridge cranes
- Improved and fenced yard
- 18'x18' grade loading bays with make up air and sumps
- Easy access to high load corridor, Highway 625, and QEII Highway

RYAN BROWN

Partner
780 964 8624
rbrown@naiedmonton.com

CONOR CLARKE

Senior Associate
587 635 2480
cclarke@naiedmonton.com

CHAD GRIFFITHS

Partner, Associate Broker
780 436 7414
cgriffiths@naiedmonton.com

DREW JOSLIN

Associate
780 540 9100
djoslin@naiedmonton.com



NAI COMMERCIAL REAL ESTATE INC.
4601 99 STREET NW, EDMONTON AB, T6E 4Y1



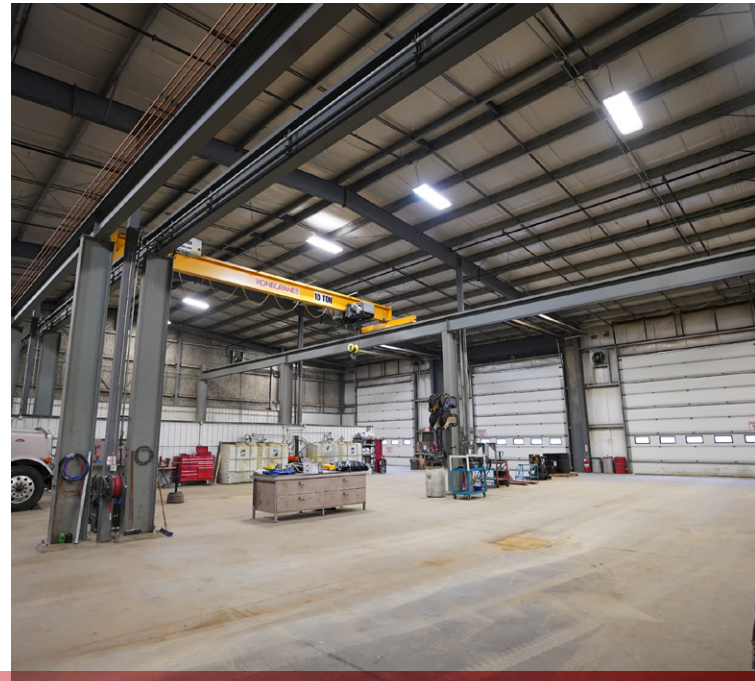
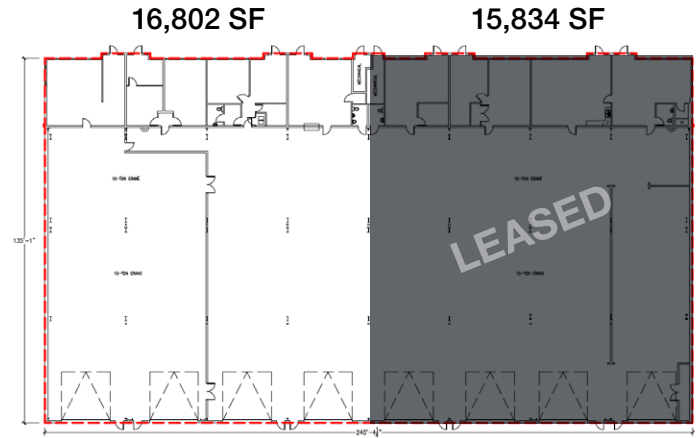
780 436 7410



NAIEDMONTON.COM

BUILDING A INFORMATION

LEGAL DESCRIPTION	Plan 0620522; Block 4: Lot 5
SITE	1.2 acres± (Total site 4.37 acres±)
BUILDING SIZE	16,802 sq.ft.±
CEILING HEIGHT	25'
UNDERHOOK	17'
CRANES	(2) 10 ton cranes
LIGHTING	T5HO & LED lighting
HEATING	Radiant
SHOP AND OFFICE	13,652 sq.ft.± shop 3,150 sq.ft.± office
ADDITIONAL	Male and female locker rooms
YARD	Fully fenced and gated
SUMPS	Dual compartment sumps
LOADING	(4) 18x18' grade
POWER	800 amp, 600 volt, 3 phase (TBC) Additional power may be available
LEASE RATE	\$14.00/sq.ft./annum
OPERATING COSTS	\$3.58/sq.ft./annum (2026) includes property taxes, building insurance, common area maintenance and management fees
AVAILABLE	60-90 days

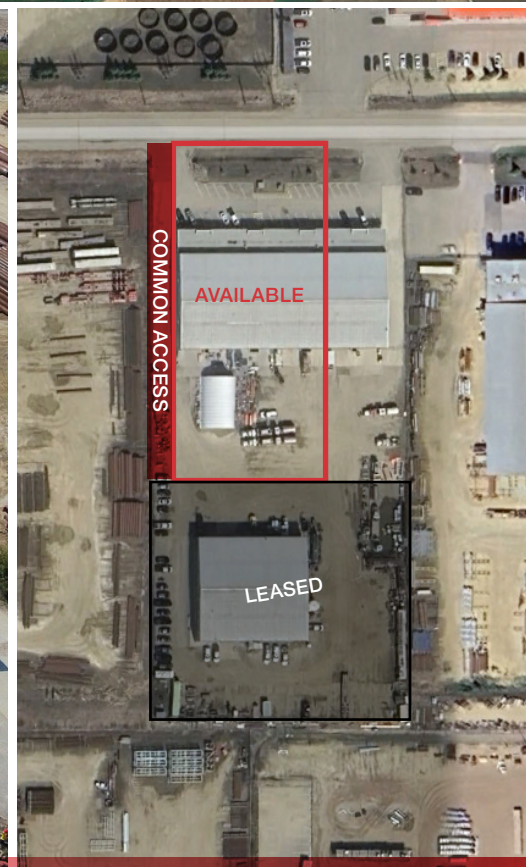
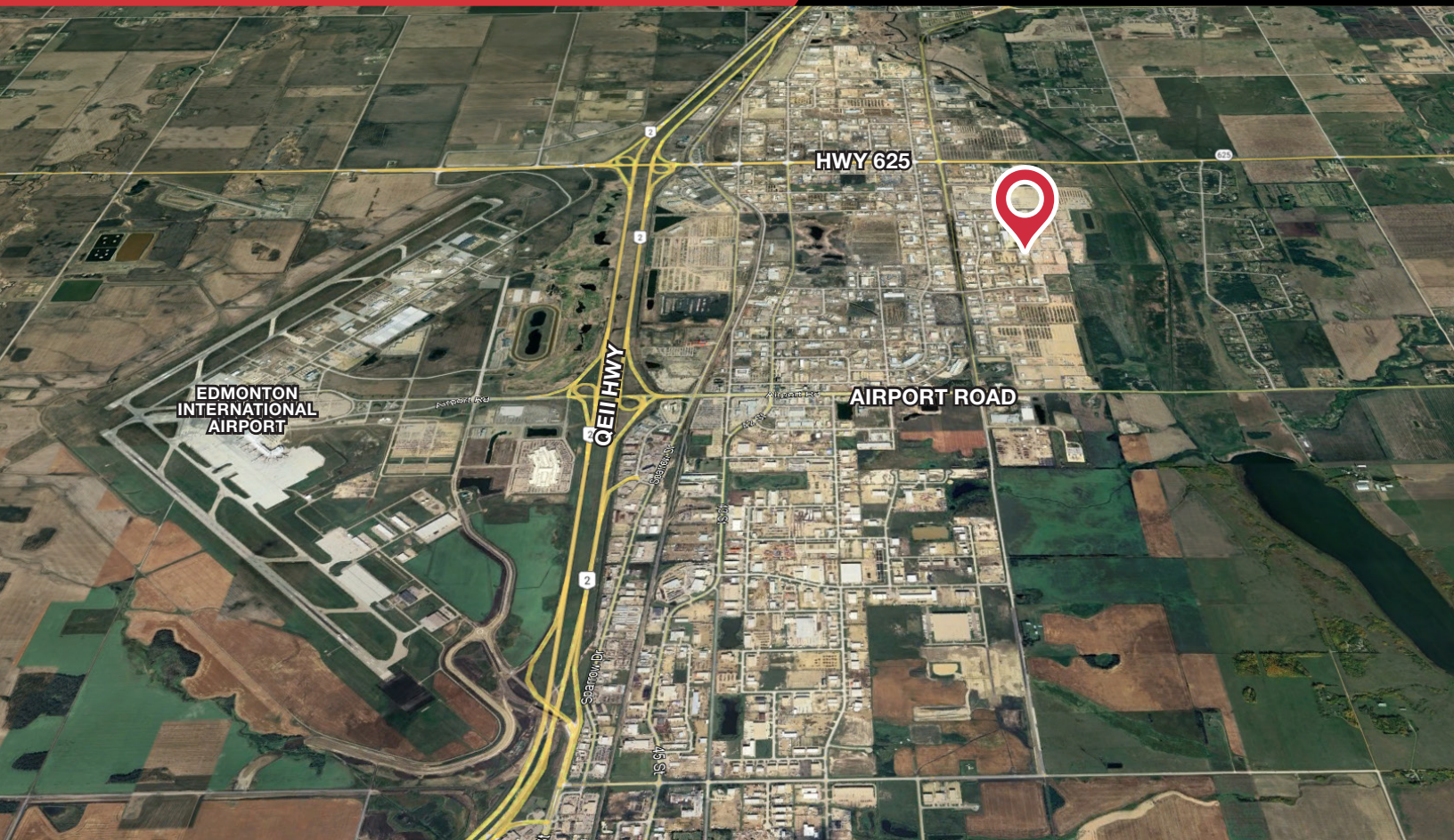


FOR LEASE

NAI Commercial

OFFICE WAREHOUSE 16,802 SF±

1101 - 16 AVENUE | NISKU, AB



NAI COMMERCIAL REAL ESTATE INC.
4601 99 STREET NW, EDMONTON AB, T6E 4Y1



780 436 7410



NAI EDMONTON.COM

7694 RB25

THE INFORMATION CONTAINED HEREIN IS BELIEVED TO BE CORRECT, BUT IS NOT WARRANTED TO BE SO AND DOES NOT FORM A PART OF ANY FUTURE CONTRACT. THIS OFFERING IS SUBJECT TO CHANGE OR WITHDRAWAL WITHOUT NOTICE.