

Retail Space

158 RIDEAU STREET

OTTAWA, ONTARIO



**FOR
LEASE**

QUBE PROPERTIES LTD.
REAL ESTATE BROKERAGE
255 MICHAEL COWPLAND DRIVE
OTTAWA ON K2M 0M5

QU
BE

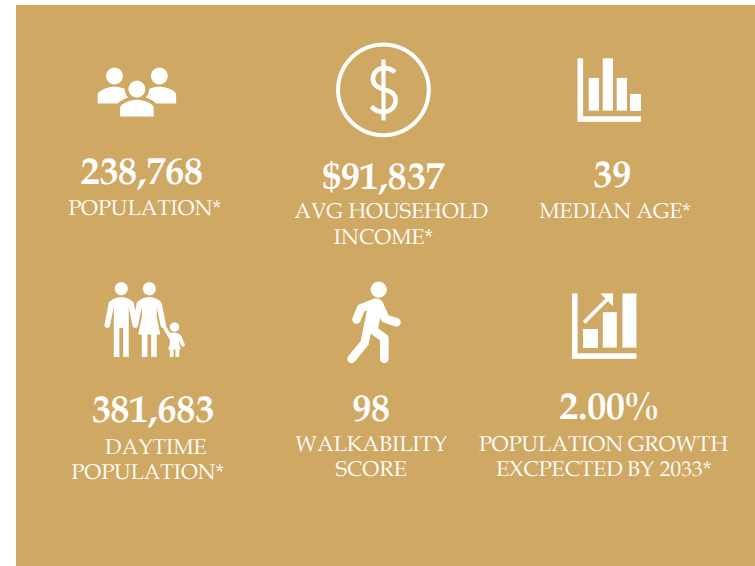
158 RIDEAU STREET

PROPERTY DETAILS

Type	Size (SF)	Base Rent (\$/PSF/Yr)	Additional Rent (\$/PSF/Yr)	Available	Comments
Retail	2,645	\$42.50	\$15.12	Immediate	High ceiling height and full basement for storage

HIGHLIGHTS

- Ground floor retail unit currently built out as footwear and apparel store.
- Ideally located in the heart of the Byward Market, at the corner of Dalhousie Street and Rideau Street steps from Rideau Center.
- Property is easily accessible by Highway 417 on/off ramps at Nicholas Street and also accessible through public transit routes and Rideau LRT Station.
- Nearby retail amenities include Hudson Bay, 3 Brothers Shawarma & Poutine, Joey Rideau, Subway and much more.

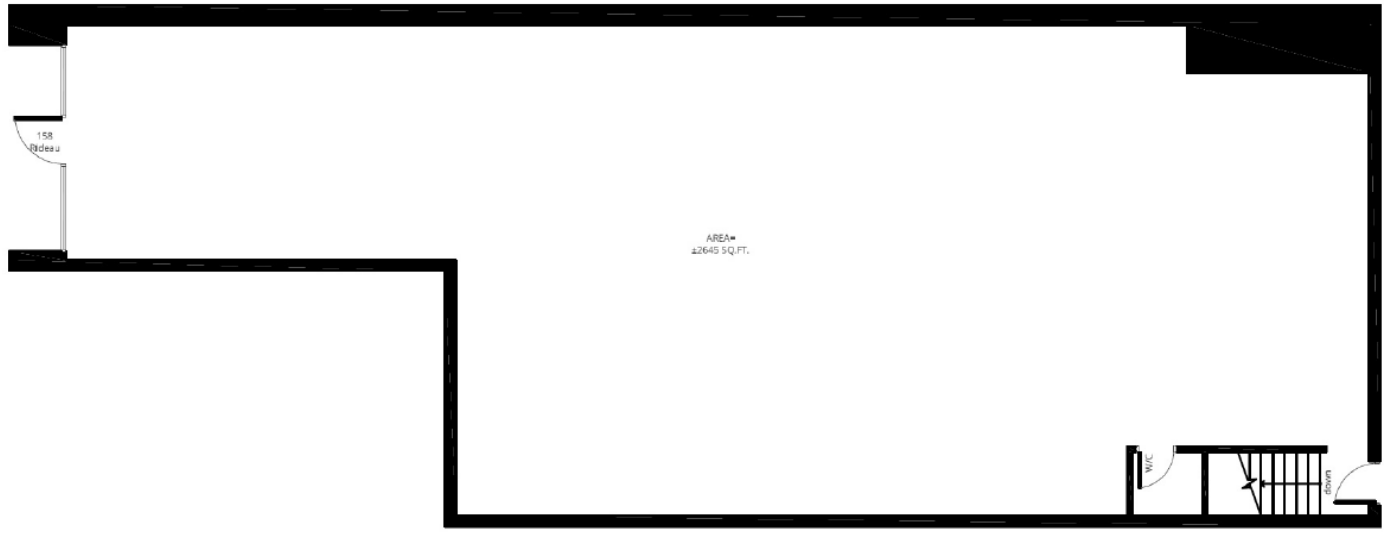


QUINTIN COLAIACOVO
BROKER OF RECORD
(613) 371 1140
quintin@qubeproperties.com

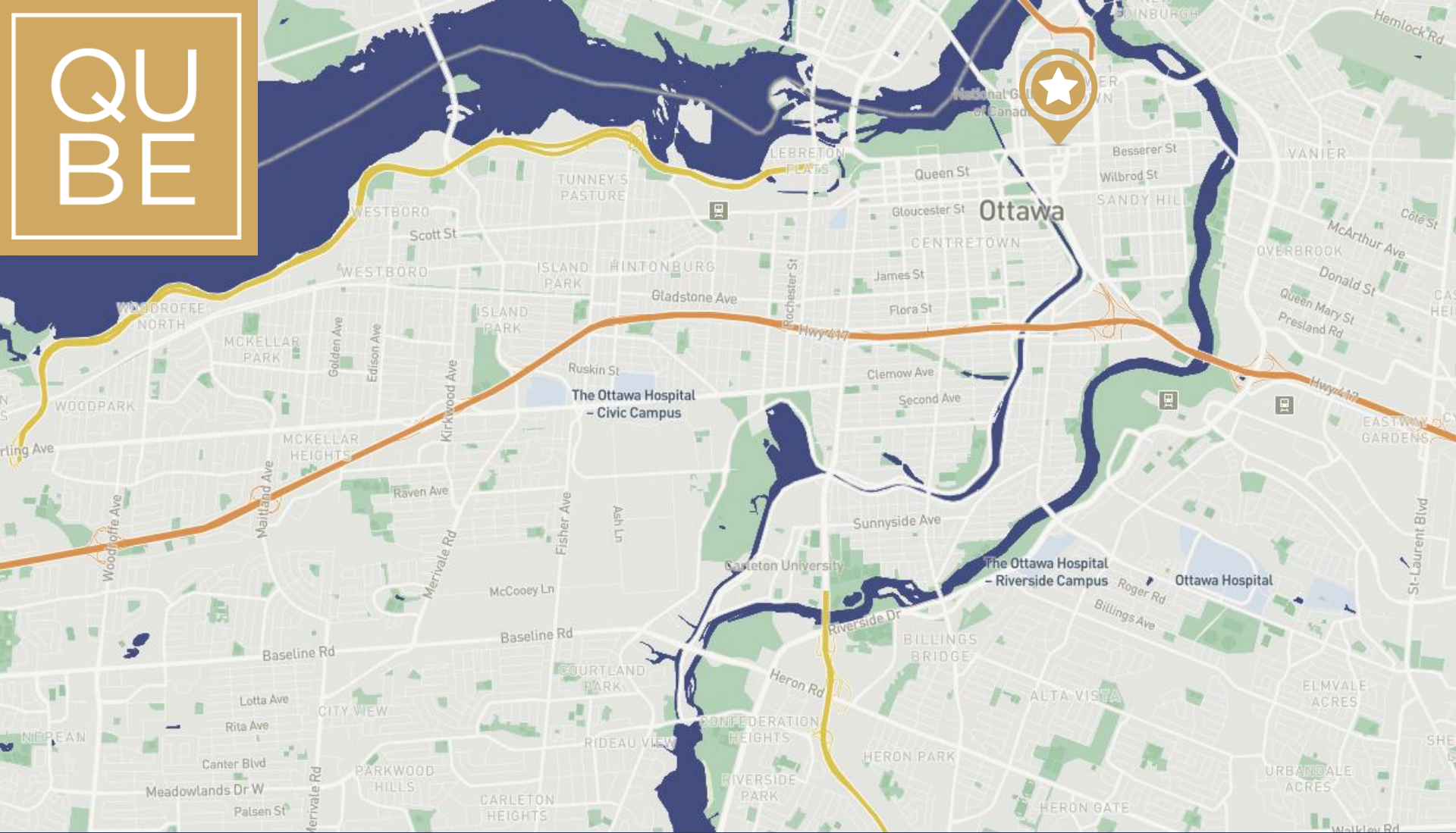
QUBE PROPERTIES LTD.
REAL ESTATE BROKERAGE
255 MICHAEL COWPLAND DRIVE
OTTAWA ON K2M 0M5

QUBE
PROPERTIES

FLOOR PLAN



QUBE



QUINTIN COLAIACOVO

BROKER OF RECORD

(613) 371 1140

quintin@qubeproperties.com

This disclaimer shall apply to Qube Properties Ltd, Real Estate Brokerage, and to all other divisions of the Corporation, to include all employees and independent contractors ("Qube"). The information set out herein, including, without limitation, any projections, images, opinions, assumptions and estimates obtained from third parties (the "Information") has not been verified by Qube, and Qube does not represent, warrant or guarantee the accuracy, correctness and completeness of the Information. Qube does not accept or assume any responsibility or liability, direct or consequential, for the Information or the recipient's reliance upon the Information. The recipient of the Information should take such steps as the recipient may deem necessary to verify the Information prior to placing any reliance upon the Information.

QUBE PROPERTIES

QUBE PROPERTIES LTD.

REAL ESTATE BROKERAGE
255 MICHAEL COWPLAND DRIVE
OTTAWA ON K2M 0M5