

# OFFICE FOR LEASE

*Columbia Square Plaza*

*1001 Columbia Street, New Westminster, B.C.*

**FULL BUILDING OPPORTUNITY: 21,898 SF**

**OFFICE: 3,000 - 13,136 SF**

**GROUND FLOOR: 8,762 SF**

**TENANT IMPROVEMENT ALLOWANCE AVAILABLE**



## **Jack Allpress**

Personal Real Estate Corporation  
Senior Managing Director Investments & Leasing  
(604) 638-1975  
JAllpress@MarcusMillichap.com

## **Claudia Claasen**

Director Investments & Leasing  
(604) 834-6680  
Claudia.Claasen@MarcusMillichap.com

## **Robert Hamilton**

Senior Director Investments & Leasing  
(604) 398-2773  
RHamilton@MarcusMillichap.com

**Marcus & Millichap**

# OFFICE FOR LEASE

## Columbia Square Plaza

1001 Columbia Street, New Westminster, B.C.

## DEVELOPMENT

Opportunity to lease premium office space in the heart of Downtown New Westminster, with the added flexibility of a full-building opportunity. The property offers two contiguous office floors on the 2nd and 3rd levels, totaling 13,136 SF, with flexible demising options starting from approximately 3,000 SF. The 2nd floor and 3rd floor have windows on all sides allowing for exceptional natural light, and elevator access directly from both the main entrance and underground parkade. The 3rd floor is further enhanced by private balconies. Ground floor retail availability offers the unique ability to secure a full-building presence, with direct frontage onto Columbia Street, just steps away from New West SkyTrain Station.

## SALIENT DETAILS

**Size:** 2nd Floor: ~3,000 - 7,032 SF  
3rd Floor: 6,104 SF  
Retail: 8,762 SF  
Total: 21,898 SF

**Timing:** Immediate

**Net Rent:** Contact Listing Agents

**Additional Rent:** \$19.10 PSF (2026 est.)

**Parking:** Over 60 underground stalls + surface stalls



# OFFICE FOR LEASE

*Columbia Square Plaza*

*1001 Columbia Street, New Westminster, B.C.*

## HIGHLIGHTS



Services a population of 96,785 people within a 3km radius, projected to grow another 6.2% by 2025



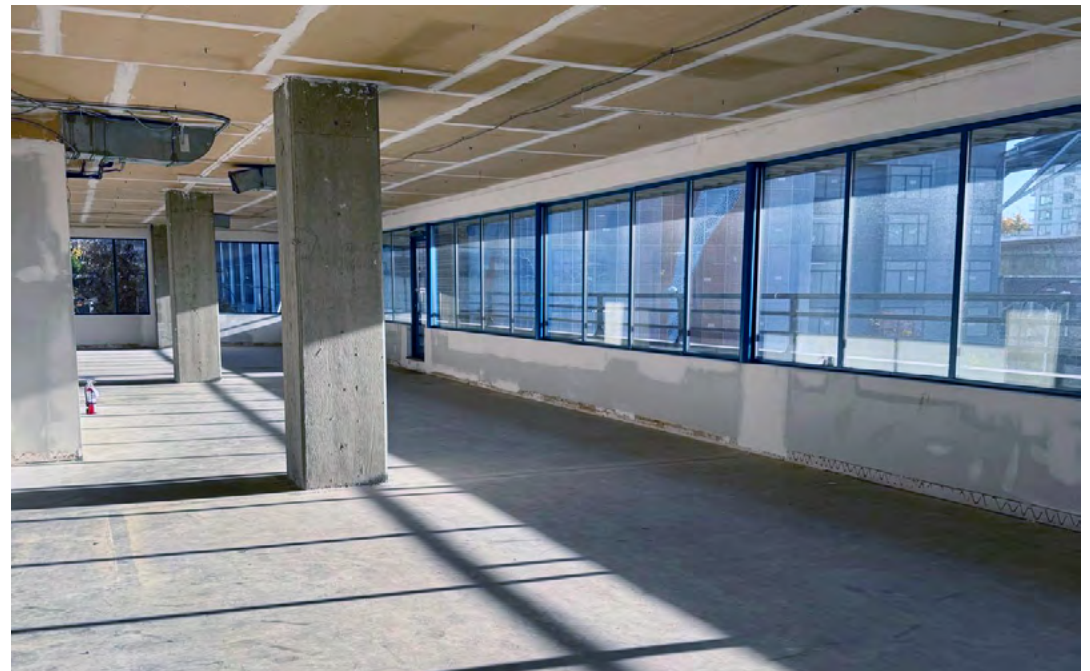
1,027 feet of frontage along Columbia Street, with total daily traffic counts over 40,000



High visibility along Columbia Street



High growth, under-served area of New Westminster



# OFFICE FOR LEASE

Columbia Square Plaza  
1001 Columbia Street, New Westminster, B.C.

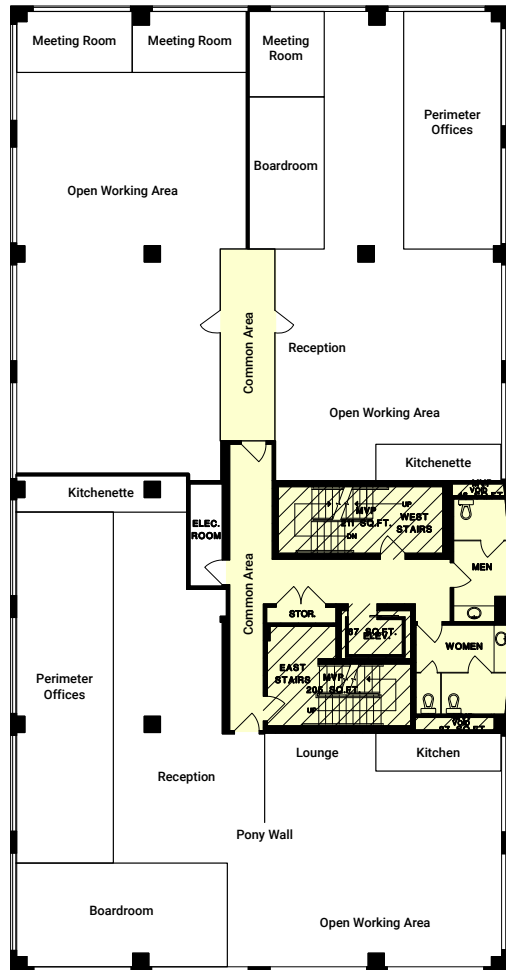
## SITE PLAN



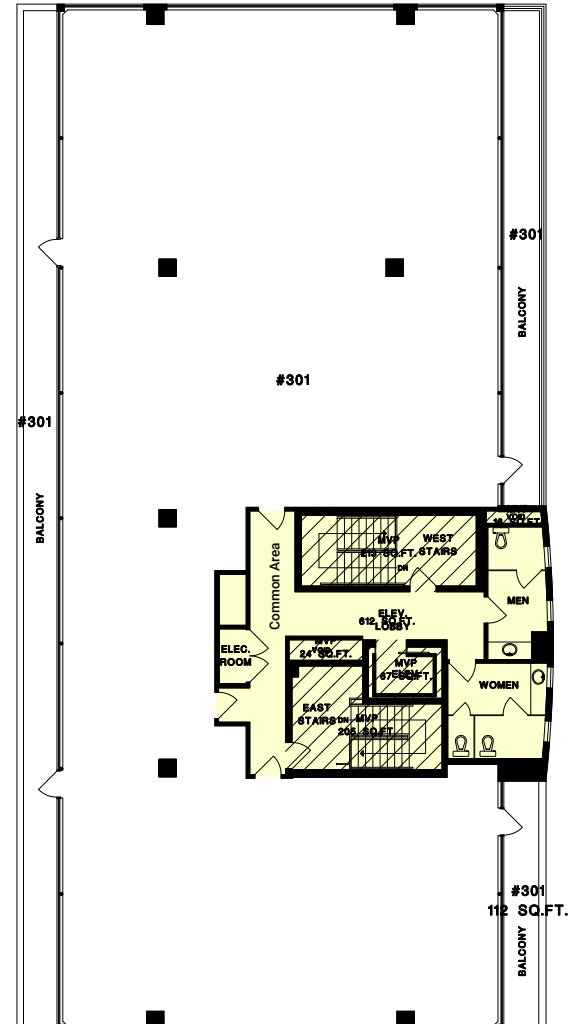
# OFFICE FOR LEASE

Columbia Square Plaza  
1001 Columbia Street, New Westminster, B.C.

## 2ND FLOOR - POTENTIAL DEMISING / TEST FIT



## 3RD FLOOR



# OFFICE FOR LEASE

Columbia Square Plaza  
1001 Columbia Street, New Westminster, B.C.

## AREA DEMOGRAPHICS

2024 Demographics	1 KM	3 KM	5 KM
Average Household Income	\$105,223	\$117,509	\$118,256
Total Population	2024 - 27,770 2029 - 32,866	2024 - 106,953 2029 - 118,110	2024 - 255,783 2029 - 276,660
Total Households	2024 - 13,394 2029 - 15,680	2024 - 41,783 2029 - 45,993	2024 - 91,217 2029 - 98,282
Population Growth 2024-2029	18.40%	10.40%	8.20%



# Marcus & Millichap

---

1100 - 1111 West Georgia Street  
Vancouver, BC V6E 4M3

T (604) 638-2121  
F (604) 638-2122

[MarcusMillichap.ca](http://MarcusMillichap.ca)

The information contained in this Marketing Brochure is proprietary and strictly confidential. It is intended to be reviewed only by the party receiving it from Marcus & Millichap and should not be made available to any other person or entity without the written consent of Marcus & Millichap. This Marketing Brochure has been prepared to provide summary, unverified information to prospective purchasers, and to establish only a preliminary level of interest in the subject property. The information contained herein is not a substitute for a thorough due diligence investigation. Marcus & Millichap has not made any investigation, and makes no warranty or representation, with respect to the income or expenses for the subject property, the future projected financial performance of the property, the size and square footage of the property and improvements, the presence or absence of contaminating substances, PCB's or asbestos, the compliance with State and Federal regulations, the physical condition of the improvements thereon, or the financial condition or business prospects of any tenant, or any tenant's plans or intentions to continue its occupancy of the subject property. The information contained in this Marketing Brochure has been obtained from sources we believe to be reliable; however, Marcus & Millichap has not verified, and will not verify, any of the information contained herein, nor has Marcus & Millichap conducted any investigation regarding these matters and makes no warranty or representation whatsoever regarding the accuracy or completeness of the information provided. All potential buyers must take appropriate measures to verify all of the information set forth herein.

Marcus & Millichap is not affiliated with, sponsored by, or endorsed by any commercial tenant or lessee identified in this marketing package. The presence of any corporation's logo or name is not intended to indicate or imply affiliation with, or sponsorship or endorsement by, said corporation of Marcus & Millichap, its affiliates or subsidiaries, or any agent, product, service, or commercial listing of Marcus & Millichap, and is solely included for the purpose of providing tenant lessee information about this listing to prospective customers.

This information has been secured from sources we believe to be reliable, but we make no representations or warranties, express or implied, as to the accuracy of the information. References to square footage or age are approximate. Buyer must verify the information and bears all risk for any inaccuracies. Marcus & Millichap is a trademark of Marcus & Millichap Real Estate Investment Services, Inc. Used under license by Marcus & Millichap Real Estate Investment Services Canada Inc. © 2026 Marcus & Millichap. All rights reserved.