

crestwood | CO — work



Metro Vancouver's
Most Affordable
Co-working Space

Peterson



Affordable space.
Unlimited potential.

co-work at Crestwood

Presenting **Metro Vancouver's most affordable co-working space** in the heart of a world-class business campus.

Located in Crestwood Corporate Centre in **Richmond, BC**, **co-work** offers **over 17,000 sq. ft.** of dedicated space. From individual offices and meeting rooms to open-concept workstations, **essential amenities** and more, **co-work** has been designed to fit your business needs, **and your budget.**

Quick Stats

LOCATION	Richmond, BC
SITE AREA	37 Acres
PARKING	+2,100
BUILDINGS	9
ZONING	IB1
CLASS	A to AAA



High-quality workspaces at the lowest price.

collaborate
+ connect

With a **minimum commitment of 3 months** to lease at Crestwood **co-work**, we are pleased to offer **preferred tenant discounts** to those who sign on longer.

savings

5%

SAVINGS WHEN YOU SIGN ON FOR **6 MONTHS**

10%

SAVINGS WHEN YOU SIGN ON FOR **12 MONTHS**

15%

SAVINGS WHEN YOU SIGN ON FOR **18 MONTHS**

co-work Price Structure

Office Type	Rate
CO-WORK DESK <small>3 MONTH MINIMUM</small>	
Dedicated	\$188.88/mth
NO WINDOW <small>3 MONTH MINIMUM</small>	
Single	\$688.88/mth
Double	\$988.88/mth
WINDOW <small>3 MONTH MINIMUM</small>	
Single	\$888.88/mth
Double	\$1,188.88/mth
Executive	\$2,088.88/mth
MEETING ROOMS	
Small	\$20/hr
Executive	\$40/hr
Conference	\$80/hr
STORAGE <small>3 MONTH MINIMUM</small>	
Standard	\$250/mth

Pricing Comparison

OFFICE TYPE	CRESTWOOD CO-WORK	AVERAGE MARKET PRICE
Dedicated Desk	\$188.88/mth	From \$350/mth
Private Office (No Window)	\$688.88/mth	From \$795/mth
Private Office (Window)	From \$888.88/mth	From \$1,200/mth (size-dependent)
Meeting Room	\$20/hr	\$35/hr
Conference Room	\$80/hr	\$120/hr

tenants



Be in Good Company

At Crestwood business campus, call **over 40 A-Tier businesses** your neighbours, and benefit from the tenants and visitors they bring together from around the world.

The Tenants

BUILDING 1

- MDA

BUILDING 2

- Andritz
- CEFA
- IFS
- ACML
- CNFP
- Coastal Plastic Surgery

BUILDING 3

- CSF
- Virogin

BUILDING 4

- Cooledge
- Rivian
- Quectel Wireless

BUILDING 5

- ICBC
- Mainstream
- Kids Physio Group
- Sonata Software
- Boston Pizza
- Peterson

BUILDING 6

- Boeing
- Couver Financial
- Richmond Clinical Trials
- Manulife
- Rothwood Academy
- Swiftlink

BUILDING 7

- CEFA
- CEU
- Schroeder Rashid LLP
- Ellisdon
- Pinchin

BUILDING 8

- CBE Law
- Dragados
- Fedex Trade
- Bird Construction
- Opto Automation
- Wenco

BUILDING 10

- Discover Energy Systems
- Broadcom

perks

3

DAYCARES

2.2

KMS OF OUTDOOR
RUNNING TRAIL +
OUTDOOR FITNESS
EQUIPMENT

15

EV CHARGING STATIONS

2

DEDICATED
SHUTTLE BUSES

1

EXTENSIVE DOG PARK
– COMING SOON

19

PRIVATE BIKE LOCKERS

1

FOOD TRUCK EVERY
DAY ON WEEKDAYS
(MONDAY–FRIDAY)



Shuttle Bus

Morning & Afternoon Rush:
2 shuttle buses to and from
Bridgeport Canada Line Station

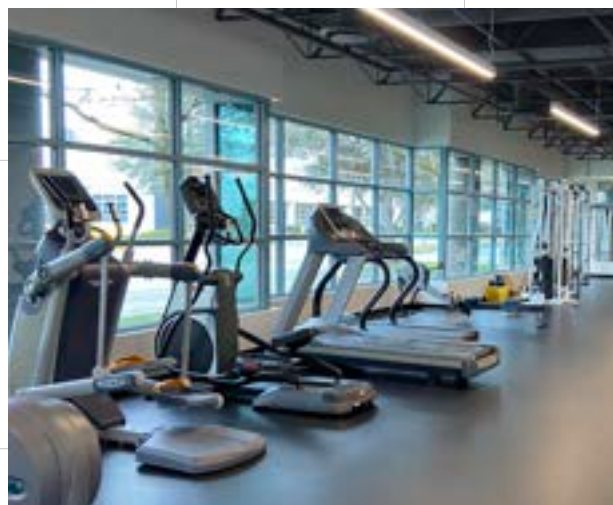
Afternoon:
1 shuttle bus to and
from Richmond Centre



Daily Food Truck

A food truck is available on-site at the
Building 5 parking lot on weekdays.

Monday – Friday
11:30 am – 2:30 pm.



Fitness Centre

Full fitness studio with equipment.
Yoga and stretch classes are
available on regular schedules.

Monday – Friday
6:00 am – 8:00pm



Dog-friendly

Bring your furry friend to the
pet-friendly office space. A
dedicated dog park is located
North of Building 7 and waste
stations are located around
the property.



Co-working Amenities and Conveniences

co-work offers access to Crestwood's **high-quality amenities**, including dedicated tenant shuttles, which runs to and from Bridgeport Canada Line station and Richmond Centre multiple times per day, a fitness centre, three daycares, private bike lockers, and end-of-trip facilities.

Just steps from the building you'll also find EV charging stations, daily onsite food trucks, jogging trails, dog parks and more.

All 9 of our buildings have achieved BOMA Silver and 1 building as achieved **LEED Gold certification**. As part of our continued commitment to sustainability and energy efficiency, Crestwood boasts **15 electric vehicle charging stations** to accommodate up to 30 electric vehicles.



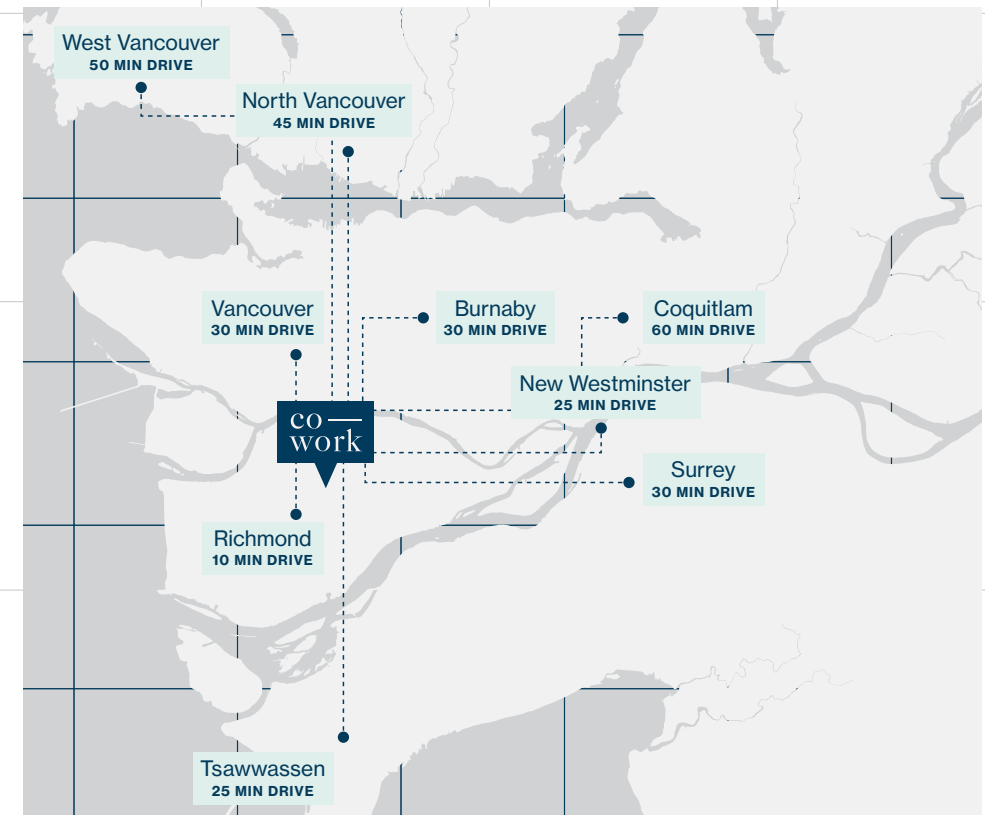
location



Accessible, in All Ways

Crestwood **co-work** is **conveniently located** off the high-profile intersection of Knight Street and Westminster Highway, bordered by major thoroughfares with **easy access** to Delta, Surrey, New Westminister, and Vancouver.

The campus also offers a **dedicated shuttle service** to and from the Bridgeport Canada Line Station and Richmond Centre.



travel time

Walking

- Greenacres Golf Course
- Missing Chopsticks
- Apex Gym

5 Min Drive

- Ikea
- Richmond Auto Mall
- Richmond Nature Park

10 Min Drive

- Bridgeport Canada Line Station
- Richmond Hospital
- YVR International Airport
- Richmond Centre
- Costco

20 Min Drive

- Deltaport
- Port of Vancouver
- Tsawwassen Ferry Terminal

amenities



SHUTTLE STOP



FOOD TRUCK LOCATION



FITNESS CENTRE



DOG PARK



DOG WASTE STATIONS



BIKE STORAGE



RUNNING TRAIL



SMALL APPLIANCE RECYCLING



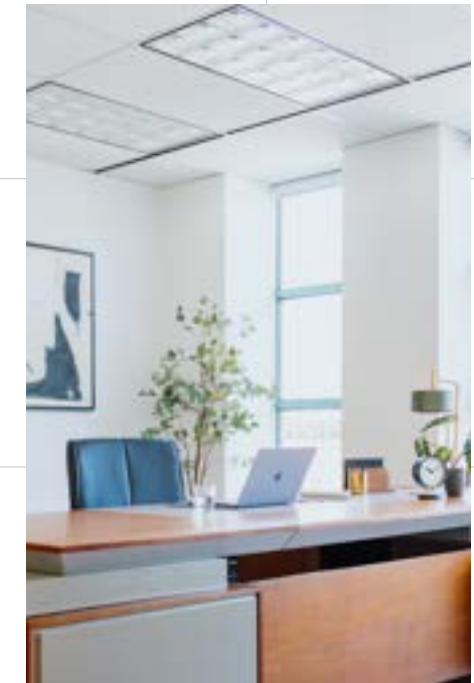
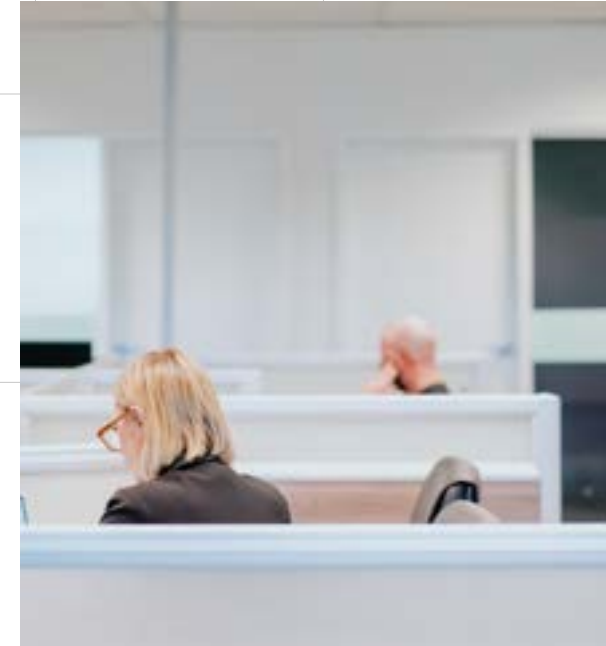
STYROFOAM RECYCLING



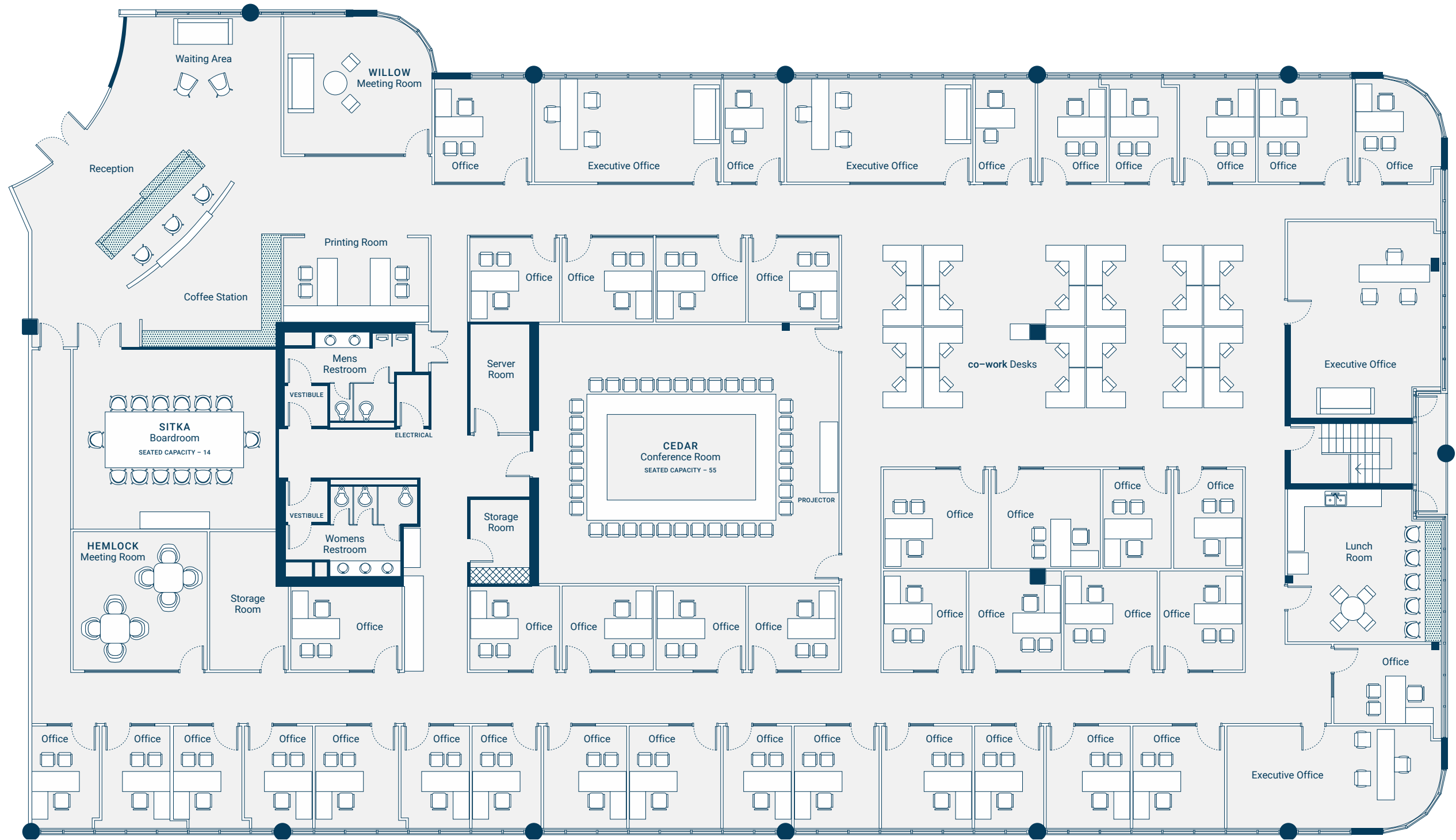
E-WASTE RECYCLING

CO—work

An affordable space with unlimited potential. Crestwood co—work is a workspace designed to work as hard as you do; providing the space you need, at the price you want.



floor plan



Thoughtfully designed to foster **collaboration** and **focus**, while adapting to **your business needs**, Crestwood **co-work** provides **unlimited potential** at an **unmatched price**.

highlights

rent

Flexible and affordable lease options for your growing business

meet

Fully equipped boardroom and large conference space available for booking

refresh

Complimentary water, coffee and tea available at a coffee station and in the lunch room

welcome

Professional reception space at the entrance for the best first impression

security

Space is secured by key fobs, on-site security, and 24-hour access to the space



Fairmont Medical Building, Vancouver BC



Shangri-La Vancouver, Vancouver BC



Woodwards, Vancouver BC



Fairmont Pacific Rim, Vancouver BC

Professionally Managed by Peterson

As workplaces evolve, we strive to create **spaces where people and businesses can thrive** and connect, at a price point they can afford.

Professionally managed by Peterson Commercial, Crestwood Corporate Centre is backed by our strong portfolio and successful history of developing commercial office strategies. With an on-site property management office and building engineers, **co-work** tenants get the benefits of this partnership at no extra cost.

45

YEARS OF BUILDING COMMUNITIES AND FORGING RELATIONSHIPS

7

MILLION SQ. FT. OF COMMERCIAL PROPERTY

2.1

THOUSAND UNITS OF RESIDENTIAL + HOSPITALITY

16.4

MILLION SQ. FT. OF RESIDENTIAL + MULTI-USE DEVELOPMENT

The Space You Need at the Price You Want

To experience Crestwood **co—work**
first-hand, **contact us to book a tour.**

604 343 0546
info@crestwoodcowork.com

crestwood | **CO —
work**