

FIGURE 2A. LOT 2A SHOWING AMENDED LOT LINE

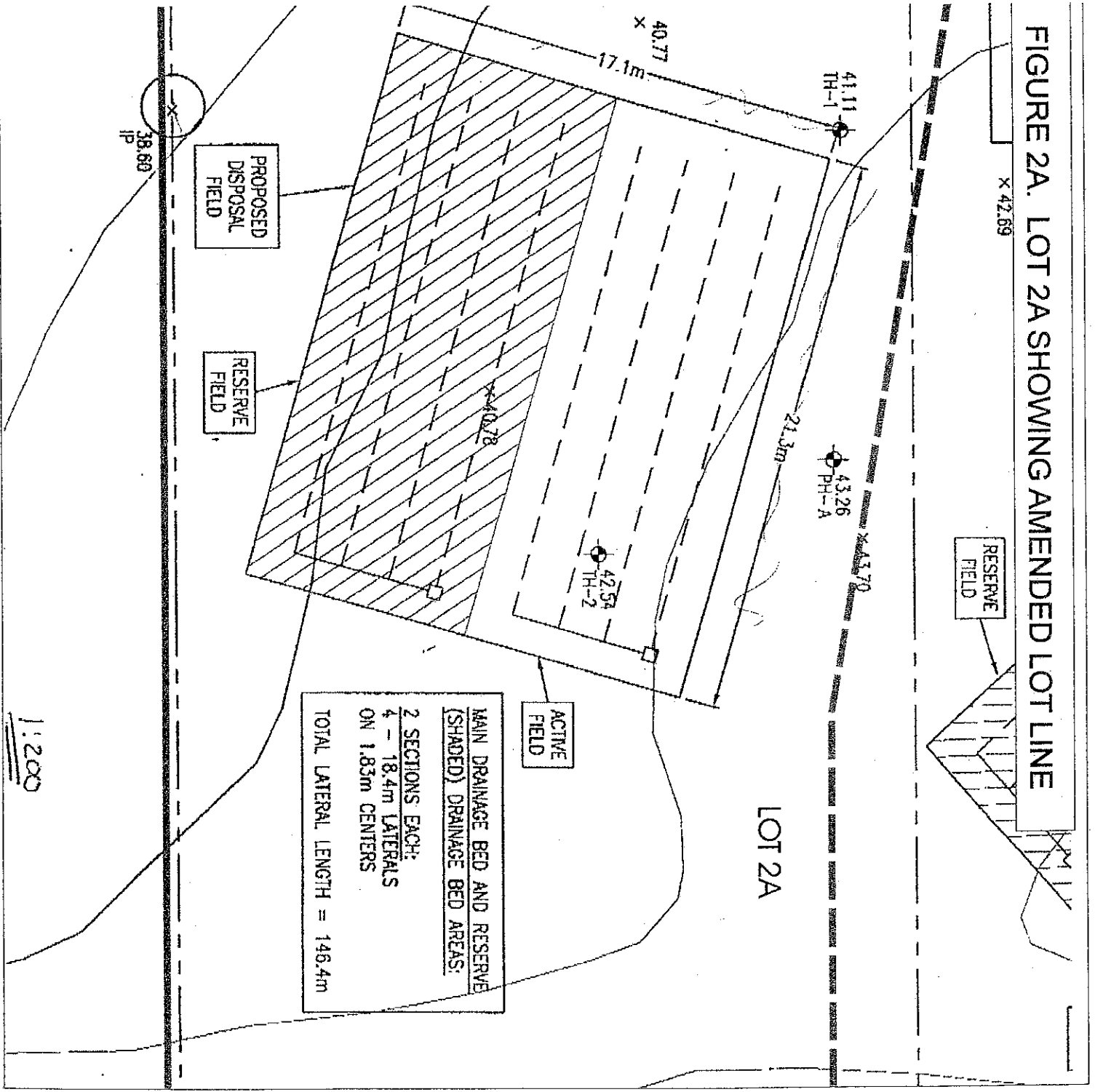
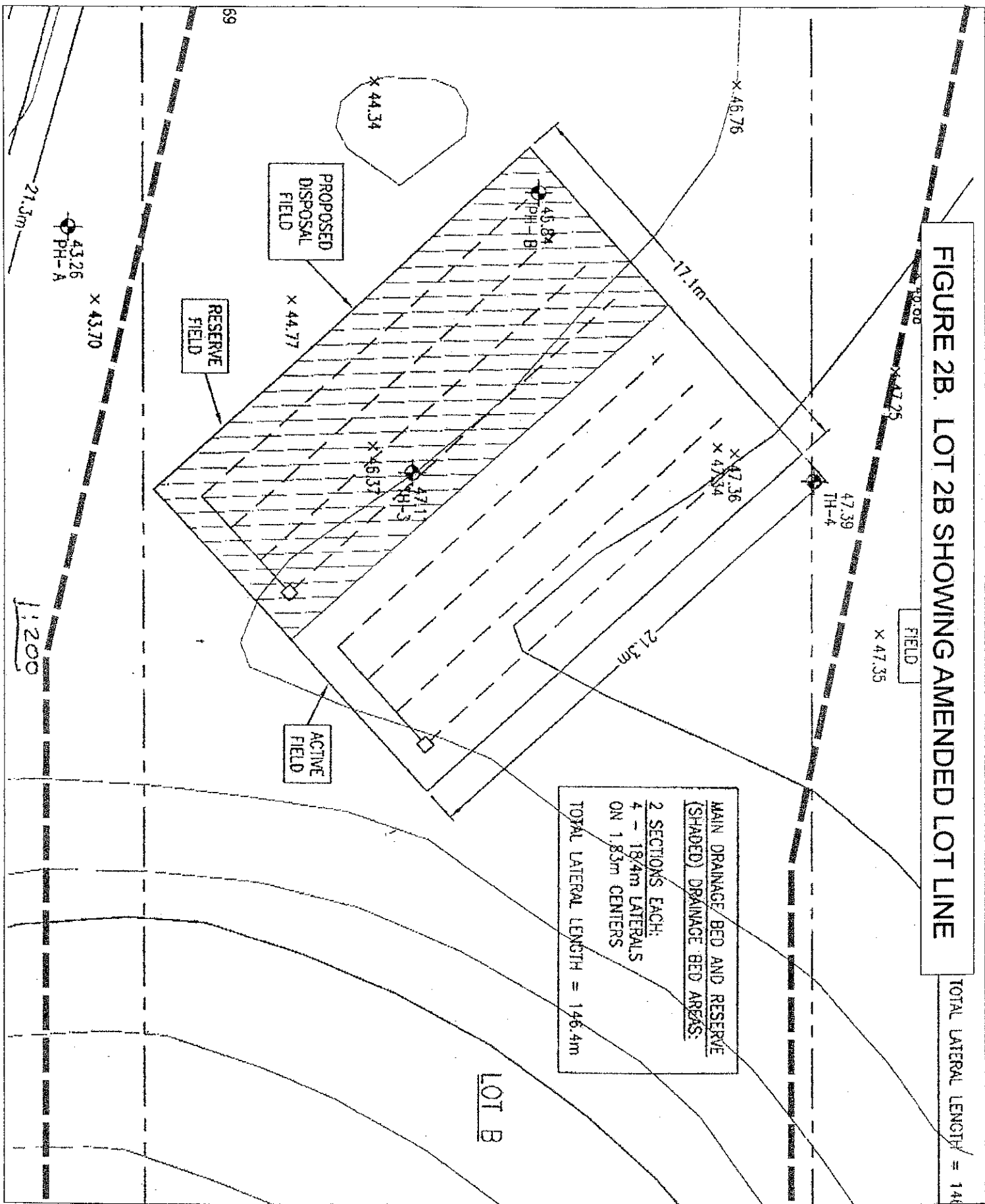


FIGURE 2B. LOT 2B SHOWING AMENDED LOT LINE



MAIN DRAINAGE/ BED AND RESERVE
(SHADED) DRAINAGE/ BED AREAS:
2 SECTIONS EACH;
4 - 18/4m LATERALS
ON 1.83m CENTERS
TOTAL LATERAL LENGTH = 146.4m

FIELD

TOTAL LATERAL LENGTH = 146

LOT B

PROPOSED
DISPOSAL
FIELD

RESERVE
FIELD

ACTIVE
FIELD

PH-A

PH-B

TH-4

69

21.3m

x 43.70

1:200

x 44.34

x 46.76

17.1m

x 44.77

x 46.37

x 47.36

x 47.34

21.3m

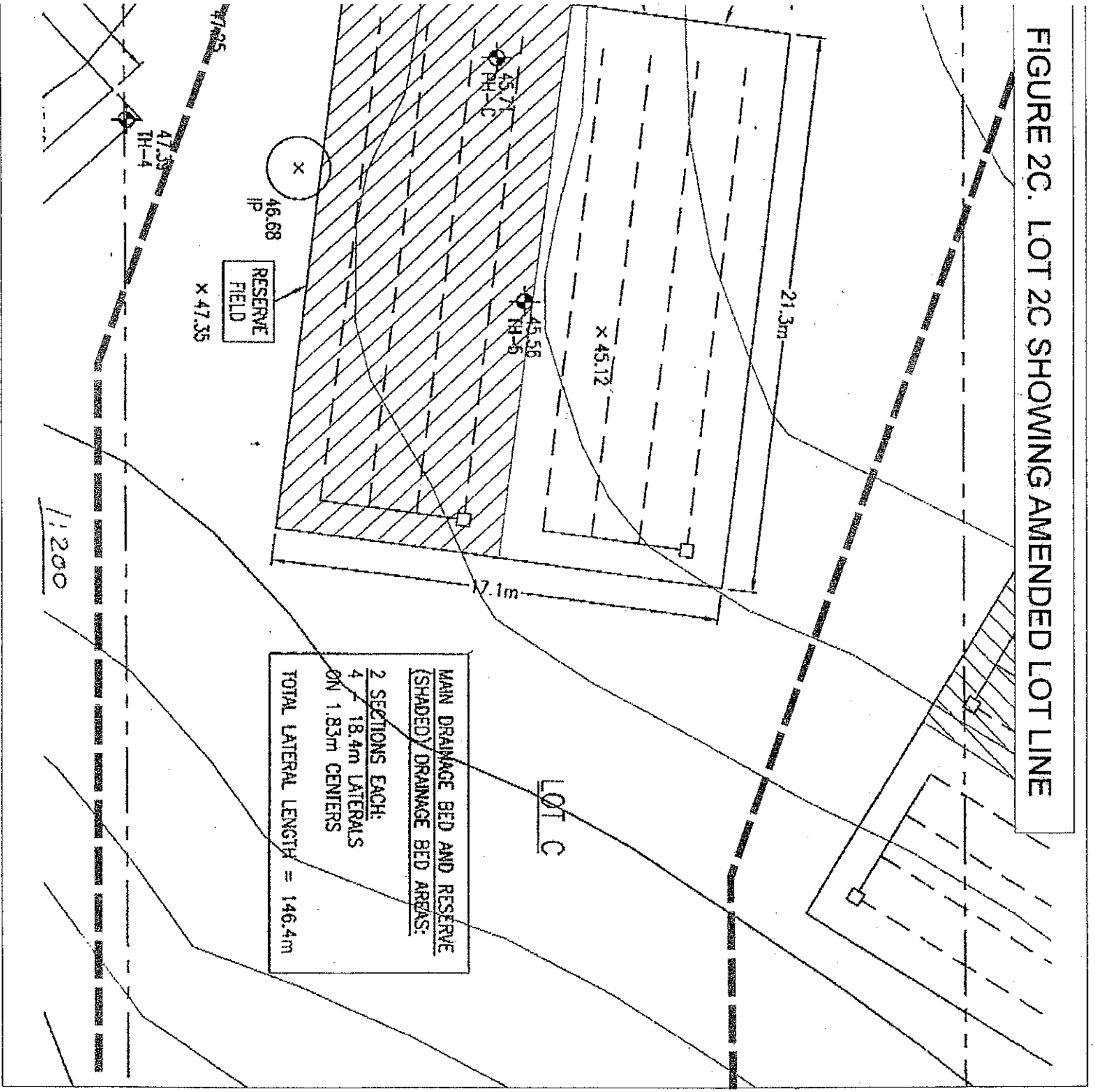
x 47.35

10.00

x 47.75

LOT B

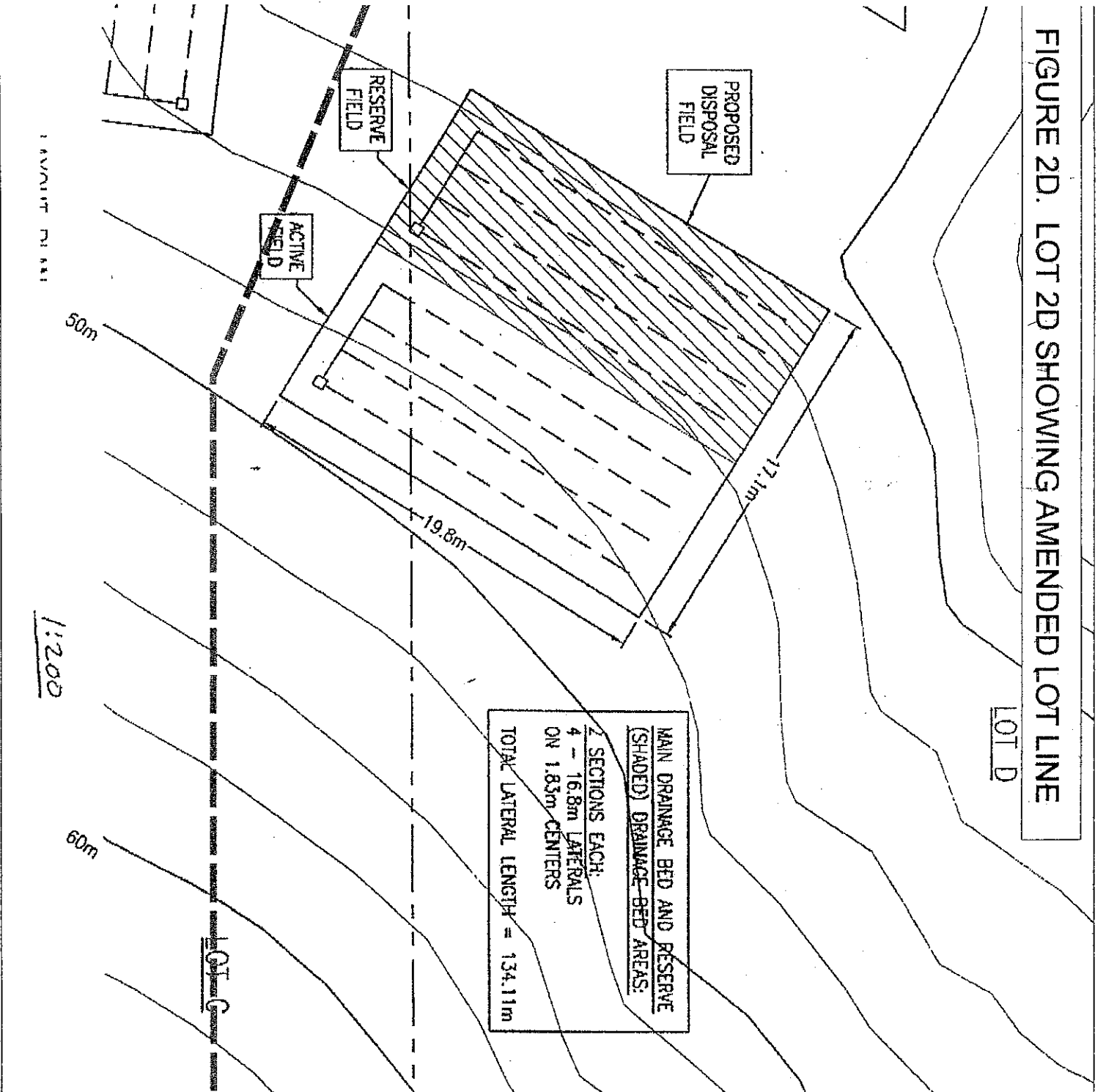
FIGURE 2C. LOT 2C SHOWING AMENDED LOT LINE



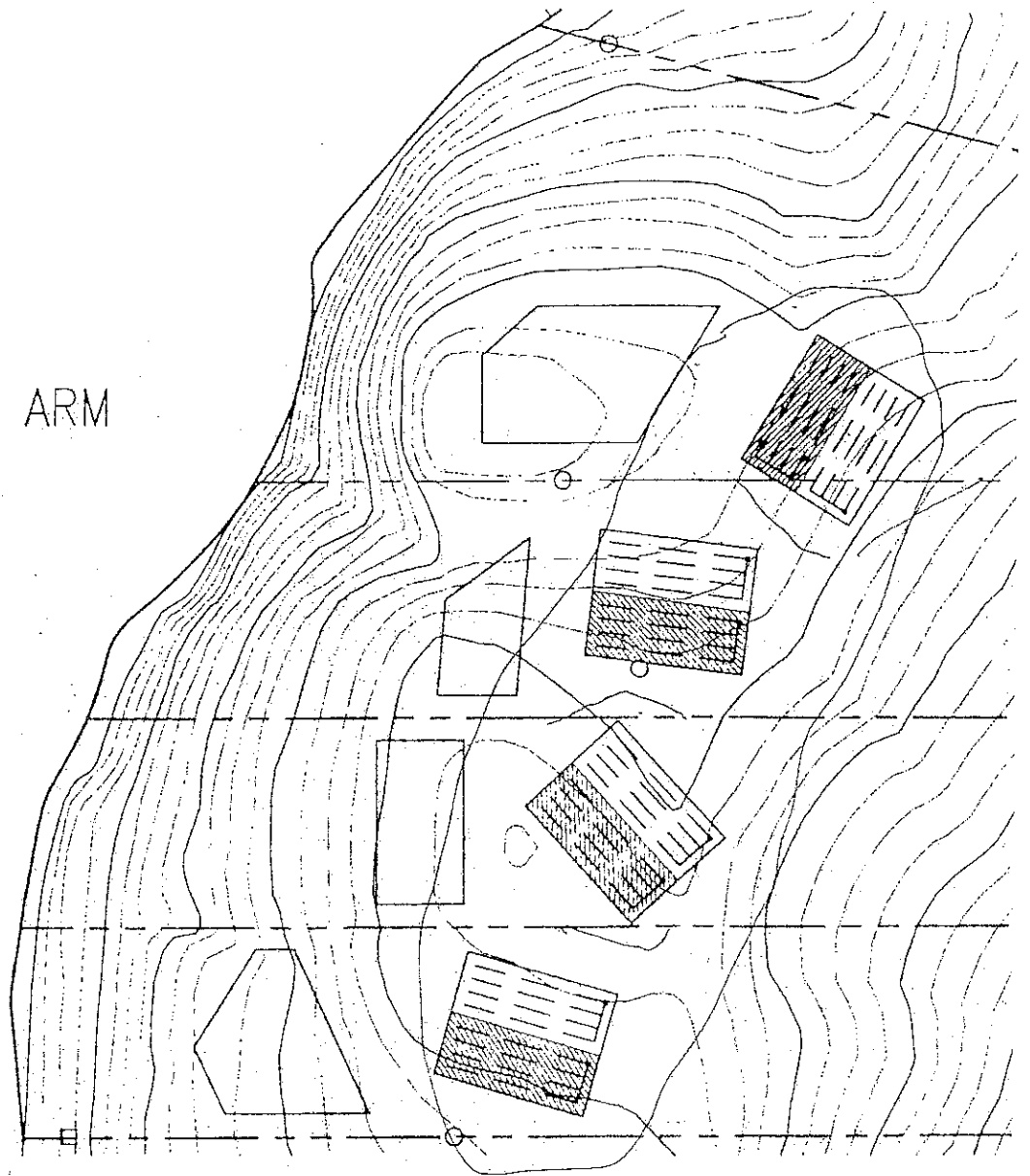
MAIN DRAINAGE BED AND RESERVE
 (SHADED) DRAINAGE BED AREAS:
 2 SECTIONS EACH:
 4 x 18.4m LATERALS
 ON 1.83m CENTERS
 TOTAL LATERAL LENGTH = 146.4m

LOT C

FIGURE 2D. LOT 2D SHOWING AMENDED LOT LINE

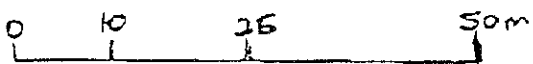
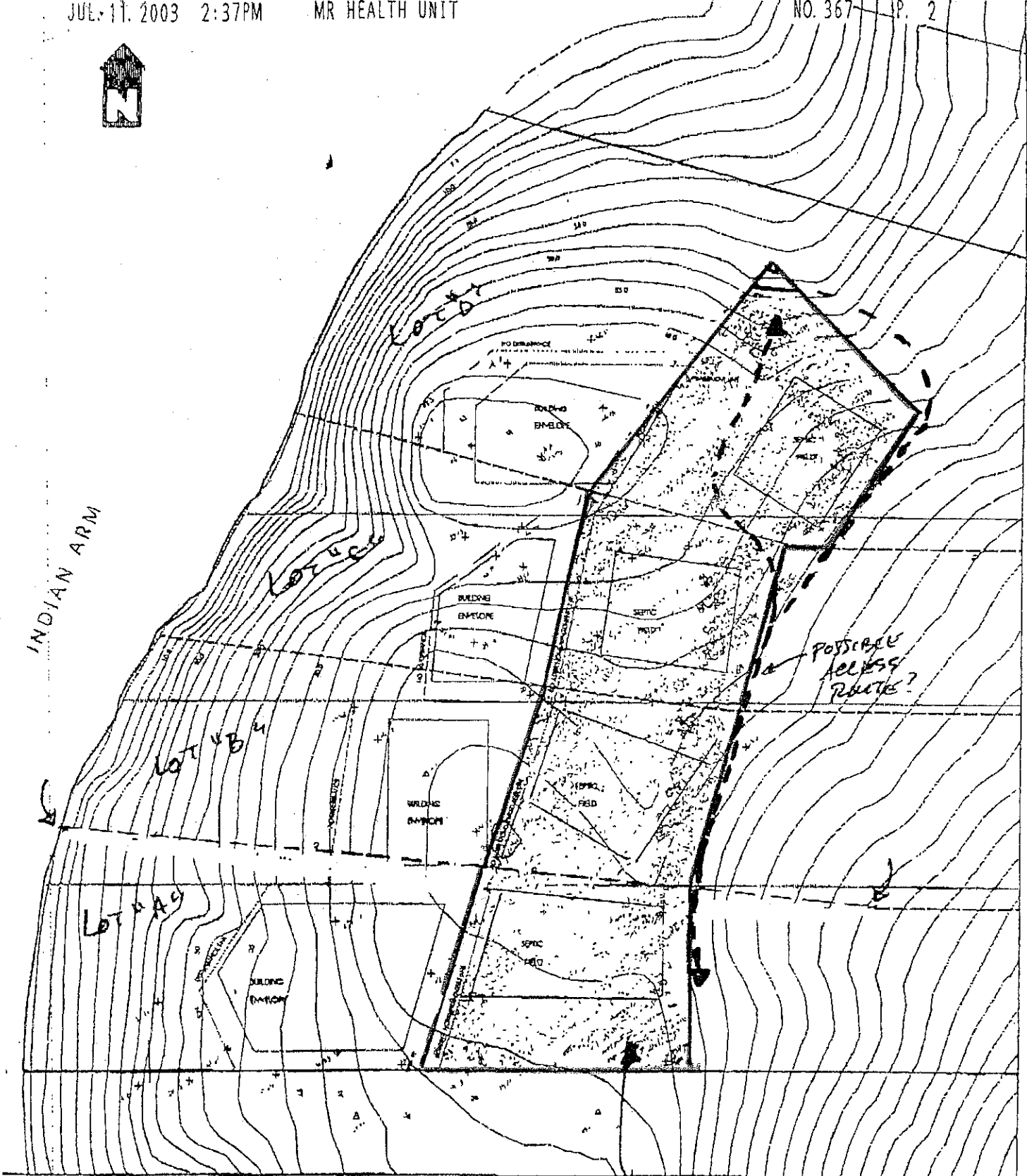


INDIAN ARM

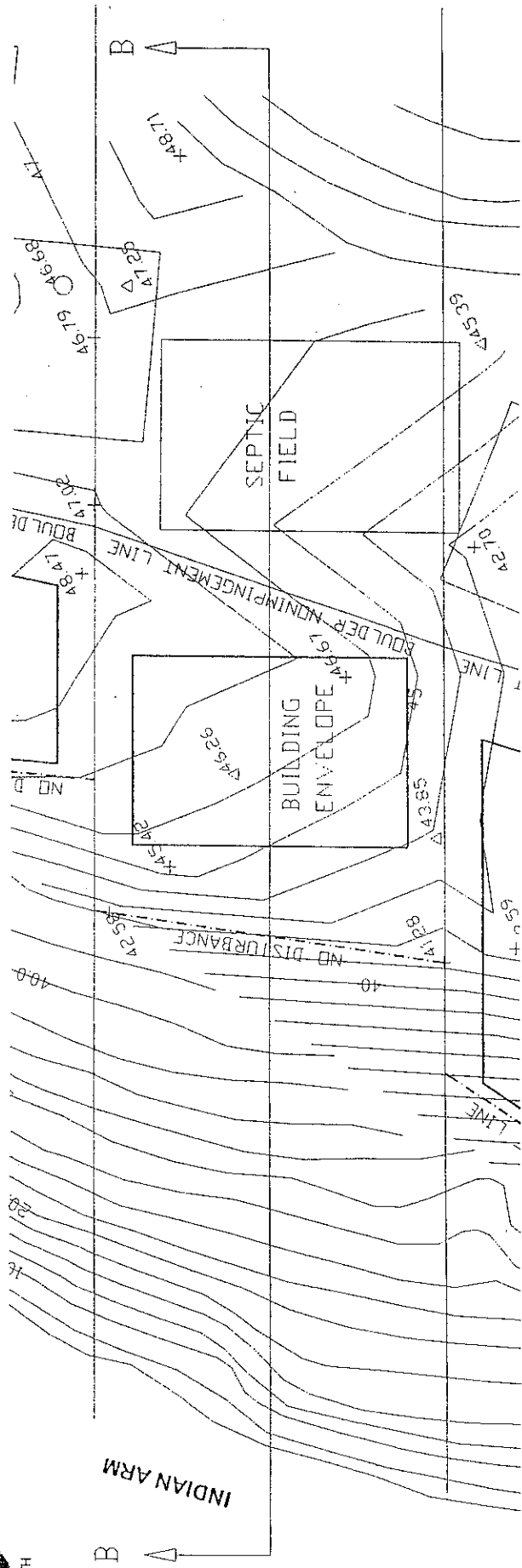




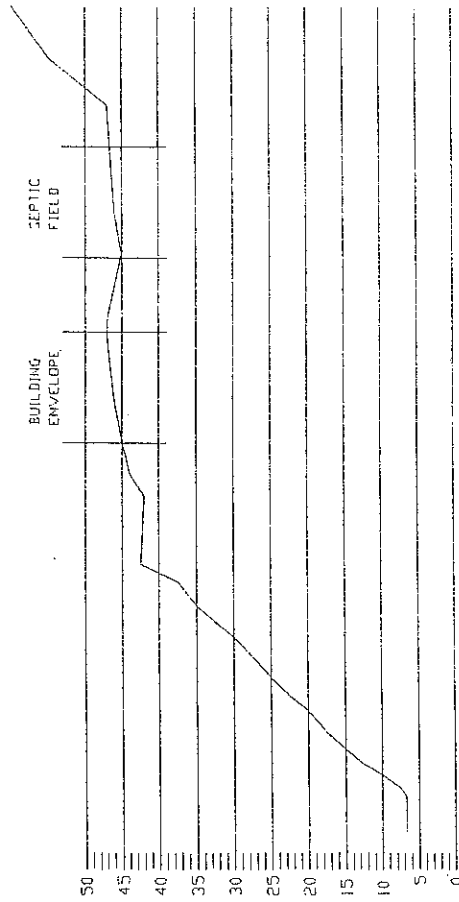
INDIAN ARM



SHADED AREA DENOTES
S. 219 RC OVER ALL
FOUR LOTS.



LOT B SITE PLAN
SCALE 1:250



SECTION B-B
SCALE 1:500



These drawings remain the property of TROOK ENGINEERING INC. Original written consent is required for reproduction or distribution of these drawings, drawings or parts thereof. No part of these drawings may be reproduced, stored in a retrieval system, or transmitted in any form or by any means, electronic, mechanical, photocopying, recording, or by any information storage and retrieval system, without the prior written permission of TROOK ENGINEERING INC.

DATE	AS SHOWN	REVISED	BY	NO.

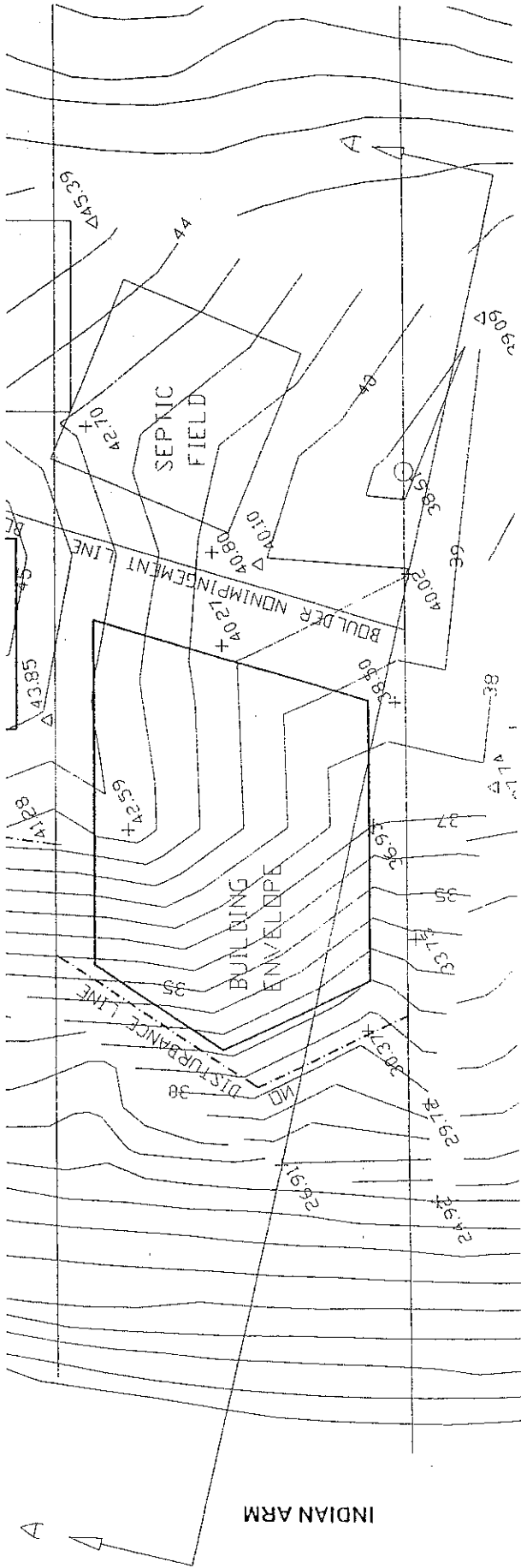
TROOK Engineering Inc.
 5445 - 105th Street, Burnaby, BC Canada V0B 0B0
 Tel: 604-270-1801 e. Fax: 604-270-2001

Mr. Carl von Einstedel
 LOT 3 AND 4 LOT SUBDIVISION OF LOT 2
 NORTH OF VILLAGE OF BELCARRA
 EAST SHORE OF INDIAN ARM, B.C.

LOT B - GEOTECHNICAL SITE EVALUATION			
DATE	AS SHOWN	REVISED	BY

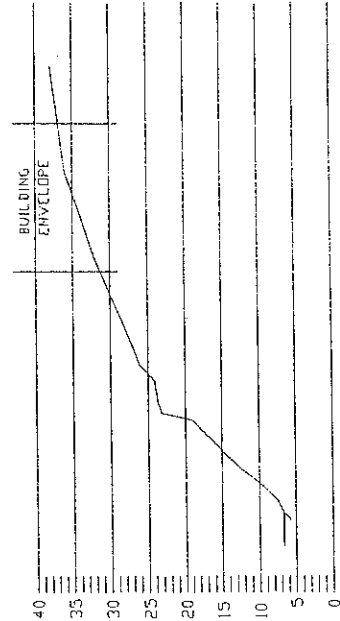
PROJECT NO. 2002
 SHEET NO. 3
 8897

VISIT US AT: www.trookeng.com



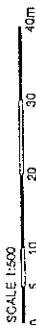
LOT A SITE PLAN

SCALE 1:250



SECTION A-A

SCALE 1:500



These drawings are the property of TOOK Engineering Inc. Other parties are prohibited from using or reproducing these drawings without the written consent of TOOK Engineering Inc. All rights reserved. TOOK Engineering Inc. is not responsible for any errors or omissions in these drawings. Please contact TOOK Engineering Inc. for more information regarding construction.

TOOK Engineering Inc.
 1000 Highway 100, Suite 100, North York, ON M2H 3P2
 Tel: 416-291-6551 • Fax: 416-291-2381

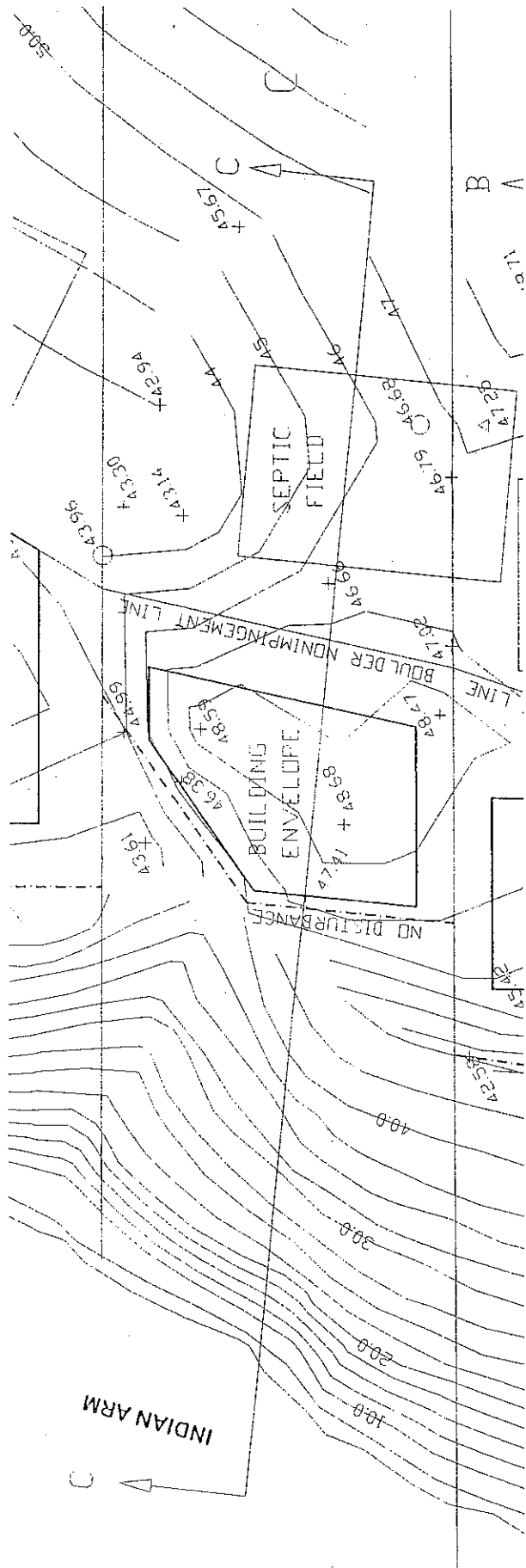
Mr. Carl von Hinstedel

LOT 3 AND 4 LOT SUBDIVISION OF LOT 2
 NORTH OF VILLAGE OF BELCARA
 EAST SHORE OF INDIAN ARM, B.C.

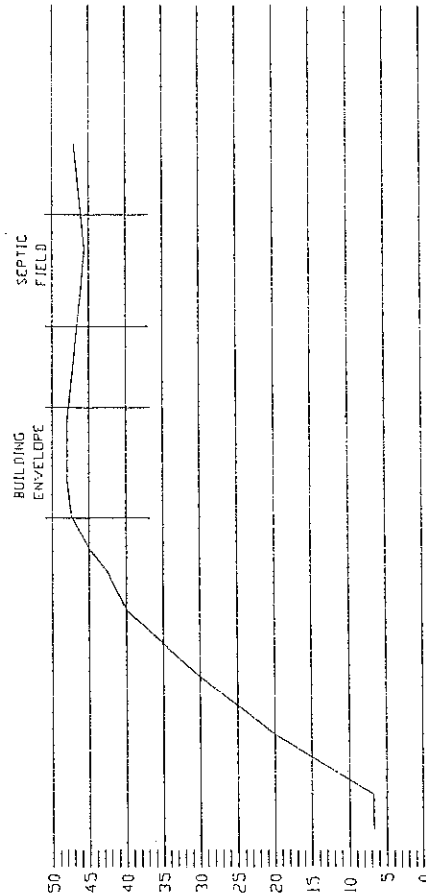
LOT A - GEOTECHNICAL SITE EVALUATION

DATE	28 DEC 2011	ISSUE	001	NO. OF SHEETS	2	SHEET NO.	8897
BY	CSM	DATE	18 DEC 2011	PROJECT			

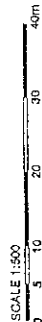
visit us at: www.tookeg.com



LOT C SITE PLAN
SCALE 1:250



SECTION C-C
SCALE 1:500



These drawings remain the property of TOOK Engineering Inc. or any other party who may acquire them. They are not to be used for any other purpose without the written consent of TOOK Engineering Inc. or any other party who may acquire them. TOOK Engineering Inc. is not responsible for any errors or omissions in these drawings. TOOK Engineering Inc. is not responsible for any errors or omissions in these drawings. TOOK Engineering Inc. is not responsible for any errors or omissions in these drawings.

TOOK Engineering Inc
2435 - 160 St Street, Surrey, BC Canada, V4S 8R8
Tel: 604-576-8891 Fax: 604-576-2596

Mr. Carl von Einsiedel

LOT 3 AND 4 LOT SUBDIVISION OF LOT 2
NORTH OF VILLAGE OF BELCARRA
EAST SHORE OF INDIAN ARM, B.C.

LOT C - GEOTECHNICAL SITE EVALUATION

DATE:	AS SHOWN	DATE:	AS SHOWN	NO. OF SHEETS:	4	TOTAL SHEETS:	4
BY:	CEM	CHECKED:	CEM	PROJECT NO.:	8897		
DATE:	18, 2003						

VISIT US AT: www.tookeng.com

