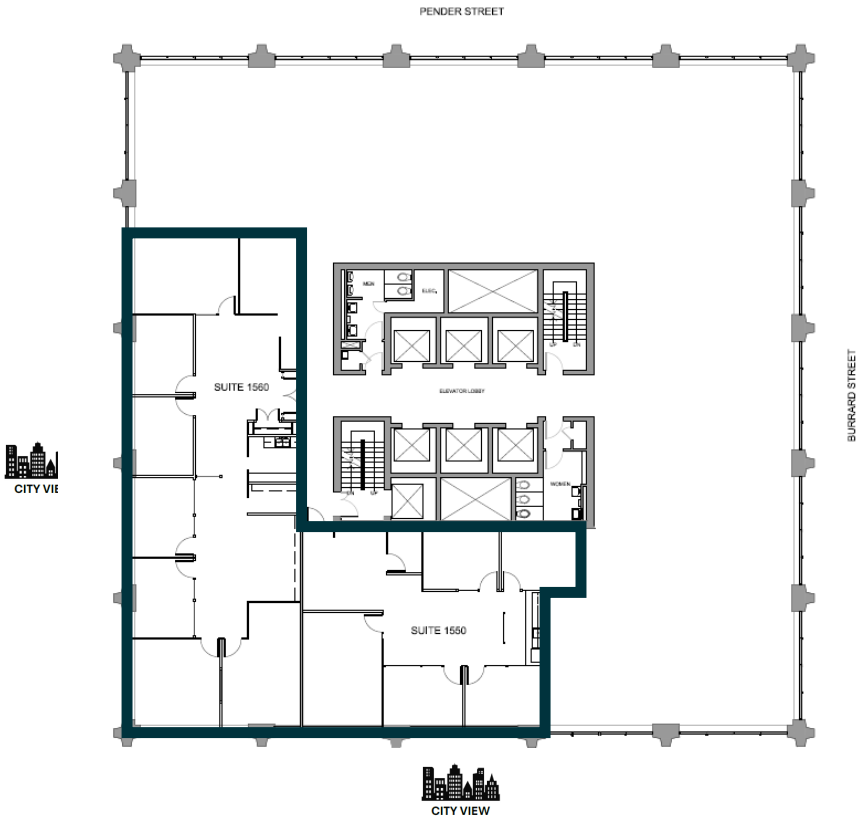


# ONE BENTALL CENTRE - 505 BURRARD STREET

SUITE	APPROXIMATE SF	SPACE DESCRIPTION
1550 & 1560	4,931 SF	West facing premises with elevator exposure. Improved with reception area, 11 offices/meeting rooms, open work areas, kitchen, copy room and storage room. Available July 2026.



OPERATING EXPENSES & PROPERTY TAXES (2026 BUDGET): \$28.50/ SF

For leasing information, contact:

**DAVID HAUGEN**  
+1 778 328 5964

DHAUGEN@HUDSONPPI.COM

**NIKO CLIRONOMOS**  
+1 604 306 2126

NCLIRONOMOS@HUDSONPPI.COM