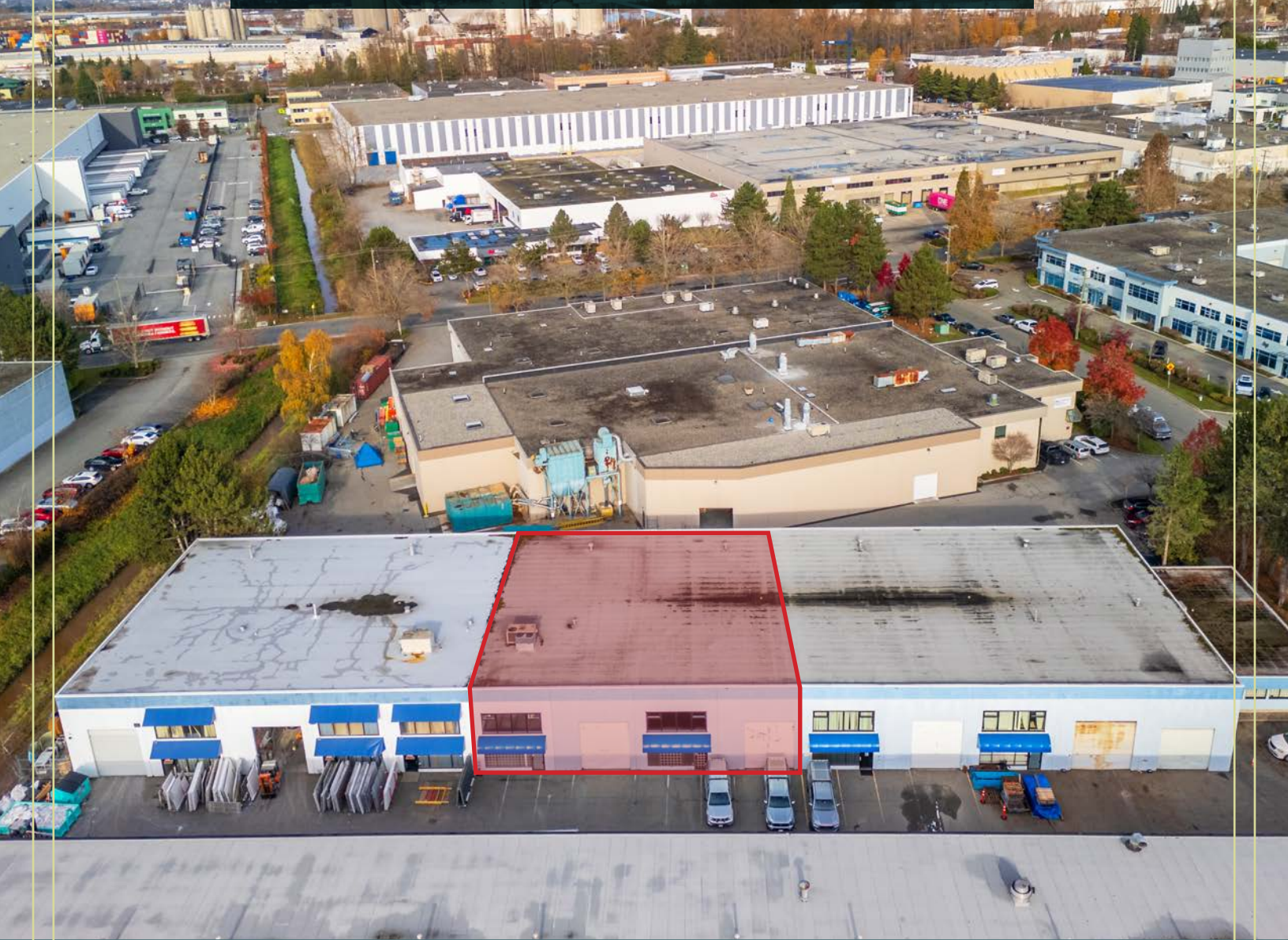


FOR SALE OR LEASE

Units 5 & 6

7187 Honeyman Place

DELTA, BC



**7,934 SF Warehouse Space with Heavy Power and
Two Grade Loading Doors**

CBRE

**THE
INDUSTRIAL
SPECIALISTS**

Units 5 & 6, 7187 Honeyman Place, Delta

The Opportunity

This exceptional industrial property offers one of the lowest asking sale and lease rates in Delta. Currently vacant and ideal for an owner-occupier, making it suitable for a wide range of industrial uses, specifically manufacturing, this property combines functionality, flexibility, and unbeatable value—ready for immediate occupancy.

Property Details

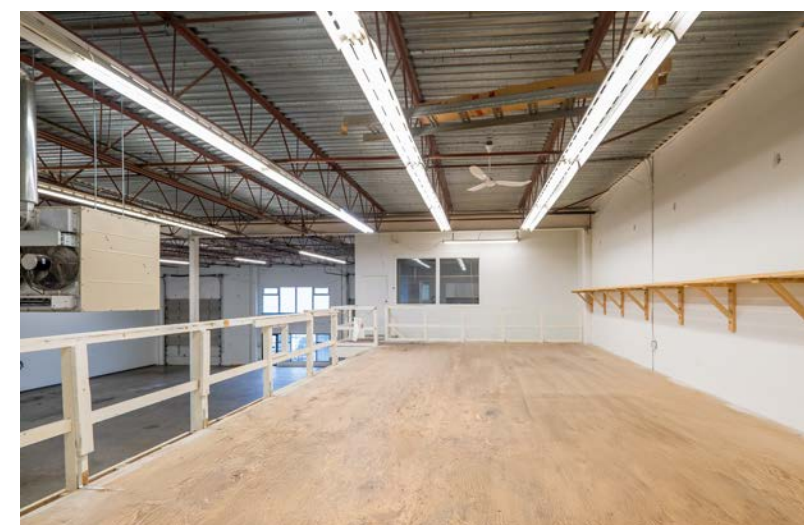
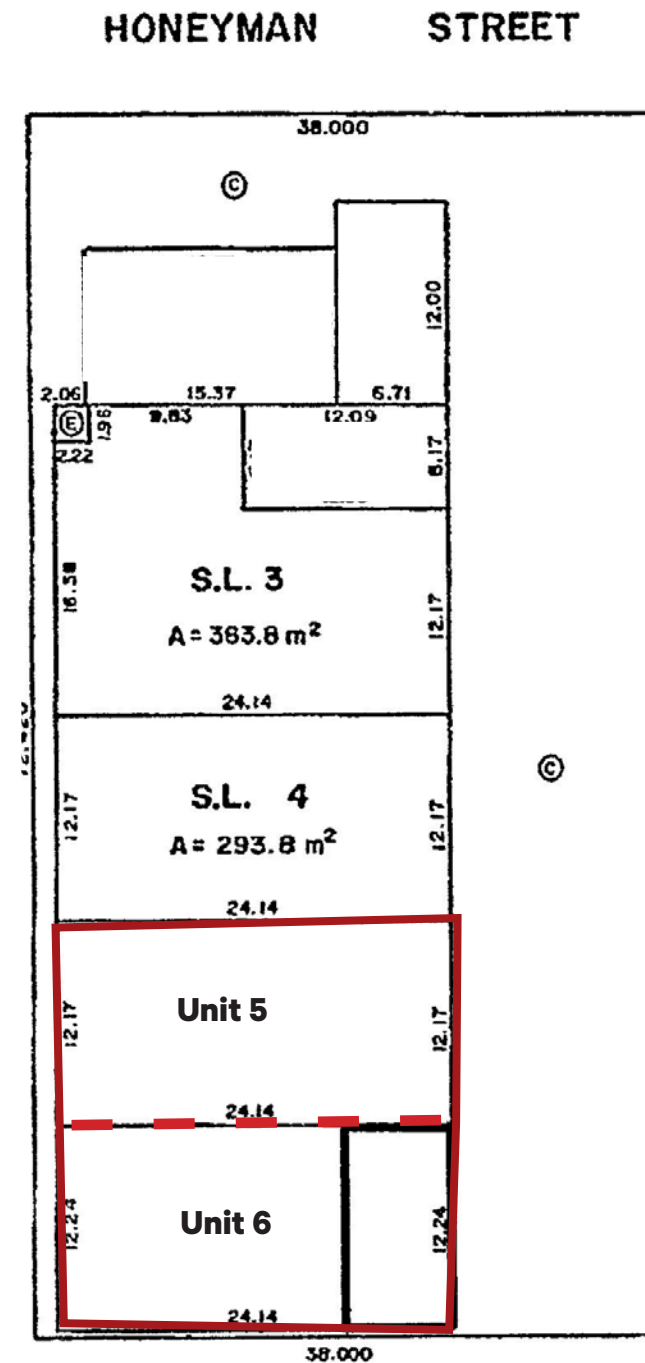
WAREHOUSE	5,493 SF
GROUND FLOOR OFFICE	850 SF
SECOND FLOOR OFFICE	850 SF
TOTAL	7,934 SF
FREE BONUS STORAGE MEZZANINE	741 SF
GRADE DOORS	2 x (12'x14')
CEILING HEIGHT	19' CLEAR HEIGHT
POWER TYPE	400 AMPS @ 600 Volts 3-Phase
RENT	\$15.00 PSF
ADDITIONAL RENT	\$5.18 PSF
SALE PRICE	\$3,875,000 (\$488 PSF)

**All areas to be confirmed by the purchaser.*

Features

- Heavy 3-Phase power
- Quality tilt-up concrete construction
- 19' clear ceiling height in warehouse
- 2 grade loading doors (12' x 14')
- Gas-fired warehouse heaters
- HVAC in the office area

Floor Plan





Location Overview

Located just off Viking Way and Bridgeport Road, this central location offers more than just street presence. With easy access to Knight Street, Bridgeport Road, and Highways 91/99, it ensures quick transportation to all areas of Metro Vancouver. Your employees, customers, and suppliers will appreciate being just minutes away from the shops and services of Bridgeport Road.

There is a convenient bus stop right at the property, providing excellent transit services. The property is only 20 minutes away from YVR airport, 25 minutes to Delta Port, and 25 minutes to downtown Vancouver, making it even more accessible and convenient.

CONNECT WITH US FOR MORE INFORMATION

ED FERREIRA

PERSONAL REAL ESTATE CORPORATION

Senior Vice President
604 662 5122
ed.ferreira@cbre.com

LUC SOARES

Sales Associate
778 372 1938
luc.soares@cbre.com

STEVE BROOKE

PERSONAL REAL ESTATE CORPORATION

Executive Vice President
604 662 5147
steve.brooke@cbre.com

JOEL BARNETT

PERSONAL REAL ESTATE CORPORATION

Executive Vice President
604 662 5570
joel.barnett@cbre.com

CBRE

**THE
INDUSTRIAL
SPECIALISTS**

CBRE Limited | 1021 West Hastings Street #2500, Vancouver, BC V6E 0C3 | cbre.ca

theindustrialspecialists.com

[@theindustrialspecialists](https://www.instagram.com/theindustrialspecialists)

This disclaimer shall apply to CBRE Limited, Real Estate Brokerage, and to all other divisions of the Corporation; to include all employees and independent contractors ("CBRE"). The information set out herein, including, without limitation, any projections, images, opinions, assumptions and estimates obtained from third parties (the "Information") has not been verified by CBRE, and CBRE does not represent, warrant or guarantee the accuracy, correctness and completeness of the Information. CBRE does not accept or assume any responsibility or liability, direct or consequential, for the Information or the recipient's reliance upon the Information. The recipient of the Information should take such steps as the recipient may deem necessary to verify the Information prior to placing any reliance upon the Information. The Information may change and any property described in the Information may be withdrawn from the market at any time without notice or obligation to the recipient from CBRE. CBRE and the CBRE logo are the service marks of CBRE Limited and/or its affiliated or related companies in other countries. All other marks displayed on this document are the property of their respective owners. All Rights Reserved. Mapping Sources: Canadian Mapping Services canadamapping@cbre.com; DMTI Spatial, Environics Analytics, Microsoft Bing, Google Earth. Images: Southgranville.org