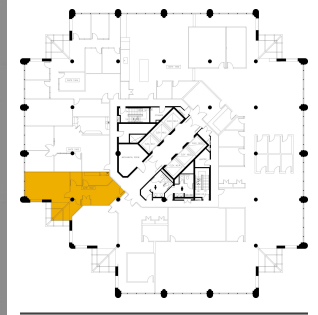
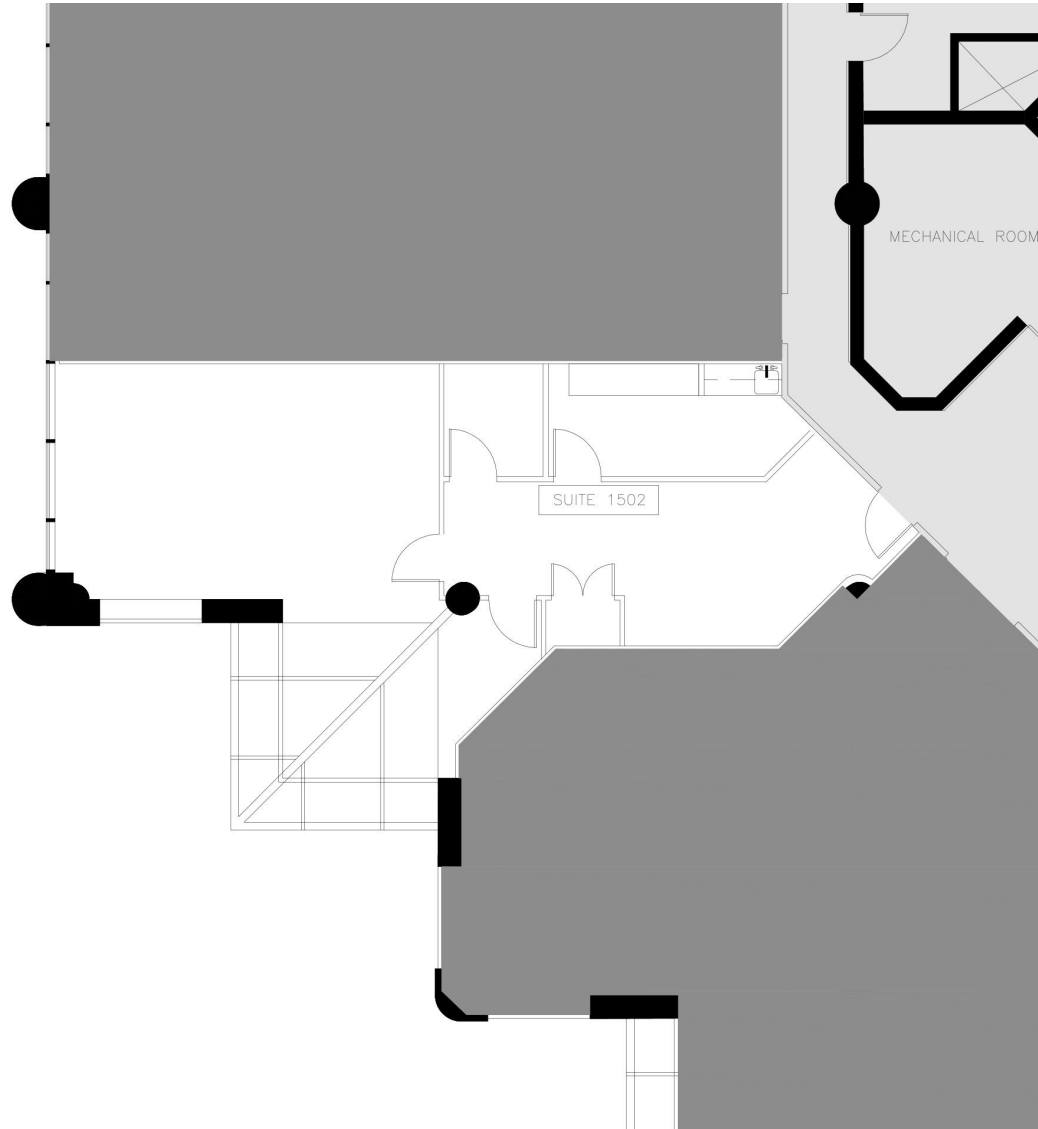


PRIME OFFICE SPACE FOR LEASE

Purdy's Wharf Tower I Suite 1502

Suite View



KEY PLAN

Purdy's Wharf Tower I
1959 Upper Water Street
Halifax Canada B3J 3N2

TECHNICAL INFORMATION

SUITE: 15th floor, Suite 1502
RENTABLE AREA: 1,097 sq.ft.

BUILDING DESCRIPTION

Purdy's Wharf is the prominent business address in the City of Halifax. A Class "AAA" office property having an attractive location on the Waterfront, it is connected to the important Pedway system in the Central Business District of Halifax. The exterior impression is striking and the complex dominates the Halifax skyline.

CONTACT INFORMATION

GWL Realty Advisors Inc
(902) 421-1122
pwoneserve@gwra.com

