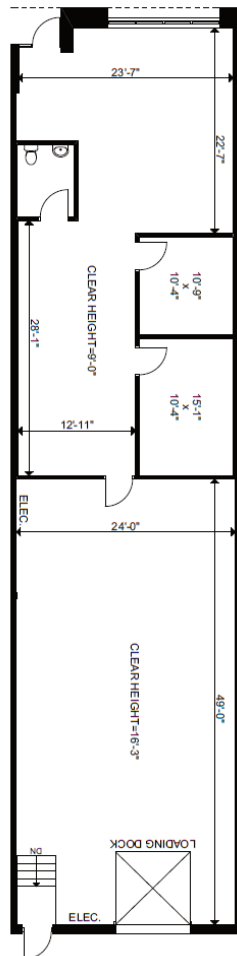


For Lease

Western Business Park

3495 Laird Road
Mississauga, ON



Unit 12

Total Square Feet
2,535 SF

Availability: October 1, 2026

Key features:

- 1,287 SF of office built out
- 16'3" clear height
- 1 loading dock door
- Net Rent : \$20.50 PSF
- 2026 TMI: \$6.75 PSF