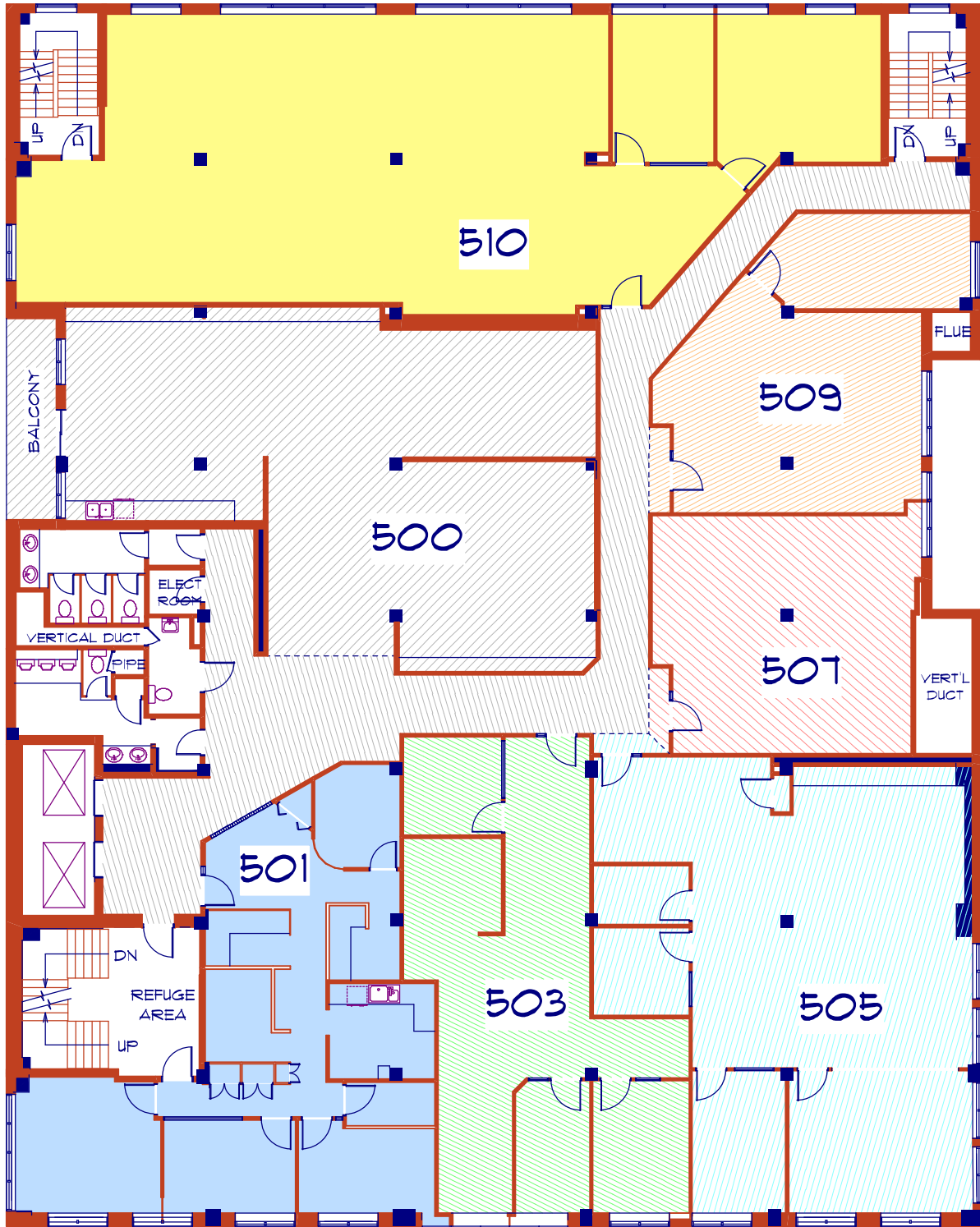


NOTE:

1. AREA MEASUREMENTS ARE IN ACCORDANCE WITH BOMA 2011 FOR OFFICE BUILDINGS: STANDARD METHODS OF MEASUREMENT (ANSI/BOMA Z65.1-2011).

DATE	REVISION DETAIL
JAN 4, 2018	SUITE 500 DEMISED TO ADD SUITE 510
FEB 8, 2021	REVISED FOR MEASUREMENT STANDARD
OCT 24, 2024	RECORDED AS-BUILT IMPROVEMENTS FOR SUITES 500, 505 & 510



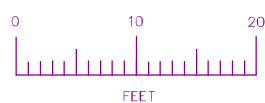
JOHN ROBSON PLACE
1155 ROBSON STREET
VANCOUVER BC
5th FLOOR

DRAWN BY:

GERRY PARSONS
FLOOR AREA MEASUREMENT TECHNICIAN



MARCH 3, 2011



the Parsons Group
Delta BC
604-512-1203
www.theparsonsgroup.ca

1/8" = 1'-0" ON 11" x 22" PAPER

1/16" = 1'-0" ON 8.5" x 11" PAPER