

For Lease

Centre on 96th

E330/E330M – 19358 96 Avenue, Surrey

UNIT SIZE	BASIC RENT	ADDITIONAL RENT (2026)	MONTHLY MANAGEMENT FEE	MONTHLY GROSS RENT	AVAILABILITY	TERM LENGTH
2,900 sf	\$19.50 psf	\$7.82 psf	\$331.08	\$6,933.41	Immediate	3 – 5 years

Unit features



Desirable rear-loading front office configuration



Two (2) washrooms



12' (W) by 14' (H) grade level loading



Sprinklered



20' clear ceiling heights



LED lighting



Mezzanine space



New unit heater with high efficiency



Kitchenette

Ilya Tihanenoks, Principal
604 260 1869
ilya.t@avisonyoung.com

Gord Robson*, Principal
604 647 1331
gord.robson@avisonyoung.com
**Personal Real Estate Corporation*

Riley Stephen, Sales Assistant
604 757 4924
riley.stephen@avisonyoung.com

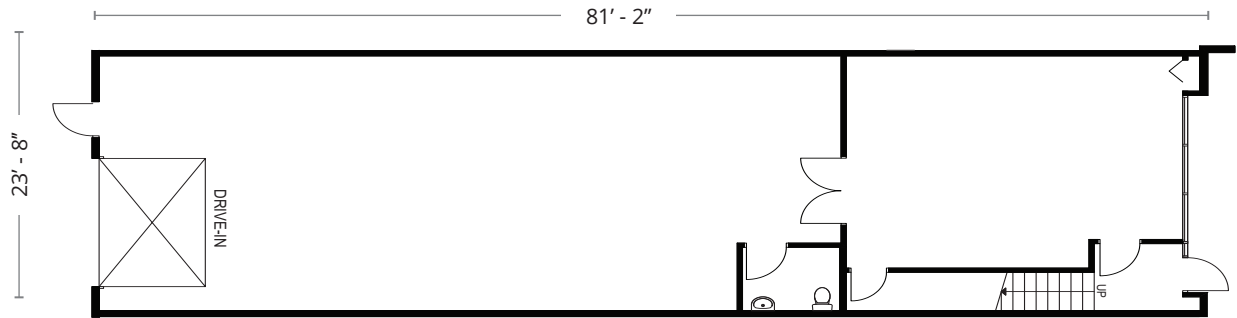
wesgroup

**AVISON
YOUNG**

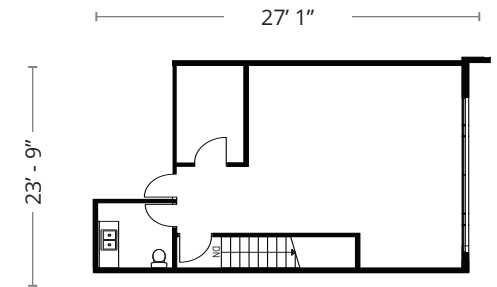
UNIT E330/E330M



Main floor	2,150 sf
Mezzanine	750 sf
Total	2,900 sf



Main floor



Mezzanine



Ilya Tihanenoks, Principal
604 260 1869
ilya.t@avisonyoung.com

Gord Robson*, Principal
604 647 1331
gord.robson@avisonyoung.com
**Personal Real Estate Corporation*

Riley Stephen, Sales Assistant
604 757 4924
riley.stephen@avisonyoung.com

wesgroup

**AVISON
YOUNG**