



FIRSTTRACK
DEVELOPMENT

RETAIL

CENTRALE

Capitol Hill



WILLINGDON
+ HASTINGS

FOR SALE
Commercial Ownership
Opportunities

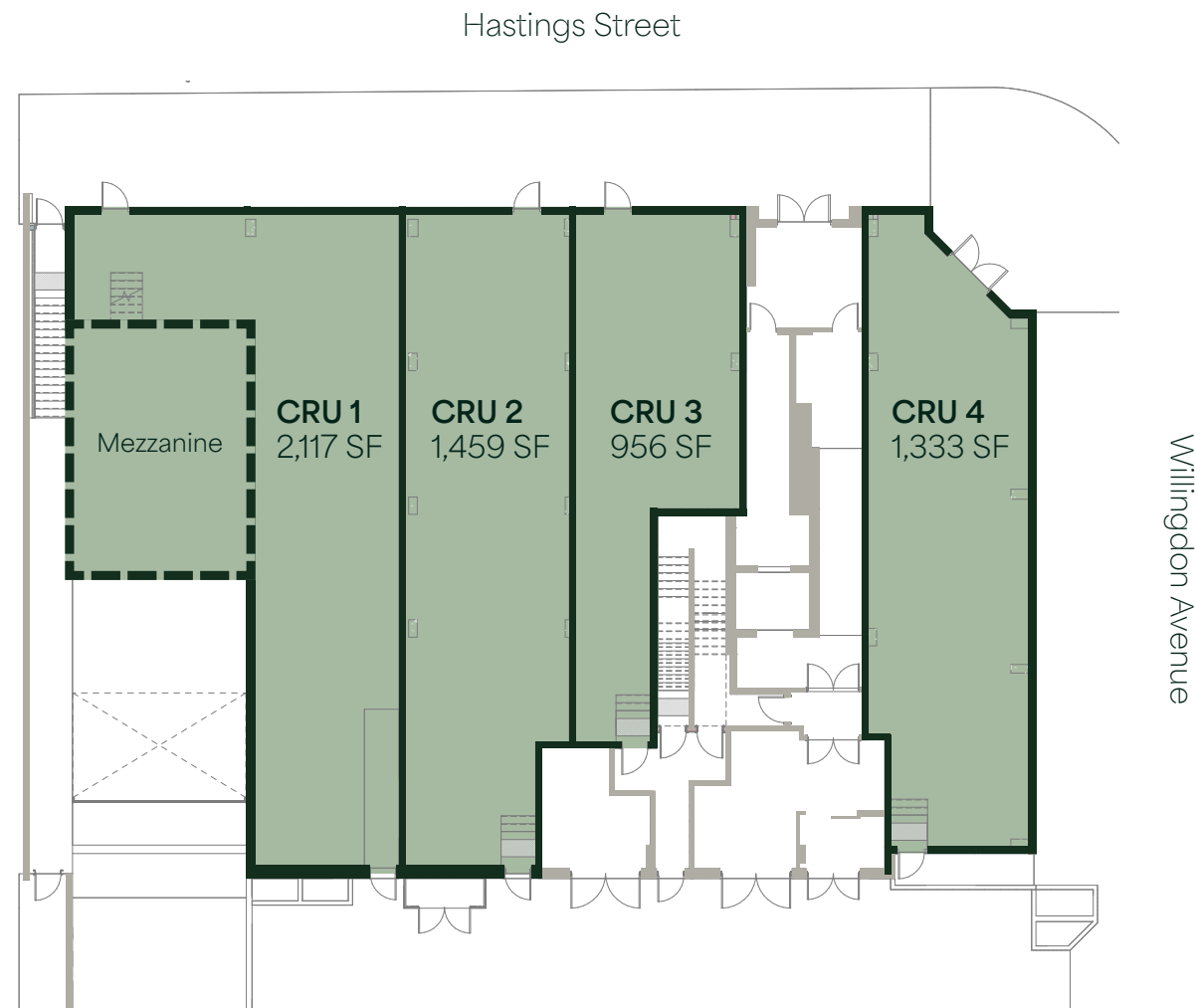
Location Overview

Centrale is strategically positioned at the gateway to Burnaby Heights, one of Metro Vancouver's most established and active commercial districts. Located at the high-traffic intersection of Willingdon Avenue and Hastings Street, this represents a rare ownership opportunity within a mature, pedestrian-oriented streetscape. The area features a strong mix of independent retailers, popular dining destinations, and essential services that attract consistent patronage from the surrounding established residential neighbourhoods.

With prominent corner visibility and direct access to public transit, Centrale delivers reliable customer flow and excellent connectivity for businesses. This location combines authentic neighbourhood character with strategic positioning along a major urban corridor.

LA
DOLCE
VITA

Available Units



| Unit | Size | Price | Strata Fee |
|-------|----------|-------------|------------------|
| CRU 1 | 2,117 SF | \$2,799,000 | \$1,163.26/month |
| CRU 2 | 1,459 SF | \$2,225,000 | \$803.06/month |
| CRU 3 | 956 SF | \$1,475,000 | \$525.53/month |
| CRU 4 | 1,333 SF | \$1,999,000 | \$732.20/month |

Property Highlights



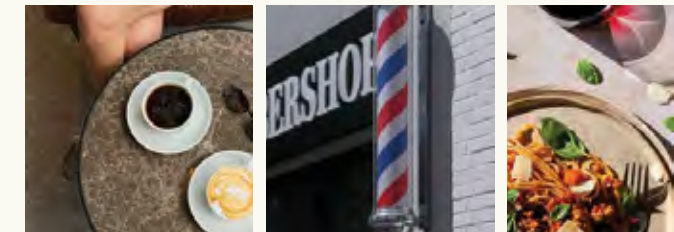
Excellent exposure at the intersection of Willingdon and Hastings



Situated in Burnaby Heights, a historic and culturally diverse commercial district



Underground parking located onsite



CENTRÀLE

Capitol Hill

SECOND NARROWS

| Demographics | 1 km | 3 km | 5 km |
|------------------|-----------|-----------|-----------|
| 👤 Population | 14,501 | 86,913 | 227,005 |
| 🏠 Households | 5,078 | 33,705 | 84,987 |
| 💰 Avg. HH Income | \$149,585 | \$135,708 | \$141,103 |
| 👶 Median Age | 41.4 | 37.7 | 38.9 |

Source: Esri, 2026

PARKS & RECREATION

- 01 Confederation Park
Soccer field, track, baseball diamond, water park, lawn bowling, skate park, dog park, picnic area, and trails
- 02 Trans Canada Trail Burnaby
- 03 Eileen Dailly Leisure Pool & Fitness Centre
- 04 Kensington Pitch & Putt

TRANSIT

- Kootenay Loop
- R5 (SFU)

AMENITIES

- 05 Driftwood Athletics
- 06 Anytime Fitness
- 07 Lift Hair Lounge
- 08 Hastings Veterinary Hospital
- 09 CIBC
- 10 TD
- 11 Vancity
- 12 Pharmasave
- 13 RBC
- 14 Safeway
- 15 Chevron
- 16 Orangetheory Fitness

DINING

- 17 The Ramen Butcher
- 18 Baci's Ristorante
- 19 In the Moment Coffee
- 20 L'Artista Italian Restaurant
- 21 Rens Café
- 22 Chad Thai Restaurant
- 23 The Valley Bakery
- 24 Sopra Sotto
- 25 Panino Mio by La Grotta Del Formaggio
- 26 Glenburn Soda Foundation & Confectionery
- 27 Sungiven Foods
- 28 Peaked Pies
- 29 Hellcrust Pizza
- 30 Cioffi's Cucina
- 31 Osaka Sushi
- 32 Subway
- 33 Starbucks





CENTRALE

Capitol Hill

Brodie Henrichsen*
Executive Vice President
+1 604 628 4331
brodie.henrichsen@jll.com

Connor O’Keeffe*
Senior Vice President
+1 604 628 4339
connor.okeeffe@jll.com



jll.ca

510 West Georgia Street, Suite 2150, Vancouver, BC V6B 0M3
Jones Lang LaSalle Real Estate Services, Inc.

Although information has been obtained from sources deemed reliable, JLL does not make any guarantees, warranties or representations, express or implied, as to the completeness or accuracy as to the information contained herein. Any projections, opinions, assumptions or estimates used are for example only. There may be differences between projected and actual results, and those differences may be material. JLL does not accept any liability for any loss or damage suffered by any party resulting from reliance on this information. If the recipient of this information has signed a confidentiality agreement with JLL regarding this matter, this information is subject to the terms of that agreement.

©2026. Jones Lang LaSalle Real Estate Services, Inc. All rights reserved. *Personal Real Estate Corporation