

1.17 +/- ACRES INDUSTRIAL YARD



20 RAILWAY AVE.
SPRUCE GROVE, AB

Victor Moroz, Associate Broker
780.499.6400
victor@royallepage.ca

Royal LePage® Noralta Real Estate Inc, Brokerage
202 Main Street, Spruce Grove, AB
Independently Owned & Operated

ROYAL LEPAGE®
COMMERCIAL™

FOR LEASE

\$3,500 / Month

Property Features

- 1.17 +/- Acres Industrial Yard
- Fully Fenced, secure Industrial yard
- Zoned M1 - General Industrial
- Ideal for secure outdoor storage or laydown space
- Easily accessible via Hwy 16A
- Open layout for easy maneuverability
- Surrounded by established industrial operations
- Ideal location for Contractors or Trades
- Just 20 minutes from West Edmonton

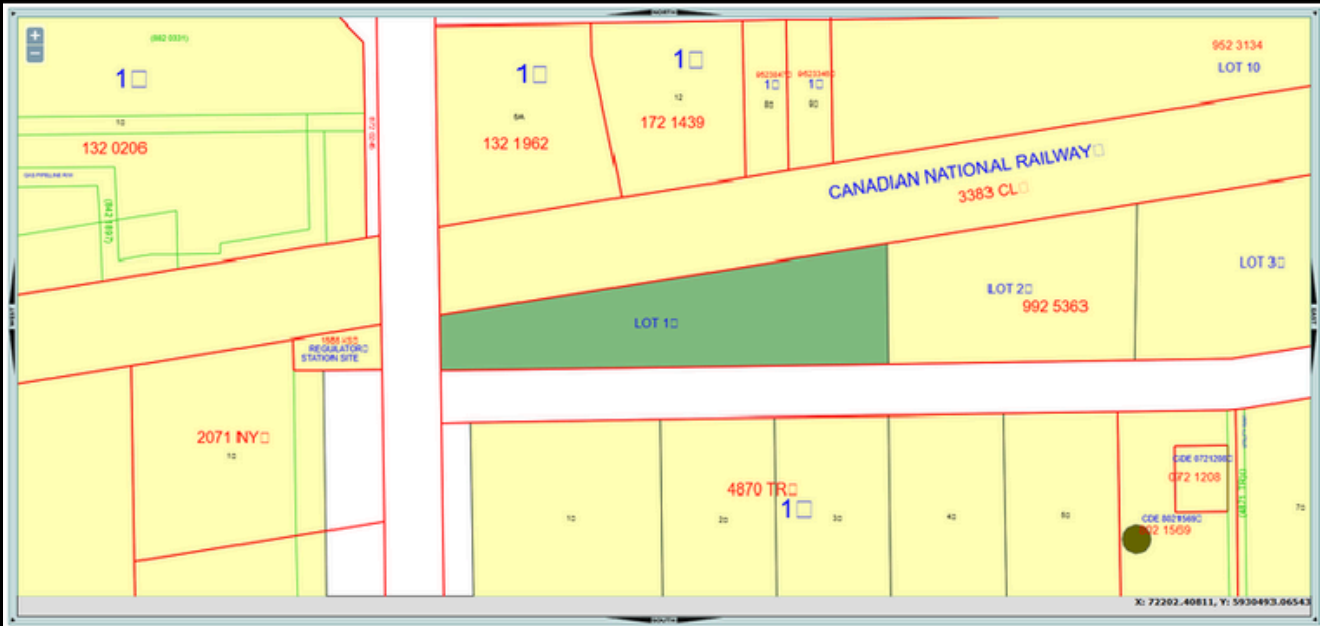


PROPERTY OVERVIEW

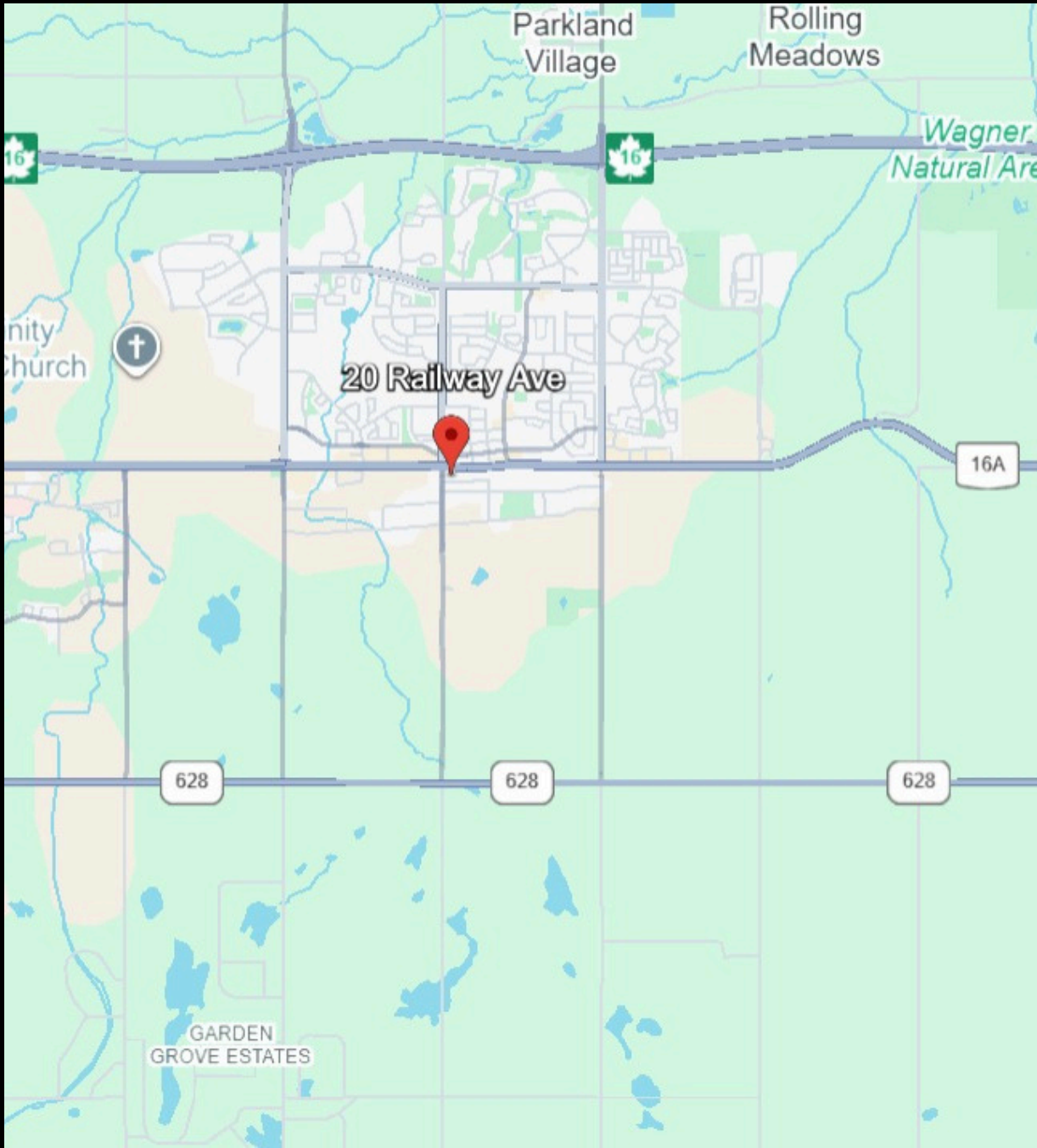
PROPERTY PHOTOS



PROPERTY PHOTOS



LOCATION MAP



Royal LePage® is a registered trademark of Royal Bank of Canada and is used under licence by Residential Income Fund L.P., Bridgemaq Real Estate Services Inc. and Bridgemaq Real Estate Services Manager Limited. All offices are independently owned and operated, except those marked as indicated at rlp.ca/disclaimer. Not intended to solicit currently listed properties or buyers under contract. The above information is from sources believed reliable, however, no responsibility is assumed for the accuracy of this information. ©2025 Bridgemaq Real Estate Services Manager Limited. All rights reserved.