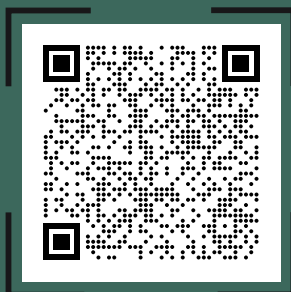




## SCAN FOR BROCHURE



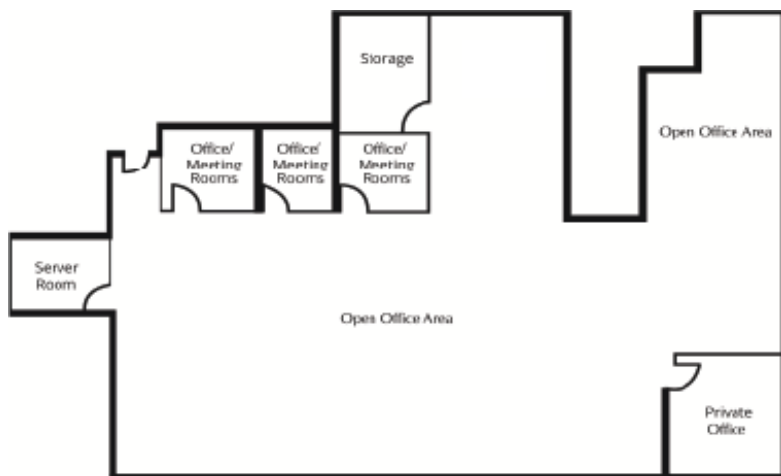
Improved office space features abundant natural light and stunning views of the North Shore mountains.

Unit 410

Area 4,145 SF

Availability January 1, 2024

Gross Rent Contact listing agents



Jocelyne Legal

Personal Real Estate Corporation

**EXECUTIVE VICE PRESIDENT**

+1 604 931 5021

jlegal@floorspace.ca

Harris Sheldon

**ASSOCIATE**

+1 672 336 8894

harris@floorspace.ca