

217-221

EAST 16TH AVENUE
VANCOUVER

 **LEE &
ASSOCIATES**
COMMERCIAL REAL ESTATE SERVICES



AVAILABLE FOR SALE

EXCEPTIONAL MIXED-USE INVESTMENT OPPORTUNITY
6,871 SF ON 5,906.36 SF LOT

FOR SALE | EXCEPTIONAL MIXED-USE INVESTMENT OPPORTUNITY

217-221 EAST 16TH AVENUE

VANCOUVER, BC

PROPERTY DETAILS

Legal Address	221 E 16th Avenue, Vancouver, BC, V5T 2T5
PID	007-919-140
Legal Description	Lot B Block 97 Plan VAP5112 District Lot 301 Land District 36 OF LOTS 17 & 18
Building Size	6,871 SF
Site Size	5,906.36 SF (48.4' x 122')
Units	5 residential, 2 commercial
Year Built	1972
Zoning	C-2C (Commercial) 3.00 FSR
OCP Broadway Plan	Main Street Village Area B: 3.5-3.7 FSR 6 Storeys
Property Taxes	\$25,967.02 (2024)
Assessed Value	\$4,685,600.00 (2025 assessment as of July 1, 2024)
Listing Price	Contact agents
Title	Clear title

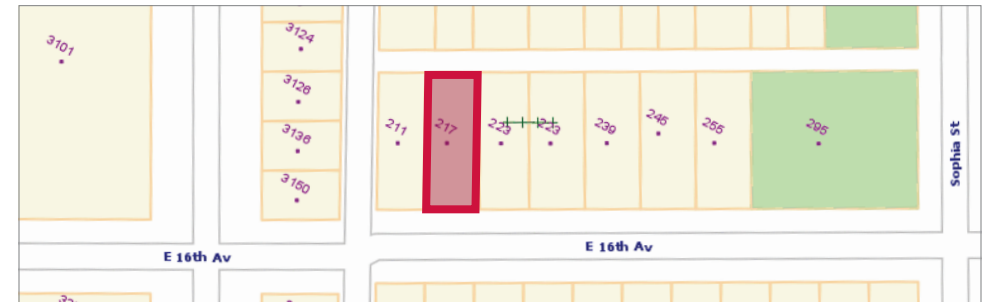


The Opportunity

217–221 East 16th Avenue is a well-maintained and operated mixed-use commercial/residential property in the much desired, trendy South Main neighbourhood (SOMA). The building is located on the north side of East 16th Avenue on a C-2C site with potential for a 3.0 FSR. Two commercial ground floor units are fully leased as are the five apartment units above which have been recently improved.

Location

Main Street is in the heart of the much desired South Main neighbourhood (SOMA). The Property is ideally located on East 16th Avenue just east off the Main Street commercial corridor, which connects Downtown Vancouver with south Vancouver. Main Street continues to see increased development activity and resident in-flow which will add to the 22,000 daily vehicles and high number of pedestrians present in the area today.

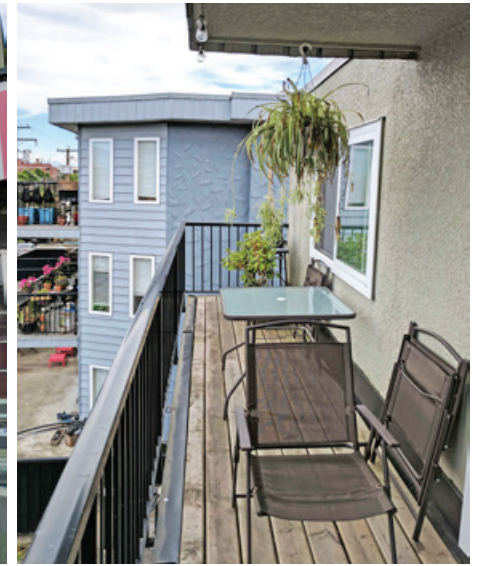


Features

- ▶ Mixed-use rental concrete block building
- ▶ All residential units fully renovated (newer appliances, counter tops, engineered hardwood flooring, tiling, etc.)
- ▶ Extra large patios
- ▶ Extra basement storage currently generating \$1,050 per month
- ▶ Laundry area features 1 washing machine and 1 dryer (leased)
- ▶ Hot water baseboard heating
- ▶ Stage 1 environmental available
- ▶ Fully tenanted
- ▶ 7 surface parking stalls

Building Upgrades

- ▶ New torch on roof and decks (last 5 years)
- ▶ All suites renovated (last 5 years)
- ▶ New double-glazed windows throughout the building (last 3 years)
- ▶ 2 new hot water tanks (3 and 5 years old)
- ▶ Telus Fibre Optics throughout building (2015)
- ▶ LED lights in common area (2016)



Residential Suite Mix

Type	Units	Avg. Rent	Avg. Size
2 Bedroom	1	\$2,400/month	839 SF
1 Bedroom	4	\$1,463/month	583 SF
Total	5		



Income & Expenses

Projected 2020	
Gross Income	\$204,912.00
Vacancy (0.5%)	(\$1,024.56)
Operating Expenses	(\$60,254.08)
Net Income	\$145,582.92

Commercial Schedule

	Rent per Gross Annum	Size
Commercial	\$57,600.00	2,162 SF
Storage Space	\$12,600.00	1,658 SF



217-221 EAST 16TH AVENUE VANCOUVER

**LEE &
ASSOCIATES**
COMMERCIAL REAL ESTATE SERVICES



Howard Malchy

Personal Real Estate Corporation
D 604.895.2226 C 604.727.7117
howard.malchy@lee-associates.com

Arash Rezaei

Personal Real Estate Corporation
D 604.630.3406 C 604.356.2356
arash.rezaei@lee-associates.com

Russell Long, BA, DULE

D 604.630.3059 C 604.354.8845
russell.long@lee-associates.com

© 2025 Lee & Associates Commercial Real Estate (BC) Ltd. ("Lee & Associates Vancouver"). All Rights Reserved. 617. E. & O.E.: Although the information contained within is from sources believed to be reliable, no warranty or representation is made by Lee & Associates Vancouver as to its accuracy being subject to errors, omissions, conditions, prior lease, withdrawal or other changes without notice and same should not be relied upon without independent verification.