

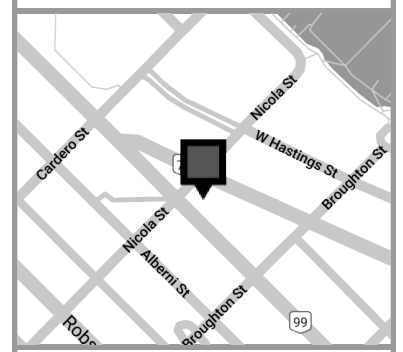
Gilic Developments

Version FP1B	Created: 01/13/2020 Measured: 10/31/2019
------------------------	---

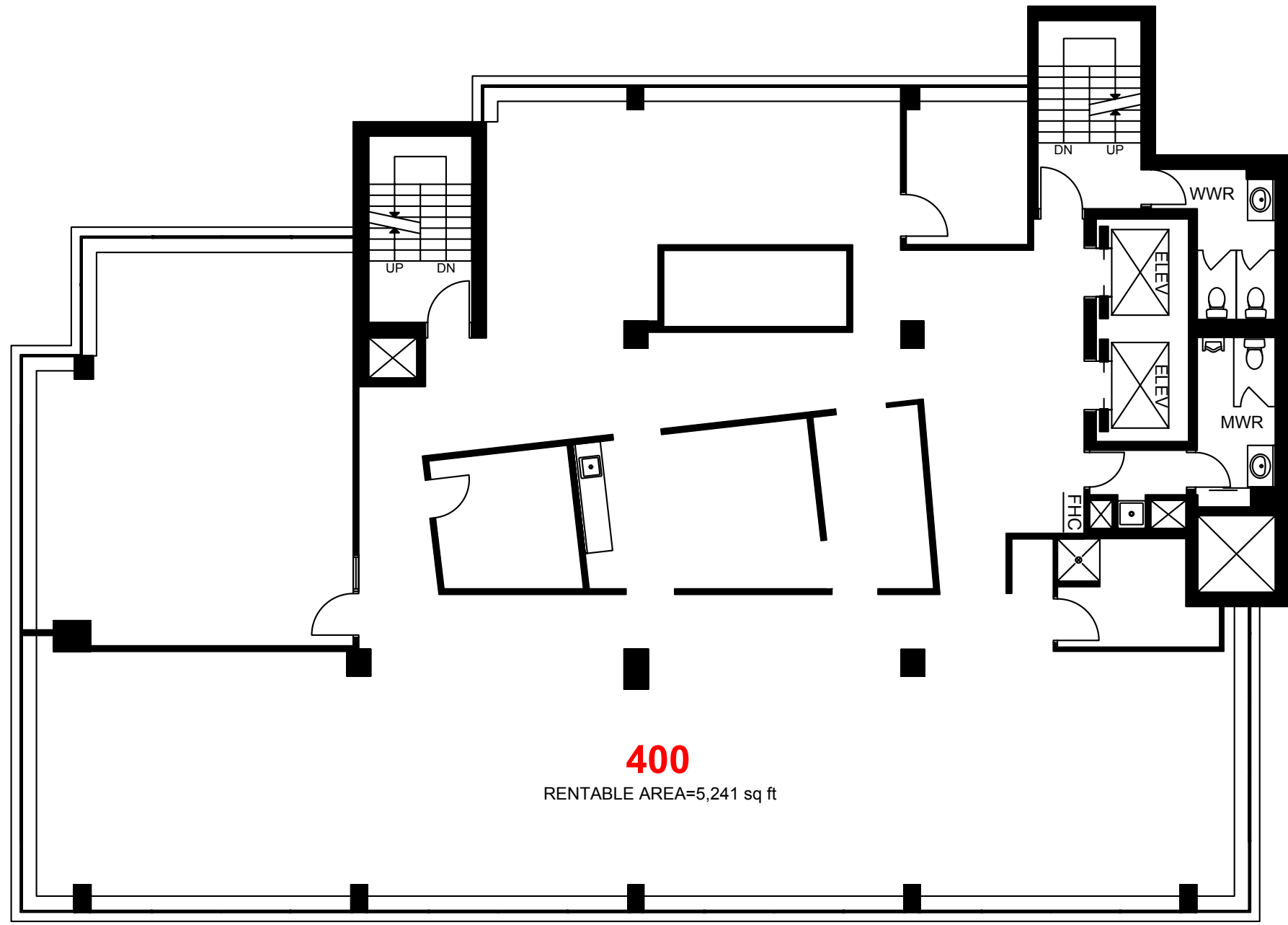
1455 West Georgia Street
Vancouver, British Columbia,
Canada

Floor 04

Total Floor Rentable Area: 5,241 sq ft



This work product has been prepared by Extreme Measures Inc. pursuant to a contract with the Client for the sole benefit of and use by the Client. No third party may rely on this work product without the receipt of a reliance letter from Extreme Measures Inc.



400
RENTABLE AREA=5,241 sq ft

