

8524 Jasper Avenue, Edmonton

High Exposure Retail



PROPERTY DETAILS

Address:	8524 Jasper Avenue NW, Edmonton
Zoning:	DC2 820 (General Purpose)
Total Size:	1,516 SF (+/-)
Reduced Net Lease Rate:	\$16.00 / SF
Op Costs:	\$13.00 / SF



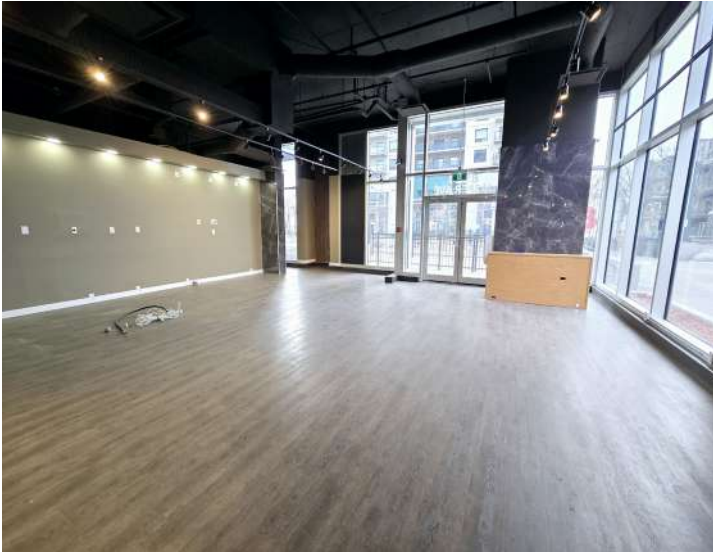
PROPERTY HIGHLIGHTS

- Modern and beautifully built-out with high ceilings and natural light
- Zoning allows for a wide variety of uses
- Ideal for daycare, health/medical, dental and personal services including hair or nail salon and other esthetic services
- Great opportunity for pet grooming services and other service related retail or businesses requiring street level office
- Fenced patio included
- Excellent location in a densely populated area at The Northbank residential towers, surrounded by an abundance of other residential buildings in the immediate area
- Join nearby businesses including: Panini's Italian Cucina, Rob's Famous Fried Chicken, Felice café, and 7ways Convenience Store



Erin Oatway
 Partner / Associate
 780-218-7585
 erin@aicrecommercial.com

Jim McKinnon
 Broker / Partner
 780-719-8183
 jim@aicrecommercial.com



 **EXISTING
BUILDOUT**

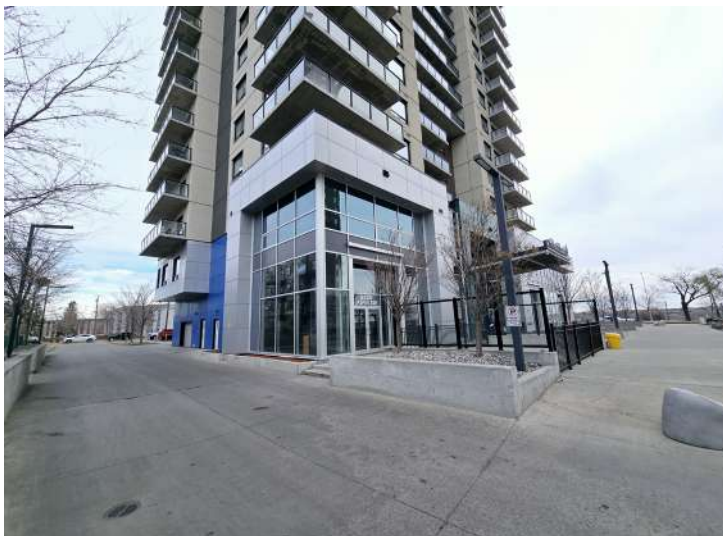
- Existing build-out includes:
 - Open Retail Area
 - 3 treatment rooms
 - 1 office area
 - 2 washrooms



Erin Oatway
Partner / Associate
780-218-7585
erin@aicommercial.com

Jim McKinnon
Broker / Partner
780-719-8183
jim@aicommercial.com

Neighbourhood features:



Neighbourhood features:



LOCATION FEATURES

- **Located Under Residential Units:** A prime retail space directly beneath a busy residential building, ensuring consistent foot traffic from residents.
- **Surrounded by High-Density Housing:** Numerous apartment complexes and condominiums in the area create a built-in customer base.
- **Proximity to Downtown:** Just minutes from Edmonton's downtown core, attracting both local and commuter clientele.
- **Accessible Location:** Situated on Jasper Avenue, a key arterial road with excellent visibility and accessibility.
- **Nearby Amenities:** Close to parks, schools, grocery stores, and services, drawing a steady stream of visitors to the area.
- **Growing Community:** A vibrant, urban neighborhood with a mix of professionals, families, and students.

VEHICLES PER DAY

Jasper Avenue:	20,226
84 Street:	16,200
83 Street:	20,566

AREA POPULATION
(within 5kms)

- 216,055 Residents
- 293,905 Daytime Population
- 2.6% projected growth (2023-2028)

AREA INCOME

- Average household income of \$84,896

WALK SCORE
89

TRANSIT SCORE
73

BIKE SCORE
85



Erin Oatway
Partner / Associate
780-218-7585
erin@aicrecommercial.com

Jim McKinnon
Broker / Partner
780-719-8183
jim@aicrecommercial.com

Disclaimer: This disclaimer applies to AICRE COMMERCIAL. The information set out, including, without limitation, any projections, images, opinions, estimates or assumptions obtained from third parties has not been verified, and AICRE COMMERCIAL does not guarantee or represent the accuracy or completeness of the information. The recipient of the information should take steps they deem necessary to verify the information. The information may change at any time.