




SUITE 910 FOR LEASE

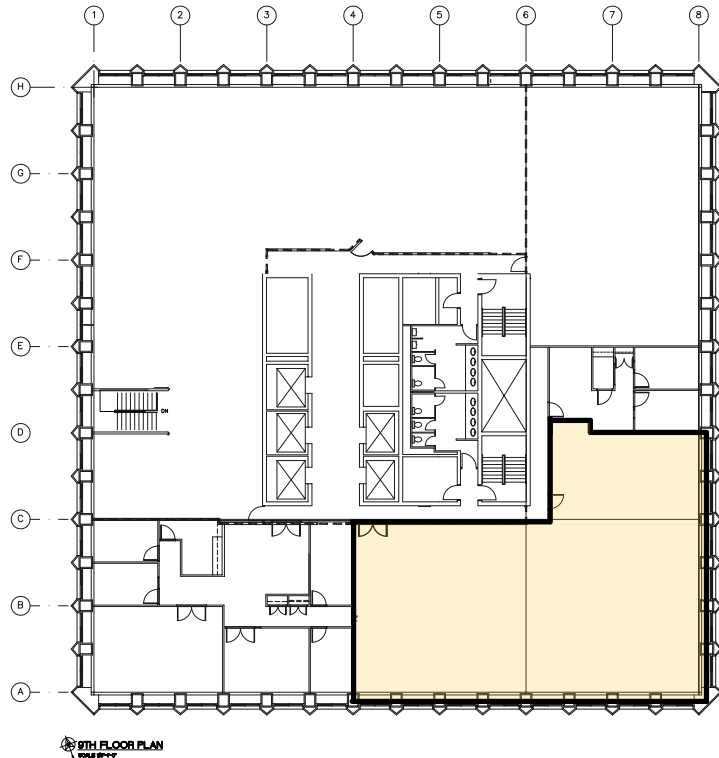
ONE LOMBARD PLACE

Proudly managed by
BentallGreenOak 

SUITE 910

One Lombard Place
Winnipeg, MB

SPECIFICATIONS



Suite #	910
Available Area	4,499 sf (+-)
Net Rent:	Market
Op Costs:	\$22.54 psf per annum (2023 estimate)
Term:	5 to 10 years
Possession:	Immediately
Highlights:	Views overlooking Portage & Main. Shell Condition
Parking:	Underground heated, scramble and surface lots
Year Built:	1969
Management:	On-site office BentallGreenOak (Canada) Limited Partnership