



DREAM  
COLLECTION  
FINANCIAL DISTRICT



PREMIUM OFFICE LEASING OPPORTUNITIES

# 36 Toronto Street

# Leasing Opportunities

## Building Specifications

<b>Size</b>	217,862 SF
<b>Year Built</b>	1914
<b>Number Of Floors</b>	13
<b>Operating Costs</b>	\$19.13 (PSF/YR)
<b>Realty Tax</b>	\$8.60 (PSF/YR)
<b>Total Additional Rent</b>	\$27.73 (PSF/YR)
<b>Underground Parking</b>	50 Stalls

## Building Features

- Public Transit Surface Route
- Eastside: 8'6" ; Westside 9'6" (slab to suspended ceiling)
- Satellite Dish Capability
- Fibre Optic Capability
- Shipping / Receiving
- HVAC: VAV system, 2 Unilux hot water boilers, 2 York chillers, 291 ton and 359 ton
- Fire Detection System
- Sprinkler System
- Security Systems: computerized access control and alarm monitoring system and manned security

## On-site Amenities

- Poké Box
- Curatus Wine Club
- Coffee by Carlton's
- OEB Breakfast Co.
- Rob's Best Foot Forward
- Bar Goa
- Canada Post
- Samir Hair Design
- End-of-Trip Facilities
- Underground Parking and Bike Stalls

## Nearby Amenities

- PATH System
- Pumpernickel's
- Sansotei Ramen
- Goodlife Fitness
- Canada Post
- CF Toronto Eaton Centre

## Certifications



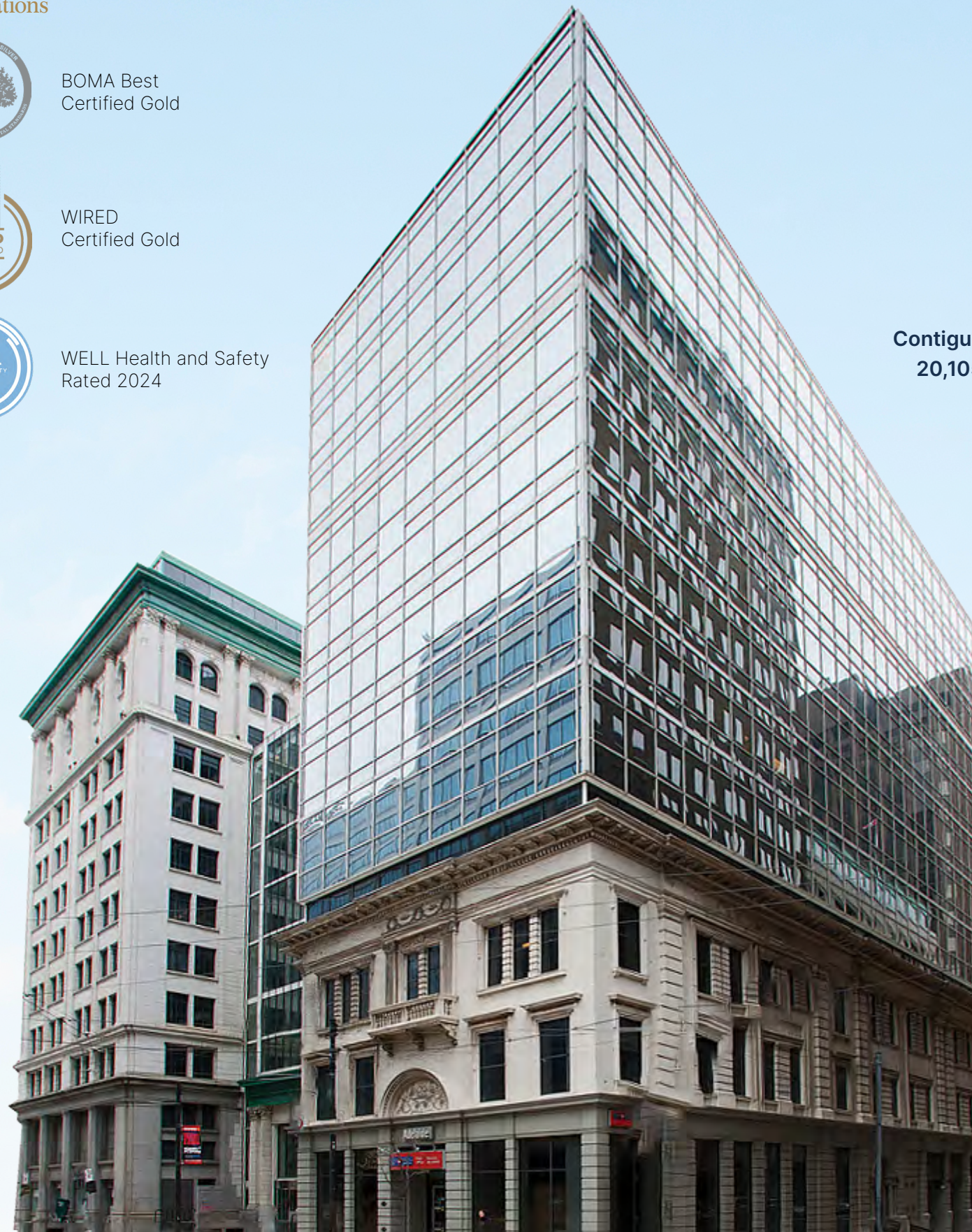
BOMA Best Certified Gold



WIRED Certified Gold



WELL Health and Safety Rated 2024



Contiguous:  
20,105 SF

### 13th Floor - Full Floor Opportunity: 14,644 SF

- Suite 1320: 7,400 SF | Available Immediately
- Suite 1310: 7,246 SF | Available Immediately

### 12th Floor

- Suite 1200: 5,458 SF | Available Immediately

### 11th Floor

- Suite 1160: 3,334 SF | Available Sep 1, 2026
- Suite 1150: 1,512 SF | Available Immediately

### 9th Floor

- Suite 910: 2,409 SF | Available Immediately

### 8th Floor

- Suite 800: 8,496 SF | Available Immediately

### 7th Floor

- Suite 750: 9,042 SF | Available Immediately

### 5th Floor

- Suite 505: 1,929 SF | Available Immediately
- Suite 502: 1,437 SF | Available Immediately

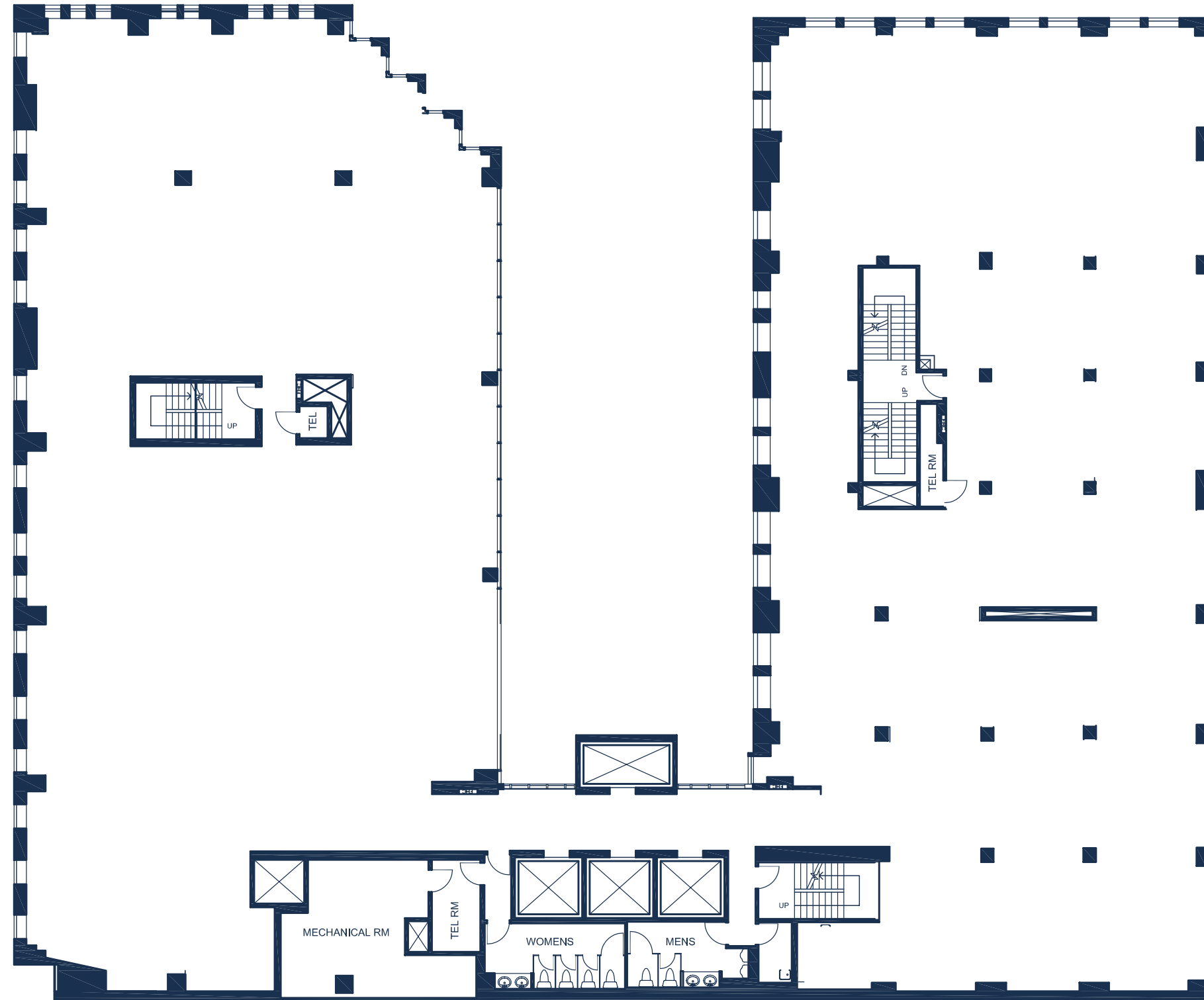
### 2nd Floor

- Suite 260: 1,976 SF | Available Nov 1, 2026

THE BUILDING -

# Standard Floorplate

~17,000 SF | approximately 8'6" - 9' | Full floor suite in base building condition



THE OPPORTUNITY-

# An Inspiring Place to Work & Play

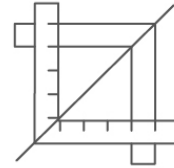


DREAM OFFICE-

# Stress-Free Turnkey



Expertly designed,  
furnished and  
move-in ready



Experienced in-house  
Project Management  
and Construction Team



Simplified process  
committed to making  
design and move in  
easy for tenants



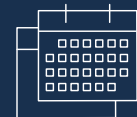
## Short-Form Lease



Straight  
to Lease



Seven Page  
Document



For Short-Term  
Deals Only

Three years and under

# Best in Class Accessibility



- 1 Closest PATH entrance  
(1 Adelaide St. E): **100m** **PATH**
- 2 Nathan Philips Square: **400m**
- 3 CF Toronto Eaton Centre: **650m**
- 4 Scotiabank Arena: **950m**

- Yonge-University Subway Line
- TTC Bus Route
- Future Ontario Line
- GO Transit Line
- Green P Parking

- 40 min.**  
Pearson International via UP Express
- 20 min.**  
Drive to Billy Bishop Airport
- 3 min.**  
Walk to Queen Station or King Station
- 10 min.**  
Walk to Union Station

# A Hub of Convenience & Culture



### Hotels

- 1 The St. Regis Toronto: 300m
- 2 One King West Hotel & Residence: 280m
- 3 Shangri-La Toronto: 800m
- 4 Sheraton Centre Toronto: 800m
- 5 Hilton Toronto: 800m
- 6 Fairmont Royal York: 900m

### Food & Beverage

- 7 Bar Goa: On-site
- 8 OEB Breakfast Co.: 44m
- 9 Estiatorio Milos: 350m
- 10 CKTL & Co.: 350m
- 11 Florin' on Richmond: 450m
- 12 John & Sons Oyster House: 450m
- 13 Daphne: 500m
- 14 Wine Academy: 500m
- 15 Alobar: 650m
- 16 Sushi Yugen: 650m
- 17 Chop Steakhouse & Bar: 650m

- Yonge-University Subway Line
- TTC Bus Route
- Future Ontario Line
- GO Transit Line

**Byron Ahmet\***  
Executive Vice President  
byron.ahmet@cbre.com  
416 815 2354

**Jennifer Millar\*\***  
Associate Vice President  
jennifer.millar@cbre.com  
647 328 8859

**Christopher Valela\*\***  
Associate Vice President  
chris.valela@cbre.com  
416 662 2477

**CBRE Limited**  
Real Estate Brokerage  
145 King St W  
Toronto, ON. M5H 1J8



This disclaimer shall apply to CBRE Limited, Real Estate Brokerage, and to all other divisions of the Corporation; to include all employees and independent contractors ("CBRE"). All references to CBRE Limited herein shall be deemed to include CBRE, Inc. The information set out herein, including, without limitation, any projections, images, opinions, assumptions and estimates obtained from third parties (the "Information") has not been verified by CBRE, and CBRE does not represent, warrant or guarantee the accuracy, correctness and completeness of the Information. CBRE does not accept or assume any responsibility or liability, direct or consequential, for the Information or the recipient's reliance upon the Information. The recipient of the Information should take such steps as the recipient may deem necessary to verify the Information prior to placing any reliance upon the Information. The Information may change and any property described in the Information may be withdrawn from the market at any time without notice or obligation to the recipient from CBRE. CBRE and the CBRE logo are the service marks of CBRE Limited and/or its affiliated or related companies in other countries. All other marks displayed on this document are the property of their respective owners. All Rights Reserved.

\*Broker \*\*Sales Representative