



FOR LEASE

2343 Main Street

Prime Retail Space

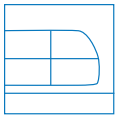
LUKE MORAN  
Vice President, Leasing  
lukem@petersonbc.com  
604 699 2286

Peterson

## LOCATION

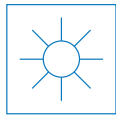
Discover the perfect retail opportunity in the heart of Vancouver's vibrant Mount Pleasant neighbourhood located at the junction of Main Street and Kingsway. The property is just steps away from the upcoming Mount Pleasant Station on the Millennium Line Broadway extension, ensuring exceptional foot traffic and connectivity.

### WALK & TRANSIT SCORES



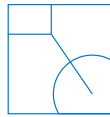
Transit

90



Walk

100



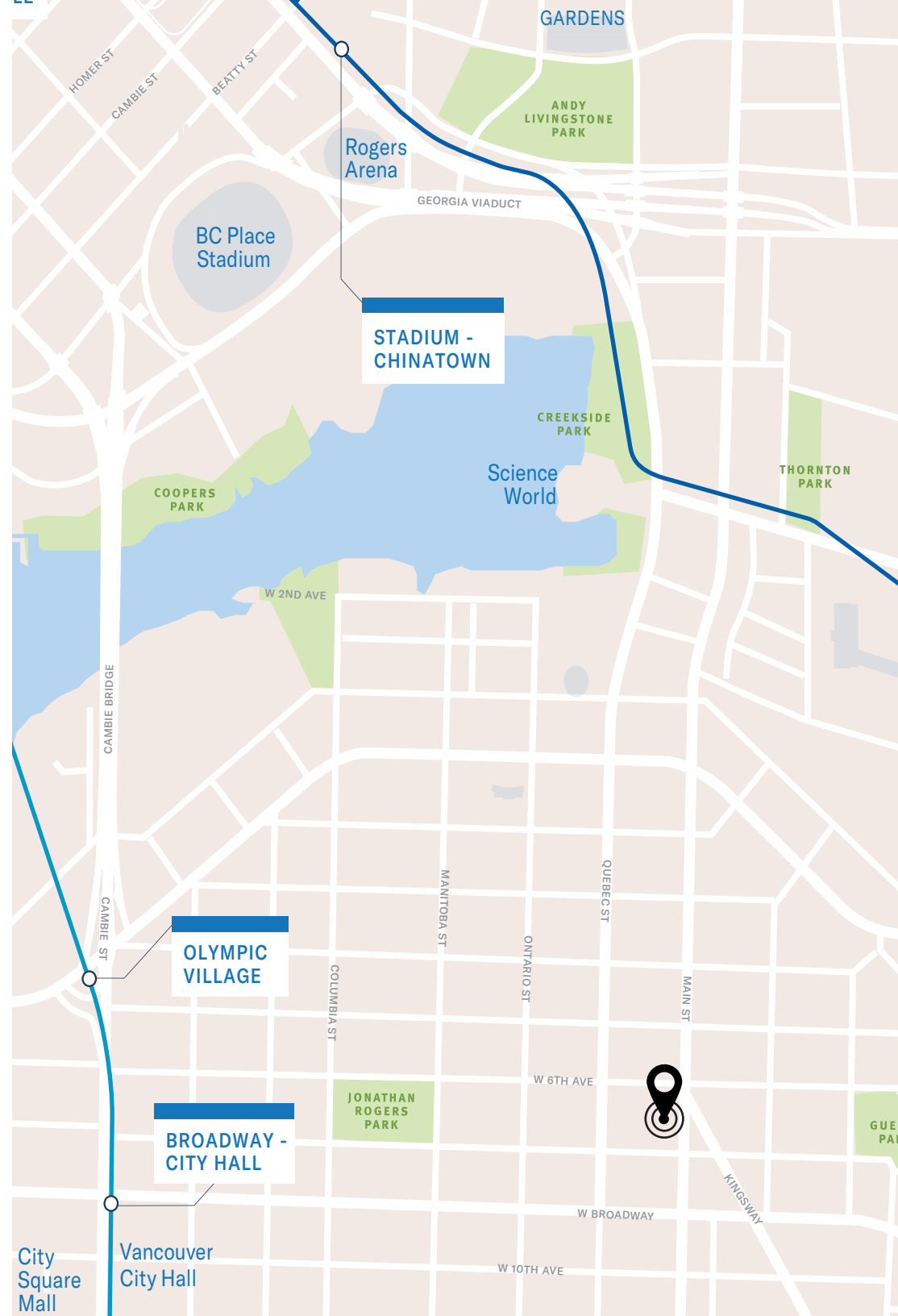
Bike

88

### WITHIN A 10 MINUTE RADIUS

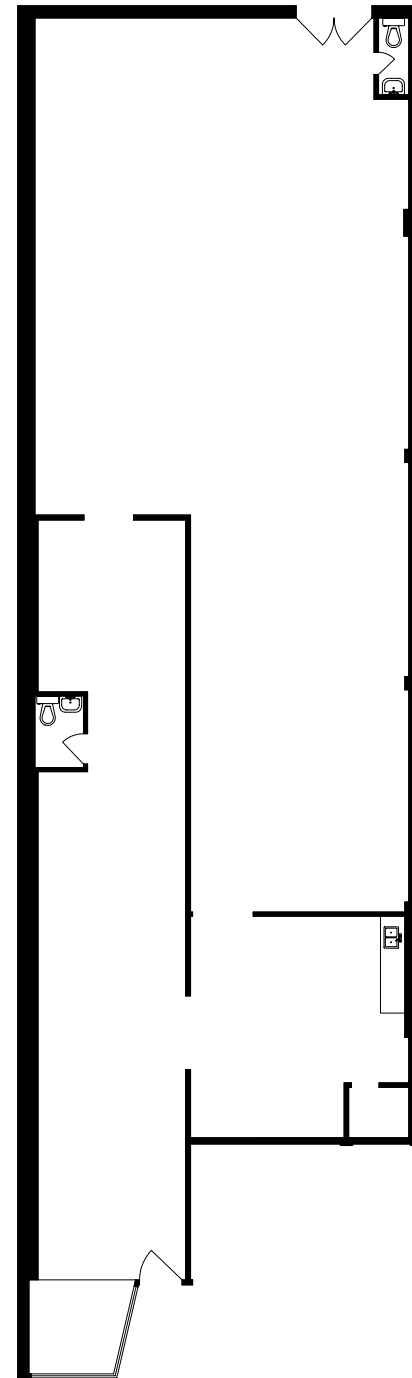
- + Bus Stops
- + Restaurants
- + Community Centre
- + Cafes
- + Mount Pleasant Skytrain Station
- + Breweries
- + Urban Parks

2343 Main Street **LEASING OPPORTUNITY**

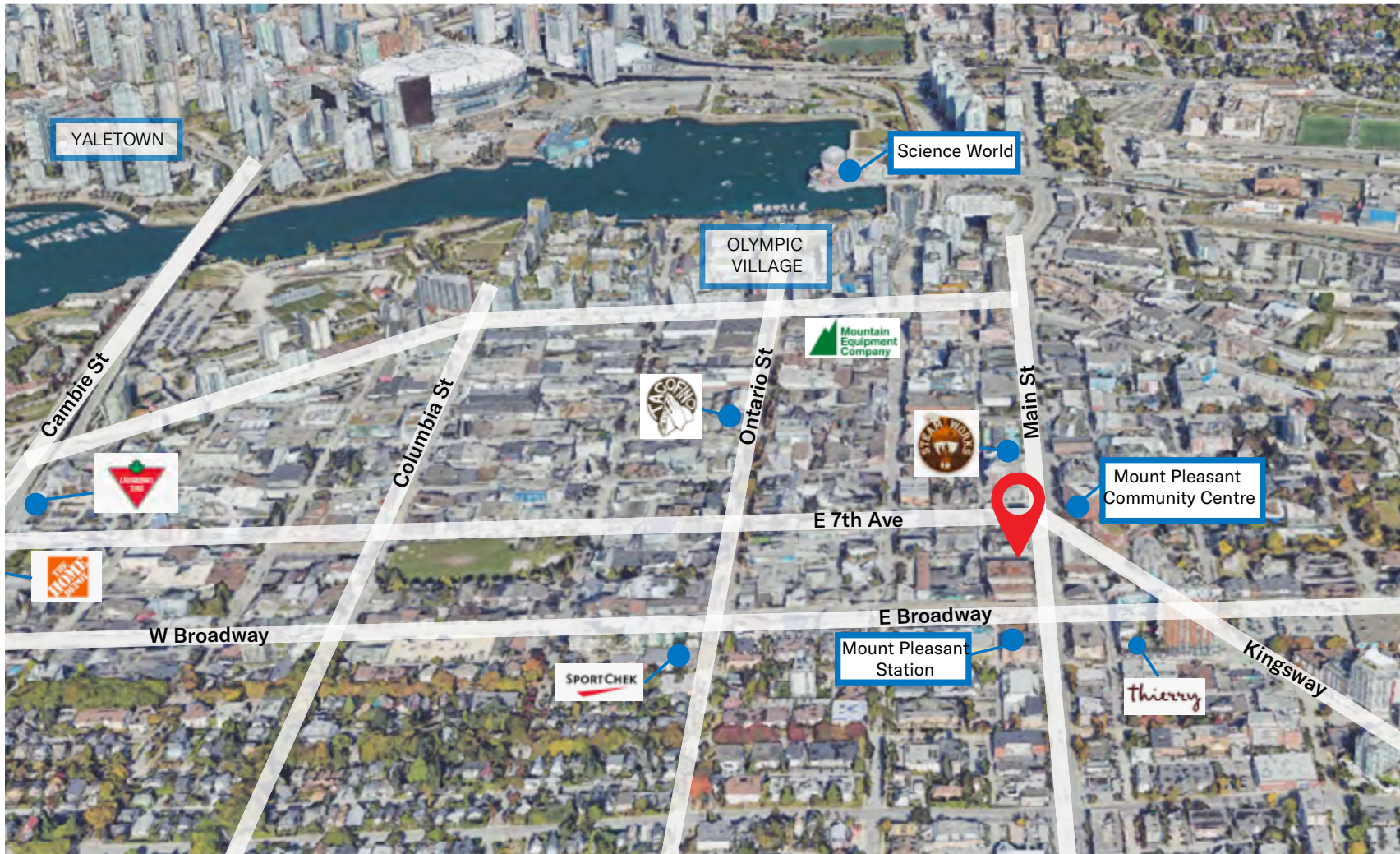


## SALIENT DETAILS

<b>Address</b>	2343 Main Street, Vancouver
<b>Rentable Area</b>	3,428 SF
<b>Lease Type</b>	NNN
<b>Base Rent</b>	Contact us
<b>Additional Rent</b>	\$14.57 PSF (2026 estimate)
<b>Available Date</b>	Contact us



# LOCATION SITE MAP



# About Peterson

From one building on Vancouver’s Alberni Street to a range of influential projects across North America, we’ve expanded into diverse areas of expertise across the real estate industry. We believe our growth is made possible by practicing our values – putting relationships first and standing by our word. As we continue to strive for Something Greater, our entrepreneurial spirit powers an active set of guiding principles designed to give each business pillar a profound sense of purpose.

Powered by our business acumen and our big picture outlook, we’re meeting the demand of local and global businesses alike. As workplaces evolve, we strive to create spaces where businesses can thrive, connect, and grow in today’s new marketplace. Our strong portfolio of prime urban locations across North America positions Peterson as a reliable partner when developing commercial office strategies.



FAIRMONT MEDICAL BUILDING



FAIRMONT PACIFIC RIM, VANCOUVER



SHANGRI-LA, VANCOUVER

# Peterson's Commitment to ESG

Environmental, Social and Governance (ESG) provides Peterson with the opportunity to focus on addressing the environmental impacts from our business operations, delivering social benefits to the communities where we work and ensuring good governance to strengthen the trust of our stakeholders.

Peterson has implemented an ESG Framework + Policy that is forward-thinking, comprehensive and a natural extension of our founding Values. We will use our ESG Framework + Policy to build momentum towards our ESG initiatives, and incorporate ESG throughout our business in order to improve operations and to lead by example for other community leaders seeking to do better.

