

FOR LEASE AT THE  
UNIVERSITY OF BRITISH COLUMBIA



# 2601 EAST MALL

VANCOUVER, BC

Full building mid-century modern **office** opportunity

## ALAIN RIVÈRE

Personal Real Estate Corporation  
Vice President  
CBRE Limited, The HTFG  
alain.rivere@cbre.com | +1 604 662 5110



THE HIGH  
TECHNOLOGY  
FACILITIES GROUP

**CBRE**



# BUILDING DETAILS

## OFFICE SPACE



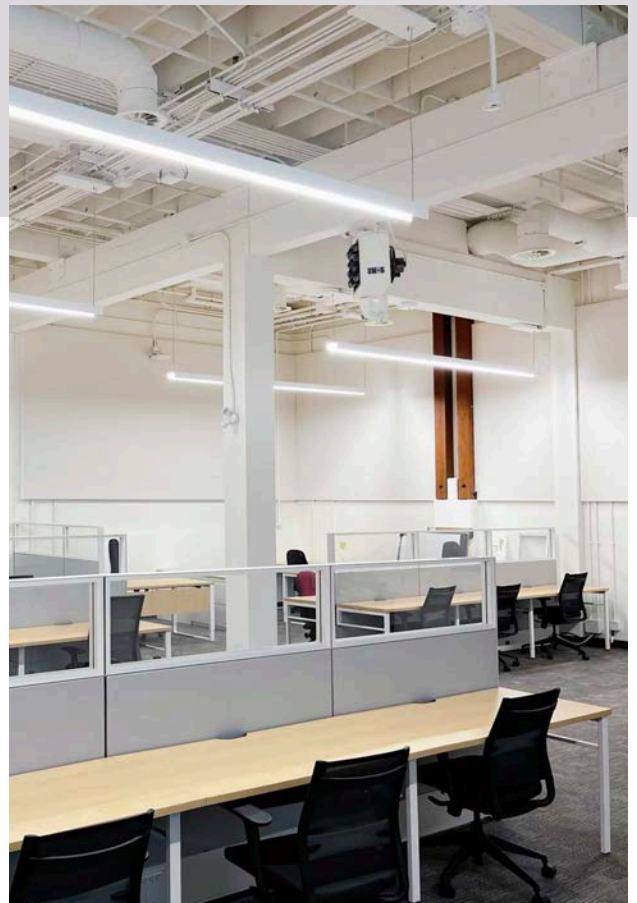
**USE** Office

**PREMISES** Entire Building

**AREA** 20,879 SF  
Over 3 floors (Partial split floors)

**GROSS RENT** \$42.00 PSF  
(Utilities and Janitorial services additional)

**AVAILABILITY** Move-in ready with furniture available



# BUILDING FEATURES

## OFFICE SPACE



Full building with branding opportunity.



Mid-century modern design with beautiful exposed beams and wood features.



Large windows allowing an abundant of natural light.



Large kitchen and lounge area, with private patio surrounded by nature.



New washrooms and showers on lower level.



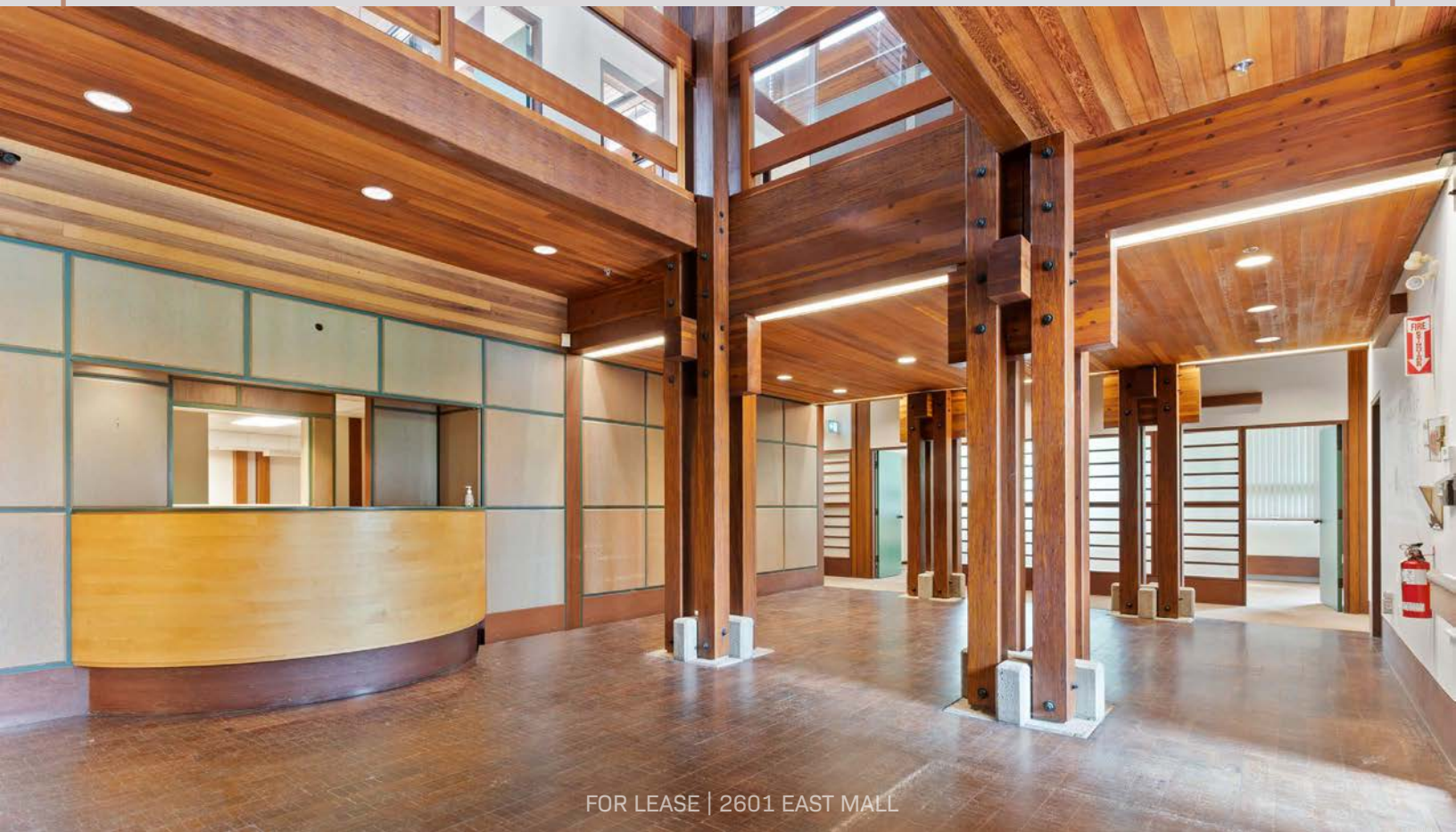
Multiple offices, meeting rooms, boardroom, open workspace, and storage areas.



Direct exterior loading access plus large parking lot available free of charge.



Ready for immediate occupancy, or renovation, as required.

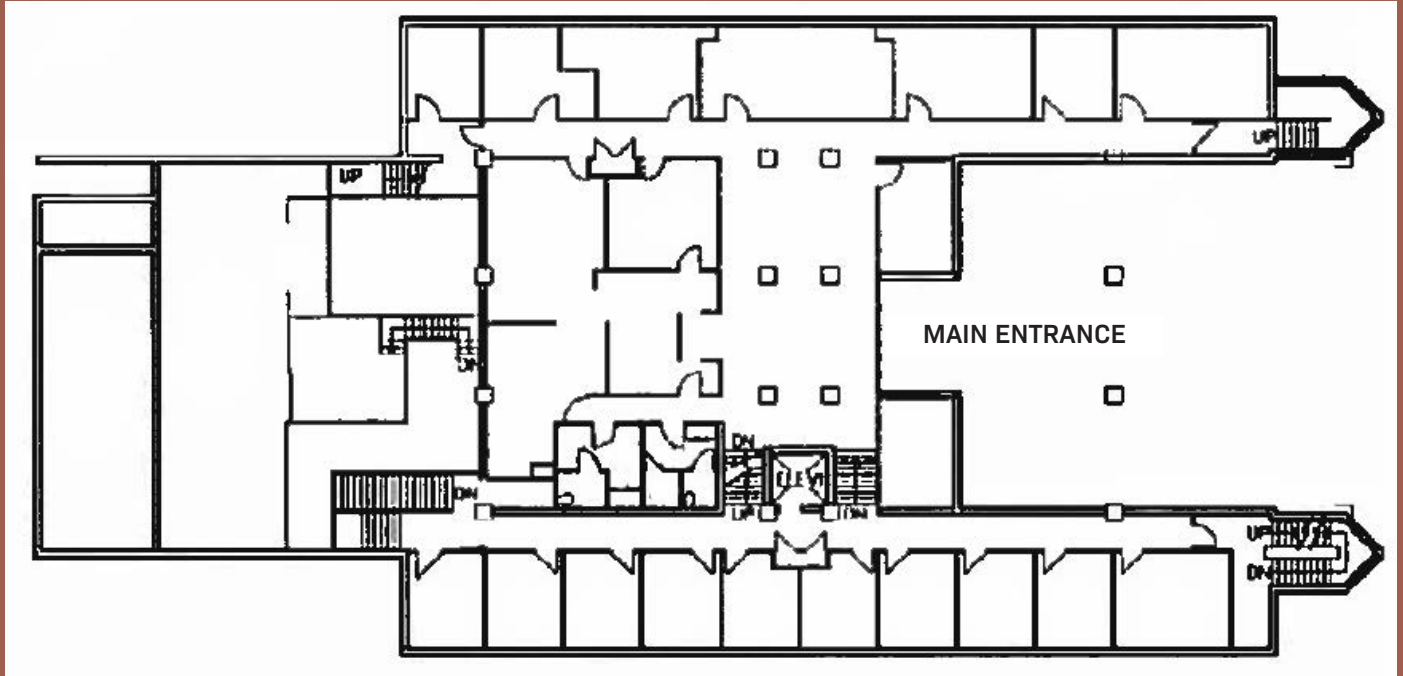




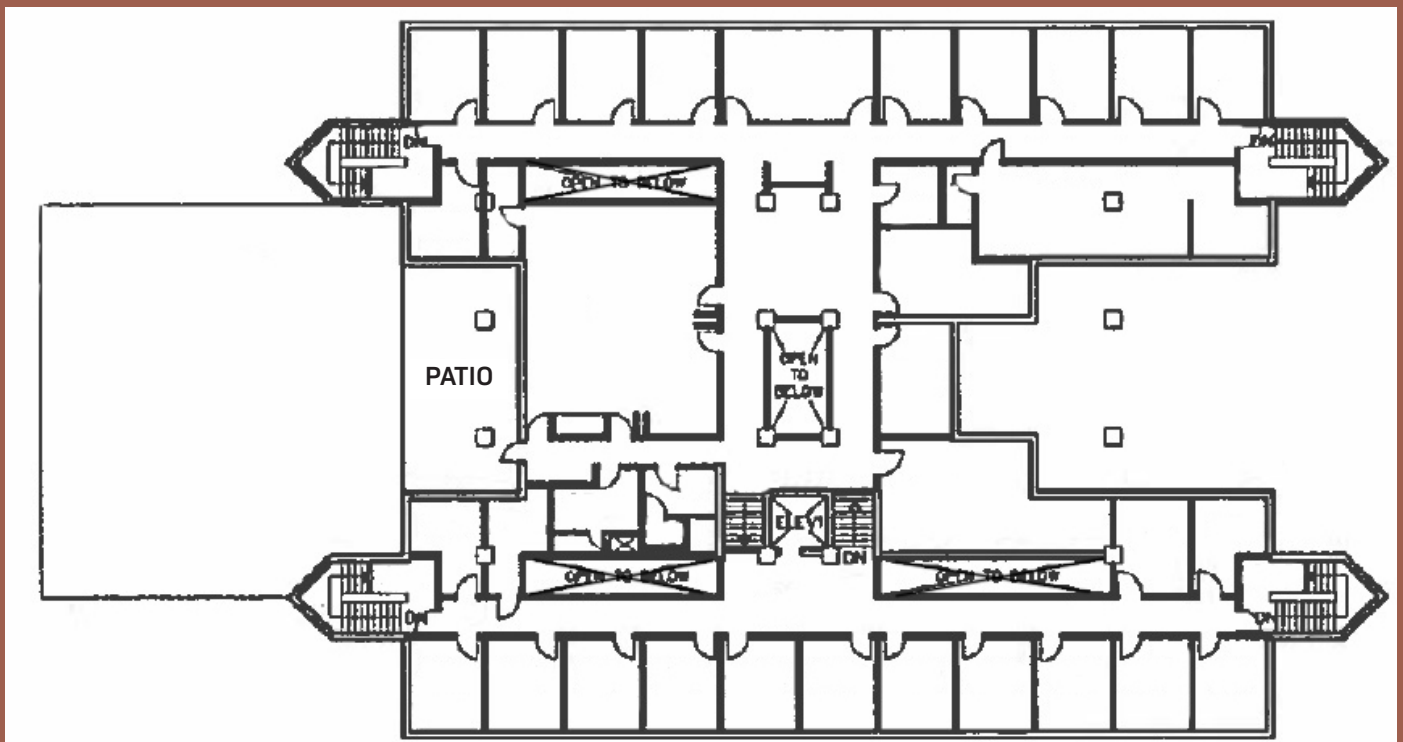
# FLOOR PLANS\*

OFFICE SPACE

## MAIN LEVEL



## SECOND LEVEL

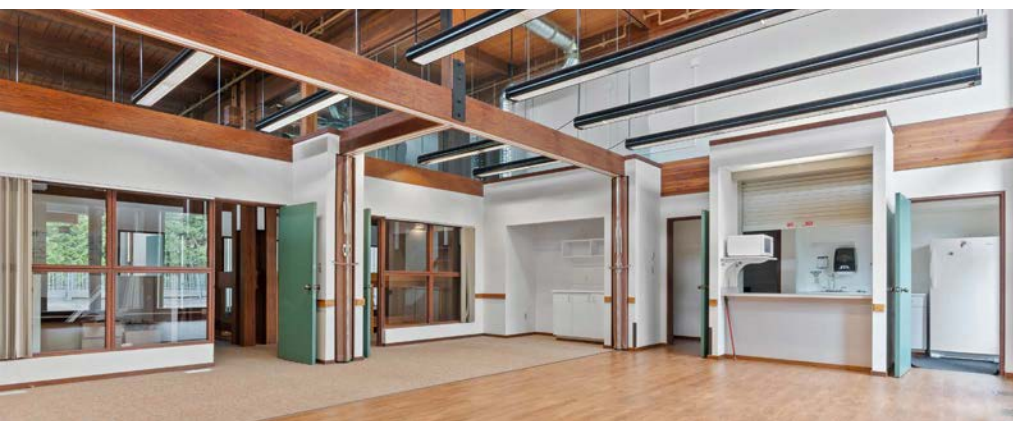
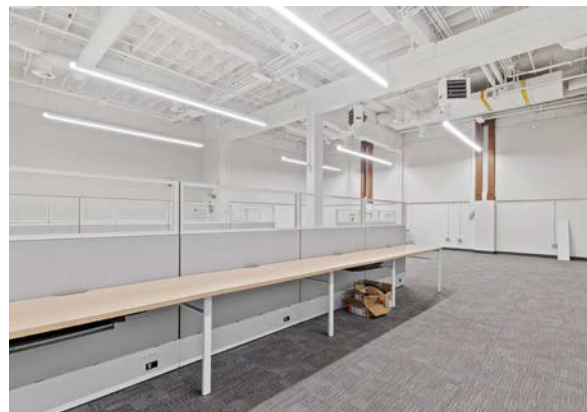
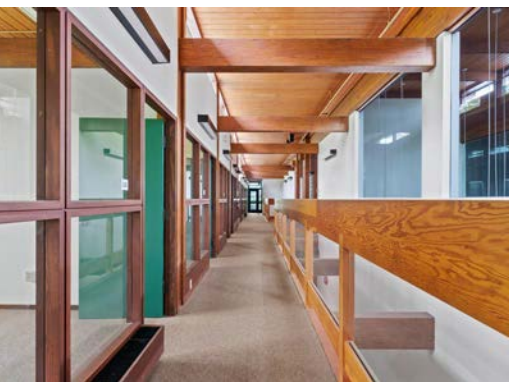
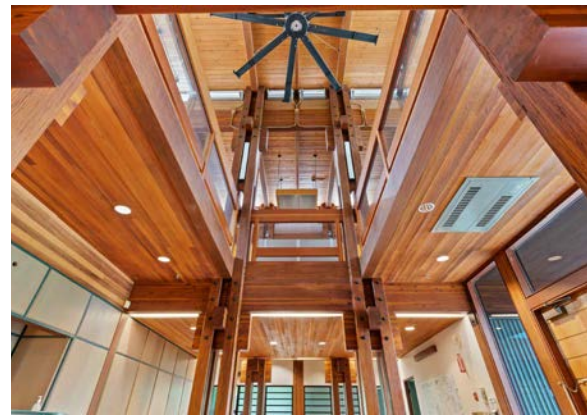


\*Plans are approximate and not to scale, partial lower level and partial third level not shown.



# 2601 EAST MALL

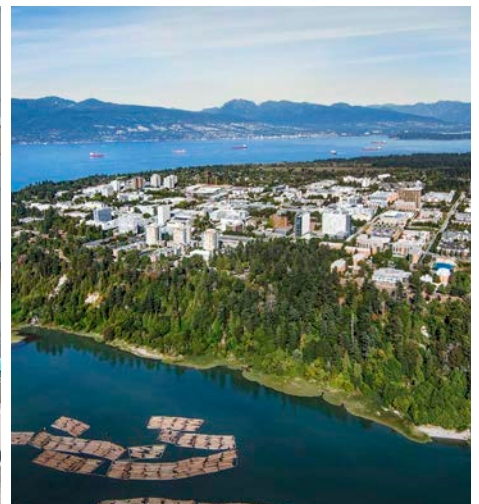
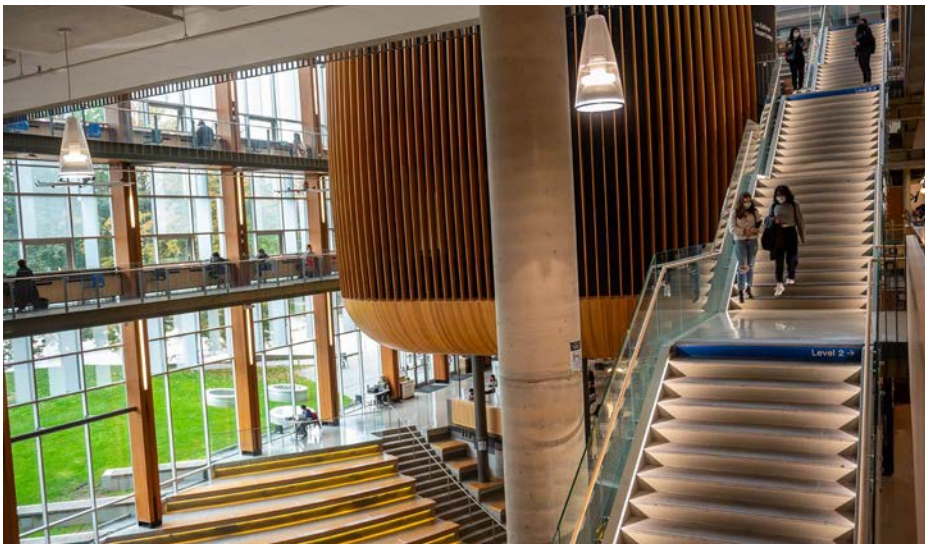
## GALLERY





# THE LOCATION

2601 & 2665 East Mall is located on the incomparable University of British Columbia (UBC) Point Grey campus. This acclaimed university environment is a complete, progressive community, with a full complement of food, retail, and services. It boasts some of the region's finest cultural venues, and amenity options including the colourful UBC Botanical Gardens, lush rainforest trails, iconic West Coast beaches, and a full range of varsity-calibre athletic facilities – all within walking distance.





# THE NEIGHBOURHOOD



## ATTRACTIONS

- 01 Museum of Anthropology
- 02 Chan Centre for the Performing Arts
- 03 UBC Botanical Garden
- 04 Beaty Biodiversity Museum
- 05 Morris and Helen Belkin Art Gallery
- 06 Frederic Wood Theatre
- 07 AHVA Gallery
- 08 Pacific Museum of Earth
- 09 Nitobe Memorial Garden
- 10 UBC Rose Garden

## AMENITIES

- 11 Wesbrook Community Centre
- 12 Old Barn Community Centre
- 13 MacInnes Field
- 14 War Memorial Gymnasium
- 15 UBC Aquatic Centre
- 16 Doug Mitchell Thunderbird Sports Centre
- 17 Thunderbird Park
- 18 UBC Tennis Centre

## RESTAURANTS

- 19 Jamjar Canteen
- 20 JJ Bean Coffee Roasters
- 21 Body Energy Club
- 22 BierCraft Restaurant
- 23 Neptune Chinese Kitchen
- 24 Great Dane Coffee
- 25 Bean Around the World Coffee House & Bistro
- 26 Virtuous Pie
- 27 Tacomio
- 28 Uncle Fatih's Pizza

## SERVICES

- 29 Save-On-Foods
- 30 House of Vision Optical
- 31 Scotiabank
- 32 Shoppers Drug Mart
- 33 Focal Dental
- 34 Telus/Koodo
- 35 Mozart School of Music Vancouver
- 36 Copy Smart
- 37 Royal Bank
- 38 Wesbrook Properties
- 39 BC Liquor Store
- 40 Insure BC
- 41 Wesbrook Village Dental Clinic
- 42 Live at UBC Welcome Centre
- 43 More Bikes

## NATURE

- 44 Wreck Beach
- 45 Pacific Spirit Regional Park



# FOR MORE INFORMATION & TOUR REQUEST CONTACT

## ALAIN RIVÈRE

Personal Real Estate Corporation  
Vice President  
CBRE Limited, The HTFG  
alain.riviere@cbre.com | +1 604 662 5110



FOR LEASE | 2601 EAST MALL



THE HIGH  
TECHNOLOGY  
FACILITIES GROUP

**CBRE**