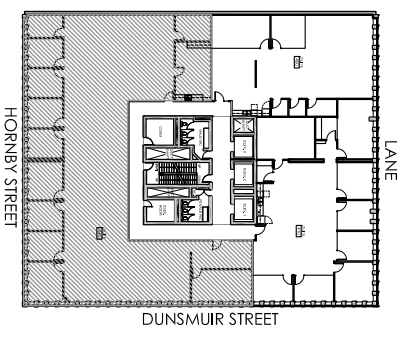
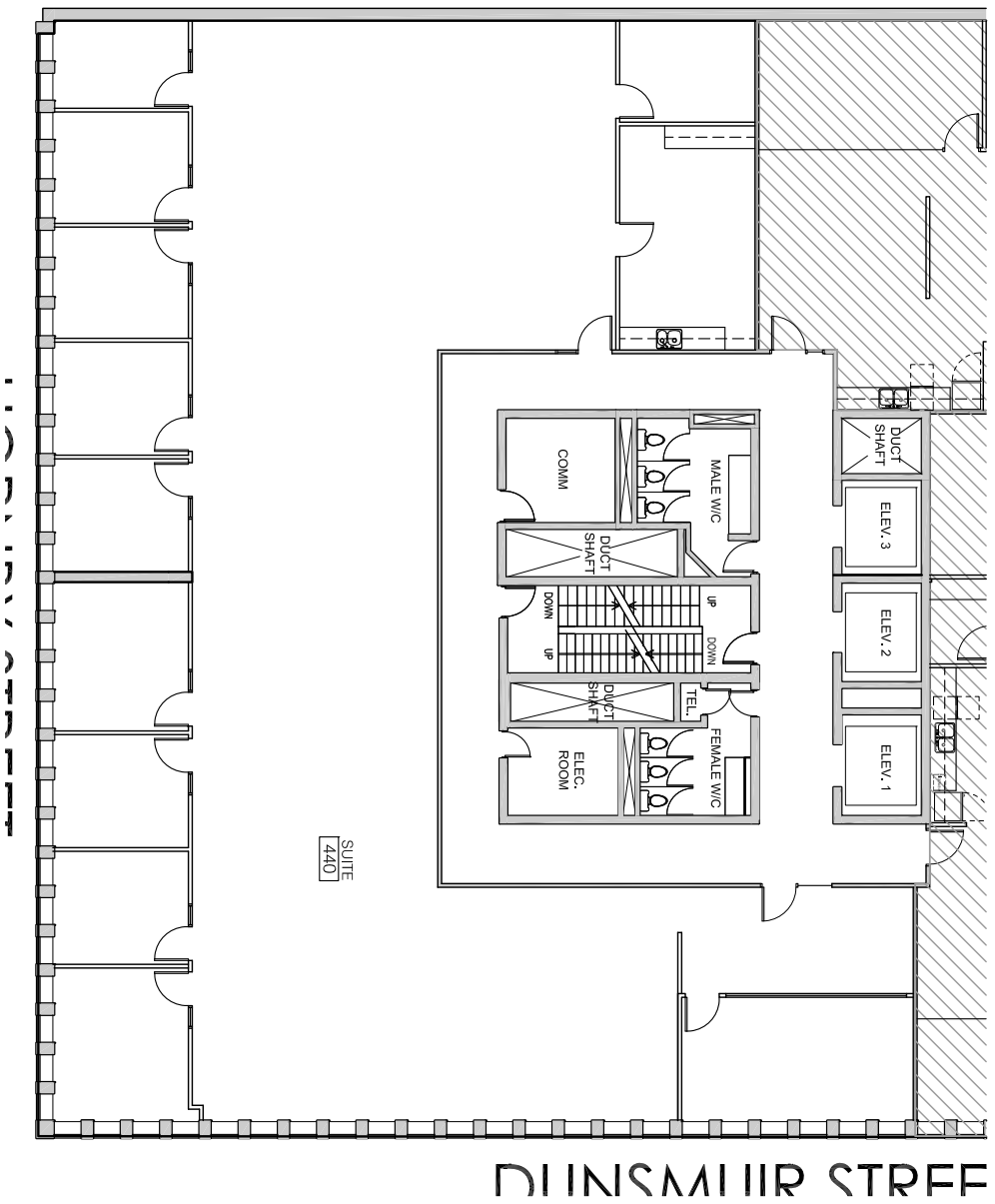


SUITE 440
APPROX. 6,491
RENTABLE SQ. FT.



SITE PLAN
SCALE: NOT TO SCALE

885
DUNSMUIR ST.
SUITE 440
885 DUNSMUIR STREET
VANCOUVER, BC

RENTABLE AREA: 6,491 SQ.FT.
SUBJECT TO LANDLORD VERIFICATION
May 2020
SCALE: NOT TO SCALE

EXISTING FLOOR PLAN

MANAGED BY:
WEST PENDER
PROPERTY GROUP
230 - 830 West Pender Street
Vancouver, BC