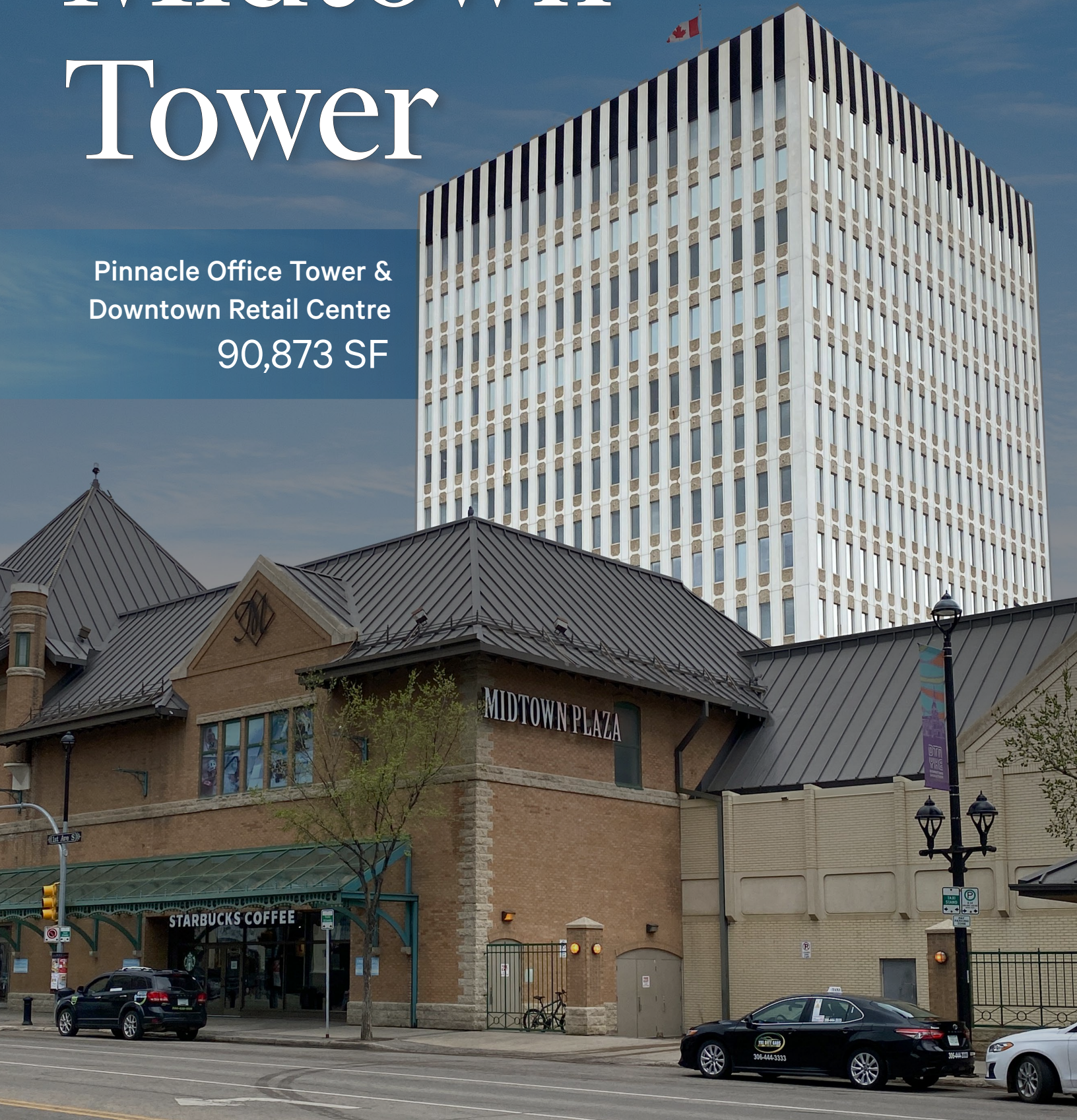


Midtown Tower

Pinnacle Office Tower &
Downtown Retail Centre
90,873 SF



Midtown Tower Downtown Office Suites

Medical Office Space Above Iconic Downtown Shopping Mall

Midtown Tower, positioned above Saskatchewan's premier shopping destination, Midtown Plaza, is ideally located in the heart of the downtown office market. Midtown Plaza features over 130 retail outlets, focusing on fashion and lifestyle brands, along with a beautifully renovated food court and ample underground parking. Tenants of Midtown Tower benefit from easy access to these amenities for shopping after work, quick lunches with colleagues, or leisurely strolls through the mall.

The central location of Midtown Plaza offers unmatched views of the South Saskatchewan River and Saskatoon's vibrant downtown core. The 5th floor offers a predominantly open-concept workspace, accommodating numerous workstations and maximizing natural light, while private offices and meeting rooms are thoughtfully integrated into the layout. The 6th floor is ready for tenants to customize and includes a section of recently renovated office space that requires no additional work.



\$19.50

PROPOSED NET RENT PSF

\$17.57

EST. ADDITIONAL RENT PSF (2025)

Features & Amenities



RECEPTION
AREA



KITCHENETTE/
BREAK ROOM AREA



MEETING &
CALL ROOMS



PRIVATE
ROOMS/OFFICES



OPEN-CONCEPT
WORK AREAS



MULTIPURPOSE/
SUPPLY ROOMS



UNDERGROUND
PARKADE



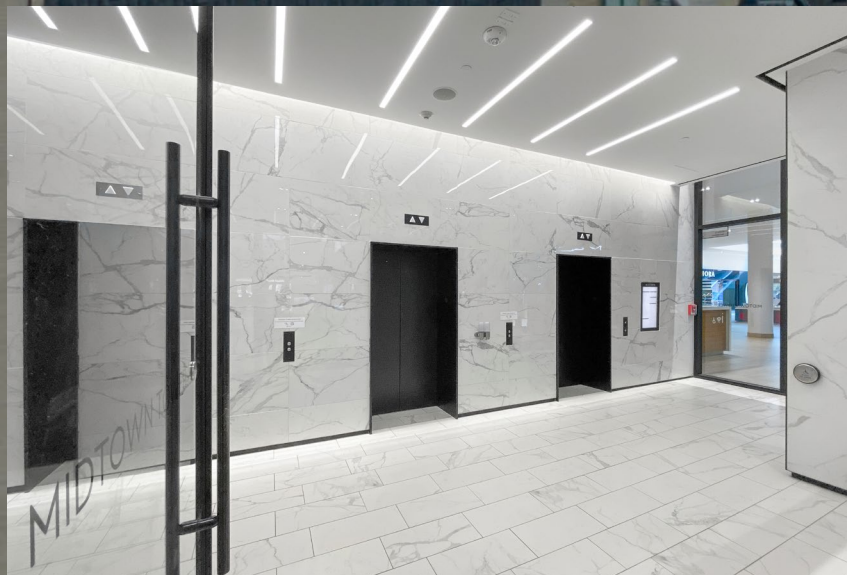
BRAND-NEW
ELEVATOR LOBBY



ACCESS TO MALL RETAIL
& FOOD COURT

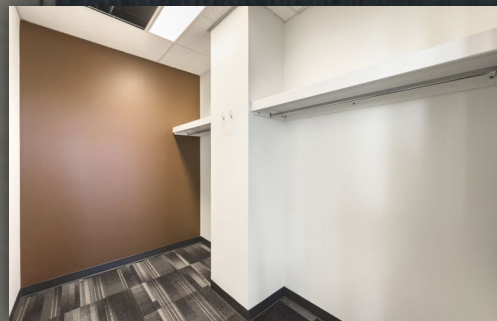
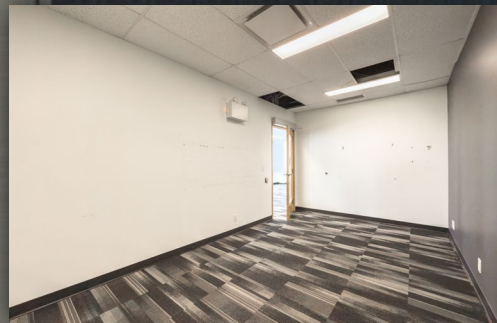
Current Availability

26,693 SF

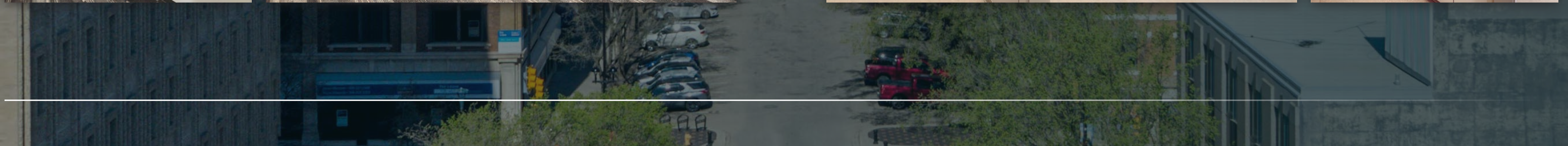


Additional Photos

Unit 500



Unit 601C



Midtown Tower

201 1ST Avenue South | Saskatoon, SK S7K 1J9

Contact Us

Michael Bratvold

Senior Vice President
+1 306 803 5977
Michael.Bratvold@cbre.com

Ben Kelley

Vice President
+1 306 803 5979
Ben.Kelley@cbre.com

Dallon Kuprowski

Senior Financial Analyst
+1 306 803 5983
Dallon.Kuprowski@cbre.com

Shane Endicott

Senior Associate
+1 306 803 5978
Shane.Endicott@cbre.com

Luke Jansen

Sales Associate
+1 306 803 5981
Luke.Jansen@cbre.com

CBRE Saskatchewan

cbre.ca/saskatchewan