

FOR SUBLEASE

SOUTHLAND PARK II

10333 SOUTHPORT ROAD SW



AVISON
YOUNG

© 2025 Avison Young Commercial Real Estate Services LP. All rights reserved. E. & O.E. The information contained herein was obtained from sources which we deem reliable and, while thought to be correct, is not guaranteed by Avison Young.



Property Highlights

- Move-in Ready
- Furntiure Avaialble
- Dedicated visitor parking
- Minutes from to Southland LRT Station
- Amenities include a conference center, fitness facility, and food services
- Quick access to Macleod Trail

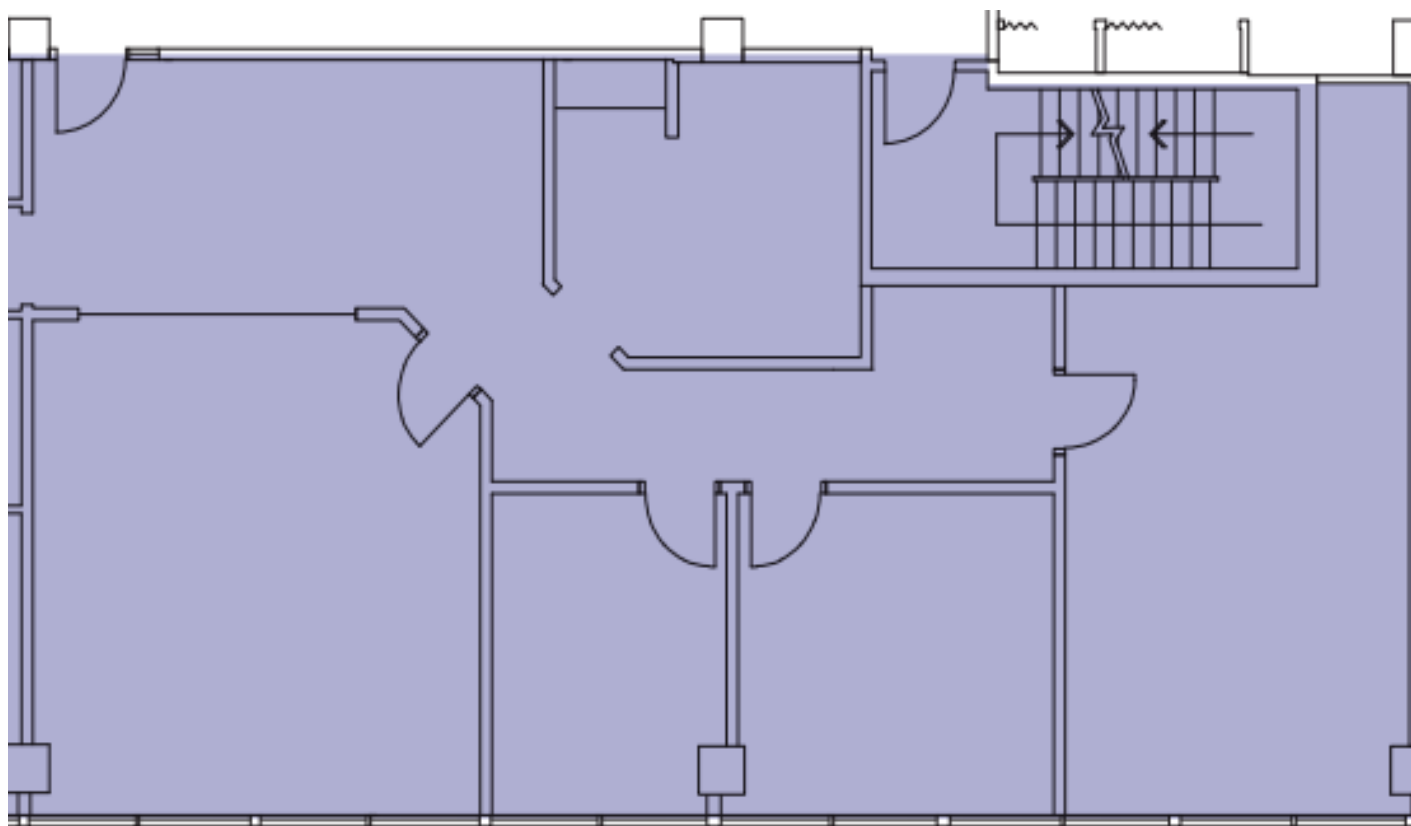
Lease Particulars

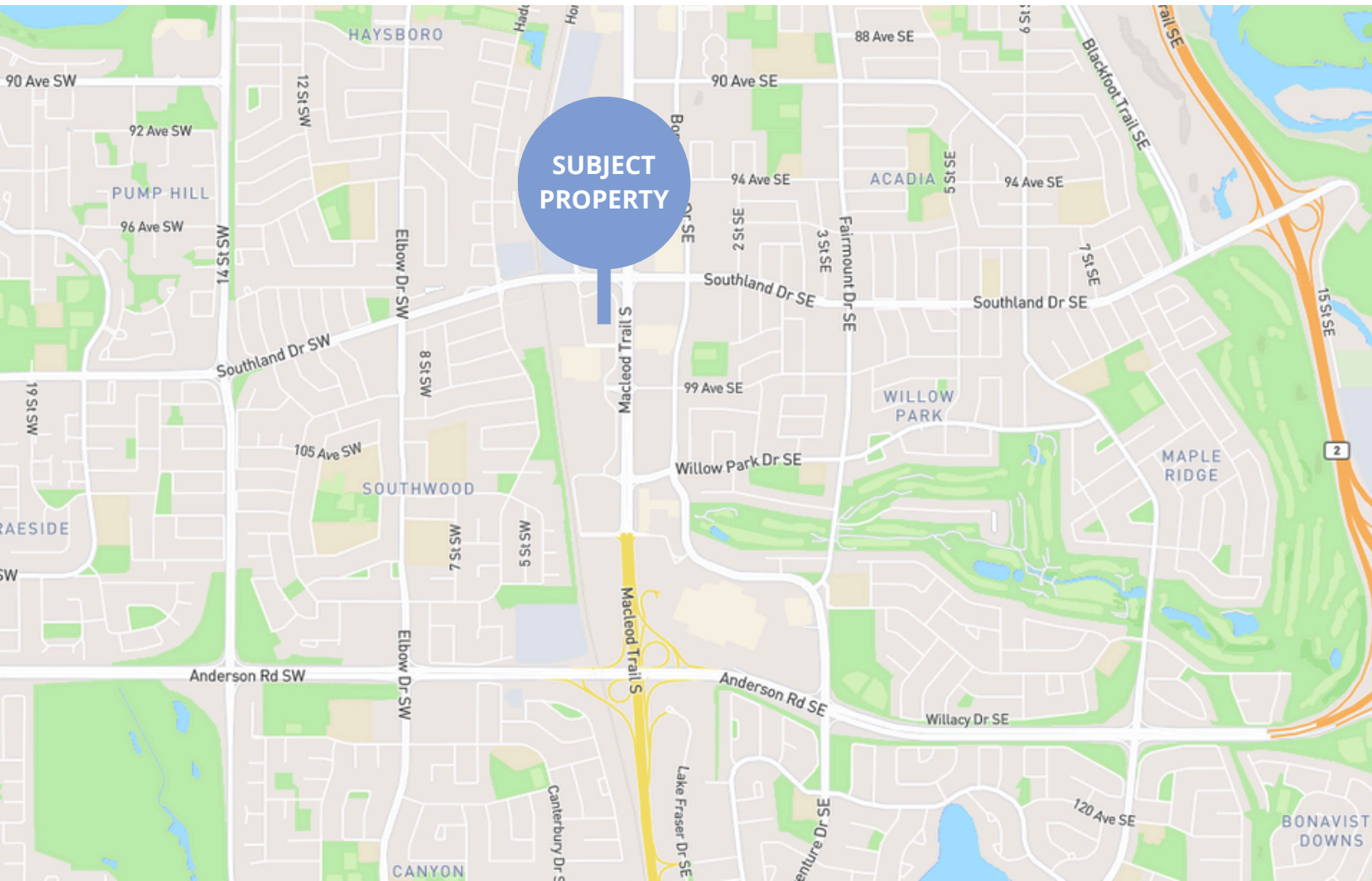
Suite 509	1,705 sf
Op. Costs	\$16.44 (est. 2025)
Expiry	July 31, 2026
Parking	2 reserved stalls (underground)
Parking Costs	\$125/stall/month (underground)

Suite 509

1,705 sf

Reception
Kitchen
3 Offices
Boardroom





Alexi Olcheski Executive Vice President
403 232 4332 | alexi.olcheski@avisonyoung.com

Sean Clark Associate Vice President
403 232 4384 sean.clark@avisonyoung.com

Estelle Tran Associate
403 571 4253 estelle.tran@avisonyoung.com

**AVISON
YOUNG**